








Rural Municipality of Thompson

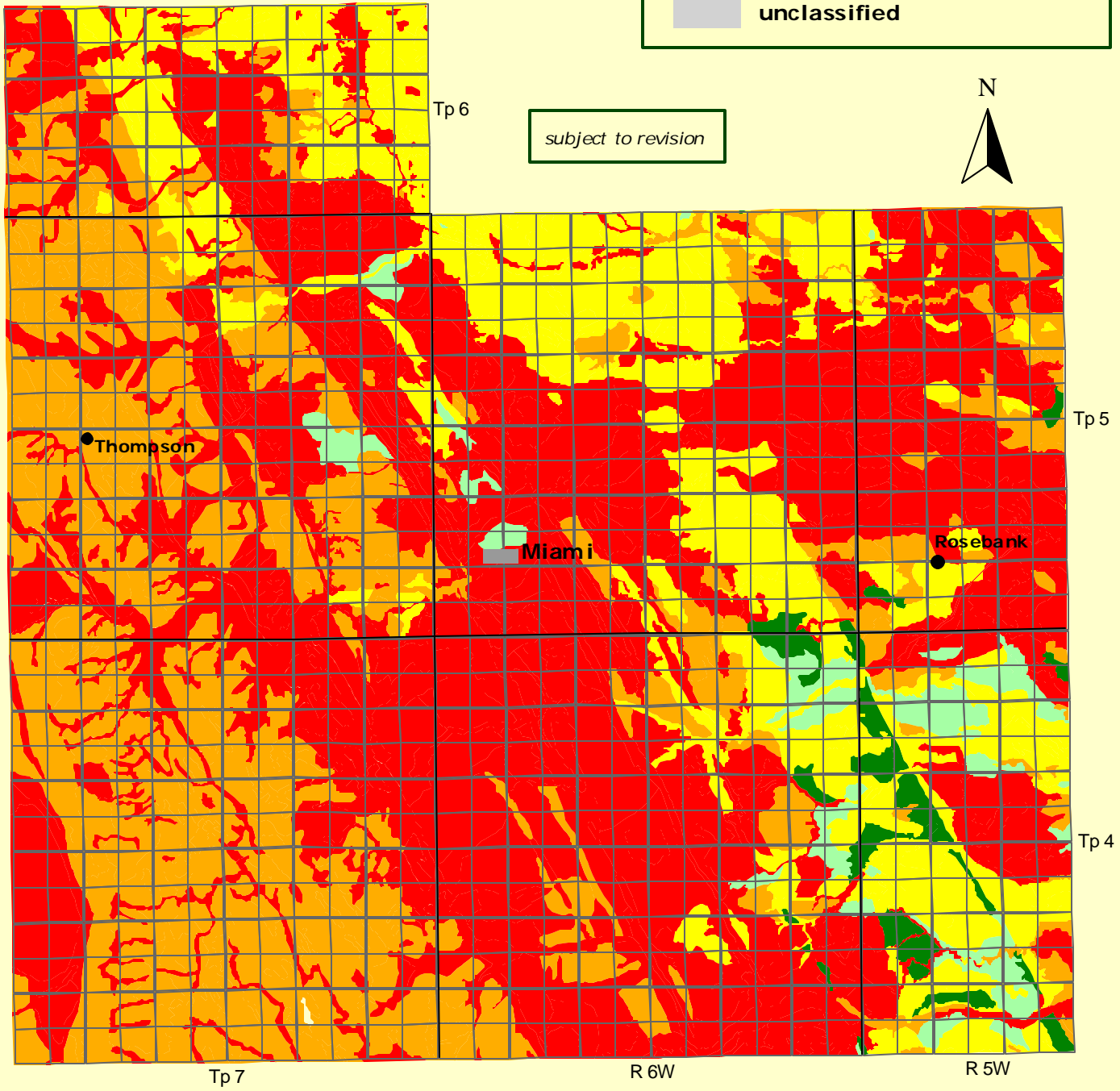
Soil Suitability for Irrigated Potato Production



Agricultural Resources Section
Soils and Crops Branch
Manitoba Agriculture and Food

Universal Transverse Mercator (NAD27) Projection
Derived from Detail Soil Information (1:20 000)

	Area (ha)	% of RM
 Class 1	825	1.6
 Class 2	1376	2.6
 Class 3	9693	18.4
 Class 4	14495	27.5
 Class 5	26332	49.9
 water		
 unclassified		



subject to revision