
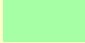








Soil Suitability Classes for Irrigated Potato Production

	Area (ha)	% of RM
 Class 1	1606	1.7
 Class 2	7380	7.6
 Class 3	5364	5.5
 Class 4	57374	59.0
 Class 5	25120	25.8
 water		
 unclassified		

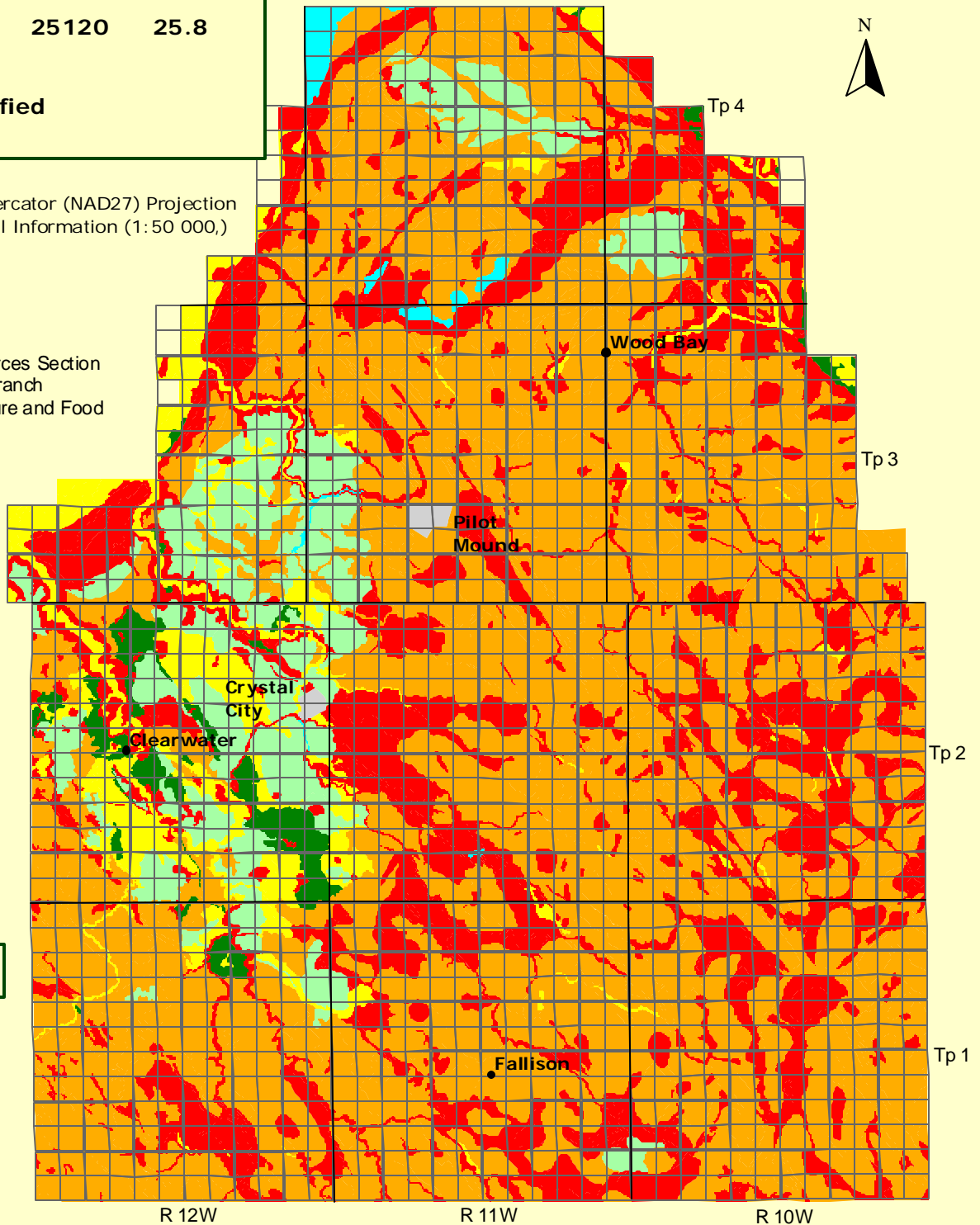
Rural Municipality of Louise Soil Suitability for Irrigated Potato Production

5 0 5 10 Kilometers




Universal Transverse Mercator (NAD27) Projection
Derived from Detail Soil Information (1:50 000,)

Agriculture Resources Section
Soils and Crops Branch
Manitoba Agriculture and Food



subject to revision