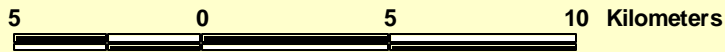
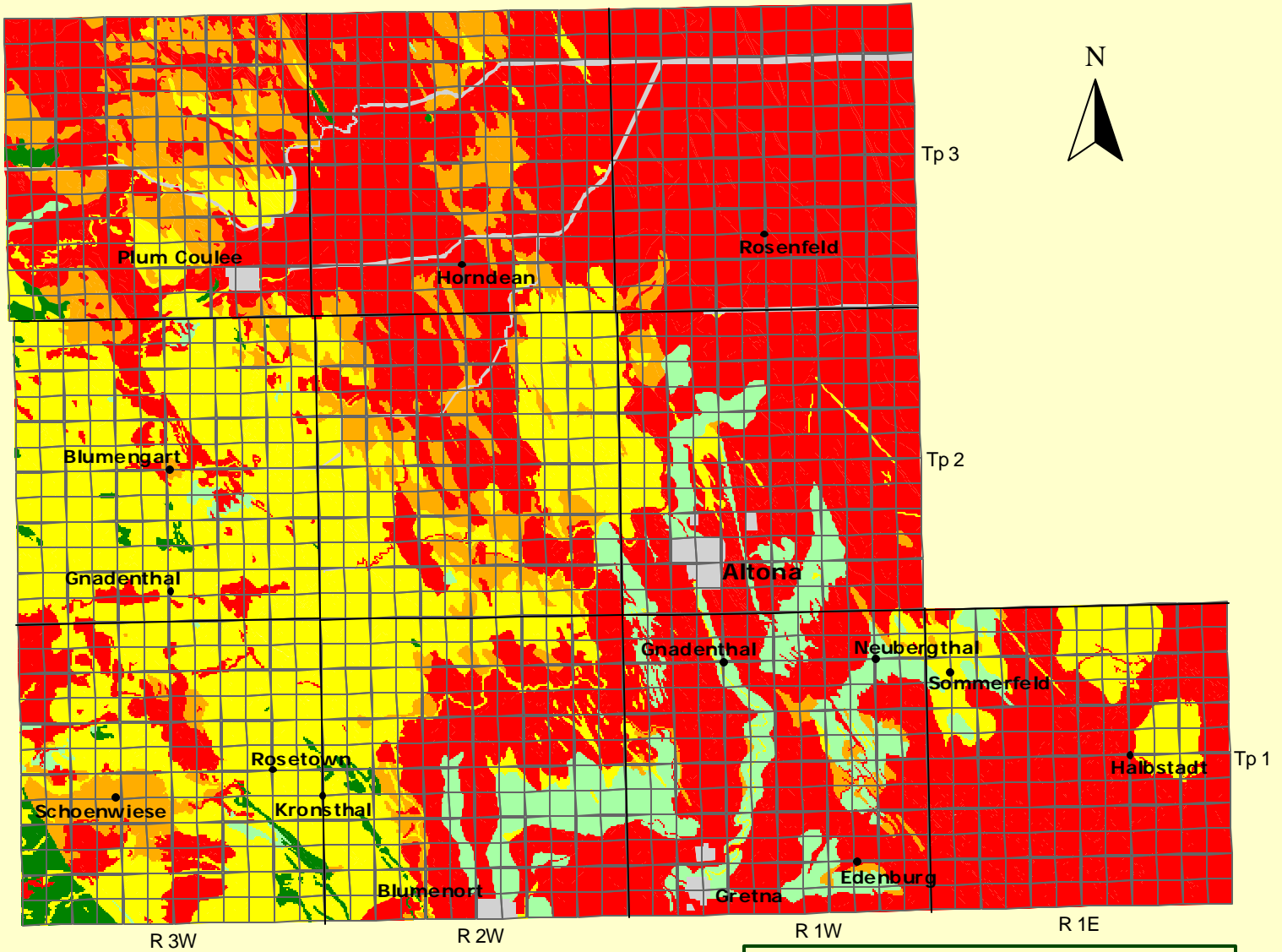


Rural Municipality of Rhineland


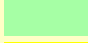





Soil Suitability for Irrigated Potato Production



Universal Transverse Mercator (NAD27) Projection
Derived from Detail Soil Information (1:20 000)

Agricultural Resources Section
Soils and Crops Branch
Manitoba Agriculture and Food

subject to revision

Soil Suitability Classes for Irrigated Potato Production			
		Area (ha)	% of RM
	Class 1	1299	1.3
	Class 2	5669	5.9
	Class 3	25903	26.7
	Class 4	9025	9.3
	Class 5	53609	55.3
	water		
	unclassified		