

October 20, 2015

File: 2011-4941.0200

Siobhan Burland Ross, M.Eng., P.Eng.
Manager, Municipal Industrial and Hazardous Waste Section
Manitoba Conservation & Water Stewardship
123 Main St Suite 160
Winnipeg MB R3C 1A5

**Re: NOTICE OF MINOR ALTERATION REQUEST FOR
THE ST. CLAUDE WASTEWATER TREATMENT LAGOON LOCATED AT NE ¼ 15-08-07 WPM
FOR MINOR REPAIRS AND MAINTENANCE**

Dear Ms. Burland Ross:

In accordance with the Environment Act (Section 14), this submission is a request for minor alterations to said facility operating under Licence Number 1666 S3 for the Village of St. Claude. This NOA is in response to the recommendation by Mr. Jay Rackham on September 1, 2015.

The proposed work generally consists of the installation of a new intercell pipe and valve between Primary Cell 1 and Primary Cell 2. The existing pipe is plugged and allows minimal flow between the cells. As a result, the RM must pump over the berm to prevent overflowing the Primary Cell #1. The RM has made attempts to locate the intercell pipe in hopes to jet it clean; but have been unsuccessful in locating the pipe due to the depth it is installed at. Thus a new intercell pipe is proposed to regain flow between the cells.

The existing intercell pipe and valve will remain in place. A new 150mm schedule 10 stainless steel pipe with isolation valve is proposed. The new intercell pipe is to be placed a few meters north of the existing intercell pipe, but at a higher elevation to prevent sludge blockage. It is proposed to place the new intercell pipe at 2.0m below operating level of the two cells (at approximately half operating depth).

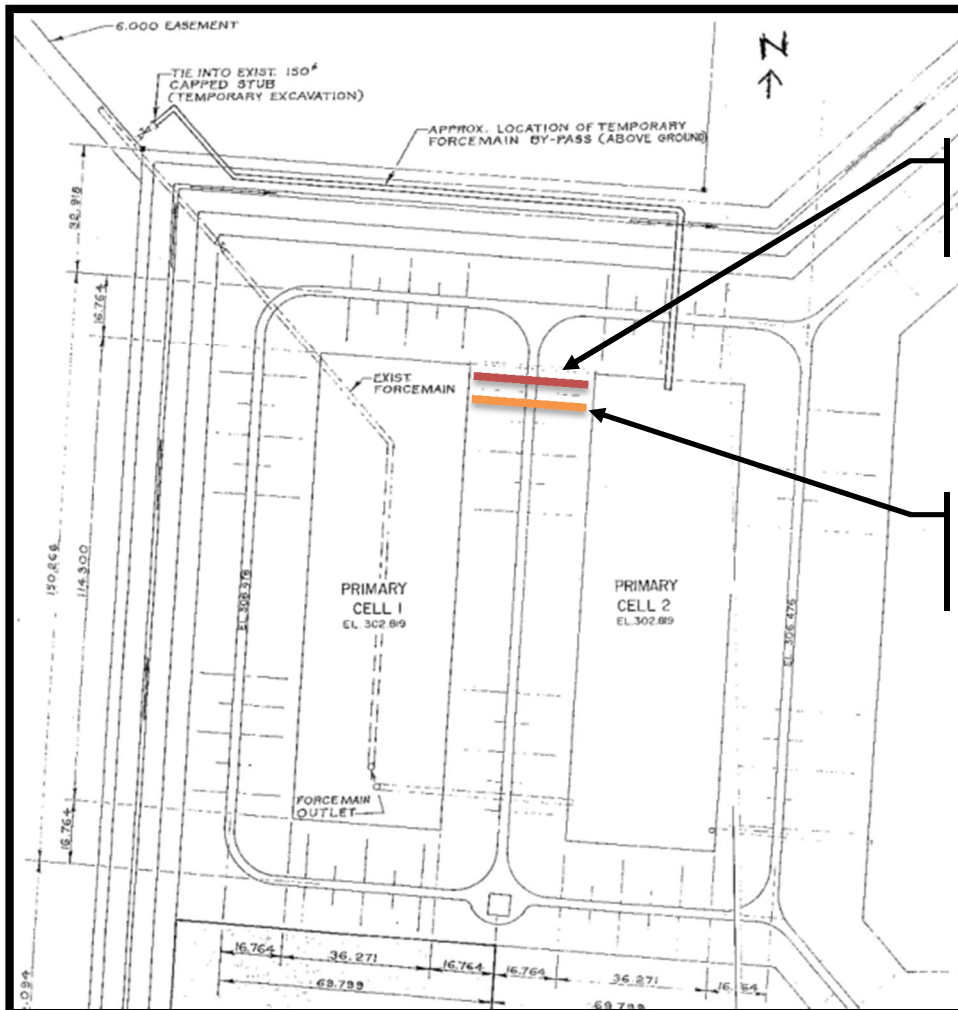
Pending approval, the RM proposes the following approach for the repairs:

1. The two primary cells liquid levels will be lowered to allow the work with minimal cofferdam requirements.
2. The new pipe will be placed along with a new isolation valve. The valve will be located at the edge of the top of berm.
3. The excavated material will be removed and placed in a location where any runoff will drain back into the lagoon cells.
4. No sludge will be removed from the facility for these works.

October 20, 2015
Siobhan Burland Ross, M.Eng., P.Eng.
Manitoba Conservation & Water Stewardship
- 2 -

5. The excavation will be backfilled with suitable soils and compacted in 300mm lifts to a density equivalent to the surrounding in situ material.
6. Any surplus material will be recycled if possible, or disposed of at a Licenced waste disposal ground.
7. The excavation along with any damaged areas from machinery will be restored to original conditions.
8. Once complete, the works will be recorded on the RM's record drawings.
9. The work is expected to take one day once the cells are lowered to the desired levels.
10. It is preferable that the work is completed this fall, and would commence with your approval.

St. Claude Wastewater Facility



Proposed new 150mm intercell pipe and valve.

Existing intercell pipe and valve. Plugged and providing minimal flow.



Associated
Engineering

GLOBAL PERSPECTIVE.
LOCAL FOCUS.

NOTICE OF ALTERATION REQUEST FOR
THE ST. CLAUDE WASTEWATER TREATMENT LAGOON LOCATED AT
NE ¼ 15-08-07 WPM FOR MINOR REPAIRS AND MAINTENANCE

October 20, 2015
Siobhan Burland Ross, M.Eng., P.Eng.
Manitoba Conservation & Water Stewardship
- 3 -

If there are any questions regarding this submission, please contact the undersigned.

Yours truly,

A handwritten signature in blue ink that reads "Ken Anderson".

Ken Anderson, P.Eng.
Manager, Water
Email: andersonk@ae.ca
Ph: (204) 942-6391

Ecl.

CC: Brenda Pulson
Utility Manager
R.M. of Grey
Box 99
Elm Creek, Manitoba R0G 0N0
1-204-436-2014