



Photograph 01. September 24, 2012: Fire Pond, looking north-west ↑



Photograph 02. September 24, 2012: Cattail Marsh in Southern End of Pit 1 ↑



Photograph 03. September 24, 2012: Hummocky Fen in the Northern Section of Pit 1 ↑



Photograph 04. September 24, 2012: Trees and Wet Meadow on East Boundary of Pit 1 ↑



Photograph 05. September 24, 2012: Pit 1, Looking South-East with Access Road to TDA in Center ↑



Photograph 06. September 24, 2012: Alder Understory with Grass and Sedge Ground Cover in Central Wet Fen Area near Pit 2 ↑



Photograph 07. September 24, 2012: Wet Fen and Upland Forest Edge near Pit 3 ↑



Photograph 08. September 24, 2012: Burn Deadfall near Pit 3 ↑



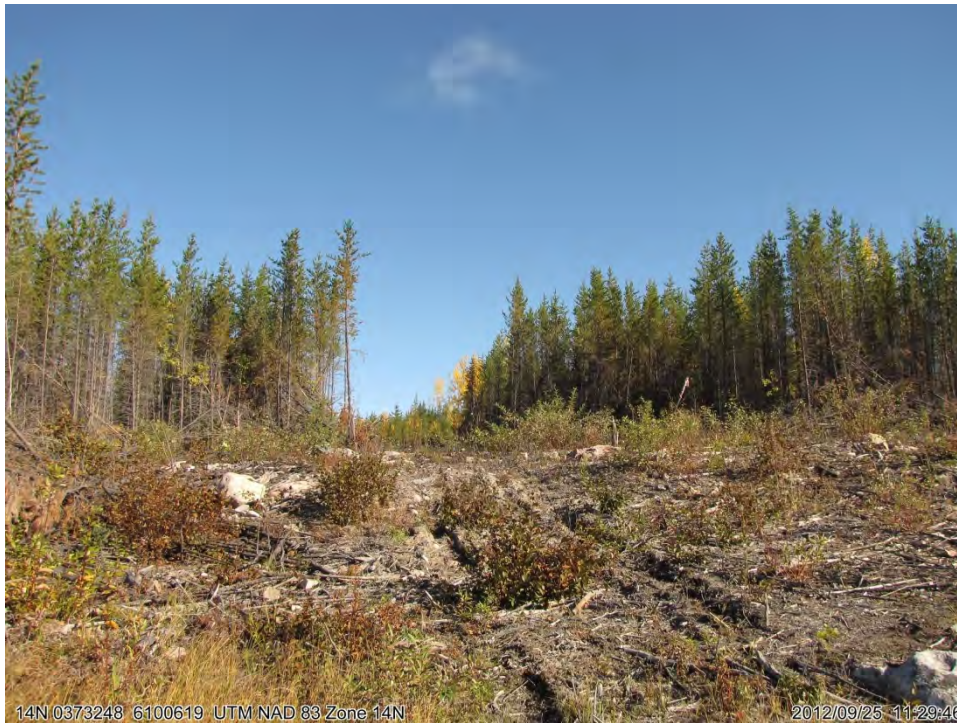
Photograph 09. September 25, 2012: Pit 4 with Fire Pond in Background, Looking South-East ↑



Photograph 10. September 25, 2012: General Bog Area at Pit 4 with Sedge Hummocks (foreground) and Sphagnum Mat (background) ↑



Photograph 11. September 25, 2012: Jack Pine Regeneration on Rocky Upland with Burned Deadfall near Pit 4↑



Photograph 12. September 25, 2012: Drill Road and Drilling Site Cleared in Local Upland Area near Pit 4↑



Photograph 13. September 25, 2012: Pit 5, Showing the Sphagnum Mat (foreground) and Wet Dense Sedge meadow (background) ↑



Photograph 14. September 25, 2012: PLM-01, Typical Ponded Crossing, Looking Northeast ↑



Photograph 15. September 25, 2012: PLM-02, Partially Buried ↑



Photograph 16. September 25, 2012: PLM-01, Beaver Dam, Looking South ↑



Photograph 17. September 25, 2012: PLM-02, Wetted Area Adjacent to Main Access Road, Looking Northwest ↑



Photograph 18. September 25, 2012: PLM-03, Large Marsh, Looking South ↑



Photograph 19. September 25, 2012: PLM-03, Small Creek, Looking North and Downstream ↑



Photograph 20. September 25, 2012: PLM-03, Bridge Crossing, Looking North ↑



Photograph 21. September 25, 2012: PLM-04, Wetted Area and Destroyed Culvert (Foreground & Center), Looking South ↑



Photograph 22. September 25, 2012: PLM-04, Overland Flow, Looking North ↑



Photograph 23. September 25, 2012: Small Wetted Area Along On-Site Road, Halfway Between Underground Portal and Mill, Looking East Towards Ragged Lake TDA ↑



Photograph 24. September 25, 2012: Small Wetted Area Along On-Site Road, South of Tailings Beach at Ragged Lake TDA, Looking East ↑



Photograph 25. September 25, 2012: Bedrock Shoreline of Fire Pond, Looking Northwest ↑



Photograph 26. September 25, 2012: Wetland Grass Shoreline of Fire Pond, Looking North ↑



Photograph 27. September 24, 2012: Fire Pond, On-Site road, and Fen South of Fire Pond, Looking North to Mill ↑