

Bipole III Transmission Project

Project Infrastructure

Final Preferred Route

Infrastructure

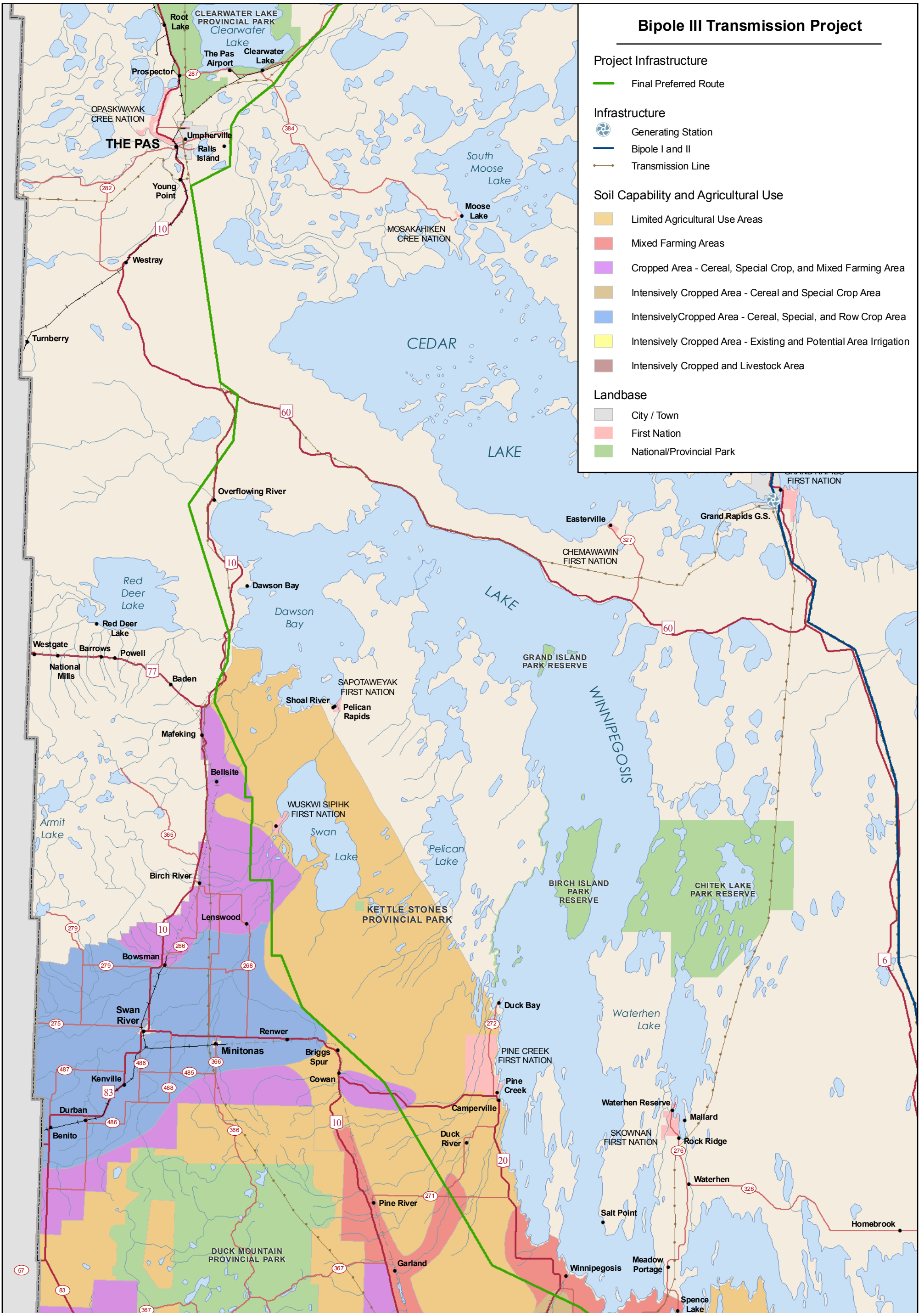
- Generating Station
- Bipole I and II
- Transmission Line

Soil Capability and Agricultural Use

- Limited Agricultural Use Areas
- Mixed Farming Areas
- Cropped Area - Cereal, Special Crop, and Mixed Farming Area
- Intensively Cropped Area - Cereal and Special Crop Area
- Intensively Cropped Area - Cereal, Special, and Row Crop Area
- Intensively Cropped Area - Existing and Potential Area Irrigation
- Intensively Cropped and Livestock Area

Landbase

- City / Town
- First Nation
- National/Provincial Park



Coordinate System: UTM Zone 14N NAD83
 Data Source: MB Hydro, MMM, Stantec, ProvMB, NRCAN, J&V Nielsen
 Date Created: July 13, 2011

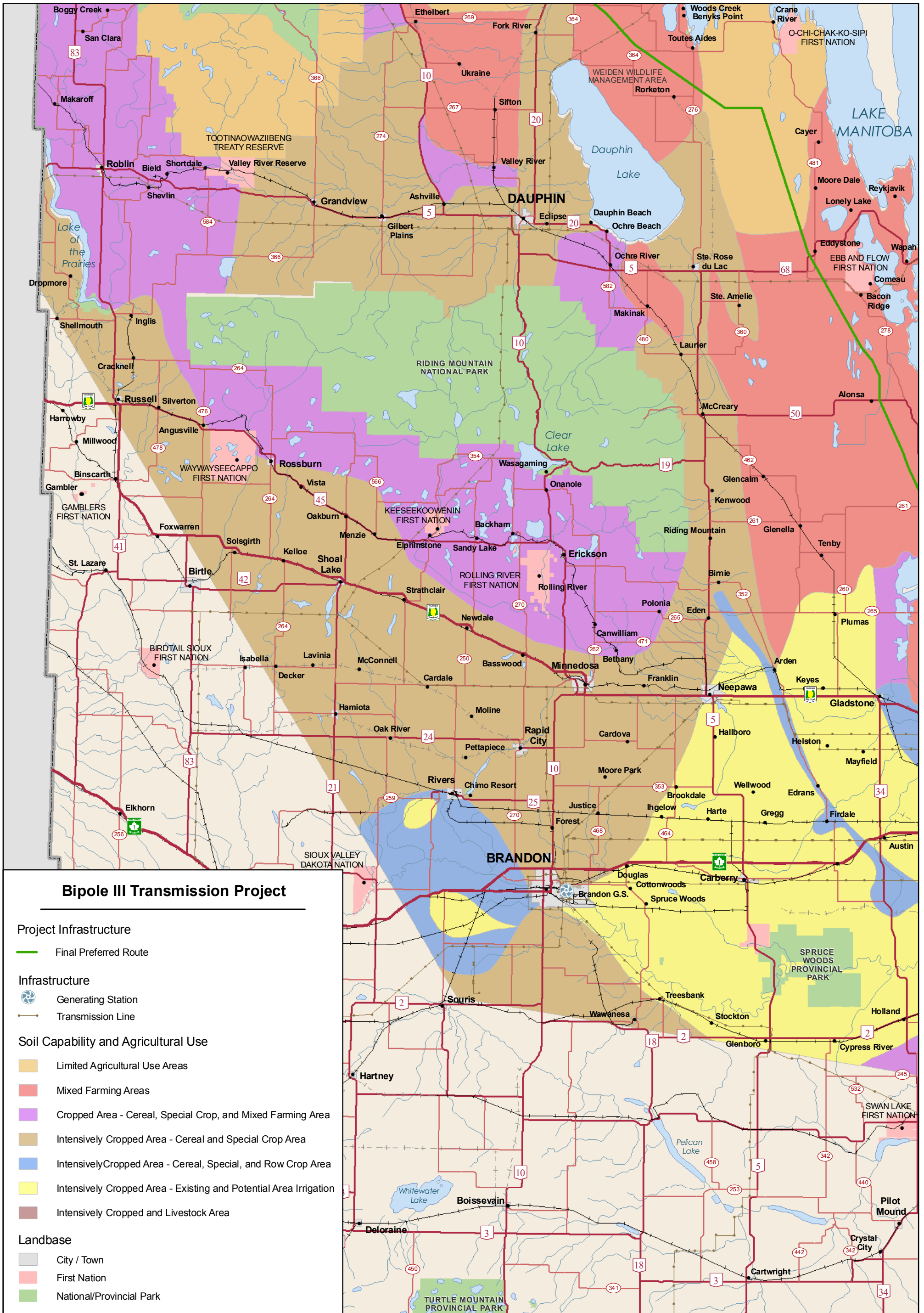
0 6 12 Kilometres
 0 6 12 Miles



1:750,000

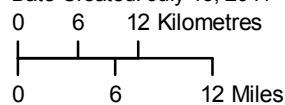
Soil Capability and Agricultural Use





Coordinate System: UTM Zone 14N NAD83
 Data Source: MB Hydro, MMM, Stantec, ProvMB, NRCAN, J&V Nielsen

Date Created: July 13, 2011



1:750,000

Soil Capability and Agricultural Use



Bipole III Transmission Project

Project Infrastructure

- Final Preferred Route
- Converter Station

Infrastructure

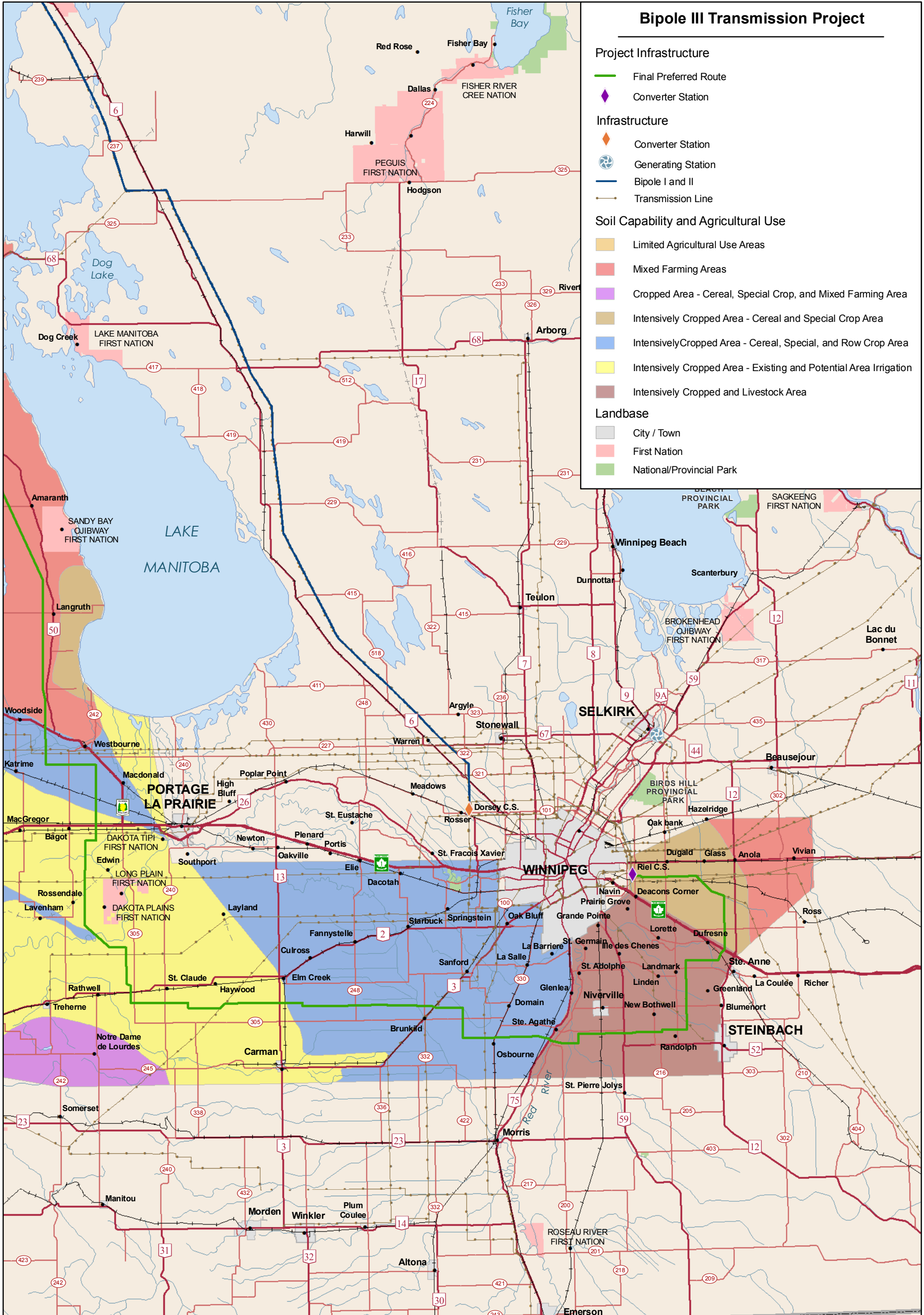
- Converter Station
- Generating Station
- Bipole I and II
- Transmission Line

Soil Capability and Agricultural Use

- Limited Agricultural Use Areas
- Mixed Farming Areas
- Cropped Area - Cereal, Special Crop, and Mixed Farming Area
- Intensively Cropped Area - Cereal and Special Crop Area
- Intensively Cropped Area - Cereal, Special, and Row Crop Area
- Intensively Cropped Area - Existing and Potential Area Irrigation
- Intensively Cropped and Livestock Area

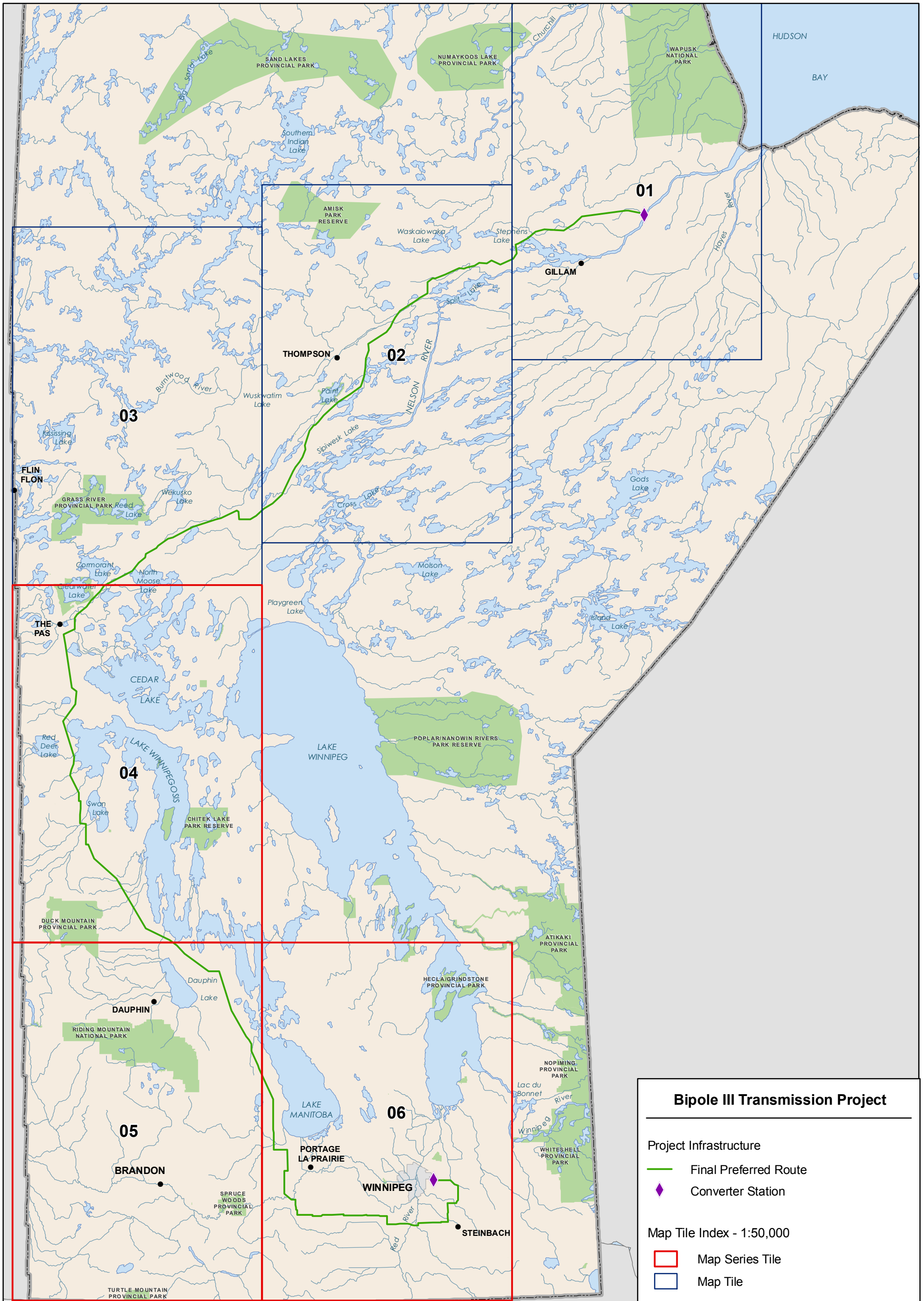
Landbase

- City / Town
- First Nation
- National/Provincial Park



Coordinate System: UTM Zone 14N NAD83
 Data Source: MB Hydro, MMM, Stantec, ProvMB, NRCAN, J&V Nielsen
 Date Created: July 13, 2011
 0 6 12 Kilometres
 0 6 12 Miles
 1:750,000

Soil Capability and Agricultural Use



Bipole III Transmission Project

Project Infrastructure

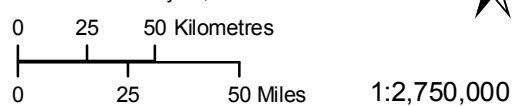
- Final Preferred Route
- Converter Station

Map Tile Index - 1:50,000

- Map Series Tile
- Map Tile



Coordinate System: UTM Zone 14N NAD83
 Data Source: MB Hydro, MMM, Stantec, ProvMB
 Date Created: July 13, 2011



1:2,750,000

Index of Map Series 200
 Soil Capability and Agricultural Use