

# Bipole III Transmission Project

## Project Infrastructure

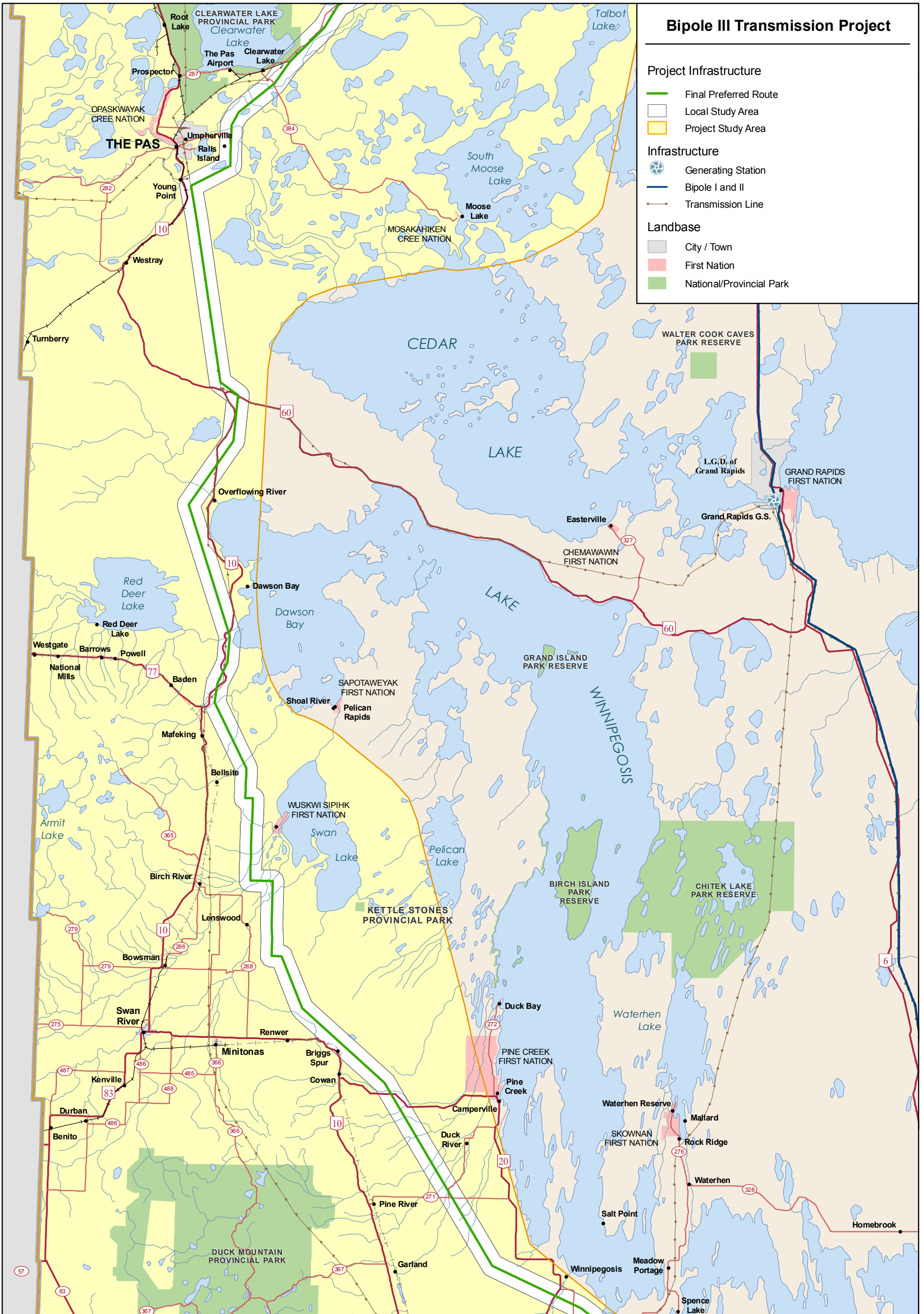
- Final Preferred Route
- Local Study Area
- Project Study Area

## Infrastructure

- Generating Station
- Bipole I and II
- Transmission Line

## Landbase

- City / Town
- First Nation
- National/Provincial Park



Coordinate System: UTM Zone 14N NAD83  
 Data Source: MB Hydro, MMM, Stantec, ProvMB, NRCAN  
 Date Created: July 13, 2011

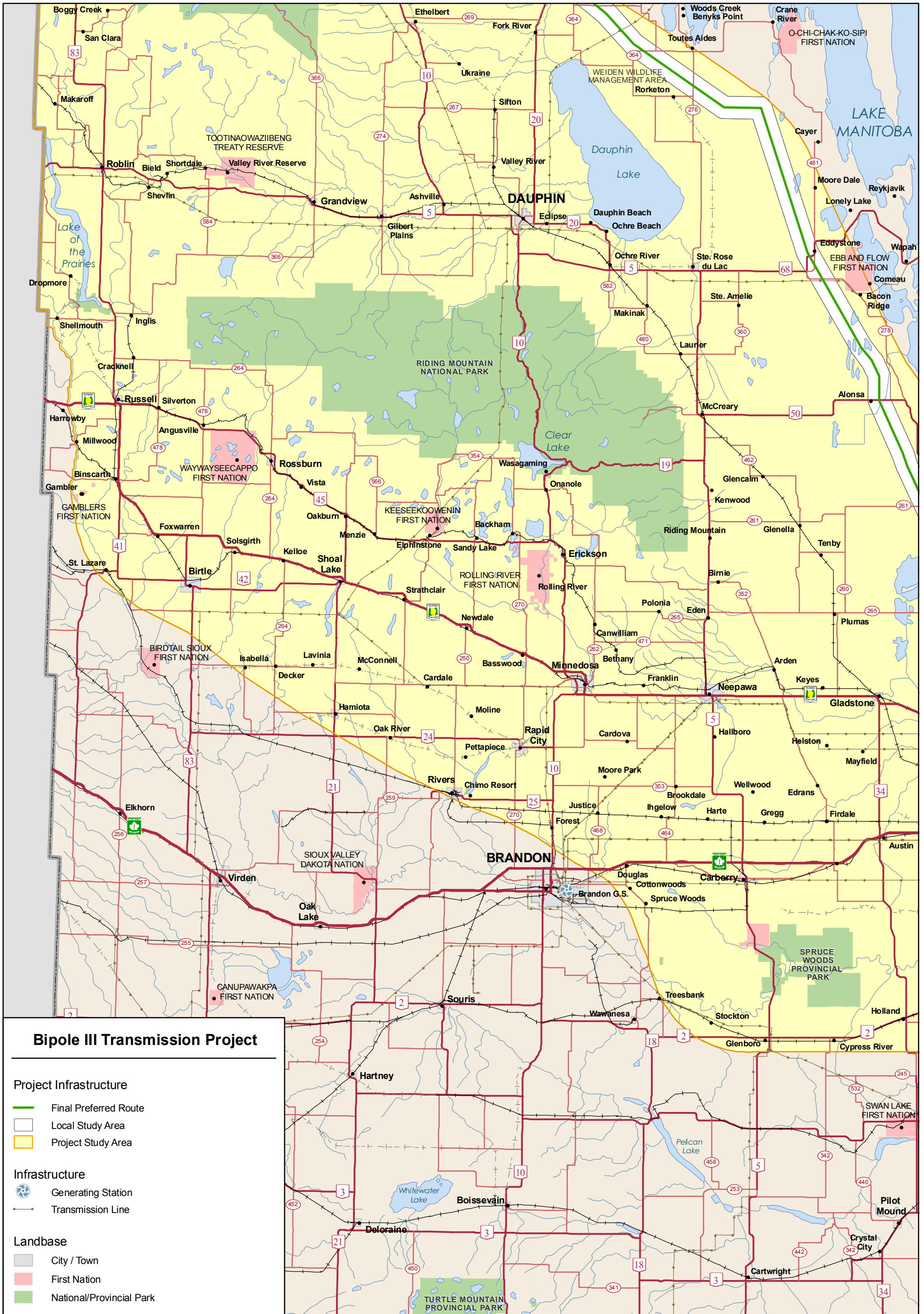
0 6 12 Kilometres

0 6 12 Miles



1:750,000

# Bipole III Study Area and Final Preferred Route



### Bipole III Transmission Project

#### Project Infrastructure

- Final Preferred Route
- Local Study Area
- Project Study Area

#### Infrastructure

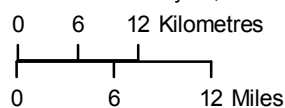
- Generating Station
- Transmission Line

#### Landbase

- City / Town
- First Nation
- National/Provincial Park

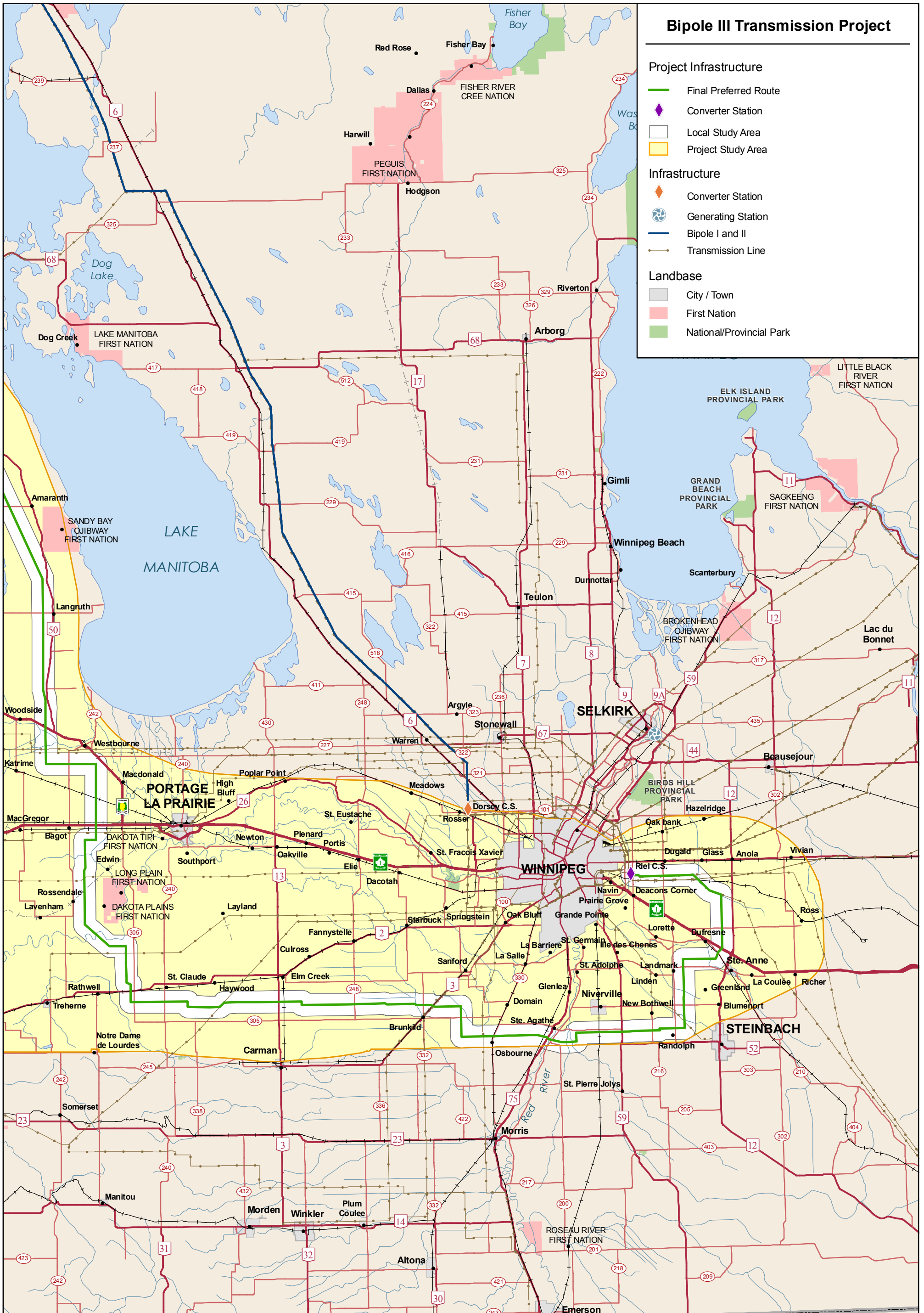


Coordinate System: UTM Zone 14N NAD83  
 Data Source: MB Hydro, MMM, Stantec, ProvMB, NRCAN  
 Date Created: July 13, 2011

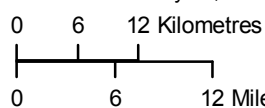


1:750,000

## Bipole III Study Area and Final Preferred Route

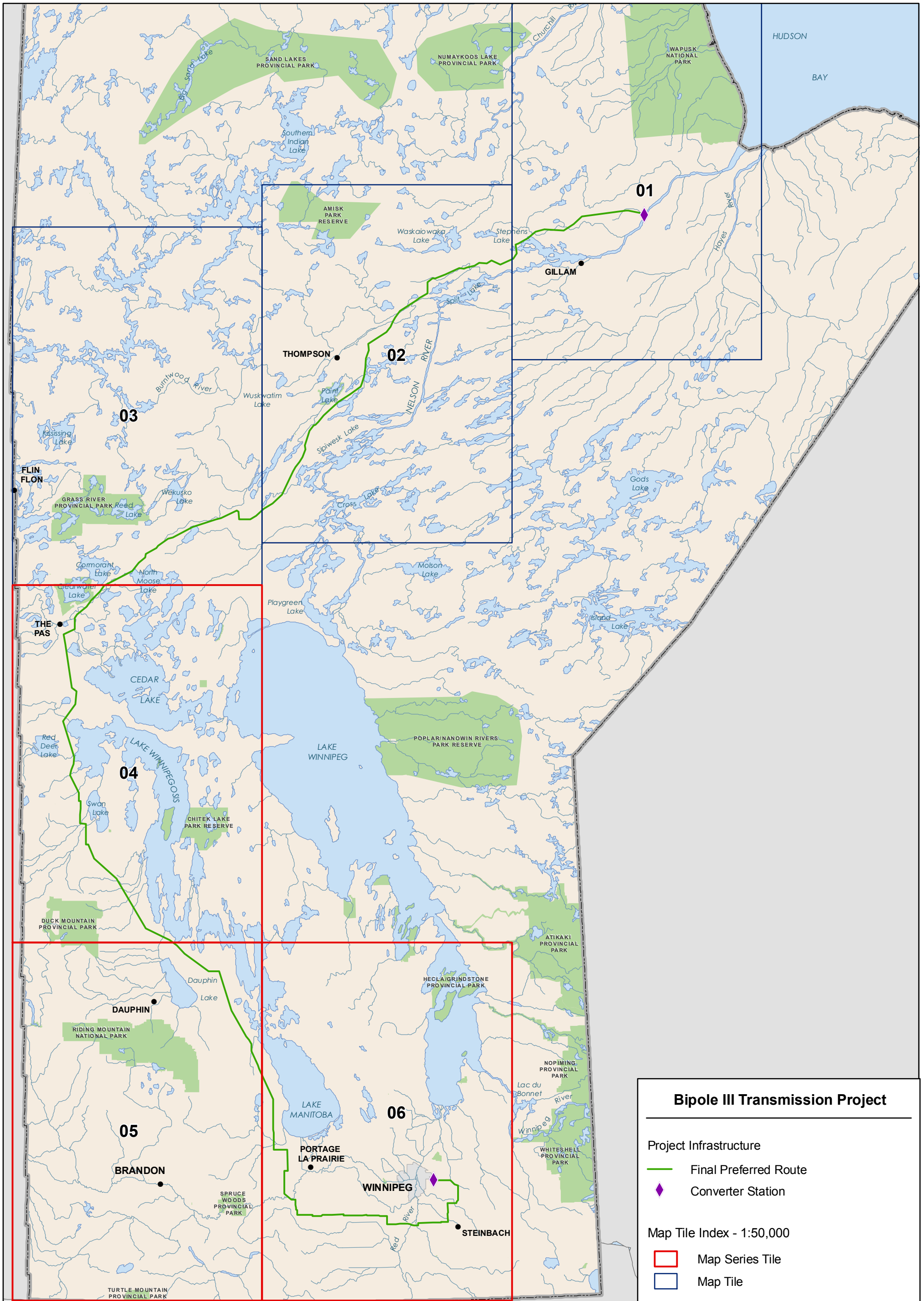


Coordinate System: UTM Zone 14N NAD83  
 Data Source: MB Hydro, MMM, Stantec, ProvMB, NRCAN  
 Date Created: July 13, 2011

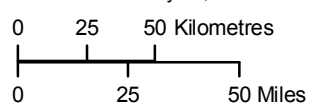


1:750,000

## Bipole III Study Area and Final Preferred Route



Coordinate System: UTM Zone 14N NAD83  
 Data Source: MB Hydro, MMM, Stantec, ProvMB  
 Date Created: July 13, 2011



1:2,750,000



## Index of Map Series 500

### Bipole III Study Area and Final Preferred Route