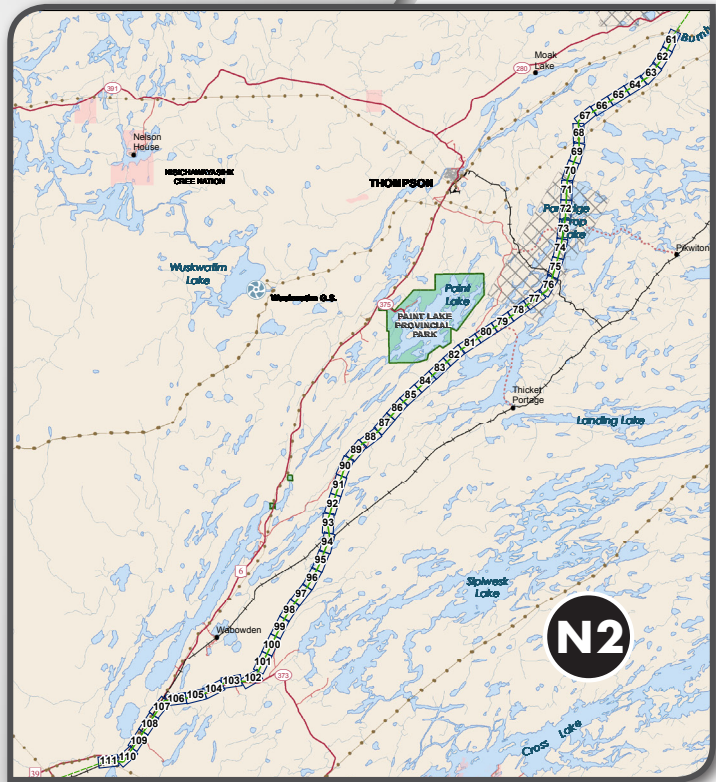
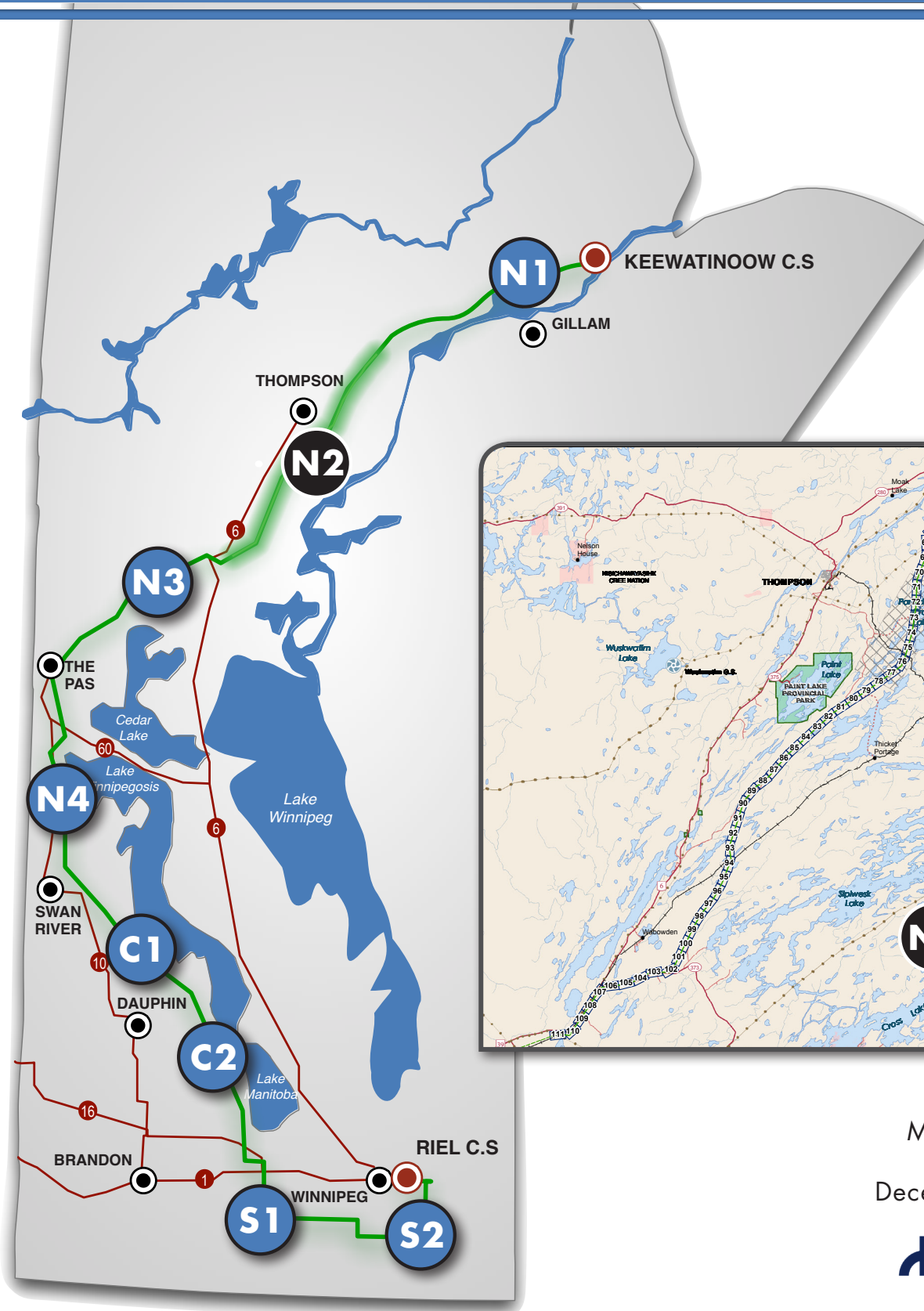


BIPOLE III TRANSMISSION PROJECT CONSTRUCTION ENVIRONMENTAL PROTECTION PLAN - SECTION N2



Submitted to:
Manitoba Hydro

December 2, 2013



**BIPOLE III TRANSMISSION
PROJECT
CONSTRUCTION
ENVIRONMENTAL PROTECTION
PLAN
TRANSMISSION SECTION N2**

PREFACE

MANITOBA HYDRO'S ENVIRONMENTAL COMMITMENT

Manitoba Hydro is committed to protect and preserve natural environments and heritage resources affected by its projects and facilities. This commitment and a commitment to continually improve environmental performance is demonstrated through the company's Environmental Management System, which is ISO 14001 certified.

Environmental protection can only be achieved with the engagement of Manitoba Hydro employees, consultants, local communities and contractors at all stages of projects from planning and design through construction and operational phases.

As stated in the Corporate Environmental Management Policy:

“Manitoba Hydro is committed to protecting the environment by:

- preventing or minimizing any adverse impacts on the environment, and enhancing positive effects*
- continually improving our Environmental Management System;*
- meeting or surpassing regulator, contractual and voluntary requirements*
- considering the interests and utilizing the knowledge of our customers, employees, communities, and stakeholders who may be affected by our actions;*
- reviewing our environment objectives and targets annually to ensure improvement in our environmental performance; and*
- documenting and reporting our activities and environmental performance.”*

Manitoba Hydro's environmental management policy has been used to guide the development of the environmental protection program for the proposed Project. Implementation of the program is practical application of the policy and will demonstrate Manitoba Hydro's dedication to environmental stewardship.

Manitoba Hydro recognizes the unique relationship Aboriginal communities have with their areas of use and is appreciative to all the communities who took time to share information about their history and culture as well as their valued knowledge and perspectives with regards to the Bipole III Transmission Project. Aboriginal Traditional Knowledge that has been shared assisted Manitoba Hydro in: developing a greater understanding of the study area; identifying potential Project effects; planning and designing the Project; and developing mitigation measures, which can be found throughout this document and other project environmental plans. Manitoba Hydro understands the importance of continuing to engage with Aboriginal communities and to work to address outstanding concerns.

Adaptive management is being implemented within the Environmental Protection Program to be responsive and adaptive to changes to the project and on the landscape, stakeholder and aboriginal concerns, as well as inputs from our inspection and monitoring programs.

TABLE OF CONTENTS

1.0	INTRODUCTION	1-0
1.1	OVERVIEW OF ENVIRONMENTAL PROTECTION PLAN	1-1
1.2	ROLES, RESPONSIBILITIES AND REPORTING	1-2
1.2.1	Environmental Protection	1-2
1.2.2	Dedicated On-Site Environmental Officer(s)/Supervisor(s)	1-2
1.2.3	Environmental Improvement Orders	1-3
1.2.4	Manitoba Hydro Environmental Stop Work Order	1-3
1.3	ENVIRONMENTAL PROTECTION INFORMATION MANAGEMENT SYSTEM	1-8
1.4	REGULATORY REQUIREMENTS.....	1-8
2.0	ENVIRONMENTAL CONSIDERATIONS.....	2-1
2.1	RIPARIAN MANAGEMENT	2-1
2.1.1	Riparian Mitigation.....	2-2
2.2	WILDLIFE AND HABITAT	2-3
2.2.1	Birds and Habitat.....	2-3
2.2.2	Mammals.....	2-3
2.3	SOILS AND TERRAIN	2-3
2.3.1	Soils	2-3
2.3.2	Heritage.....	2-3
2.3.3	Spiritual and Cultural	2-4
2.4	OTHER.....	2-4
2.4.1	Access.....	2-4
3.0	ENVIRONMENTAL PROTECTION PLAN ORIENTATION AND AWARENESS	3-1
3.1	PRE-JOB MEETING (ENVIRONMENTAL COMPONENT)	3-1
3.2	CONTRACTOR START-UP MEETING	3-2
3.3	WEEKLY PROGRESS MEETINGS	3-2
3.4	DAILY JOB PLANNING MEETINGS	3-2

4.0	CONTRACTOR-DEVELOPED ENVIRONMENTAL MANAGEMENT PLANS	4-1
5.0	ENVIRONMENTAL MITIGATION REQUIREMENTS	5-1
5.1	SPECIFIC GENERAL MITIGATION REQUIREMENTS	5-1
5.2	GENERAL MITIGATION TABLES	5-2
6.0	MAP SHEETS AND MITIGATION TABLES	6-1

APPENDICIES

APPENDIX A:	CONTACT LIST
APPENDIX B:	ENVIRONMENTAL PRE-WORK ORIENTATION RECORD – ATTACH SIGNED COPY
APPENDIX C:	ENVIRONMENTAL LICENCES, APPROVALS AND PERMITS
APPENDIX D:	FRAMEWORKS FOR CONTRACTOR-DEVELOPED ENVIRONMENTAL PLANS
APPENDIX E:	CONTRACTOR-DEVELOPED ENVIRONMENTAL PLANS
APPENDIX F:	FISHERIES AND OCEANS CANADA OPERATIONAL STATEMENTS

LIST OF TABLES

		Page
Table 1-1:	Environmental Roles and Responsibilities of Personnel During the Construction Phase of Section N2.....	1-4
Table 2-1:	Summary of ESS in Section N2.....	2-1
Table 2-2:	Riparian Buffer Distances Based on Slope	2-2

LIST OF FIGURES

	Page
Figure 1-1: Relationship between Environmental Protection Documents	1-1
Figure 1-2: Environmental Communication Reporting Structure	1-7
Figure 2-1: Ordinary High Water Mark (OHWM) Shown for an Inland Lake (left) and a Flowing Waterbody (right)	2-2

LIST OF MAPS

	Page
Overview of Section N2	Section 1
Environmentally Sensitive Site Location Map Sheets (1:10,000)	Section 6

1.0 INTRODUCTION

The purpose of this Construction Environmental Protection Plan (CEnvPP) is to provide information that will guide contractors and field personnel in constructing Section N2 of the Bipole III Transmission Project (the 'Project') in a manner that meets or surpasses environmental legislation requirements. The CEnvPP outlines the commitments and efforts that will be taken by Manitoba Hydro (MH) and contractors to protect the environment and mitigate potential environmental effects that may occur during construction of the Project. The use of environmental protection plans is a practical and direct implementation of Manitoba Hydro's commitment to responsible environmental stewardship.

This CEnvPP provides guidance for the implementation of environmental protection measures for Section N2 of the Project's 500-kV HVdc (high voltage direct current) transmission line (Map 1). Development of Section N2 will originate approximately 36 km south west of Assean Lake and will terminate approximately 33km south west of Wabowden. The Section N2 project footprint, or total area to be cleared, will be a 66-m-wide right-of-way along a length of approximately 201 kilometers. Clearing is proposed to start in the winter of 2014.

This document provides general and specific mitigation measures to reduce the potential for environmental effects that may occur during the Project's construction phase. It is designed to be a resourceful, user-friendly tool to guide onsite implementation of environmental protection measures. This document provides contractors and field personnel with details on 'where to' implement environmental protection measures. Where contractors have experience using other federally or provincially accepted methods of environmental protection, they are encouraged to discuss with MH Environmental Inspector.

1.1 OVERVIEW OF ENVIRONMENTAL PROTECTION PLAN

Part of Manitoba Hydro’s commitment to environmental protection includes the development of a comprehensive Environmental Protection Program (EPP) for the Project. This program includes the development of a Project-Level Environmental Protection Plan (EnvPP) and Construction EnvPPs (CEnvPPs) specific to each major Project component (Figure 1-1). The Project-Level EnvPP contains general environmental protection information applicable to all project components, provides a foundation for developing component-specific CEnvPPs, and is intended for project managers and regulators. The CEnvPPs provide general and specific environmental protection information for each project component and are intended for use by construction contractors and environmental staff.

A number of Environmentally Sensitive Sites (ESS) have been identified for Section N2. ESS are locations, features, areas, activities or facilities that were identified in the Bipole III Transmission Project EIS to be ecologically, socially, economically or culturally important or sensitive to disturbance and require protection during construction of the project. The determination of ESS has included the consideration of Aboriginal Traditional Knowledge (ATK). Manitoba Hydro will continue to engage with stakeholders and aboriginal communities in efforts to continually update this plan with sensitive sites and current knowledge as it is shared.

Fifty-one map sheets have been developed at a scale of 1:10,000 for Section N2 to present the location and spatial extent of ESS. Each map has corresponding tabular summary information including ESS feature information and relevant mitigation measures to address the potential environmental effects at each ESS site.

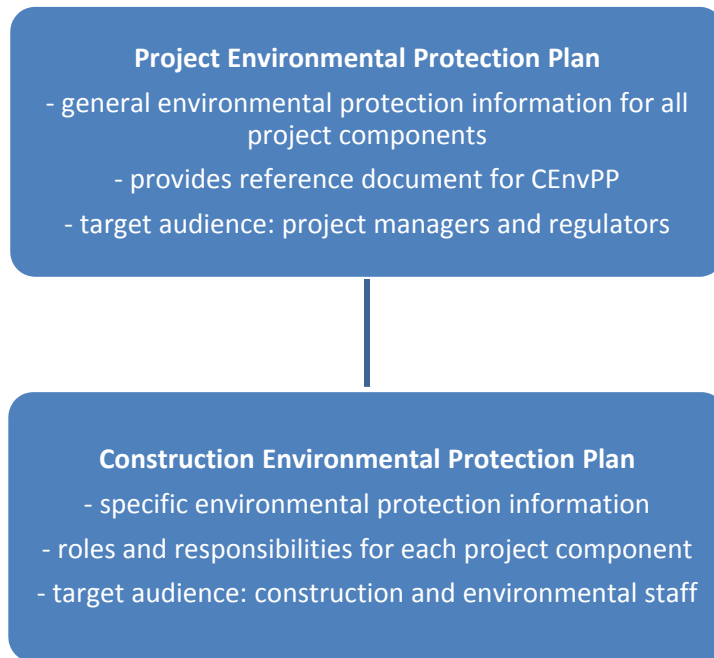
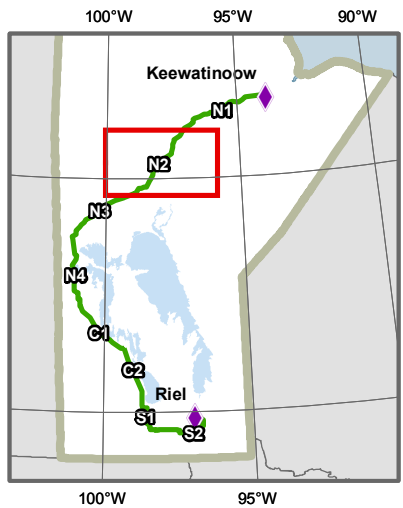
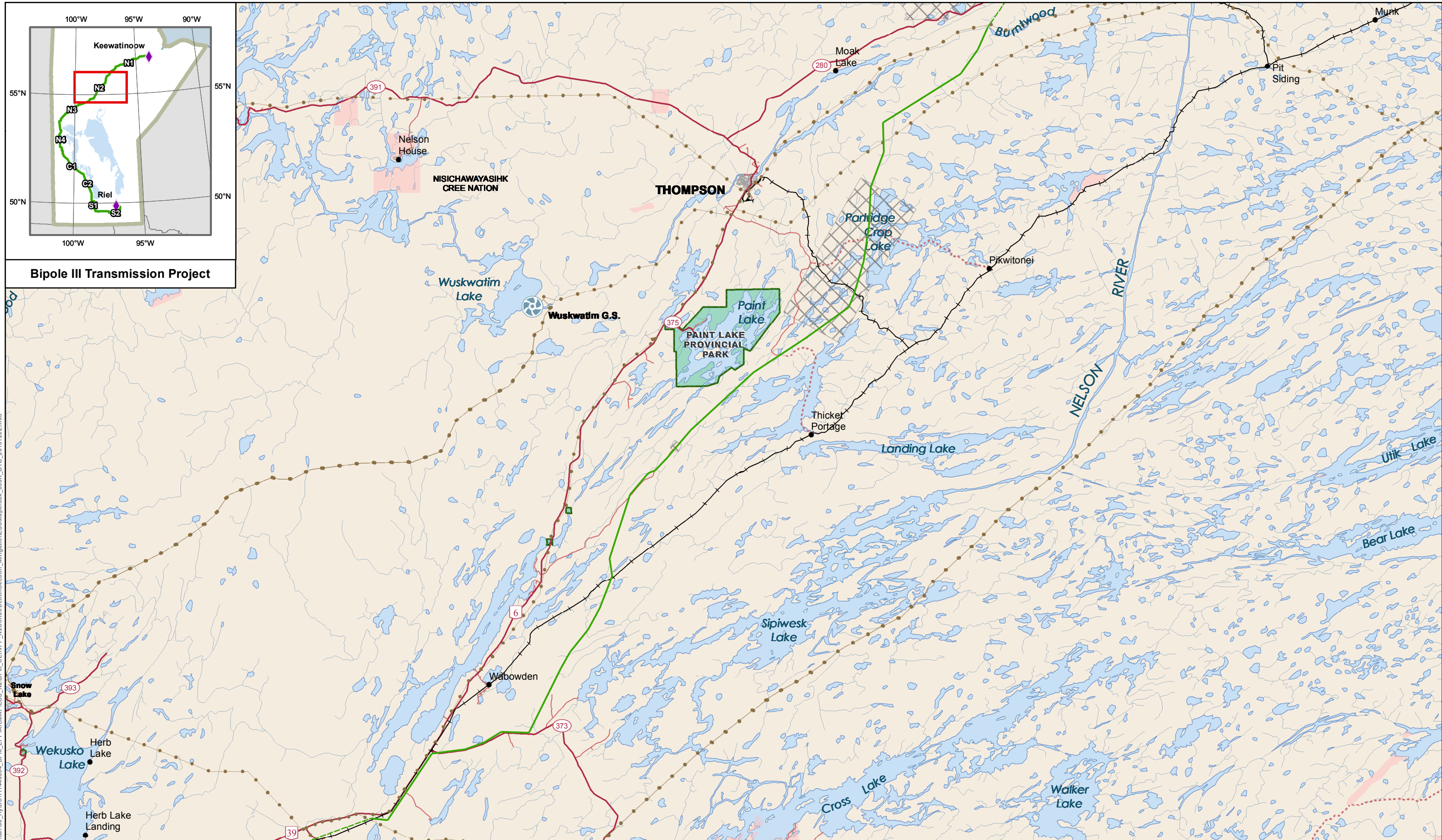


Figure 1-1: Relationship between Environmental Protection Documents



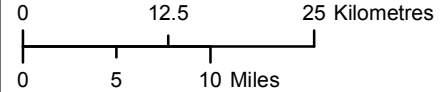
Bipole III Transmission Project



File Location: G:\GIS_Projects\Folder00_Hydro\111440064_BPIII_EPP\IA\MA\PIES_N2\BPIII_CEnvPP_N2ConstructionSection_Mitigation\ESM\MapIndex_650K_BT_BTB_20131202.mxd



Coordinate System: UTM Zone 14N NAD83
 Data Source: MB Hydro, Stantec, ProvMB, NRCAN
 Date Created: December 02, 2013



Legend			
---	Final Preferred Route		First Nation
---	Section N2		Existing Generation Stations
---	Transmission Line		Provincial Forest
	Mineral Rights		Provincial Park

**Bipole III Transmission Line Project
 Construction Environmental Protection Plan
 Region of N2 Construction Section**

Figure 1-1

1.2 ROLES, RESPONSIBILITIES AND REPORTING

This section outlines the major roles and responsibilities of those involved in the implementation of the CEnvPP for Section N2. A summary of roles and key responsibilities is found in Table 1-1.

Communication and reporting on environmental issues, monitoring and compliance will be as outlined in Figure 1-1. A contact list for key staff involved in supporting this CEnvPP is found in Appendix A.

1.2.1 Environmental Protection

Manitoba Hydro will provide copies of all available permits, licences, approvals and authorizations obtained for the Project to the Contractor. The contractor will provide Manitoba Hydro with copies of all available permits, licences, approvals and authorizations obtained for the Project. Electronic copies of all permits are available for download from the Environmental Protection Information Management System.

The Contractor will comply with the Environmental Protection Plans prepared for the Project, including mitigation measures identified during the environmental assessment phase and contained herein.

Environmental aspects of the work will be discussed during the Pre-Job Meeting, Weekly Progress Meetings, and Daily Job Planning Meetings.

Without limiting or otherwise affecting the generality or application of any other term or condition of the Contract, the Contractor shall:

- strictly comply with all Environmental Legislation and have suitable corrective and/or preventive measures in place to address any previous environmental warnings, fines or convictions; issued by regulatory agencies and/or Manitoba Hydro;
- do or cause to be done all things required or ordered, to mitigate environmental damage caused, directly or indirectly, by itself or by its servants, agents, employees or Subcontractors, accidentally or as a result of practices that are in contravention of the Contract or any Environmental Legislation.

1.2.2 Dedicated On-Site Environmental Officer(s)/Supervisor(s)

Before commencing the on-site work, the Contractor shall identify its dedicated on-site Environmental Officer(s)/Supervisor(s), who shall attend the Pre-Job Meeting (Environmental Component) at Manitoba Hydro's office to review environmental matters for the work. The dedicated on-site Environmental Officer(s)/Supervisor(s) shall be fully conversant with:

- Contractor's Environmental Practices and Policies.
- All applicable Environmental Legislation;
- The conditions of Project and Construction Environmental Protection Plans.

1.2.3 Environmental Improvement Orders

Failure to comply with the Environmental Protection section above or unsatisfactory performance in regards to any other environmental-related matter may result in Manitoba Hydro issuing Environmental Improvement Orders to the Contractor.

The Environmental Improvement Order, once communicated verbally or in writing are considered “effective immediately”. Manitoba Hydro will establish a compliance date for each Environmental Improvement Order issued. The Contractor must provide written documentation of the actions taken regarding the environmental improvement order as follows:

The Contractor shall:

- within the expiry date of the period specified in the order or any extension thereof , prepare a written report on the measures taken to remedy the contravention and on any measures yet to be taken;
- send a copy of the report to the Manitoba Hydro Representative who made the order;
- if applicable, provide a copy of the report to the employee(s) involved; and
- review the contravention with all employees at regular weekly meeting and post in a prominent place at or near the workplace.

1.2.4 Manitoba Hydro Environmental Stop Work Order

Manitoba Hydro may issue an Environmental Stop Work Order where any activities which are being, or are about to be, carried on in a workplace, involve or are likely to involve an imminent risk of serious impact to the environment, or where a contravention specified in an Environmental Improvement Order was not remedied and warning was given. The Environmental Stop Work Order, once communicated verbally or in writing is considered “effective immediately”, for any one or more of the following matters

- the cessation of those activities;
- that all or part of the workplace be vacated;
- that no resumption of those activities be permitted by the Contractor.
- that a Manitoba Hydro issued stop work order remains in effect until it is withdrawn in writing by Manitoba Hydro.
- that Manitoba Hydro will not be held responsible for delays to the work or be required to compensate the contractor for any matters arising as a result of the Manitoba Hydro issued Environmental Stop Work Order.

Note: A Manitoba Hydro-issued Environmental Stop Work Order does not prevent the Contractor from completing any work or activity that may be necessary in order to remove the risk of injury referred to above.

Table 1-1: Environmental Roles and Responsibilities of Personnel During the Construction Phase of Section N2

Role	Key Responsibilities
Project Engineer	<ul style="list-style-type: none"> Accountable for all aspects of this component of the Bipole III Transmission Project including regulatory compliance and environmental performance. Oversees Construction Supervisors and Senior Environmental Officer who are responsible for implementing environmental protection measures and ensuring regulatory compliance.
Licensing and Environmental Assessment Department	<ul style="list-style-type: none"> Provides advice and guidance on environmental protection matters. Monitors inspection reports and monitoring information, and prepares annual report as per regulatory requirements. Liaises with Manitoba Conservation Licensing Approvals Branch
Senior Environmental Assessment Officer	<ul style="list-style-type: none"> Advises Project Engineer and Construction Supervisor on implementation of Construction Environmental Protection Plan Liaises with Licensing and Environmental Assessment Department Liaises with Regional regulatory authorities Provides advice and guidance to Construction Supervisors and Environmental Inspectors for non-compliance situations, environmental incidents and emergencies. Issues Environmental Improvement and Stop Work orders for environmental non-compliance situations and incidents. Supervises Environmental inspectors/monitors Provide Support and guidance to contractors regarding CEnvPP Responsible for implementing and ongoing compliance monitoring to ensure consistent and accurate reporting into the Environmental Protection Information Management System
Construction Supervisor(s)	<ul style="list-style-type: none"> Reports to the Project Engineer. Reviews environmental inspection reports with the Construction Contractor, and ensures remedial actions or responses to non-compliance situations or incidents are implemented as required. Works with the Senior Environmental. Assessment Officer and Inspectors to ensure implementation of environmental protection Ensures that appropriate authorities are notified in emergency or incident situations. Issues Environmental Improvement and stop work orders as required for non compliance issues.
Environmental Inspector / Construction Inspector	<ul style="list-style-type: none"> The Environmental Inspectors reports to the Senior Environmental Assessment Officer and provides advice and guidance to the Construction Supervisor. Monitor the project for compliance of the CEnvPP, Environmental License and other environmental regulatory requirements. Assist the Contractors Environmental Officer in ensuring that all necessary information is covered in the Contractors pre-project employee orientation. The Construction Inspector will carry out the duties of the Environmental Inspector when the Environmental Inspector is not on site. Conducts site inspections regularly and ensures reports are submitted to the Environmental Protection Information Management System Weekly and monthly reports containing information on activities carried out, effectiveness of actions

	<p>and outstanding issues are also submitted to Environmental Protection Information Management System.</p> <ul style="list-style-type: none"> • Assists in developing solutions for environmental issues on-site with the Construction Supervisor and the Contractor. • Prescribes and ensures follow up mitigation measures are implemented. • Ensures all ESS sites are correctly identified, delineated and flagged/marked in the field. • Environmental Inspectors and Construction Inspectors work cooperatively to identify ESS site locations and ensure that prescribed mitigation is being implemented and meeting regulatory requirements.
<p>Manitoba Hydro Safety, Health, Emergency Response Officers</p>	<ul style="list-style-type: none"> • Responsible for ensuring implementation of Manitoba Hydro Safety policies and programs at the various construction sites. The officers provide information and advice to the Construction Supervisor. • Conduct periodic site safety visits.

<p>Construction Contractor(s) (Project Manager / Construction Supervisor)</p>	<ul style="list-style-type: none"> • Accountable for all regulatory and environmental prescriptions (i.e., follow CEnvPP and mitigation measures prescribed) • Ensure all contractor project staff are adequately trained/informed of pertinent environmental requirements of the Project related to their position • Report any discoveries of non-compliance, accidents or incidents to the Construction Supervisor. • Ensure that all remedial actions are carried out as per Manitoba Hydro instruction • Ensure all discoveries of heritage resources, human remains, paleontological finds, environmentally sensitive sites, etc. are reported to the Construction Supervisor • Responsible for other permits as outlined in Appendix D
<p>Construction Staff</p>	<ul style="list-style-type: none"> • Accountable for all regulatory and environmental prescriptions (i.e., follow CEnvPP and mitigation measures prescribed) • Ensure adequately trained with respect to, and informed of pertinent, environmental requirements of the Project related to their position • Report any discoveries of non-compliance, accidents or incidents to the Construction Supervisor. • Ensures that all remedial actions are carried out as per Manitoba Hydro instruction • Ensures all discoveries of heritage resources, human remains, paleontological finds, environmentally sensitive sites, etc. are reported to the Construction Supervisor
<p>Construction Contractor's Environmental Officers</p>	<ul style="list-style-type: none"> • Responsible for implementation, coordination and verification of pre-project employee environmental orientation • Ensures that the contractor employees adhere to all aspects of the construction Environmental Protection Plan • Provides information and advice to the Construction Contractor employees on environmental protection and safety matters. • Responsible for implementation of the emergency response and hazardous substances plans, and other related topics. • Liaises with Environmental Inspector and Hydro Field Safety Officers
<p>Environmental Monitor(s)</p>	<ul style="list-style-type: none"> • Environmental Monitors conduct field monitoring activities as outlined in the monitoring plans (access, wildlife, vegetation monitoring). • Provide Liason opportunities for the communities and reports the protection and preservation of community natural resources. • Assists in the locating and delineating of environmentally sensitive sites. • Works with Environmental Inspector and reports to the Senior Environmental Assessment Officer.
<p>Community Liaison</p>	<ul style="list-style-type: none"> • Primary contact for disseminating information regarding this project to their community • Developing project communication materials for their community • Identifies community concerns and interests and communicates to Construction Supervisor

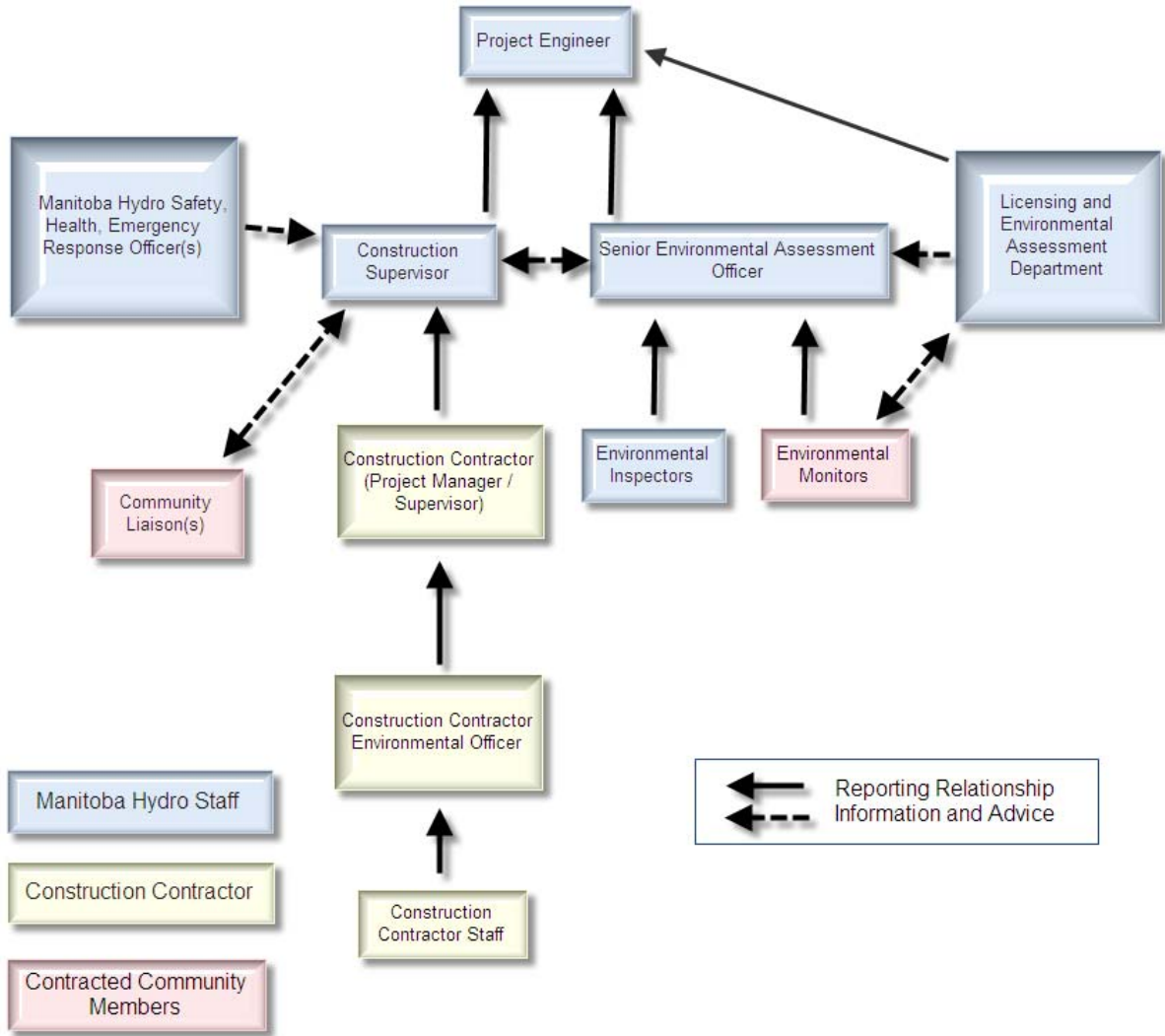


Figure 1-2: Environmental Communication Reporting Structure

1.3 ENVIRONMENTAL PROTECTION INFORMATION MANAGEMENT SYSTEM

An Environmental Protection Information Management System (EPIMS) will provide a single interface to store all environmental documentation. It will be utilized by project staff to submit permits, inspection reports, plans, logs, checklists, etc. for the management of all environmental protection implementation, regulatory compliance and incident reporting. The EPIMS will be developed by Manitoba Hydro and be fully integrated with project communications, inspection, biophysical, socio-economic, and heritage monitoring.

1.4 REGULATORY REQUIREMENTS

All relevant regulatory approvals for the Bipole III Transmission Project will be obtained by Manitoba Hydro prior to construction. All documentation will be kept on-site by both the contractor and Manitoba Hydro personnel. Manitoba Hydro requires that its employees and contractors comply with all Federal and Provincial Regulatory requirements relating to the construction, operations and decommissioning of its projects and facilities. All Project licences, approvals and permits obtained can be found in Appendix C: Environmental Licences, Approvals and Permits and EPIMS.

2.0 ENVIRONMENTAL CONSIDERATIONS

Important environmental considerations for pre-construction planning and construction activities are required at environmental sensitive sites (ESS), which include locations, features, areas, activities or facilities that were identified in the Bipole III Transmission Project EIS to be ecologically, socially, economically or culturally important or sensitive to disturbance. These ESS require protection and mitigation during construction of Section N2. ESS include riparian areas, valued and protected vegetation, wildlife and habitats, cultural (heritage/archaeological and spiritual sites), unique terrain features, erosion- and compaction-prone soils, permafrost, and other important locations requiring specific protection (e.g., resource use, access).

A summary of environmentally sensitive sites for the Project are identified in Table 2-1 and described in further detail below.

Table 2-1: Summary of ESS in Section N2

ESS Categories	Groups	Sensitivity Type	No. Sites
Riparian Features	Water Crossings	Fish Habitat Quality	66
Vegetation, Wildlife and Habitat	Birds and Habitat	Migratory/Foraging/Breeding Habitat	46
	Mammals and Habitat	Summer and Winter Habitats	1
	Vegetation	Habitat	1
Soils and Terrain	Soils	Permafrost	82
Heritage	Heritage/ Archaeological/ Spiritual and Cultural	Archaeological	4
Other ESS	Access-Intersections	Snowmobile Trails/ Canoe Routes	4
	Resource Use	Forestry	1

2.1 RIPARIAN MANAGEMENT

Based on characteristics and qualities of waterbodies in, or near the project footprint, Contractors will need to modify land clearing, machinery passage and other construction activity, these sites will be identified on the Map Sheets in Section 6.0.

Riparian Buffers (as shown in Table 2-2) are applied to riparian habitats within the Project Footprint in which all shrub and herbaceous vegetation will be retained and all trees that do not violate Manitoba Hydro vegetation clearance requirements will be retained. For slopes greater than 50% site investigation and prescription by MH Senior Environmental Assessment Officer is required. **7 meter Machine free**

zones are work areas where restricted activities such as low disturbance clearing are permitted by reaching into zone with equipment but not entering the zone except at trail crossing.

Table 2-2: Riparian Buffer Distances Based on Slope

Slope of Land Entering Waterway (%)	Width of Riparian Buffer (m)
10	30
20	40
30	55
40	70
50	85

Boundaries of **Riparian Buffers** and **Machine Free Zones** are measured from the **ordinary high water mark (OHWM)** (Figure 2-1). Setbacks are measured from the OHWM or from a defined riparian boundary as delineated by an Aquatics Specialist.

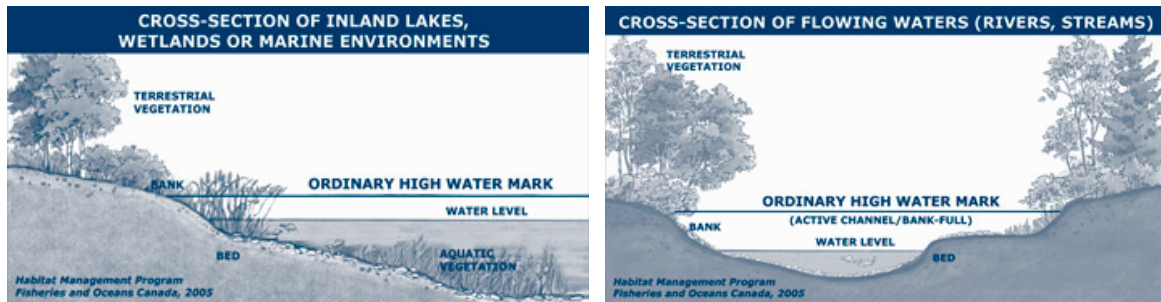


Figure 2-1: Ordinary High Water Mark (OHWM) Shown for an Inland Lake (left) and a Flowing Waterbody (right)

(Source: Department of Fisheries and Oceans, MB 2009)

2.1.1 Riparian Mitigation

Activities associated with project construction pose a low risk to fish habitat. Because of this low level of risk, Operational Statements (OS) developed by the Fisheries and Oceans Canada will be applied to modify construction of overhead lines, temporary stream crossings, ice bridges and snow fills, and dry open cut stream crossings (Appendix F). In addition to Fisheries and Oceans Canada OS requirements, Contractors will implement setbacks and buffers as indicated on Site-specific information the Map Sheets Section 6.0.

2.2 WILDLIFE AND HABITAT

2.2.1 Birds and Habitat

Vegetation removal activities such as clearing and ground stripping can be destructive to birds and their habitat, such as tree and ground nests, as well as areas in which they find food (foraging areas). Birds and their habitat are particularly vulnerable during the breeding season when they mate, lay eggs and raise their young, as they are not able to relocate away from areas of disturbance. Migratory birds, such as geese, ducks and songbirds, and their habitat are protected by federal and international regulation, which prohibits killing, harassing or destroying the habitat of these birds that migrate to other countries.

2.2.2 Mammals

Large-bodied mammals, such as caribou and moose, are considered sensitive to disturbance. The breeding grounds and habitat that support these species are important to maintaining their populations, which may be in decline. Provincial and federal regulation protects species that are considered rare or endangered and their habitat from disturbance.

2.3 SOILS AND TERRAIN

2.3.1 Soils

As the basis of natural, medicinal, spiritual and commercial vegetation, soils and their quality are an important part of ecosystem health and human wellbeing. The types of soil considered to be sensitive are topsoil (the thin, nutrient rich surface soil layer), permafrost (soil that remains frozen for more than one year) and soils susceptible to wind erosion. Soils are generally sensitive to loss by erosion or mixing with less suitable soils and quality degradation from compaction. Compaction of permafrost soils can impact their natural insulation causing soils to become unstable.

2.3.2 Heritage

Archaeological sites, or sites where historic and pre-historic artefacts of human activity are found, are sensitive to disturbance and loss from ground disturbance activities, such as clearing and excavation. Artefacts may include tools and objects, such as arrowheads, pottery shards or bottles, or burial sites and human remains. These sites and objects are protected under legislation as a part of our common heritage.

2.3.3 Spiritual and Cultural

Sites identified as having spiritual or cultural importance through Aboriginal Traditional Knowledge (ATK) or other communications are considered sensitive to disturbance and should be respected for the values they have to local communities.

2.4 OTHER

2.4.1 Access

Existing intersections, such as those for trails, provincial trunk highways (PTHs), provincial roads (PRs) and railways, are considered sensitive to change or conflicting land uses. As a fixed component of the larger transportation network, intersections are difficult to close or relocate. Use of trails is important for both recreational, commercial and subsistence hunters, gatherers and trappers, ensuring there is safe access to these trails is important to minimize effects on resource users.

3.0 ENVIRONMENTAL PROTECTION PLAN ORIENTATION AND AWARENESS

3.1 PRE-JOB MEETING (ENVIRONMENTAL COMPONENT)

A pre-job meeting will be held between the Contractor (senior project staff including construction supervisors, environmental/safety officer) and Manitoba Hydro (senior staff including Project Engineer or designate, the Senior Environmental Assessment Officer, Construction Supervisor and the Environmental Inspector).

The environmental portion of this meeting will include the following:

- A review of Manitoba Hydro's Environmental Principles and all environmental specifications of the Contract;
- Transfer of further relevant information or precautions that Manitoba Hydro is aware of and which pertain to the job;
- Procedures/requirements for dealing with environmental stop work orders or improvement orders;
- Reporting of environmental incidents and emergencies;
- Documentation needs including the review of all pertinent forms (i.e. job planning form; environmental checklist);
- Requirement to educate/train all Project employees with respect to the requirements of the Construction EnvPP.

The Contractor shall communicate to all field supervisors, subcontractors and work crews the work specifications, environmental requirements and information provided during the pre-job meeting and notify the Senior Environmental Assessment Officer in writing when it has been completed.

3.2 CONTRACTOR START-UP MEETING

A pre-work orientation meeting is held by the contractor with field crews prior to the initiation of work to ensure that they are aware of the environmental requirements of work at that location. Should project conditions dictate a change in work location, another start-up meeting may be convened.

The Contractor is required to ensure minutes, attendance records, and all other pertinent information is recorded and distributed. Manitoba Hydro will attend and if asked could provide an overview of the environmental concerns/ESS.

In situations where a new employee joins the project it is the responsibility of the contractor's Environment Officer to ensure that that employee has been provided with the necessary information and/or training related to the environmental aspects of the project. The contractor will be required to document all instances of new employees to demonstrate that they have received the necessary training.

3.3 WEEKLY PROGRESS MEETINGS

Senior field staff will meet on a weekly basis to review and discuss progress to date and planned upcoming work. This meeting will also review environmental requirements of the job and environmental precautions necessary. Manitoba Hydro will be responsible for the maintenance of minutes/documents related to these meetings.

3.4 DAILY JOB PLANNING MEETINGS

Field crew job planning meetings will be held daily prior to the commencement of any work. The daily job-planning meeting will be used to review environmental requirements of the job and environmental precautions necessary. All job planning meetings, including the environmental content, shall be documented by the Contractor.

4.0 CONTRACTOR-DEVELOPED ENVIRONMENTAL MANAGEMENT PLANS

Construction contractors will be required to develop environmental management plans as part of the Environmental Protection Program for this project component. The frameworks for plans developed by the contractor for the construction period are outlined below:

1. Emergency Preparedness and Response Plan
 - The Contractor shall be responsible to develop and implement a specific Emergency Preparedness and Response Plan for its work. This plan will be included as Appendix E when approved by the Senior Environmental Assessment Officer.
2. Waste and Recycling Management Plan
 - The Contractor shall be responsible to develop and implement a specific Waste and Recycling Management Plan for its work. This plan will be based on the Waste and Recycling Management Plan Framework (Appendix D) and be included as Appendix E when approved by the Senior Environmental Assessment Officer.
3. Erosion and Sediment Control Plan
 - The Contractor shall be responsible to develop and implement site-specific Erosion and Sediment Control Plans for its work. These plans will be based on the Erosion and Sediment Control Plan Framework (Appendix D) and be included as Appendix E when approved by the Senior Environmental Assessment Officer.

5.0 ENVIRONMENTAL MITIGATION REQUIREMENTS

Contractors must follow all mitigation measures identified to protect the environment, including Environmental Sensitive Sites (ESS). Two types of mitigation measures must be followed:

- General Mitigation Measures apply to all Project areas.
- Specific Mitigation Measures apply to individual ESS.

Contractors will need to modify construction activities in accordance with **general mitigation measures (Section 5.1)** and **specific mitigation measures (see detailed maps and specific mitigation in Section 6)**.

5.1 SPECIFIC GENERAL MITIGATION REQUIREMENTS

Construction considerations required for all Project areas are considered general mitigation and are applicable to all construction areas. General mitigation measures have been grouped by (EnvironA summary of general mitigation is found in below.

The environmental protection measures are provided under the following five categories: 1) Management (MM); 2) Project Activity (PA); 3) Project Component (PC); 4) Environment Component (EC); and 5) Environmental Issue (EI), as follows:

(MM) Management environmental protection measures include management, contractual, administrative and other measures that are common to all environmental protection categories and topics.

(PA) Project Activity environmental protection measures include construction activities that are likely to cause direct environmental effects. Project activities are action words or phrases, that that are carried out during construction of the Bipole III Transmission Project such as drilling, clearing, etc..

(PC) Project Component environmental protection measures relate to major components of the Project. The Project is very large and complex consisting of several major components including transmission lines, converter stations and ground electrode facilities, and involves access trails, stream crossings, construction camps, marshalling yards, etc.

(EC) Environmental Component protection measures include important or vulnerable components of the environment that are subject to environmental effects of the Project. Some environmental components are particularly vulnerable to construction of transmission lines, converter stations, ground electrode facilities and other project components and activities, and warrant separate consideration. Example environmental components include agricultural areas, fish habitat, heritage sites and wetlands.

(EI) Environmental Issue and Topic protection measures include important issues and topics identified for the Project. Environmental issues and topics include emergency response, erosion protection/sediment control, hazardous substances, petroleum products and soil contamination.

There is overlap and duplication of mitigation measures amongst the above categories, this allows the user to look up the actions they must perform by different categories.

5.2 GENERAL MITIGATION TABLES

ACCESS ROADS AND TRAILS (PC-1)	5-4
AGRICULTURAL AREAS (EC-1)	5-5
AIRCRAFT USE (EI-1)	5-6
BLASTING AND EXPLODING (PA-1)	5-7
BORROW PITS AND QUARRIES (PC-2)	5-8
BUILT-UP AND POPULATED AREAS (EC-2)	5-9
BURNING (PA-2)	5-10
CLEARING (PA-3)	5-11
CONSTRUCTION CAMPS (PC-3)	5-13
DEMOBILIZING AND CLEANING UP (PA-4)	5-14
DRAINING (PA-5)	5-15
DRILLING (PA-6)	5-16
EMERGENCY RESPONSE (EI-2)	5-17
EROSION PROTECTION AND SEDIMENT CONTROL (EI-3)	5-18
FISH PROTECTION (EC-3)	5-19
GRADING (PA-7)	5-20
GROUNDWATER (EC-4)	5-21
GRUBBING (PA-8)	5-22
HAZARDOUS MATERIALS (EI-4)	5-23
HERITAGE RESOURCES (EC-5)	5-24
MANAGEMENT MEASURES (MM)	5-25

MARSHALLING YARDS (PC-5)..... 5-26
PERMAFROST (EC-6) 5-27
PETROLEUM PRODUCTS (EI-5)..... 5-28
REHABILITATING AND RE-VEGETATION (PA-9) 5-30
RIGHTS-OF-WAY (PC-8).....5-31
SAFETY AND HEALTH (EI-6)..... 5-32
SOIL CONTAMINATION (EI-7)..... 5-33
STREAM CROSSINGS (PC-9)..... 5-34
STRIPPING (PA-10)..... 5-35
TRANSMISSION TOWERS AND CONDUCTORS (PC-10) 5-36
TREATED WOOD (EI-8)..... 5-37
VEHICLE AND EQUIPMENT MAINTENANCE (EI-9)..... 5-38
WASTE MANAGEMENT (EI-10)..... 5-39
WETLANDS (EC-8)..... 5-40
WILDLIFE PROTECTION (EC-9)5-41

Access Roads and Trails (PC-1)

ID	Mitigation
PC-1.01	Access roads and trails no longer required will be decommissioned and rehabilitated in accordance with the Rehabilitation and Vegetation Management Plan.
PC-1.02	Access roads and trails required for future monitoring, inspection or maintenance will be maintained in accordance with the Access Management Plan.
PC-1.03	Access roads and trails will be constructed to a minimum length and width to accommodate the safe movement of construction equipment
PC-1.04	Access roads and trails will be located, constructed, operated and decommissioned in accordance with contract specifications.
PC-1.05	Access roads and trails will be provided with erosion protection and sediment control measures in accordance with the Erosion Protection and Sediment Control Plan.
PC-1.06	All season access roads will not be permitted within established buffer zones and setback distances from waterbodies, wetlands, riparian areas and water bird habitats.
PC-1.07	Approach grades to waterbodies will be minimized to limit disturbance to riparian areas.
PC-1.08	Bypass trails, sensitive sites and buffer areas will be clearly marked prior to clearing, to identify that prescribed selective clearing is to occur as per Map Sheets.
PC-1.09	Contractor will be restricted to established roads and trails, and cleared construction areas in accordance with the Access Management Plan.
PC-1.10	During winter construction, where necessary (i.e. unfrozen wetlands, creeks), equipment will be wide-tracked or equipped with high flotation tires to minimize rutting and limit damage and compaction to surface soils.
PC-1.11	Equipment, machinery and vehicles will only travel on cleared access roads and trails, and will cross waterways at established temporary and permanent crossings.
PC-1.12	Existing access roads, trails or cut lines will be used to the extent possible. Permission to use existing resource roads (ie forestry roads (North/South Jonas roads) will be obtained.
PC-1.13	MCWS Work Permits will be obtained prior to the commencement of the project.
PC-1.14	No chemical melting agents are to be utilized.
PC-1.15	Only water and approved dust suppression products will be used to control dust on access roads where required. Oil or petroleum products will not be used.
PC-1.16	Public use of decommissioned access routes will be controlled through the Access Management Plan.
PC-1.17	Public use of project controlled access roads and trails during construction will be controlled through the Access Management Plans.
PC-1.18	Routing for access roads and trails should follow natural terrain contours to the extent possible and should be minimized adjacent to and approaching waterbodies.
PC-1.19	Surface water runoff will be directed away from disturbed and erosion prone areas but not directly into waterbodies.
PC-1.20	Vegetation control along access roads and trails will be in accordance with Rehabilitation and Vegetation Management Plan.

Agricultural Areas (EC-1)

ID	Mitigation
EC-1.01	All fences and gates will be left in "as-found" condition.
EC-1.02	Any necessary access on agricultural lands will be discussed in advance with the landowner.
EC-1.03	Construction areas and sites will be assessed for compaction and if required will be deep ploughed by the contractor to mitigate any compaction prior to returning them to agricultural use.
EC-1.04	Erosion protection and sediment control measures will be established before construction work commences in agricultural areas where necessary.
EC-1.05	Excess construction materials (i.e. waste, granular fill; clay) will be removed from construction sites and areas located on agricultural lands. Area will be restored to pre-existing conditions.
EC-1.06	Existing access to agricultural lands will be utilized to the extent possible.
EC-1.07	Required travel off existing roads will be minimized and restricted to previously designated and approved routes.
EC-1.08	Vehicular travel on agricultural lands will follow existing roads, trails and paths to the extent possible.

Aircraft Use (EI-1)

ID	Mitigation
EI-1.01	Contractors using aircraft will submit flight plans in advance of flying to the Resident Engineer / Manager during active construction periods.
EI-1.02	Fuel storage, handling and dispensing at aircraft landing areas will conform to provincial legislation and guidelines.

Blasting and Exploding (PA-1)

ID	Mitigation
PA-1.01	A communication protocol will be developed to notify affected parties of blasting operations and conductor splicing. Affected parties may include Manitoba Conservation and Water Stewardship, RCMP, municipalities, landowners, and resource users.
PA-1.02	Blasting will be conducted and monitored in accordance with Fisheries and Oceans Canada Guidelines for the Use of Explosives In or Near Canadian Fisheries Waters
PA-1.03	Blasting will not be permitted around identified caribou calving habitats during calving season. (May 1 to June 30)
PA-1.04	Blasting will not be permitted during timing windows established for sensitive bird breeding, nesting and brood rearing months.
PA-1.05	Explosives will be stored, transported and handled in accordance with federal requirements through the Explosives Act and Transportation of Dangerous Goods Act and provincial regulations stated in The Workplace Safety and Health Act.
PA-1.06	Implode Compression conductor splicing will be minimized to extent possible on weekends and after normal working hours in residential areas
PA-1.07	Quarry blasting operations and conductor splicing will be scheduled to minimize disturbance to wildlife and area residents, and to ensure the safety of workers.
PA-1.08	The Blasting Contractor will be in possession of valid licenses, permits and certificates required for blasting in Manitoba.
PA-1.09	The Blasting Contractor will submit a Blasting Plan to the Construction Supervisor for review and approval prior to commencement of blasting operations.
PA-1.10	Use of ammonium nitrate and fuel oil will not be permitted in or near waterways.
PA-1.11	Warning signals will be used to warn all project personnel and the public of safety hazards associated with blasting.
PA-1.12	Written and/or oral notification will be outlined in the Communication Plan prior to each blasting period.

Borrow Pits and Quarries (PC-2)

ID	Mitigation
PC-2.01	Access to abandoned borrow pits and quarries will be managed in accordance with the Access Management Plan.
PC-2.02	All equipment and structures will be removed from borrow pits prior to abandonment.
PC-2.03	Borrow pits and quarries will be designed, constructed and operated in compliance with provincial legislation and guidelines.
PC-2.04	Borrow pits and quarries will not be located within 150 m of a provincial trunk highway or provincial road unless an effective vegetated berm is provided to shield the area from view.
PC-2.05	Borrow pits and quarries will not be located within established buffer zones and setback distances from identified Environmentally Sensitive Sites.
PC-2.06	Drainage water from borrow pits and quarries will be diverted through vegetated areas, existing drainage ditch(s) or employ a means of sediment control prior to entering a waterbody.
PC-2.07	Erosion protection and sediment controls will be put in place before borrow pit excavation commences, when required as determined by the Environmental Inspector.
PC-2.08	Fuel storage will not be permitted near stockpiles outlined in PC 2.21.
PC-2.09	Garbage, debris or refuse will not be discarded into borrow pits and quarries.
PC-2.10	Only water and approved dust suppression products will be used to control dust on access roads where required. Oil or petroleum products will not be used.
PC-2.11	Organic material, topsoil and subsoil with-in borrow pits and quarries will be stripped and stockpiled for use in future site rehabilitation
PC-2.12	Previously developed borrow sites and quarries will be used to the extent possible before any new sites are developed.
PC-2.13	Signs will be posted at borrow pits and quarries to warn all persons of safety hazards.
PC-2.14	Surface drainage will be redirected away from the borrow pits and quarries before excavation commences.
PC-2.15	Vegetated buffer areas will be left in place when borrow pits are cleared in accordance with provincial guidelines.
PC-2.16	Vegetation control at borrow pits and quarries will be in accordance with the Vegetation Management Plan.
PC-2.17	Vegetation in active Manitoba Hydro permitted borrow pits and quarries will be maintained as per the Rehabilitation/ and Vegetation Management Plan
PC-2.18	Worked out borrow pits and granular quarries will be left with maximum 4:1 (horizontal to vertical) side slopes.

Built-up and Populated Areas (EC-2)

ID	Mitigation
EC-2.01	Construction activities and equipment will be managed to avoid damage and disturbance to adjacent properties, structures and operations.
EC-2.02	Mud, dust and vehicle emissions will be managed in a manner that ensures safe and continuous public activities near construction sites where applicable.
EC-2.03	Noisy construction activities where noise and vibration may cause disturbance and stress in built-up areas will be limited to daylight hours.

Burning (PA-2)

ID	Mitigation
PA-2.01	All occurrences of fire spreading beyond the debris pile will be reported immediately in accordance with work permit conditions
PA-2.02	Any residue or unburned materials remaining post-burn is not to encumber operations or re-vegetating activities.
PA-2.03	Burning of slash on permafrost soils should be avoided. If it is unavoidable, the utilization of other methods such as a metal container that can be removed from site.
PA-2.04	Burning of solid wastes including kitchen wastes and treated wood will not be permitted.
PA-2.05	Burning will be monitored to ensure that fires are contained and subsequent fire hazards are not present. Post season all burn piles will be scanned for hot spots using infrared scanning technology
PA-2.06	Burning will not be carried out within riparian buffer zones or setbacks for stream crossings or waterbodies.
PA-2.07	Burning will only be carried out in accordance with provincial work permits. A Burning Permit is required between April 1st and November 15.
PA-2.08	Debris and wood chip piles located near habitation or highways will only be burned when weather conditions are favourable to ensure the safe dispersal of smoke and in accordance with burning permits where applicable.
PA-2.09	Debris piles scheduled for burning will be piled on mineral soils where possible.
PA-2.10	Firefighting equipment required by legislation, guidelines and contract specifications will be kept on site and maintained in serviceable condition during burning.
PA-2.11	Slash will be piled in a manner that allows for clean, efficient burning of all material and on mineral soils where applicable (ie permafrost).

Clearing (PA-3)

ID	Mitigation
PA-3.01	Riparian Buffers shall be a minimum of 30m and increase in size based on slope of land entering waterway. (See Riparian Buffer Table in CEnvPP) Within these buffers shrub and herbaceous understory vegetation will be maintained along with trees that do not violate Manitoba Hydro Vegetation Clearance Requirements.
PA-3.02	Access to clearing areas will utilize existing roads and trails to the extent possible.
PA-3.03	All clearing and construction equipment is to remain within the bounds of access routes and the Project footprint identified.
PA-3.04	Areas identified for selective clearing (e.g., buffer zones, sensitive sites) will be flagged prior to clearing.
PA-3.05	Chipped or mulched material may be collected for use in construction areas and sediment/erosion control.
PA-3.07	Cleared trees and woody debris will not be pushed into or adjacent to standing timber, wetlands or waterbodies.
PA-3.08	Clearing activities will be carried out in accordance with contract specifications and Annual Harvest Plan
PA-3.09	Clearing and disturbance and equipment use will be limited to the project footprint and associated access routes.
PA-3.10	Clearing will not be permitted within established setbacks for bird nesting and rearing during established timing windows.
PA-3.11	Clearing within environmentally sensitive areas, not designated for organic removal will be carried out in a manner that minimizes disturbance to existing organic soil layer.
PA-3.12	Construction vehicles where possible will be wide-tracked or equipped with high floatation tires to minimize rutting and limit damage and compaction to surface soils.
PA-3.13	Construction vehicles, machinery and heavy equipment will not be permitted in designated machine-free zones except at designated crossings.
PA-3.14	Danger trees will be flagged/marked for removal using methods that do not damage soils and adjacent vegetation.
PA-3.15	Environmentally sensitive sites, along the right-of-way will be clearly identified by signage.
PA-3.16	In locations where grubbing and vegetation stripping is not required, existing low growth vegetation such as grasses, forbs and shrubs will be maintained to the extent possible; disturbance to roots and adjacent soils will be minimized.
PA-3.17	Machine clearing will remove trees and brush with minimal disturbance to existing organic soil layer using only "V" or "K-G" type blades, feller-bunchers and other means approved by the Construction Supervisor.
PA-3.18	Property limits, right-of-way boundaries, buffers and sensitive areas (where applicable) will be clearly marked with stakes and/or flagging tape prior to clearing.
PA-3.19	Selective clearing will be carried out in erosion prone areas. Low ground disturbance methods will be employed to minimize soil disturbance.
PA-3.20	Slash piles will be placed at least 15 m from forest stands.
PA-3.21	Slash piles will not be placed on the surface of frozen waterbodies and will not be located within established setbacks from waterbodies or within the ordinary high water mark.
PA-3.22	The Construction Supervisor will issue a stop work order if extreme wet weather or insufficient frost conditions results in soil damage from rutting, and soil erosion is resulting in sedimentation of adjacent waterbodies.
PA-3.23	Trees containing active nests and areas where active animal dens or burrows are encountered will be left undisturbed until unoccupied.
PA-3.24	Trees will be felled toward the middle of rights-of-way or cleared area to avoid damage to standing trees. Trees will not be felled into waterbodies.
PA-3.25	Vegetation will be removed by mechanical means except where other selective clearing methods are stipulated at identified Environmentally Sensitive Sites.

Clearing (PA-3)

PA-3.26	Where practical, merchantable timber will be salvaged and brought to market. As per Annual Harvest Plan, timber that is not salvaged will be piled and burned during frozen conditions in accordance with timing windows.
---------	---

Construction Camps (PC-3)

ID	Mitigation
PC-3.01	A food handling permit will be obtained from the local Public Health Inspector prior to the operation of kitchens.
PC-3.02	Bear-proof garbage containers and/or electric fencing will be used to store food waste in northern and rural areas.
PC-3.03	Construction camp sites will be kept tidy at all times. Waste materials including litter will be collected for disposal.
PC-3.04	Construction camps will be located based on criteria that consider soils, topography, land form type, permafrost, wildlife habitat and other environmental factors.
PC-3.05	Crown land permits will be obtained for construction camps as required.
PC-3.06	Erosion protection, sediment control and drainage management measures will be put in place prior to construction where applicable.
PC-3.07	Feeding or harassment of any wildlife is prohibited.
PC-3.08	Firebreaks will be constructed around camp locations where there is a risk of fire.
PC-3.09	Hunting and uncontrolled Fishing will not be permitted within the project footprint.
PC-3.10	Liquid and solid sewage wastes held in tanks will be removed in accordance with the solid waste management plan by a licensed contractor and taken to licensed or approved disposal areas.
PC-3.11	Problem wildlife will be reported immediately to the nearest Manitoba Conservation and Water Stewardship office.
PC-3.12	Propane tanks for camp use will be stored in dedicated, secure areas at a safe distance from kitchen and sleeping quarters in accordance with provincial legislation and national codes.
PC-3.13	Sewage and grey water holding tanks will be sited in accordance with provincial legislation, and federal and provincial guidelines, and a minimum of 100 m from the ordinary high water mark of any waterbody.
PC-3.14	Sewage and grey water will be collected in holding tanks, sullage pits, chemical toilets or pit privies.
PC-3.15	Spill control and clean-up equipment and materials will be provided for construction camps in accordance with the Emergency Preparedness and Response Plan.
PC-3.16	The Environmental Inspector will inspect rehabilitated construction camps in accordance with the site Reclamation Plan to assess the success of re-vegetation and to determine if additional rehabilitation is required.
PC-3.17	Vegetation control at construction camps will be in accordance with the Rehabilitation and Vegetation Management Plan
PC-3.18	Waste and recyclables will be removed in accordance with the Waste and Recycling Management Plan to a licensed or approved waste disposal site and/or recycling facility.
PC-3.19	Food, greases and wastes will be stored in sealed, air-tight containers and managed as per PA-3.2

Demobilizing and Cleaning Up (PA-4)

ID	Mitigation
PA-4.01	Buildings, structures, trailers, equipment, utilities, waste materials, etc will be removed from construction areas and sites when work is completed.
PA-4.02	Construction access roads/trails that are no longer required will be decommissioned and rehabilitated to prevent access.
PA-4.03	Construction areas and sites will be rehabilitated and re-vegetated as appropriate immediately after demobilizing and clean-up.
PA-4.04	Construction areas no longer required will be demobilized and rehabilitated in accordance with Rehabilitation and Vegetation Management Plan and/or provincial regulations (ie quarries and borrow sites)
PA-4.05	Petroleum product and other hazardous substances storage areas will be cleaned up, assessed and, if necessary, remediated in accordance with provincial guidelines and Manitoba Hydro guidelines.
PA-4.06	Stream crossings and drainages will be left free of obstructions so as not to impede natural runoff.

Draining (PA-5)

ID	Mitigation
PA-5.01	Blockage of natural drainage patterns by construction activities will be avoided.
PA-5.02	Culverts will be installed and maintained in accordance with Manitoba Stream Crossing Guidelines and DFO Operation Statement on Culvert Maintenance.
PA-5.03	Dewatering discharges will be directed into vegetated areas, existing drainage ditch(s) or a means of sediment control at such a rate and will have adequate flow dissipation at the outlet to ensure it does not cause erosion at the discharge point or at any point downstream
PA-5.04	Drainage water from construction areas will be diverted through vegetated areas, existing drainage ditch(s) or a means of sediment control prior to entering a waterbody.
PA-5.05	Erosion protection and sediment control will be provided in accordance with the Erosion Protection and Sediment Control Plan.
PA-5.06	Existing, natural drainage patterns and flows will be maintained to the extent possible.
PA-5.07	No debris or slash is allowed to be placed in drainage channels/ditches

Drilling (PA-6)

ID	Mitigation
PA-6.01	Abandoned drill holes will be sealed with bentonite or other effective sealers to prevent interconnection and cross-contamination of ground and surface waters.
PA-6.02	Drilling activities in northern Manitoba will be carried out under frozen ground conditions to minimize damage to surface vegetation, soils and permafrost to the extent possible.
PA-6.03	Drilling equipment and machinery will not be serviced within 100 m of waterbodies or riparian areas.
PA-6.04	Drilling fluids and waste materials will not be allowed to drain into waterbodies, riparian areas or wetlands.
PA-6.05	Drilling in environmentally sensitive sites, features and areas will not be permitted unless approved in advance by Environmental Inspector and mitigation measures are implemented.
PA-6.06	Drilling will not be permitted during established timing windows for caribou calving areas.
PA-6.07	Drilling will not be permitted within established buffer zones and setback distances from waterbodies.
PA-6.08	Spill control and clean-up equipment will be provided at all drilling locations.
PA-6.09	The drilling contractor will ensure that equipment and materials are available on site for sealing drill holes.
PA-6.10	The drilling contractor will inspect drilling equipment and machinery for fuel and oil leaks prior to arrival at the project site, and will inspect for fuel and oil leaks and spills regularly.
PA-6.11	Where there is potential for mixing of surface and ground water, precautions will be taken to prevent the interconnection of these waters.

Emergency Response (EI-2)

ID	Mitigation
EI-2.01	All fires will be reported in accordance with fire reporting procedures in the Emergency Preparedness and Response Plan.
EI-2.02	All spills at construction sites will be reported in accordance with provincial legislation and guidelines , and Manitoba Hydro Guidelines.
EI-2.03	All vehicles hauling petroleum products will carry spill containment and clean-up equipment.
EI-2.04	Clean-up and the disposal of contaminated materials will be managed in accordance with provincial guidelines and Manitoba Hydro guidelines.
EI-2.05	Emergency Preparedness and Response Plans and procedures will be communicated to all project staff and a copy will be made available at the project site.
EI-2.06	Emergency spill response and clean-up materials and equipment will be available at construction sites, marshalling yards, fuel storage facilities and standby locations.
EI-2.07	Fire extinguishers will be mounted on buildings at locations where they will be most readily accessible. Safety Officers will conduct annual inspections of fire extinguishers.
EI-2.08	Orientation for Contractor and Manitoba Hydro employees working in construction areas will include emergency response awareness.
EI-2.09	Post audit assessments will be carried out for all major spills and fires reported to ensure that procedures are followed and plans remain effective.
EI-2.10	Project emergency response and evacuation procedures in the Emergency Preparedness and Response Plan will be adhered to in the event of forest fires.
EI-2.11	Reasonable precautions will be taken to prevent fuel, lubricant, fluids or other products from being spilled during equipment operation, fuelling and servicing.
EI-2.12	Spill response and clean-up equipment will be capable of containing and recovering the largest release possible and be suitable for the site location.
EI-2.13	Temporary construction camps will have a designated fire marshall in accordance with the Emergency Preparedness and Response Plan.
EI-2.14	The Emergency Preparedness and Response Plan will be prepared by the Contractor, approved by the Construction Supervisor/Site Manager prior to construction and updated annually.
EI-2.15	The Manitoba Hydro hazardous materials incident report form will be completed when reporting a spill.
EI-2.16	The on-site Emergency Spill Response Coordinator will be notified of hazardous substance releases immediately in accordance with the Emergency Preparedness and Response Plan.

Erosion Protection and Sediment Control (EI-3)

ID	Mitigation
EI-3.01	Accumulated sediment will be removed from silt fences and other barriers in accordance with the Erosion Protection and Sediment Control Plan to ensure proper functioning.
EI-3.02	Construction activities will be suspended during extreme wet weather events where erosion protection and sediment control measures are compromised.
EI-3.03	Contractor specific Erosion Protection and Sediment Control Plans will be prepared by the Contractor, accepted by Manitoba Hydro prior to construction and updated annually.
EI-3.04	Erosion protection and sediment control installations will only be removed after disturbed areas are protected and sediments are disposed of in accordance with Erosion Protection and Sediment Control Plan.
EI-3.05	Erosion protection and sediment control measures will be left in place and maintained until either natural vegetation or permanent measures are established.
EI-3.06	Erosion protection and sediment control measures will be put in place prior to commencement of construction activities and will remain intact for the duration of the project.
EI-3.07	Orientation for Contractor and Manitoba Hydro employees working in construction areas will include erosion protection and sediment control techniques and procedures.
EI-3.08	The Contractor will be responsible for developing, implementing and maintaining Erosion Protection and Sediment Control Plans and procedures be put in place prior to commencement of construction activities.
EI-3.09	The Contractor will be responsible for modifying erosion protection and sediment control installations to ensure continued effectiveness.
EI-3.10	The Contractor will communicate erosion protection and sediment control information to all project staff and a copy will be made available at the project site.
EI-3.11	The Environmental Inspector will make regular inspections of erosion protection and sediment control measures to confirm implementation and continued effectiveness.

Fish Protection (EC-3)

ID	Mitigation
EC-3.01	Construction activities will not be carried out within established buffer zones and setback distances from waterbodies, wetlands and riparian areas without prior written notification of Department of Fisheries and Oceans.
EC-3.02	Disturbances to waterbodies, shorelines, riparian areas, etc. will be rehabilitated immediately upon completion of construction activities.
EC-3.03	Erosion protection and sediment control measures will be put in place at all project locations where surface drainage is likely to flow into fish bearing waters.
EC-3.04	Fish and fish habitat will be protected in accordance with federal legislation and federal and provincial guidelines.
EC-3.05	MCWS and Fisheries and Oceans Canada (DFO) will be notified if beaver dams must be cleared along rights-of-ways and along access roads and trails. Clearing of dams will be carried out in accordance of the Fisheries and Oceans Canada Operational Statement
EC-3.06	Project personnel will be prohibited from fishing at project locations or along rights-of-way

Grading (PA-7)

ID	Mitigation
PA-7.01	A thick gravel layer (1.2 m) or compacted snow layer (0.6 m) will be used in temporary workspaces or marshalling yards located in permafrost areas where required to prevent damage to surface materials.
PA-7.02	Grading for gravel pads for construction areas and access roads will be limited to areas where it is needed for the safe and efficient operation of vehicles, machinery and construction equipment.
PA-7.03	Grading for site rehabilitation and restoration will be in accordance with Rehabilitation and Vegetation Management Plan.
PA-7.04	Grading will not be permitted within established buffer zones and setback distances from waterbodies.
PA-7.05	Grading will only be permitted within rights-of-ways and construction areas.
PA-7.06	Gravel pads will be graded so the surface runoff is directed away from waterbodies, riparian areas and wetlands.
PA-7.07	Required erosion protection and sediment control measures will be put in place prior to grading in accordance with the Erosion Protection and Sediment Control Plan.

Groundwater (EC-4)

ID	Mitigation
EC-4.01	Potable water samples will be collected every two weeks and submitted for analysis according to provincial sampling and analysis protocol.
EC-4.02	Well location will be marked with flagging tape prior to construction.
EC-4.03	Where there is potential for mixing of surface and ground water, precautions will be taken to prevent the interconnection of these waters.

Grubbing (PA-8)

ID	Mitigation
PA-8.01	Construction areas containing soil with high silt content, artesian springs or areas of previous erosion will receive special erosion protection and sediment control techniques.
PA-8.02	Construction areas requiring extensive grubbing will be stabilized as soon as possible to minimize erosion.
PA-8.03	Grubbing will be halted during heavy precipitation events when working in areas of finely textured soils.
PA-8.04	Grubbing will not be permitted within 2 m of standing timber to prevent damage to root systems and to limit the occurrence of blow down.
PA-8.05	Grubbing will not be permitted within established buffer zones and setback distances from waterbodies.
PA-8.06	Stockpiled materials from grubbing will not block natural drainage patterns.
PA-8.07	Unless required for the work, the extent of grubbing will be minimized to the extent possible.
PA-8.08	When not under frozen conditions, erosion protection and sediment control measures will be put in place prior to grubbing in accordance with the Erosion Protection and Sediment Control Plan.
PA-8.09	Windrows of grubbed materials will be piled at least 15 m from standing timber.

Hazardous Materials (EI-4)

ID	Mitigation
EI-4.01	A Contractor specific Hazardous Substances Management Plan will be prepared by the Contractor, approved by the Construction Supervisor/Site Manager prior to construction and updated annually.
EI-4.02	Access to hazardous materials storage areas will be restricted to authorized and trained Contractor and Manitoba Hydro personnel.
EI-4.03	An inventory of WHMIS controlled substances will be prepared by the Contractor and maintained at each project site and updated as required by provincial legislation.
EI-4.04	Bulk waste oil will be stored in approved aboveground tanks provided with secondary containment in accordance with provincial legislation.
EI-4.05	Containers of hazardous substances stored outside will be labelled, weatherproof, placed on spill containment pallets and covered by a weatherproof tarp.
EI-4.06	Contractor personnel will be trained and certified in the handling of hazardous materials including emergency response procedures in accordance with provincial legislation.
EI-4.07	Contractor personnel will receive WHMIS training in accordance with provincial legislation.
EI-4.08	Controlled substances will be labelled in accordance with WHMIS requirements, required documentation will be displayed and current Materials Safety Data Sheets will be available at each project site in accordance with the Hazardous Substances Management Plan
EI-4.09	Empty hazardous waste containers will be removed to a licensed or approved disposal site.
EI-4.10	Hazardous materials storage sites will be secured, and signs will be posted that include hazard warnings, contacts in case of a release, access restrictions and under whose authority the access is restricted.
EI-4.11	Hazardous materials will be adequately contained and will be protected from wind and rain to prevent entry of fine particles into streams through runoff of dust deposition.
EI-4.12	Hazardous substance and WHMIS inventories will be completed prior to construction. Inventories will be updated in accordance with regulatory requirements and Manitoba Hydro policies.
EI-4.13	Hazardous substances management procedures will be communicated to all project staff and a copy will be made available at the project site.
EI-4.14	Hazardous substances storage areas including coke materials for ground electrode facilities will be located a minimum of 100 m from the ordinary high water mark of a waterway and above the 100-year flood level.
EI-4.15	Hazardous substances will be transported, stored and handled according to the procedures prescribed by provincial legislation and at a minimum follow Manitoba Hydro policies.
EI-4.16	Hazardous waste substances will be segregated and stored by type.
EI-4.17	Indoor storage of flammable and combustible substances will be in fire resistant and vented enclosed storage area or building in accordance with national codes and standards.
EI-4.18	Manitoba Hydro will approve all hazardous materials that are used on the project prior to their arrival on-site.
EI-4.19	Non-hazardous products will be used in place of hazardous substances to the extent possible.
EI-4.20	Orientation for Contractor and Manitoba Hydro employees working in construction areas will include hazardous substance awareness.
EI-4.21	Pesticide storage will be in accordance with provincial legislation and Manitoba Hydro guidelines.
EI-4.22	The Contractor will be responsible for the safe use, handling, storage and disposal of hazardous substances including waste as well as procedures for emergency conditions in accordance with provincial and federal legislation and standards.
EI-4.23	The Contractor will monitor containers of hazardous substance containers regularly for leaks and to ensure that labels are displayed.
EI-4.24	The Environmental Inspector will make routine inspections of hazardous substance storage sites to ensure that environmental protection measures are implemented and effective.
EI-4.25	Waste oil will be transported by licensed carriers to licensed or approved waste oil recycling facilities.
EI-4.26	Wet batteries will be stored and transported to licensed or approved waste recycling facilities.

Heritage Resources (EC-5)

ID	Mitigation
EC-5.01	All archaeological finds discovered during site preparation and construction will be left in their original position until the Project Archaeologist is contacted and provides instruction.
EC-5.02	Construction activities will not be carried out within established buffer zones for heritage resources except as approved by Project Archaeologist.
EC-5.03	Environmental protection measures for heritage resources will be reviewed with the Contractor and employees prior to commencement of any construction activities.
EC-5.04	Orientation for project staff working in construction areas will include heritage resource awareness and training including the nature of heritage resources and the management of any resources encountered.
EC-5.05	Orientation information will include typical heritage resource materials and reporting procedures.
EC-5.06	The Contractor will report heritage resource materials immediately to the Construction Supervisor will cease construction activities in the immediate vicinity until the Project Archaeologist is contacted and prescribes instruction.
EC-5.07	The Culture and Heritage Resource Protection Plan will be adhered to during Preconstruction and construction activities.
EC-5.08	The Environmental Inspector will inspect borrow pits and other excavations regularly for the presence of heritage resource materials.

Management Measures (MM)

ID	Mitigation
MM-01	All licenses, permits, contracts, project specifications, guidelines and other applicable documents will be in the possession of both the Contractor and Manitoba Hydro prior to commencement of work.
MM-02	All project participants will ensure that project activities are carried out in compliance with applicable legislation, guidelines contractual obligations and environmental protection plan provisions.
MM-03	Environmental concerns will be identified and discussed at planning meetings on an as required basis.
MM-04	Manitoba Hydro will contact First Nation and Aboriginal community representatives prior to project start-up.
MM-05	Manitoba Hydro will contact local municipal authorities prior to project start-up.
MM-06	Manitoba Hydro will contact local resource users, lodge operators, outfitters and recreational resource users and associations to the extent feasible and practical prior to project start-up.
MM-07	Manitoba Hydro will contact Manitoba Conservation and Forest Management Licence Holders prior to clearing regarding timber use opportunities.
MM-08	Manitoba Hydro will meet the Contractor at the beginning of each new contract to review environmental protection requirements including mitigation measures, inspections and reporting.
MM-09	Manitoba Hydro will notify trappers in advance of clearing and construction schedules in their trapline areas.
MM-10	Manitoba Hydro will provide the contractor with a stakeholders list with names, organizations and contact information for the purpose of contacting stakeholders as necessary.
MM-11	Project construction update meetings will be held weekly for the ongoing review of environmental and safety issues.
MM-12	Relevant documents including licenses, permits, approvals, legislation, guidelines, environmental protection plans, orthophotos maps, etc will be made available to all project participants.
MM-13	Response to enforcement actions by regulatory authorities will be in accordance with Manitoba Hydro policy P602.
MM-14	The Contractor will obtain all licenses, permits, contracts and approvals other than those that are Manitoba Hydro's responsibility prior to project start-up.
MM-15	The Contractor will review terms and conditions of all authorizations, contract specifications, agreements, etc prior to project start-up and will discuss any questions or concerns with Manitoba Hydro.

Marshalling Yards (PC-5)

ID	Mitigation
PC-5.01	Contractor employees responsible for receipt and distribution of hazardous substances will be trained in handling and transportation of dangerous goods, and WHMIS.
PC-5.02	Emergency Preparedness and Response Plan and procedures for marshalling yards will be developed.
PC-5.03	Erosion protection, sediment control and drainage management measures will be put in place prior to construction.
PC-5.04	Fire breaks will be established around marshalling yards in areas where there is a risk of fire.
PC-5.05	Garbage and debris will be stored in approved containers, sorted for recycling and disposed of at a licensed or approved waste disposal site.
PC-5.06	Hazardous substances entering and leaving the marshalling yards will be inventoried and accounted for.
PC-5.07	Hazardous substances will be stored in accordance with provincial legislation, and provincial and national codes and standards.
PC-5.08	Marshalling yards will be located based on criteria that consider soils, topography, land form type, permafrost, wildlife habitat and other environmental factors.
PC-5.09	Marshalling yards will be located in existing clearings or natural openings.
PC-5.10	Marshalling yards will be located, constructed, operated and decommissioned in accordance with contract specifications.
PC-5.11	Once marshalling yards are no longer required, structures, equipment, materials, fences, etc. will be dismantled and moved to storage or a new location.
PC-5.12	Organic material, topsoil and sub-soil stripped during site preparation will be stockpiled separately for later use in site rehabilitation.
PC-5.13	Petroleum products will only be stored, handled and dispensed in designated areas within marshalling yards in accordance with provincial legislation and guidelines.
PC-5.14	Spill control and clean-up equipment to be located at designated areas within marshalling yards.
PC-5.15	Staging and work storage areas no longer required will be decommissioned and rehabilitated in accordance with the Rehabilitation and Vegetation Management Plan.
PC-5.16	Vegetation control at marshalling yards will be in accordance with Rehabilitation and Vegetation Management Plan.
PC-5.17	Vehicle, machinery and equipment maintenance and repairs will be carried out in designated areas within marshalling yards.
PC-5.18	Waste hazardous substances, fuel containers and other materials will be stored in approved containers and transported to licensed or approved waste disposal facilities by a licensed carrier.
PC-5.19	Welding mats will be used to minimize the risk of fire.

Permafrost (EC-6)

ID	Mitigation
EC-6.01	Alterations to natural drainage patterns by rutting and scouring of surface materials in permafrost areas will be avoided to the extent possible.
EC-6.02	Construction activities in northern Manitoba will normally occur under frozen ground conditions during established timing windows to minimize disturbance and rutting.
EC-6.03	Construction projects in permafrost areas of northern Manitoba will employ insulation techniques to protect frozen ground from melting.
EC-6.04	Damage to permafrost areas at watercourse crossings will be minimized by conducting work under frozen conditions.
EC-6.05	Disturbance to ground cover vegetation and organic soils in permafrost areas will be minimized.
EC-6.06	Environmental protection measures for permafrost areas in northern Manitoba will be reviewed with the Contractor and employees prior to commencement of any construction activities.
EC-6.07	Excavations of permafrost areas in northern Manitoba will be minimized to the extent possible.
EC-6.08	Permafrost areas in northern Manitoba will be identified and mapped in advance of project construction activities.
EC-6.09	The top layer of vegetation and organic materials will be retained as an insulating layer in permafrost areas.

Petroleum Products (EI-5)

ID	Mitigation
EI-5.01	Aboveground tanks will be equipped with overfill protection and spill containment consisting of perimeter dykes or secondary containment in the tank design.
EI-5.02	All aboveground petroleum product tanks with a capacity greater than 5,000 L will be registered with Manitoba Conservation and Water Stewardship and have a valid operating permit.
EI-5.03	Construction, installation or removal of petroleum product storage tank systems will only occur under the supervision of a registered licensed petroleum technician.
EI-5.04	Containment measures, such as secondary containment (i.e., berms) will be used at all locations where stationary oil-filled equipment is used.
EI-5.05	Contractors will inspect all mobile and stationary equipment using petroleum products on a regular basis to ensure that measures are taken immediately to stop any leakage discovered.
EI-5.06	Fuelling of equipment or portable storage tanks will be a minimum of 100 m from the ordinary high water mark of any waterbody.
EI-5.07	Fuelling operations require the operator to be visually observing the process 100% of the time.
EI-5.08	If dykes are used, the containment areas will be dewatered after rainfall events and the containment water disposed of as specified in contract specifications.
EI-5.09	Once petroleum product storage areas are no longer required, a Phase I and II Environmental Site Assessment will be carried out to determine if remediation is required in accordance with national standards.
EI-5.10	Only approved aboveground petroleum storage tanks will be used during the construction phase of the project. No underground tanks will be permitted.
EI-5.11	Orientation for Contractor and Manitoba Hydro employees working in construction areas will include petroleum product storage and handling awareness.
EI-5.12	Petroleum product dispensing systems will be secured and locked when not in use by authorized personnel.
EI-5.13	Petroleum product inventories will be taken weekly by the owner/operator on all aboveground tanks greater than 5,000 L and retained for inspection by Manitoba Hydro or Manitoba Conservation upon request.
EI-5.14	Petroleum product storage containers in excess of 230 L will be located on level ground and will incorporate secondary containment with a capacity of 110% of the largest container volume.
EI-5.15	Petroleum product storage sites and mobile transportation units will be equipped with fire suppressant equipment and products.
EI-5.16	Petroleum product storage tanks will be protected from vehicle collisions by concrete filled bollards.
EI-5.17	Petroleum product storage will be located a minimum of 100 m from the ordinary high water mark of waterbodies, riparian areas or wetlands.
EI-5.18	Petroleum products stored outside will be in waterproof and labelled containers, placed on spill containment pallets.
EI-5.19	Petroleum products will be transported and handled according to the procedures prescribed by provincial legislation.
EI-5.20	Petroleum products will display required signage, placards and labelling, and will be stored and handled in accordance with provincial legislation.
EI-5.21	Petroleum products will only be stored and handled within designated areas at construction camps and marshalling yards.
EI-5.22	Portable petroleum product storage containers will be placed on spill trays with a capacity of 110% of the largest container when not in use.
EI-5.23	Slip tanks and barrels will be securely fastened to the vehicle during transport and fuelling operations.
EI-5.24	Spill control and clean-up equipment and materials will be available at all petroleum product storage and dispensing locations.
EI-5.25	Spill trays will remain impervious at very low temperatures (-45 °C) and have accumulated precipitation removed regularly.
EI-5.26	The Contractor will be responsible for the safe use, handling, storage and disposal of petroleum products including waste as well as procedures for emergency conditions in accordance with provincial and federal

Petroleum Products (EI-5)

	legislation and standards.
EI-5.27	The Contractor will inspect all petroleum product storage tanks and containers regularly for leaks, and product inventories will be recorded and retained for inspection by Manitoba Hydro and Manitoba Conservation and Water Stewardship.
EI-5.28	There will be no ignition sources in and adjacent to petroleum product storage areas.
EI-5.29	Transfer of petroleum products between storage areas and work sites not exceed daily requirements and will be in accordance with provincial legislation and guidelines.
EI-5.30	Used petroleum products (including empty containers) will be collected and transported to a licensed oil recycling facility in approved storage containers.
EI-5.31	Vehicles hauling petroleum products will carry equipment and materials for emergency spill containment and clean-up.
EI-5.32	Warning signs will be posted in visible locations around petroleum product storage areas. Signs will indicate hazard warning, contact in case of a spill, access restrictions and authority.

Rehabilitating and Re-vegetation (PA-9)

ID	Mitigation
PA-9.01	Construction areas no longer required will be re-contoured, stabilized, re-vegetated and restored to near natural conditions in accordance with Rehabilitation and Vegetation Management Plan
PA-9.02	Natural re-vegetation will be allowed to occur although active rehabilitation programs may be required at specific sites where erosion warrants seeding or planting
PA-9.03	Organic material, topsoil and subsoil stripped from construction areas will be stockpiled and protected to be used for future site rehabilitation.
PA-9.04	Rehabilitation of construction areas will incorporate erosion protection and sediment control measures in accordance with the Erosion and Sediment Control Plan as required.
PA-9.05	Rehabilitation Plans will include objectives for restoration of natural conditions, erosion protection, sediment control, non-native and invasive plant species management, wildlife habitat restoration and restoration of aesthetic values as required.
PA-9.06	Where appropriate, regional native grass mixtures will be used to assist re-vegetation of disturbed areas to control erosion or prevent invasion of non-native species. The mixtures will not contain non-native or invasive species.

Rights-of-Way (PC-8)

ID	Mitigation
PC-8.01	Access to transmission line rights-of-way for clearing and construction will utilize existing roads and trails to the extent possible.
PC-8.02	Access to transmission line rights-of-way will be closed, signed and/or controlled in accordance with an Access Management Plan.
PC-8.03	Additional clearing outside established rights-of-way will be approved by the Construction Supervisor/Site Manager prior to clearing and may require an amendment to contract specifications.
PC-8.04	Clearing and disturbance will be limited to defined rights-of-way and associated access routes to the extent possible.
PC-8.05	Clearing of rights-of-way will occur under frozen or dry ground conditions during established timing windows to minimize rutting and erosion where applicable.
PC-8.06	Construction vehicles will be wide-tracked or equipped with high floatation tires to minimize rutting and limit damage and compaction to surface soils.
PC-8.07	Disturbed areas along transmission line rights-of-way will be rehabilitated in accordance with site Rehabilitation and Vegetation Management Plan.
PC-8.08	Environmentally sensitive sites, features and areas will be identified and mapped prior to clearing.
PC-8.09	In situations where the ROW doesn't have completely frozen or have dry ground conditions alternate products such as construction mats will be used.

Safety and Health (EI-6)

ID	Mitigation
EI-6.01	Orientation for Contractor and Manitoba Hydro employees working in construction areas will include safety and health awareness.
EI-6.02	Safety and health information will be posted at each project location and made available to all project personnel.
EI-6.03	Workplace safety and health committees will be established and safety meetings will be held as required by provincial legislation and Manitoba Hydro guidelines at all project locations.

Soil Contamination (EI-7)

ID	Mitigation
EI-7.01	A closure report will be prepared for completed remediation projects in accordance with provincial and Manitoba Hydro guidelines.
EI-7.02	A Remediation Plan will be prepared by the Contractor for sites contaminated by project activities and will remediate soils according to provincial standards.
EI-7.03	All spills and releases reported will be responded to in accordance with provincial legislation and guidelines and Manitoba Hydro guidelines.
EI-7.04	Any contaminated soil treatment areas must be designed and constructed to contain surface runoff and prevent leaching to soil and groundwater.
EI-7.05	Contractor personnel will take all reasonable steps to prevent soil, groundwater and surface water contamination.
EI-7.06	If contamination is suspected or evident, a Phase II Environmental Site Assessment will be carried out on previously used construction sites following Manitoba Hydro procedures.
EI-7.07	If laboratory results show that the soil is contaminated the soil must be treated on-site or transported to an approved landfill or land farm for remediation in accordance with a Remediation Plan.
EI-7.08	If laboratory results show that the soil is not contaminated then the soils may be used in accordance with contact specifications.
EI-7.09	Remediation Plans will be prepared by the Contractor and approved by the Construction Supervisor/Site Manager prior to implementation if remediation of contaminated soils is determined to be required.
EI-7.10	The Contractor will assess previously used construction sites for potential contamination following Canadian Standards Association Environmental Site Assessment (CSA Z768- 01 and Z769-00) procedures.
EI-7.11	The Contractor will carry out a CSA Phase II Environmental Site Assessment (CSA Z769-00) at abandoned construction camps, marshalling yards, petroleum product storage and dispensing areas and hazardous substance storage areas if contamination is suspected
EI-7.12	The Environmental Inspector will inspect contaminated site assessment and remediation work regularly to ensure that environmental protection measures are implemented and effective.

Stream Crossings (PC-9)

ID	Mitigation
PC-9.01	Access road crossings will be at right angles to waterbodies to the extent possible.
PC-9.02	Construction of temporary crossings will follow the Fisheries and Oceans Canada Manitoba Operational Statement for Temporary Stream Crossings.
PC-9.03	Construction of transmission line stream crossings will follow the Fisheries and Oceans Canada Manitoba Operational Statement for Overhead Line Construction.
PC-9.04	Where applicable, the Fisheries and Oceans Canada Manitoba Operational Statement for Isolated or Dry Open Cut Stream Crossings and/or High-pressure Directional Drilling will be adhered to.

Stripping (PA-10)

ID	Mitigation
PA-10.01	Construction areas containing soil with high silt content, artesian springs or areas of previous erosion will receive special erosion protection and sediment control techniques.
PA-10.02	Erosion protection and sediment control measures will put be in place prior to stripping in accordance with the Erosion and Sediment Control Plan as required.
PA-10.03	In areas of known salinity, excavated or stripped soil will be stored on liners or in designated areas were possible.
PA-10.04	Mineral topsoils and surficial organic materials should be stripped separately from subsoils, segregated, and stockpiled for later use in backfilling, contouring and rehabilitation. Soils should be replaced in the reverse order to which they were removed.
PA-10.05	Stockpiled materials from stripping will not block natural drainage patterns.
PA-10.06	Stripping in northern Manitoba will normally be carried out under frozen ground conditions during established timing windows to minimize rutting and erosion.
PA-10.07	Stripping will not be permitted within established buffer zones and setback distances from waterbodies except where approved in work permits, authorizations or contract specifications.
PA-10.08	The Contractor will stabilize construction areas requiring extensive stripping as soon as possible to minimize erosion.

Transmission Towers and Conductors (PC-10)

ID	Mitigation
PC-10.01	Areas where soil was disturbed will be stabilized and re-vegetated with low growth vegetation as soon as practical.
PC-10.02	During tower foundation excavation the duff layer and A horizon soils shall be stripped and stored separately from other soils. When back filling, these soils are to be replaced as the surface soils to encourage site re-vegetation.
PC-10.03	Excavations required for tower installations will be restricted to the minimum required footprint.
PC-10.04	The Construction Supervisor will issue a stop work order if extreme wet weather conditions result in soil damage from rutting and erosion is resulting in sedimentation of adjacent waterbodies.

Treated Wood (EI-8)

ID	Mitigation
EC-8.01	Salvage and disposal of treated wood products will be in accordance with Manitoba Hydro guidelines.
EC-8.02	Small quantities of surplus or unwanted treated wood products may be disposed of as domestic waste products at licensed or approved waste disposal sites.
EC-8.03	Treated wood products will not be used indoors and will not be burned.
EC-8.04	Treated wood will be delivered to project locations or construction sites on an as required basis to reduce storage time in the field.

Vehicle and Equipment Maintenance (EI-9)

ID	Mitigation
EI-9.01	An Emergency Preparedness and Response Plan and spill control and clean-up equipment will be provided at all designated vehicle, equipment and machinery maintenance areas.
EI-9.02	Emergency vehicle, equipment and machinery maintenance repairs will contain waste fluids and will use drip trays and tarps.
EI-9.03	Unnecessary idling of vehicles, equipment and machinery will be avoided to the extent practical.
EI-9.04	Vehicle, equipment and machinery maintenance and repairs will be carried out in designated areas located at least 100 m from the ordinary high water mark of a waterbody, riparian area or wetland.
EI-9.05	Vehicle, equipment and machinery operators will perform a daily inspection for fuel, oil and fluid leaks and will immediately shutdown and repair any leaks found. All machinery working near watercourses will be kept clean and free of leaks.
EI-9.06	Vehicles transporting dangerous goods or hazardous products will display required placards and labelling in accordance with provincial legislation and Manitoba Hydro guidelines.
EI-9.07	Vehicles, equipment and machinery must arrive on site in clean condition free of fluid leaks and weed seeds.
EI-9.08	Vehicles, equipment and machinery that carry fuel, hydraulic oil and other petroleum products will also carry spill control and clean-up equipment and materials.

Waste Management (EI-10)

ID	Mitigation
EI-10.01	A Contract specific Waste and Recycling Management Plan will be prepared by the Contractor, reviewed by the Construction Supervisor and Environmental Specialist prior to construction and updated annually.
EI-10.02	Bear-proof waste containers and/or electric fencing will be used in northern, remote and rural project locations.
EI-10.03	Construction sites will be kept tidy at all times and bins will be provided wherever solid wastes are generated.
EI-10.04	Indiscriminate burning, dumping, littering or abandonment will not be permitted.
EI-10.05	Kitchen wastes will be stored in closed containers to minimize wildlife interactions.
EI-10.06	Solid waste materials will be collected and transported to a licensed or approved waste disposal facility in accordance with the Solid Waste/Recycling Management Plan.
EI-10.07	Waste materials remaining at snow disposal sites after melting will be disposed of at a licensed or approved landfill.

Wetlands (EC-8)

ID	Mitigation
EC-8.01	Clearing wastes and other construction debris or waste will not be placed in wetland areas. Existing logs, snags and wood debris will be left in place.
EC-8.02	Environmental protection measures for working in and around wetlands will be reviewed with the Contractor and employees prior to commencement of any construction activities.
EC-8.03	Natural vegetated buffer areas of 30 m will be established around wetlands and riparian zones will be maintained to the extent possible.
EC-8.04	Project activities will avoid wetland areas to the extent possible. If avoidance is not practical, the extent of disturbance will be minimized. Disturbance of wetlands will only be carried out under frozen ground conditions.

Wildlife Protection (EC-9)

ID	Mitigation
EC-9.01	Any wildlife killed or injured by vehicles will be reported to Manitoba Conservation.
EC-9.02	Bird Diverters or aerial markers may be installed in high bird traffic areas.
EC-9.03	Boundaries of important wildlife habitats will be flagged by prior to commencement of construction.
EC-9.04	Clearing will occur during late fall and winter to the extent possible to avoid the spring/summer nesting season for birds and parturition times for mammal species and breeding windows for frog species
EC-9.05	Construction activities will not be carried out during prescribed timing windows for wildlife species.
EC-9.06	Construction camps will be kept clean, food will be kept in sealed storage areas, and kitchen wastes will be stored in bear-proof containers and/or electric fencing in northern and rural areas.
EC-9.07	Hunting and harvesting of wildlife by project staff will not be permitted while working on the project sites.
EC-9.08	Low, non-danger trees will be maintained in high quality lichen production areas within caribou ranges.
EC-9.09	Manitoba Conservation will be notified if animal traps are encountered and must be removed for project activities.
EC-9.10	MB Conservation and Dept.of Fisheries and Oceans will be notified if beaver dams must be cleared along rights-of-way and access roads and trails. Clearing of dams will be carried out in accordance of the DFO Operational Statement on Beaver Dam Removal
EC-9.11	No firearms will be permitted at construction sites.
EC-9.12	Orientation for Contractor and Manitoba Hydro employees will include awareness of environmental protection measures for wildlife and wildlife habitat.
EC-9.13	Problem wildlife will be reported immediately to Manitoba Conservation and Water Stewardship.
EC-9.14	Trails through or near important habitat types will be managed in accordance with the Access Management Plan.
EC-9.15	Trees containing large nests of sticks and areas where active animal dens or burrows are encountered will be left undisturbed until unoccupied. Artificial structures for nesting may be provided if unoccupied nests must be removed.
EC-9.16	Vehicles will not exceed posted speed limits and wildlife warning signs may be installed in high density areas and at known crossings locations as a result of wildlife monitoring.
EC-9.17	Where buffer zones or setbacks are not feasible for colonial waterbirds, bird deflectors will be placed on sky wires to improve visibility of the wires to birds and to minimize potential bird-wire collisions.
EC-9.18	Wildlife and wildlife habitat will be protected in accordance with provincial and federal legislation and provincial and federal guidelines.
EC-9.19	Wildlife will not be fed, befriended or harassed at construction areas.
EC-9.21	Understory vegetation will be managed at access routes to limit line of sight.
EC-9.22	New by-pass trails and access routes will be sited where possible to utilize existing natural terrain features and existing vegetation to minimize line of site.

6.0 MAP SHEETS AND MITIGATION TABLES

The map sheets and specific mitigation tables are presented in the following pages in a “map book” format. The map sheets provide an overview of Environmentally Sensitive Sites (ESS), while the associated mitigation tables provide specific mitigation requirements related to these ESS. There are a total of 15 map sheets and one map sheet index.

APPENDICES

APPENDIX A: CONTACT LIST

Contact	Name	Phone Number(s)
Construction Contractor		
	Contractor Project Manager	
	Contractor Field Lead	
	Contractor Safety and Environmental Officer	
Manitoba Hydro		
	Project Engineer	
	Construction Supervisor	
	Senior Environmental Assessment Officer	
	Environmental Monitor	
	Environmental Inspector	
	Field Safety, Health and Emergency Response Officer	
	Hazardous Materials Officer	
	Area Spill Response Coordinator	
	Emergency Response Services	
	Project Archaeologist	
Manitoba Conservation Contacts		
	District Office (Gilliam)	
First Nations Contacts		

**APPENDIX B: ENVIRONMENTAL PRE-
WORK ORIENTATION RECORD –
ATTACH SIGNED COPY**

APPENDIX C: ENVIRONMENTAL LICENCES, APPROVALS AND PERMITS

Table C-1: List of Approvals required for Construction of Section N2		
Approval required (Applicable Legislation / Regulation)	Type of Approval needed	Responsibility
Environment Act Licence (Class 3)	Licence	LEA
Crown Lands Act (Work Permit)	Permit	TLCC
Crown Lands Act (General Permit)	Permit	Property Dept.
Permit to cut timber on Crown Lands (Forest Act)	Permit	TLCC
Wildfires Act (Work Permit)	Permit	TLCC
Permit to burn wood (Wildfires Act) – outside of timing windows only	Permit	TLCC
Wildlife Management Area Permit (Wildlife Act)	Licence	TLCC
Annual Harvest Plan (Environment Act Licence)	Forestry Branch Director Approval	TLCC
Storage and Handling of Gasoline and Associated Products Regulation (Dangerous Goods Handling and Transportation Act) Blasting	Permit	Contractor
Highways Protection Act	Permit	TLCC
The Heritage Resources Act (when required)	Permit	LEA
Rail line crossing at temporary access road intersections	Permit	Property Dept.
LEA – Manitoba Hydro Licensing and Environmental Assessment Department TLCC – Transmission Line and Civil Construction Department		

APPENDIX D: FRAMEWORKS FOR CONTRACTOR-DEVELOPED ENVIRONMENTAL PLANS

D.1 Waste and Recycling Management Planning Framework

Introduction

The Bipole III Transmission Project (the Project) is a large scale development that has potential to generate a significant waste stream. To manage and reduce the amount of materials flowing from the construction of the Project, Manitoba Hydro will require Waste and Recycling Management Plans (W&R) plans from construction contractors in an effort to reduce the volume of materials going to landfill and facilitate reuse and recycling. Where applicable, the W&R Plan will also address wastes developed in the operation of work camps. This framework outlines the objectives, scope and materials to be covered in the W&R Plan required by each applicable contractor for the construction of the Bipole III Transmission Project.

Purpose of Framework

Manitoba Hydro recognizes the need to proactively address the issue of waste management. This document provides a framework to guide contractors in the preparation and implementation of a Waste and Recycling Management Plan, which is a crucial step in managing waste generation and disposal.

Objectives

Manitoba Hydro's objective for developing this Waste and Recycling Management Plan framework is to provide guidance to contractors in the development of a W&R Plan. The W&R Plan must contain the necessary components to meet regulatory requirements, applicable Acts and regulations, industry standards, and best practices in waste reduction, re-use and recycling for the Bipole III Transmission Project.

The goal of the W&R Plan is to reduce the amount of waste disposed at landfills while optimizing waste reduction, reuse and recycling activities. To obtain this goal, W&R Plans will include strategies related to waste minimization and avoidance, appropriate waste treatment and the applicable handling, storage, collection, recycling and disposal of waste. This framework will outline and define Manitoba Hydro's expectations for a W&R Plan to the contractor. Establishing these expectations and minimum requirements in a framework provides the contractor with the opportunity to develop more efficient processes which will meet or exceed Manitoba Hydro's goals of waste reduction and prevention.

Definitions

For the purposes of developing a Waste and Recycling Management Plan, below are the definitions of waste and hazardous waste.

The Environment Act definition of waste is:

"waste" includes rubbish, litter, junk, or junked obsolete or derelict motor vehicles, or obsolete or derelict equipment, appliances or machinery; slimes, tailings, fumes, waste of domestic, municipal, mining, factory or industrial origin; effluent or sewage; human or animal wastes; solid or liquid manure; or waste products of any kind whatsoever or the run-off from such wastes.

The Dangerous Goods Handling and Transportation Act definition of hazardous waste is:

“hazardous waste” means a product, substance or organism that

- a) is prescribed, designated or classified as hazardous waste in the regulations, or
- b) by its nature conforms to the classification criteria for one or more classes of hazardous wastes set out in the regulations.

Plan Scope

Each W&R Plan must identify the nature of the waste generated by the contractor. Examples of waste that are expected to be produced by the Project and be covered by the W&R Plan are found in the following table. (Note: this is not an exhaustive list.)

Table D-1: Materials to be Covered by the W&R Plan

Category	Items
Hazardous waste	Motor oils, fuels, solvents, coolants, pesticides, other chemicals
Construction materials	Wood, aluminum, copper, steel, cardboard, plastic
Food services	Beverage containers (aluminum and glass), cardboard, boxboard, plastics, newsprint, office paper
Domestic solid waste	Organic material, non-recyclable waste
E-waste	Computers, circuitry, batteries
Construction equipment	Rubber tires, lead-acid batteries, hydraulic fluid, oil filters

For each waste item identified in Table D-1, the following is required:

- the waste management method to be employed (reuse, recycle, landfill);
- collection, handling, storage, treatment and transportation requirements;
- final destination (landfill, recycle depot, etc.); and
- Municipal approvals for waste destined to a licensed waste disposal ground or landfill.

Related Environmental Protection Program Documents

When contactors develop a Waste and Recycling Management Plan, the Construction Environmental Protection Plan and the Project Environmental Plan should be referenced as these plans include waste mitigation measures.

Waste Management

The Waste and Recycling Management Plan must provide a process to which a hierarchical approach is taken to waste management. The purpose of the hierarchy is to assess each waste item for opportunities to avoid waste, then opportunities to reuse, followed by opportunities to recycle prior to disposal. This hierarchy will be as follows:

- compliance with federal and provincial waste management legislation (i.e., Acts and Regulations);
- waste avoidance;
- waste re-use;
- waste recycling; and
- waste disposal (as a final option).

Prior to the start of construction, the contractor must ensure that the waste disposal grounds are willing and have the capacity to accommodate the projected waste volume. Waste disposal grounds must be registered with Manitoba Conservation and Water Stewardship and be in accordance with the Waste Disposal Grounds Regulation (150/91, July 9 1991).

Waste Management Activities

The Waste and Recycling Management Plan must also include waste management activities to address the following:

- waste avoidance, reuse and recycling;
- waste segregation, storage and handling;
- waste transport and disposal;
- tracking of waste volumes produced;
- waste monitoring and reporting; and
- spill response and reporting as per Manitoba Hydro's Spill Response and Reporting Plan.

Due to the remoteness of some of the Project worksites there will be differing levels of waste segregation due to the logistical challenges of waste management during the construction of the Project. Table D-2 reflects the expected waste stream handling capabilities for typical project worksites.

Other Plan Considerations

- Waste kept on-site must be stored in such a way as to not pose health and safety risks.
- Recyclables destined for depots in major centers in Winnipeg or Thompson) should be back-hauled to reduce transportation costs.
- Methods for disposal of cleared vegetation, including trees, shrubs and undergrowth resulting from clearing will be covered by the Project's Construction Environmental Protection Plans and through consultation with the Regional Forrester as per the licence document.
- Waste excavated material will be reused wherever possible and waste material is to be disposed of by a licensed waste contractor. Stockpiles and waste that must be stored temporarily on site will be stored on existing cleared areas away from drainage channels and slopes.

Waste and Recycling Management Plan Approval

A detailed Waste and Recycling Management Plan must be developed by the contractor and submitted for approval by the Senior Environmental Assessment Officer in the Transmission Line Construction Department or the Senior Environmental Specialist for New Generation Construction. The W&R plan must address all applicable issues and concerns identified in this Waste and Recycling Management Plan framework. The detailed W&R plan submitted by the contractor must include all actions needed to effectively implement the Waste and Recycling Management Plan and its waste management hierarchy.

Table D-2: Preferred Waste Management Methods

Category	Items	Preferred Waste Management Methods
Hazardous Waste	Motor oils, oil filters, lead-acid batteries, hydraulic fluid, fuels, solvents, coolants, pesticides, other chemicals and their containers	Separate hazardous waste materials by type and store them segregated from the waste stream in approved containers and containment areas.
		Ensure that staff handling wastes is trained in the handling and transportation of hazardous waste.
		Inventory and account for hazardous waste leaving collection areas.
		Transportation off-site by licensed regulated waste transporter and disposal off-site by a regulated waste receiver, for recycling or proper disposal.
Construction Materials	Aluminum, copper, steel, scrap conductors	Collected and segregated on-site, transported for off-site recycling.
	Wood - timber off cuts, pallets, wooden boxes	Minimize waste by producing or using only the amount necessary. Off cuts and pallets to be burnt on-site or disposed of in landfills licensed by MCWS with capacity to accept and separate construction wastes.
	Cardboard packing and boxes	Collected and recycled at landfill
	Plastic bags and plastic packaging	Collected and disposed of at landfill
Food Services (Non-Hazardous Waste)	Beverage containers (aluminum, glass,), cardboard, boxboard, plastics, newsprint, office paper	Collected and recycled
Non-Hazardous Solid Waste	Grease Trap wastes and organic food waste	Store materials in wildlife-proof waste containers or in secure location. Waste will be taken off-site for disposal.
Electronic Wastes	Computers, circuitry, etc.	Electronic waste will be stored and transported off-site to a licensed e-waste receiver for recycling or disposal.
Construction Equipment	Rubber tires	Tires will be stored and transported off-site to a licensed regulated waste receiver for recycling or disposal.

Table D-2: Preferred Waste Management Methods

Category	Items	Preferred Waste Management Methods
Excavated Material	Excess material removed during construction	<p>Refill any excavations and spread any excess over the nearby area and allow to re-vegetate.</p> <p>Waste materials will be reused as much as practicable to construct, haul roads, pads, etc.</p>
Waste Concrete	Footing pours	<p>Minimize waste by producing only the amount necessary.</p> <p>Disposal in designated area(s) for concrete washout.</p> <p>Regularly break-up and remove hardened concrete for proper disposal in landfill or used as fill on site.</p>
Cleared Vegetation	Vegetation cleared during construction of yard sites, Access Roads and the ROW	<p>Felling, chipping, mulching or burning.</p> <p>Salvage timber on Crown Land where practical and feasible.</p> <p>Follow burning procedures for non-salvaged timber.</p> <p>Vegetation mulch/chips may be retained on site for use in mitigation and site management works (e.g., erosion control).</p> <p>Mulch/chips may be utilized by local landowners where practical and feasible.</p>

D.2 Erosion and Sediment Control Planning Framework

Introduction

Part of Manitoba Hydro's commitment to environmental protection includes the development of an Environmental Protection Program (EPP) for the Bipole III Transmission Project (the 'Project'). Aspects of this program include planning, monitoring and follow up for erosion and sediment control. This document provides the Framework for the development of Erosion and Sediment Control Plans (ESCP) by construction contractors for the project.

This Framework is intended to provide assurance to regulatory reviewers, environmental organizations, Aboriginal communities and the general public that commitments made in the Project Environmental Impact Statement (EIS) and Construction Environmental Protection Plans (CEnvPPs) will be implemented and monitored in a responsible and accountable manner.

Background

Land disturbing activities associated with the proposed construction of the Project may involve soil, rock, and vegetation removal. This surficial disturbance may result in soil erosion and/or sedimentation in the construction areas and beyond.

Erosion and sedimentation are naturally occurring processes involving the loosening, transport and deposition of soils. Erosion involves the wearing away of soil materials, caused by the action of wind or water, through detachment and transport of materials while sedimentation is the deposition of soil particles previously held in suspension by flowing water.

Water runoff is also part of the natural hydrological cycle, however, clearing, grading, and other construction activities that remove vegetation and compact the soil may result in increased runoff. Excessive runoff may cause erosion, sedimentation, or flooding.

Construction activities can result in a rapid increase in erosion and sedimentation rates that, if left uncontrolled, can reparably or irreparably harm the environment.

Purpose

It is important that land and water resources are protected from soil erosion. Manitoba Hydro recognizes the need to proactively address the issues of erosion and sedimentation. This document provides a framework to guide contractors in the preparation and implementation of an ESCP, which is a crucial step in managing and mitigating erosion and sedimentation.

Objectives

The objectives of the erosion and sediment control Framework are as follows:

- To provide a framework for erosion, sediment control and planning.
- To identify a process to develop an ESCP that meets regulatory requirements, industry standards and best practices.

- To provide guidance on the development of an ESCP that contains the necessary components to meet regulatory requirements, industry standards and best practices.

Roles and Responsibilities

The following table summarizes the roles and responsibilities of the main participants in the ESCP:

Manitoba Hydro	<ul style="list-style-type: none"> • Ultimate responsibility for ESC planning, design, implementation, inspection, monitoring, maintenance, operation, and decommissioning. • May delegate this responsibility to numerous design and construction professionals to construct/implement, maintain and inspect /monitor for the duration of the undertaking. • Signs agreements, approvals permits and Authorizations to which compliance is legally binding. • Ensure Contractors are aware of their responsibilities and are back charged for construction of ESC measures installed, maintained and specific restorations requirements. • Appoint an Environmental Inspector to confirm that regulatory criteria are being met by the ESCP.
Construction Contractor	<ul style="list-style-type: none"> • Erosion Protection and Sediment Control Plans will be prepared by the Contractor, approved by the Construction Supervisor and/or the Senior Environmental Assessment Officer and updated annually. • The Contractor will communicate erosion protection and sediment control information to all project staff and will ensure a copy of the Erosion and Sediment Control Plan will be made available at the project site. • The Contractor will be responsible for implementing and maintaining Erosion Protection and Sediment Control Plans and procedures. • The Contractor will be responsible for modifying erosion protection and sediment control installations to ensure continued effectiveness. • Vigilant for operation and maintenance of ESC measures. • Appoint a Construction Inspector to confirm that regulatory criteria are being met by the ESCP. • Respond promptly to feedback from the Environmental Inspector, Regulator, or Construction Supervisor.
Environmental Inspector	<ul style="list-style-type: none"> • Conduct regular monitoring of ESC measures to confirm proper implementation and effectiveness of controls. • Provide feedback to the Construction Contractor and the Licensing and Environmental Assessment Officer. • Document site inspections and corrective actions. • Maintain log books/ records.

Responsibilities for the development and implementation of an ESCP should be carried out in the order below:

- A project-specific Erosion Protection and Sediment Control Plan will be prepared prior to starting construction in erosion susceptible areas.

- Erosion Protection and Sediment Control Plans will be prepared by the Contractor, approved by the Construction Supervisor and/or the Senior Environmental Assessment Officer and updated annually.
- The Contractor will communicate erosion protection and sediment control information to all project staff and a copy of the Erosion and Sediment Control Plan will be made available at the project site.
- The Contractor will be responsible for implementing and maintaining Erosion Protection and Sediment Control Plans and procedures.
- The Contractor will be responsible for modifying erosion protection and sediment control installations to ensure continued effectiveness.
- The Contractor Environment Officer will conduct regular monitoring of erosion and sediment control measures to confirm implementation and continued effectiveness.
- The MH Environmental Inspector will make regular inspections of erosion protection and sediment control measures to confirm regulatory criteria are being met.

Erosion and Sediment Control Plan Components

The plan should include both temporary and permanent ESC's. Temporary ESC's are those that are in place during the construction phase, or a portion thereof, when exposed soils are vulnerable to increased erosion rates and streams are at risk of sedimentation. Permanent ESC's are those that are to be maintained throughout the operational phase of the Project.

General environmental protection components pertaining to erosion protection and sediment control are listed below.

1. Phase construction to limit soil exposure.
2. Minimize needless stripping and grading.
3. Stabilize exposed soils immediately.
4. Protect waterways and stabilize drainage ways.
5. Protect steep slopes and cuts.
6. Install perimeter controls.
7. Employ advanced sediment settling controls.
8. Ensure contractors are trained in ESC plan, implementation, inspections, maintenance and repairs.
9. Adjust ESC plan at construction site, as required.
10. Assess effectiveness of ESC control measures regularly and after storms, and repair, replace or upgrade, as required.
11. Respond to Environmental Improvement Orders related to erosion and sediment control, as required, if issued by Manitoba Hydro.

Monitoring and Inspection

Monitoring and Inspection is necessary to ensure the effectiveness of the plan. It provides confirmation of proper implementation and effectiveness of environmental protection measures, therefore contributing to the overall success of a project. Manitoba Hydro will provide Environmental Inspectors prior to the start of Project to conduct inspections of environmental components (soil and water) targeted for protection by erosion and sediment control measures in order to confirm that regulatory requirements are being achieved. Post-construction monitoring is often required to ensure the restoration, stabilization, and required monitoring of constructed features/habitats is established.

It is the duty of the contractor to ensure that the erosion and sediment control measures are properly installed, well maintained and functioning as intended on a daily basis. The ESCP should provide the framework for the inspection, maintenance including the need for repair, and record-keeping procedures during all stage of construction. The effectiveness of the ESCP depends directly on the frequency of monitoring and what actions are taken to address any failures that may occur. Documentation of all monitoring activities should be kept by the Contractor for a minimum of one (1) year after the development is substantially completed.

An effective construction monitoring program should include the following:

1. Construction drawings detailing the erosion and sediment controls installed which is updated through the construction period.
2. High risk areas should be identified on these drawings and routinely evaluated.
3. During inactive construction periods, where the site is left alone for 30 days or longer, a monthly monitoring should be conducted.
4. All damaged ESC measures should be repaired and/or replaced.
5. A monitoring schedule will be drawn up to include times, areas and person(s) responsible.

APPENDIX E: CONTRACTOR- DEVELOPED ENVIRONMENTAL PLANS

E.1 Emergency Preparedness and Response Plan

Attach Contractor developed Emergency Preparedness and Response Plan

E.2 Waste and Recycling Management Plan

Attach Contractor developed Waste and Recycling Management Plan

E.3 Erosion and Sediment Control Plan

Attach Contractor developed Erosion and Sediment Control Plan

APPENDIX F: FISHERIES AND OCEANS CANADA OPERATIONAL STATEMENTS