

Bipole III Transmission Project

Project Infrastructure

- Final Preferred Route
- Planning Segment Division
- Local Study Area

Infrastructure

- Converter Station
- Generating Station
- Bipole I and II
- Transmission Line

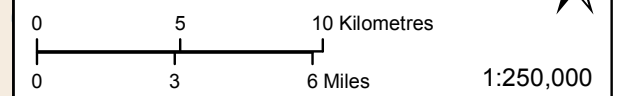
Access

- 12 Proposed Access Route
 - 12RT Proposed Access Point*
 - 12 Abandoned Rail crossing
 - 12 Rail crossing
 - 12 Transmission Line Crossing
 - 12 Major Stream Crossing
- * R=Access point along existing highway
T= Access point along Bipole III Final Preferred Route

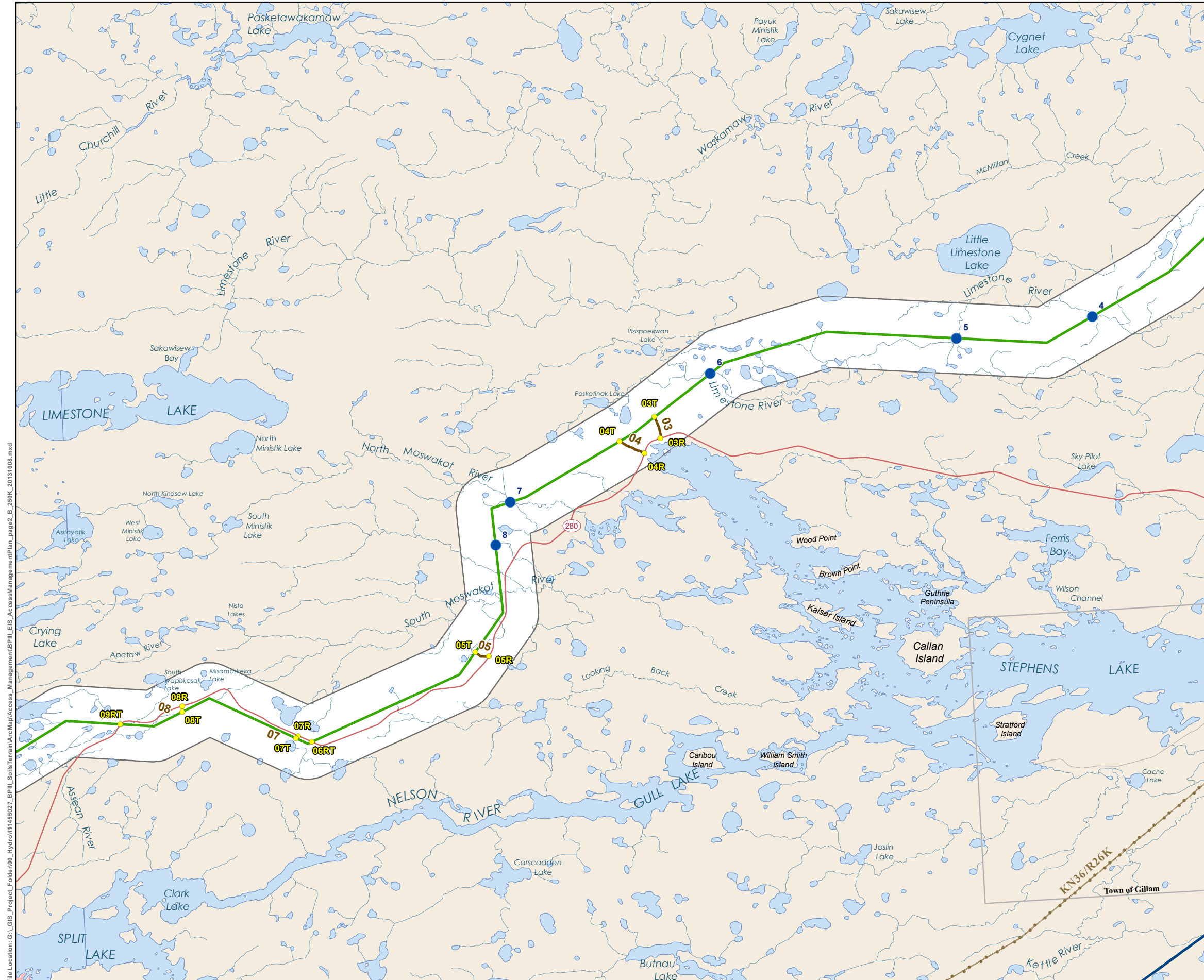
Landbase

- Community
- City / Town
- First Nation
- National/Provincial Park
- Rural Municipality
- Wildlife Management Area

Coordinate System: UTM Zone 14N NAD83
Data Source: MBHydro, Stantec, ProvMB
Date Created: October 08, 2013



Construction Access Opportunities



File Location: G:\GIS\Project_Folder\00_Hydro\11455027_BP111_SoilsTerrainArcMap\Access_Management\BP111_EIS_AccessManagementPlan_page2_B_250K_20131008.mxd

G:\GIS_Projects\Folder0221-Hydro\11255079_BPIII_Soils\IDD\BPIII\AccessDatabase\Tables_2010412.indd

STREAM CROSSINGS									
ID	Easting	Northing	Waterbody Name	Access Notes and Comments	Water Width (m)	Channel Width (m)	Bank Stability (Right Bank)	Bank Stability (Left Bank)	Substrate
4	754290	6280477	Limestone River 1	May require access between Limestone R crossing 1 and 2 (10km S)	12	12	100	100	Fines
5	745072	6278993	Limestone River 2	May require access between Limestone R crossing 2 and 3 (17km S); Limestone blocks access to ROW	15	15	100	100	Fines
6	728337	6276596	Limestone River 3	May require access between Limestone R and Assean R (60km S)	11	11	70	70	Fines
7	714738	6267847	North Moswakot River		8.9	8.9	100	100	Fines
8	713770	6264940	Tributary of South Moswakot River		110	50			

PROPOSED ACCESS POINTS									
ID	Easting	Northing	Comments	Access Type	Distance to Previous Access Point Along ROW	Distance to Next Access Point Along ROW	Distance to Previous Access Point Along Road	Distance to Next Access Point Along Road	
03R	724942	6272194	Access point 03 along existing cutline intersecting with PR 280	Road	NA	NA	50km	1.7km	
03T	724542	6273647	Access point 03 along existing cutline intersecting with PR 280	ROW	54km	3km	NA	NA	
04R	723869	6271211	Access point 04 along existing cutline intersecting with PR 280	Road	NA	NA	1.7km	20km	
04T	722175	6271995	Access point 04 along existing cutline intersecting with PR 280	ROW	3km	20km	NA	NA	
05R	713270	6257376	Existing cutline from PR 280	Road	NA	NA	20km	14km	
05T	712371	6257676	Existing cutline from PR 280	ROW	20km	12.5km	NA	NA	
06RT	701260	6251563	PR 280 Crossing	Road/ROW	12.5km	1km	14km	900m	
07R	700326	6251970	Access point 07 along existing cutline intersecting with PR 280	Road	NA	NA	900m	9km	
07T	700177	6251806	Access point 07 along existing cutline intersecting with PR 280	ROW	1km	8.5km	NA	NA	
08R	692441	6253982	Access point 08 along existing cutline intersecting with PR 280	Road	NA	NA	9km	4.5km	
08T	692453	6253600	Access point 08 along existing cutline intersecting with PR 280	ROW	8.5km	4.5km	NA	NA	
09RT	688239	6252758	intersection with PR 280	Road/ROW	4.5km	59km	4.5km	60km	

PROPOSED ACCESS ROUTES				
ID	Description	Rationale	Issues	Access Length
03	Unmapped linear disturbance, within study corridor	Within corridor; outside of Stephens Lake Area of Special Interest		1.5km to PR 280
04	Unmapped linear disturbance, within study corridor	Within corridor; outside of Stephens Lake Area of Special Interest		1.9km to PR 280
05	Existing cutline	Existing cutline, mostly cleared	90m requires clearing or longer alternate route to SW to be used	1km to PR 208
07	Existing linear disturbance	Existing disturbance, already cleared		220m to PR 280
08	Unmapped linear disturbance, within study corridor	Within corridor	requires groundtruthing	370m to PR 220



North South Consultants Inc.

4-Limestone River



North South Consultants Inc.

5-Limestone River



North South Consultants Inc.

6-Limestone River



North South Consultants Inc.

7-North Moswakot River



North South Consultants Inc.

8-Tributary of South Moswakot River

Bipole III Transmission Project

Project Infrastructure

- Final Preferred Route
- Planning Segment Division
- Local Study Area

Infrastructure

- Converter Station
- Generating Station
- Bipole I and II
- Transmission Line

Access

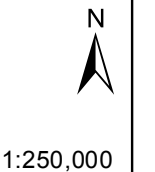
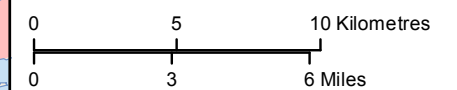
- Proposed Access Route
- Proposed Access Point*
- Abandoned Rail crossing
- Rail crossing
- Transmission Line Crossing
- Major Stream Crossing

* R=Access point along existing highway
T= Access point along Bipole III Final Preferred Route

Landbase

- Community
- City / Town
- First Nation
- National/Provincial Park
- Rural Municipality
- Wildlife Management Area

Coordinate System: UTM Zone 14N NAD83
Data Source: MBHydro, Stantec, ProvMB
Date Created: October 08, 2013



Construction Access Opportunities

File Location: G:\GIS\Project_Folder\03_Hydro\11456027_BPIII_Soils\Terrain\Access_Management\BPIII_EIS_AccessManagementPlan_B_260K_20120808.mxd

G:\GIS_Project_Folder\021-Hydro\11255079_BPIII_Soils\IDD\BPIII\AccessDatabase\Tables_2010412.mxd

STREAM CROSSINGS									
ID	Easting	Northing	Waterbody Name	Access Notes and Comments	Water Width (m)	Channel Width (m)	Bank Stability (Right Bank)	Bank Stability (Left Bank)	Substrate
9	676597	6249672	Crying River	May require access between Assean R and Hunting R (7km S); Broad saturated floodplain with shrubs	10	10	100	100	Fines
10	670075	6248579	Hunting River	May require access between Hunting R and Assean R (7km N) and Missewaitay R (21km S); Flooded into floodplain and shrubs	14.5	21.7	80	80	
11	650330	6240902	Missewaitay River	40km S to PR 280, may require access between Missewaitay and Hunting R (21km N); 1.0 m bank height	12	12	100	100	Fines

PROPOSED ACCESS POINTS									
ID	Easting	Northing	Comments	Access Type	Distance to Previous Access Point Along ROW	Distance to Next Access Point Along ROW	Distance to Previous Access Point Along Road	Distance to Next Access Point Along Road	
10R	641423	6225865	Access point 10 along existing outline intersecting with PR 280	Road	NA	NA	60km	8.5km	
10T	641702	6227833	Access point 10 along existing outline intersecting with PR 280	ROW	59km	9.5km	NA	NA	
11R	633676	6222316	Access point 11 along existing outline intersecting with PR 280	Road	NA	NA	8.5km	12.5km	
11T	633646	6222603	Access point 11 along existing outline intersecting with PR 280	ROW	9.5km	12.5km	NA	NA	

PROPOSED ACCESS ROUTES				
ID	Description	Rationale	Issues	Access Length
10	Existing linear disturbance	Existing disturbance	requires groundtruthing	2.3km to PR 280
11	Existing linear disturbance from PR 280	Existing disturbance, already cleared		230m to PR 280



9-Crying River



10-Hunting River



11-Missewaitay River

Bipole III Transmission Project

Project Infrastructure

- Final Preferred Route
- Planning Segment Division
- Local Study Area

Infrastructure

- Converter Station
- Generating Station
- Bipole I and II
- Transmission Line

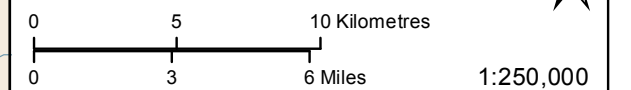
Access

- 12 Proposed Access Route
 - 12RT Proposed Access Point*
 - 12 Abandoned Rail crossing
 - 12 Rail crossing
 - 12 Transmission Line Crossing
 - 12 Major Stream Crossing
- * R=Access point along existing highway
T= Access point along Bipole III Final Preferred Route

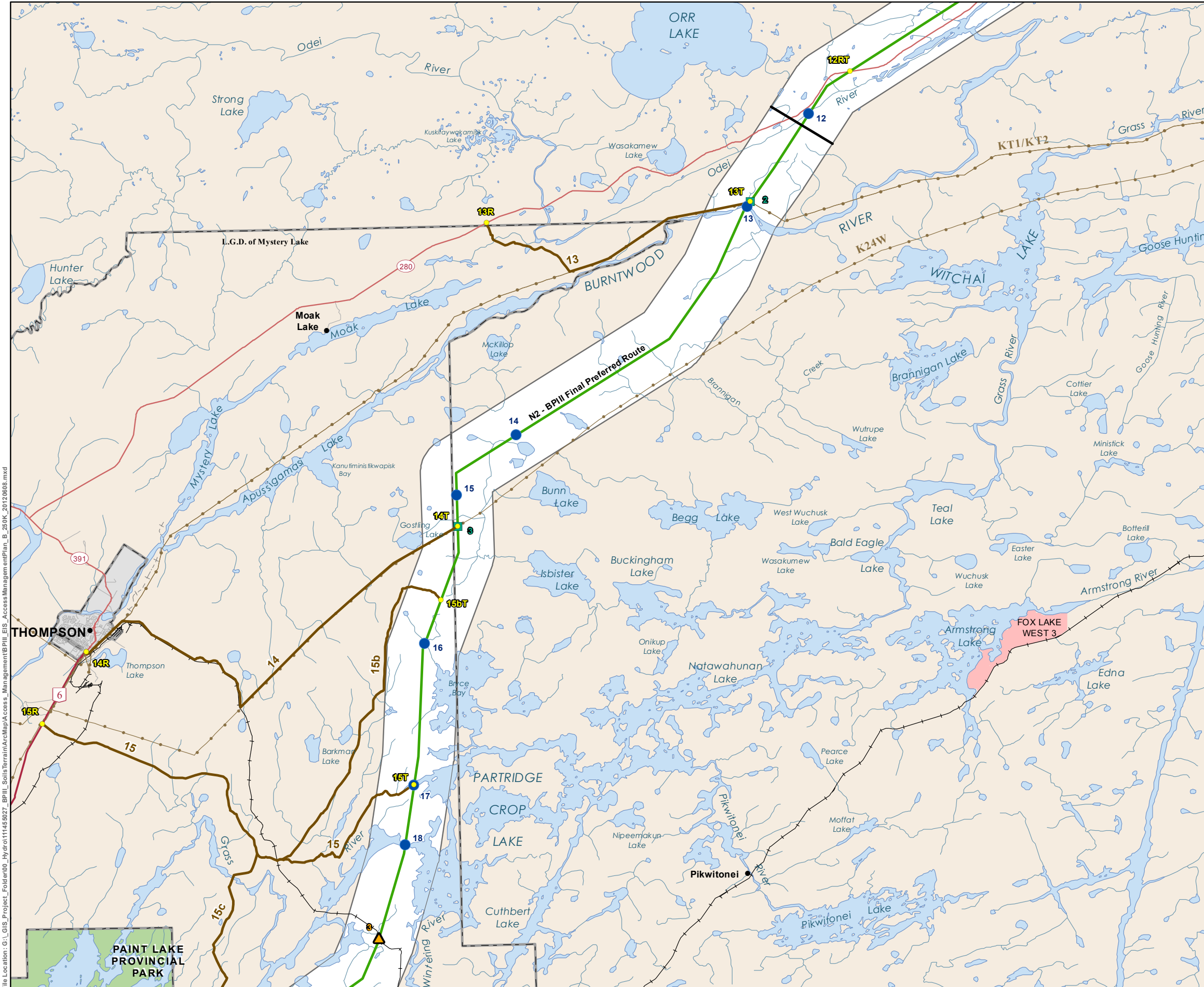
Landbase

- Community
- City / Town
- First Nation
- National/Provincial Park
- Rural Municipality
- Wildlife Management Area

Coordinate System: UTM Zone 14N NAD83
Data Source: MBHydro, Stantec, ProvMB
Date Created: October 08, 2013



Construction Access Opportunities



File Location: G:\GIS\Project_Folder\00_Hydro\11454927_BPIII_SoilsTerrainArcMap\Access_Management\BPIII_EIS_Access_Management.mxd
Created By: Stantec Consulting

G:\GIS_Projects\Folder0221-Hydro\11255079_BPIII_Soils\IDD\BPIII\AccessDatabase\Tables_2010412.mxd

STREAM CROSSINGS									
ID	Easting	Northing	Waterbody Name	Access Notes and Comments	Water Width (m)	Channel Width (m)	Bank Stability (Right Bank)	Bank Stability (Left Bank)	Substrate
12	620366	6212978	Odei River	Steep approach and banks	122.4	132.5	see red hen	see red hen	
13	616187	6206737	Burntwood River	Requires access south of Burntwood River, see access opportunities 15 and 15b, PR 280 10km N; Eroding unstable banks	212	219	50	60	
14	600606	6191298	Wetland (near Bunn Lake)				100	100	
15	596607	6187242	Tributary of Isbister Creek		2 ponded areas - 41 and 42		80	80	
16	594456	6177231	Tributary of Bryce Bay (Partridge Crop Lake) Creek		68 (ponded area)		100	100	
17	593719	6167661	Partridge Crop Lake (Fish Bay)	Stable banks	62.8	267.96	70	80	Fines
18	593115	6163654	Grass River	May require access b/w Partridge Crop L and Burntwood R, see access opportunities 15 and 15b	144.1	152.9	0	0	B

PROPOSED ACCESS POINTS								
ID	Easting	Northing	Comments	Access Type	Distance to Previous Access Point Along ROW	Distance to Next Access Point Along ROW	Distance to Previous Access Point Along Road	Distance to Next Access Point Along Road
12RT	623153	6215859	PR 280 crossing	Road/ROW	12.5km	11km	12.5km	28km
13R	596777	6204658	Access point 13 along existing MH road and trans line intersecting with PR 280	Road	NA	NA	28km	51km
13T	616426	6207070	Access point 13 along existing MH road and trans line intersecting with PR 280	ROW	11km	31km	NA	NA
14R	574066	6178745	Access point 14 along existing cutline intersecting with existing transmission line (KT1/K24W)	Road	NA	NA	51km	5.7km
14T	596679	6185128	Access point 14 along existing cutline intersecting with existing transmission line (KT1/K24W)	ROW	31km	5km	NA	NA
15R	568637	6171790	Access point 15 along existing cutline intersecting with PTH 6	Forestry Road	NA	NA	5.7km	79km
15T	593725	6167716	Access point 15 along existing cutline intersecting with PTH 6	ROW	12.7km	29km	NA	NA
15bT	595550	6180168	Access point 15 along existing cutline intersecting with PTH 6	Winter Road	5km	12.7km	NA	NA

PROPOSED ACCESS ROUTES				
ID	Description	Rationale	Issues	Access Length
13	Access route along winter road and t-line (Kettle to Thompson 138 kV)	Linear disturbance across corridor	Long distance to existing major access via MH roads; Groundtruthing required to determine best route.	20.5km to PR 280
14	Access route along MH road and t-line (Kelsey to Mystery Lake 138 kV)	Existing MB Hydro linear disturbance	Outside of study corridor; stream crossings of unknown status; length	33.5km to PTH 6
15	Access route along Tolko Halfway River Jonas Road category 1, road number 4 onto NRN Winter Rd; maintained; pot camp site at rail xing	Maintained forest road; potential camp at rail xing	Outside of study corridor; many stream crossings of unknown status; length; Groundtruthing required to determine best route.	33km to PTH 6
15b	Access route along forestry road; Tolko Isbister Buckingham Lake Rd Jonas Road category 2 road number 70	Existing forestry road	Outside of study corridor; many stream crossings of unknown status; length	46km to PTH 6
15c	Access route along forestry road; Tolko Halfway River Jonas Road category 1, road number 4	Existing forestry road	Outside of study corridor; many stream crossings of unknown status; length	42km to PTH 6

RAILWAY CROSSINGS			
ID	Easting	Northing	Status
3	591357	6157342	Rail

TRANSMISSION LINE CROSSINGS			
ID	Easting	Northing	T-Line Name
2	616417	6207059	Kettle to Thompson (INCO)
3	596673	6185154	Kelsey to Mystery Lake



North South Consultants Inc.
12-Odei River



North South Consultants Inc.
13-Burntwood River



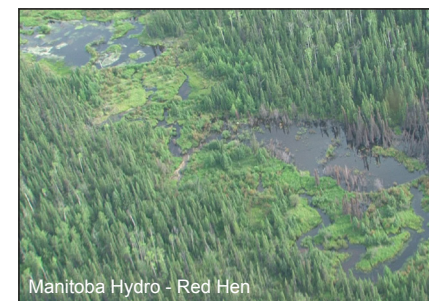
North South Consultants Inc.
18-Partridge Crop Lake



Manitoba Hydro - Red Hen
14-Wetland (near Bunn Lake)



Manitoba Hydro - Red Hen
15-Tributary of Isbister Creek



Manitoba Hydro - Red Hen
16-Tributary of Bryce Bay