

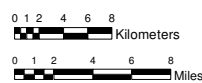
Legend

- Affected 1/2 Mile Change Private Cropland
- Secured Easements within Cropland
- Secured Easements outside of Cropland
- Unsecured Easements within Cropland
- Unsecured Easements outside of Cropland

Final Preferred Route

- Final Preferred Route
- Annual Crops/Cultivated Land
- N3, N4, C1, C2, S1 Const Zone Dividers
- - - Existing Transmission Line - 230 kV
- - - Railway Line
- First Nation
- Wildlife Management Area
- National/Provincial Park
- Provincial Forest

Bipole III Transmission Project



Projection: UTM
 Datum: NAD 1983
 Zone: 18N
 False Easting: 500000
 False Northing: 0
 Central Meridian: -99
 Scale Factor: 0.9996
 Latitude Of Origin: 0
 Linear Unit: Metre
 Scale: 1:500,000
 Dated: July 25, 2012

