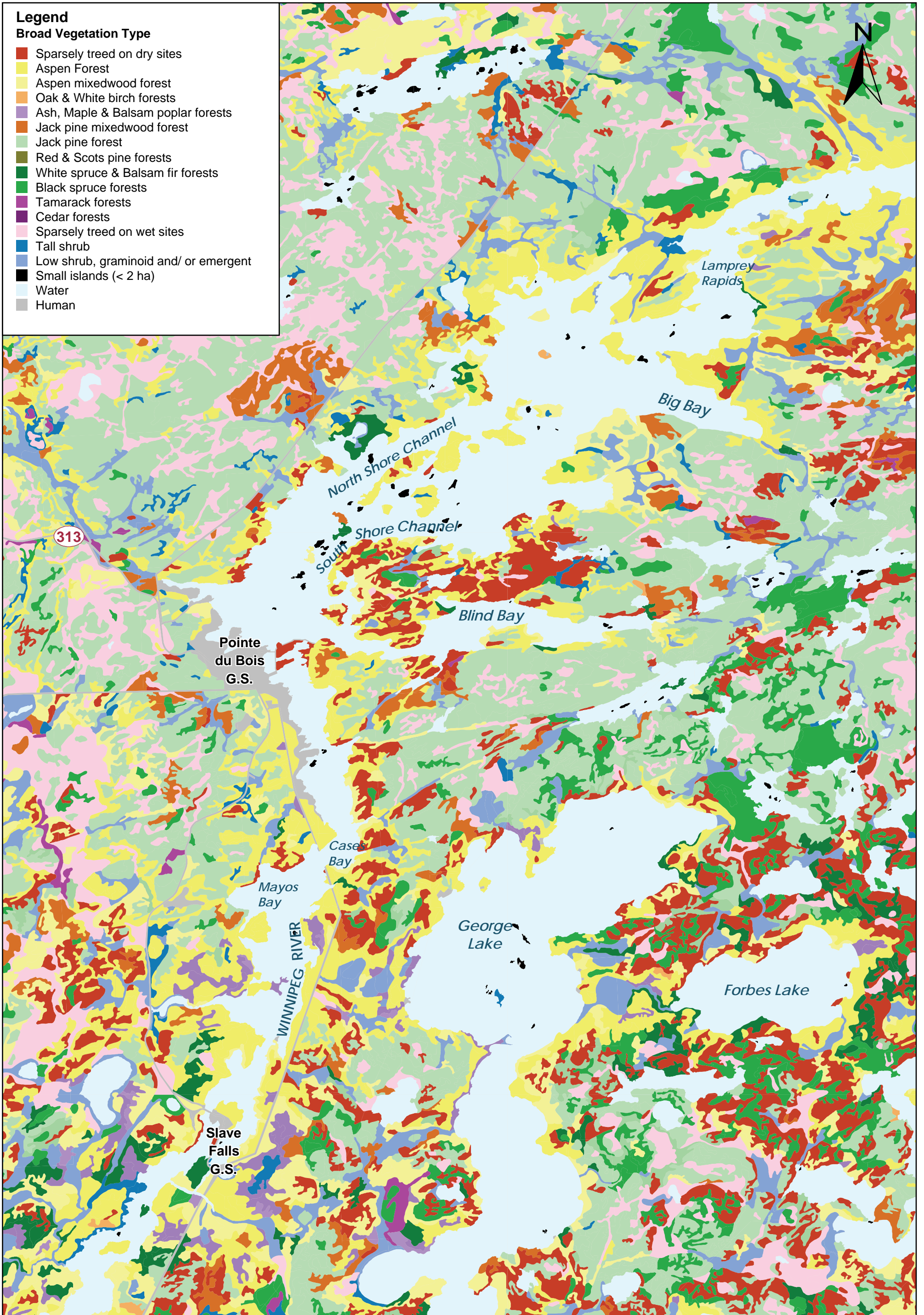


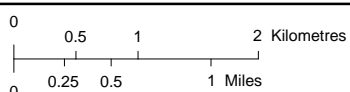
**Legend**

**Broad Vegetation Type**

- Sparsely treed on dry sites
- Aspen Forest
- Aspen mixedwood forest
- Oak & White birch forests
- Ash, Maple & Balsam poplar forests
- Jack pine mixedwood forest
- Jack pine forest
- Red & Scots pine forests
- White spruce & Balsam fir forests
- Black spruce forests
- Tamarack forests
- Cedar forests
- Sparsely treed on wet sites
- Tall shrub
- Low shrub, graminoid and/ or emergent
- Small islands (< 2 ha)
- Water
- Human



Coordinate System: UTM NAD 1983 Z14



DATA SOURCE:  
Broad vegetation cover - Manitoba Conservation Forest Resource Inventories.

DATE CREATED:

17 May 2011

CREATED BY:

ECOSTEM Ltd.

REVISION NO:

MAP 1.2

REVISION DATE:

26 May 2011

QA/QC:

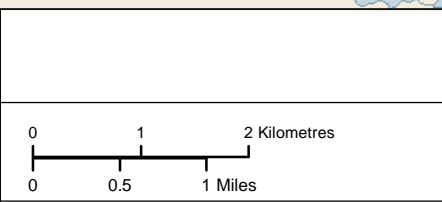
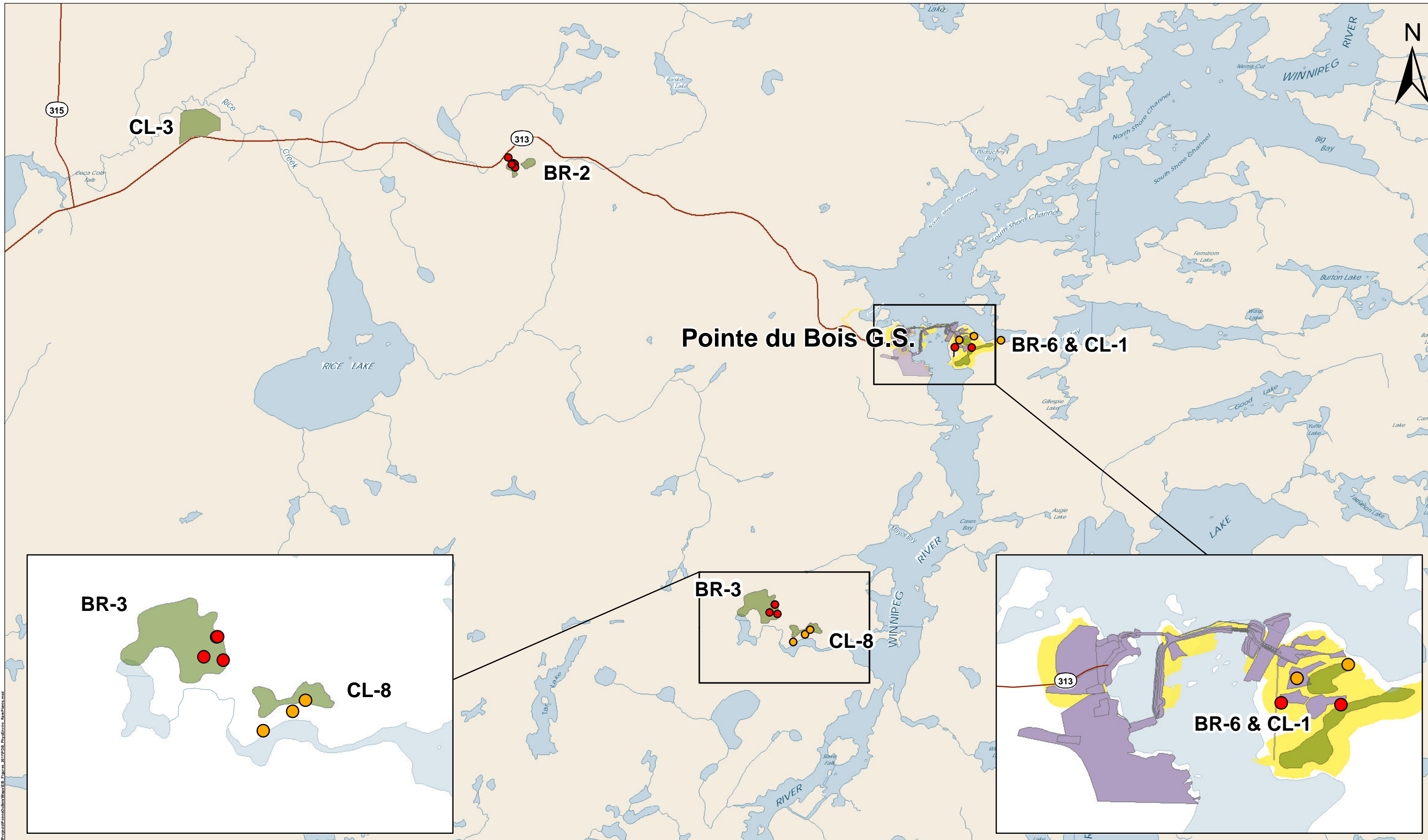
ECOSTEM, RB

**Pointe du Bois  
Spillway Replacement Project**

**Broad Vegetation Type in the  
Pointe du Bois Study Area**

Figure:  
7.21





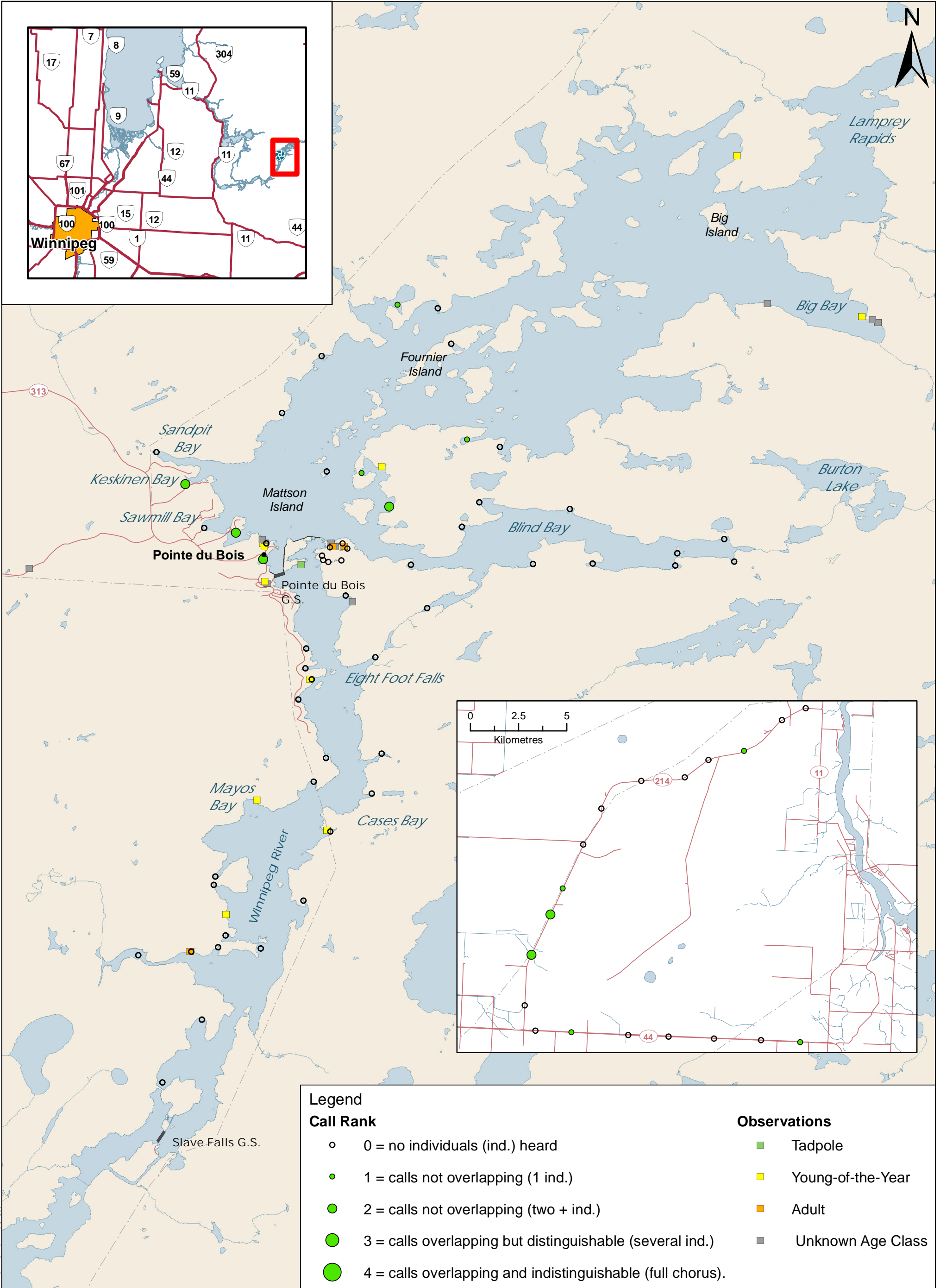
DATA SOURCE: Manitoba Hydro, MMM Group, ECOSTEM		
DATE CREATED: 16 MAY 2011	CREATED BY: HPP - GIS	
REVISION NO: VERSION 1	REVISION DATE: 27 MAY 11	QA/QC: RB/MZ MB HYDRO

<b>Legend</b>		
● Very Rare Plants (S1)	Infrastructure	Material Source Areas
● Rare Plants (S2)	Potential Disturbance Area	
G.S. - Generating Station		

**Pointe du Bois  
Spillway Replacement Project**

**Rare Plant Locations**

**Figure:  
7.22**



**Legend**

**Call Rank**

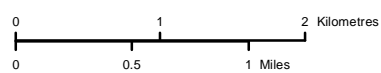
- 0 = no individuals (ind.) heard
- 1 = calls not overlapping (1 ind.)
- 2 = calls not overlapping (two + ind.)
- 3 = calls overlapping but distinguishable (several ind.)
- 4 = calls overlapping and indistinguishable (full chorus).

**Observations**

- Tadpole
- Young-of-the-Year
- Adult
- Unknown Age Class



Coordinate System: UTM NAD 1983 Z15



DATA SOURCE:

MH, NSC

DATE CREATED:

10 MAY 2011

CREATED BY:

NSC

REVISION NO:

VERSION 1.0

REVISION DATE:

19 MAY 2011

QA/QC:

MH, RB

**Pointe du Bois  
Spillway Replacement Project**

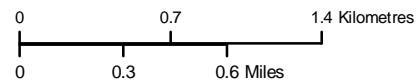
**Northern Leopard Frog Locations**

Figure:  
7.23





Coordinate System: UTM NAD 1983 Z15



**DATA SOURCE:**

MBHydro, JORO, ECOSTEM

**DATE CREATED:**

18 May 2011

**REVISION NO:**

Version 4

**CREATED BY:**

Joro Consultants Inc



**REVISION DATE:**

19 May 2011

**QA/QC:**

JORO, RB

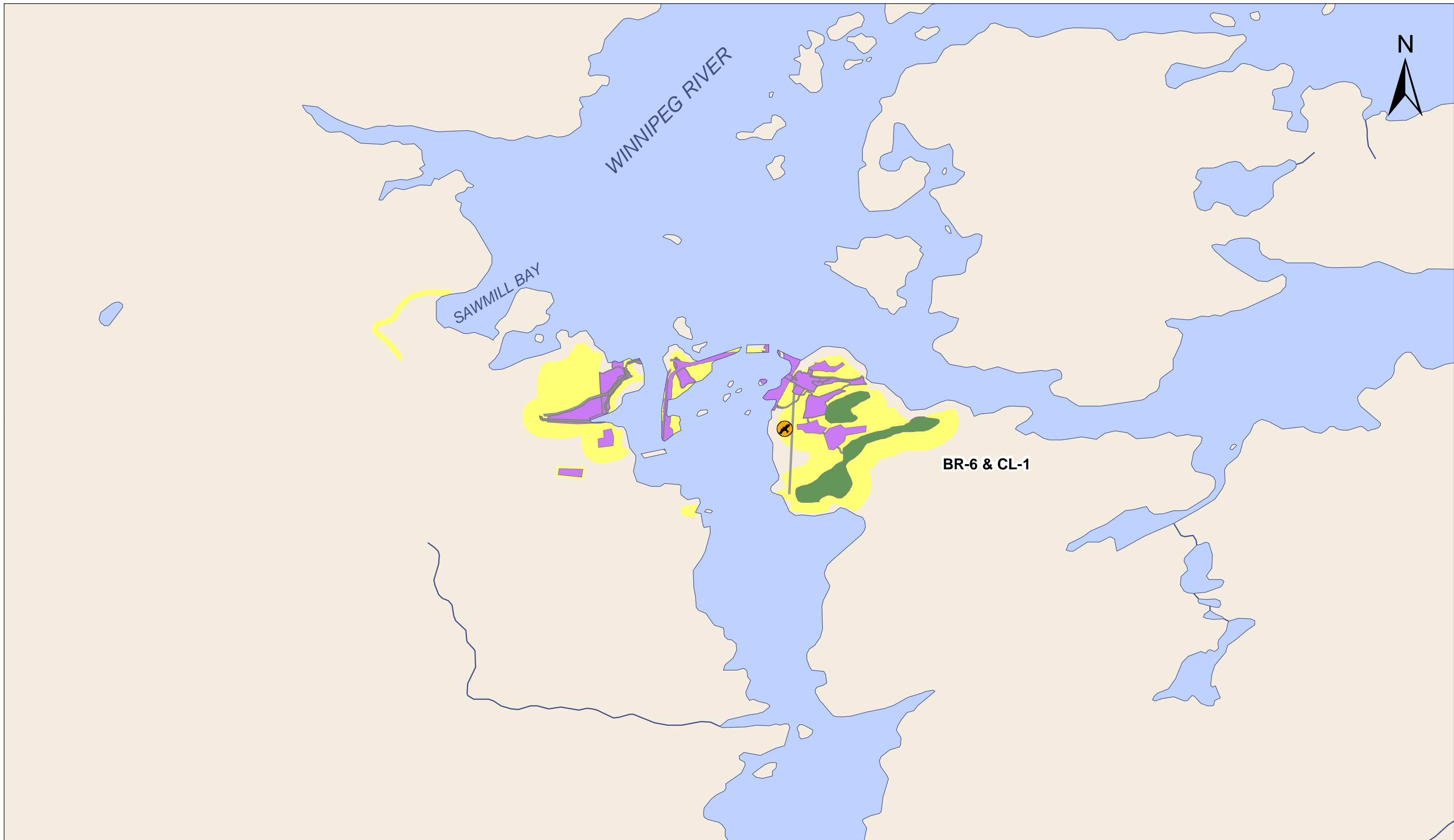
**Legend**

-  Project Footprint and Potential Disturbance Areas
-  Canada Warbler Habitat

**Pointe du Bois  
Spillway Replacement Project**

**Canada Warbler Habitat Near The Project Area**

**Figure:  
7.24**



Coordinate System: UTM NAD 1983 Z15

0 0.4 0.8 Kilometres  
 0 0.3 0.6 Miles

DATA SOURCE: MBHydro, JORO, ECOSTEM		
DATE CREATED: 18 May 2011	CREATED BY: Joro Consultants Inc	
REVISION NO: Version 3	REVISION DATE: 19 May 2011	QA/QC: JORO, RB

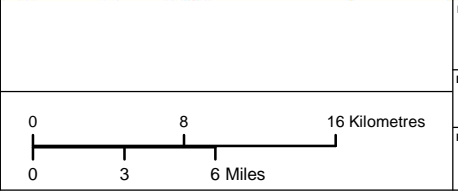
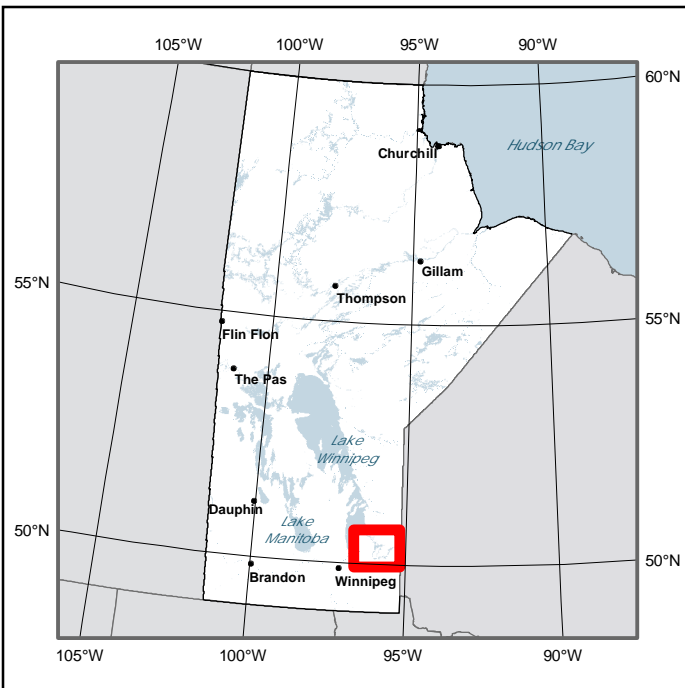
Legend		
Nest Location	Road	Infrastructure
	Transmission Line	Potential Disturbance Area
	Material Source Areas	

**Pointe du Bois  
Spillway Replacement Project**

**Eagle Nest Location within  
Potential Disturbance Area**

Figure:  
7.25





DATA SOURCE: Manitoba Hydro, Government of Canada, Province of Manitoba		
DATE CREATED: 24 MAY 2011	CREATED BY: HPP - GIS & Special Studies	
REVISION NO: VERSION 1.0	REVISION DATE: 06 JUNE 2011	QA/QC: EH, MWZ

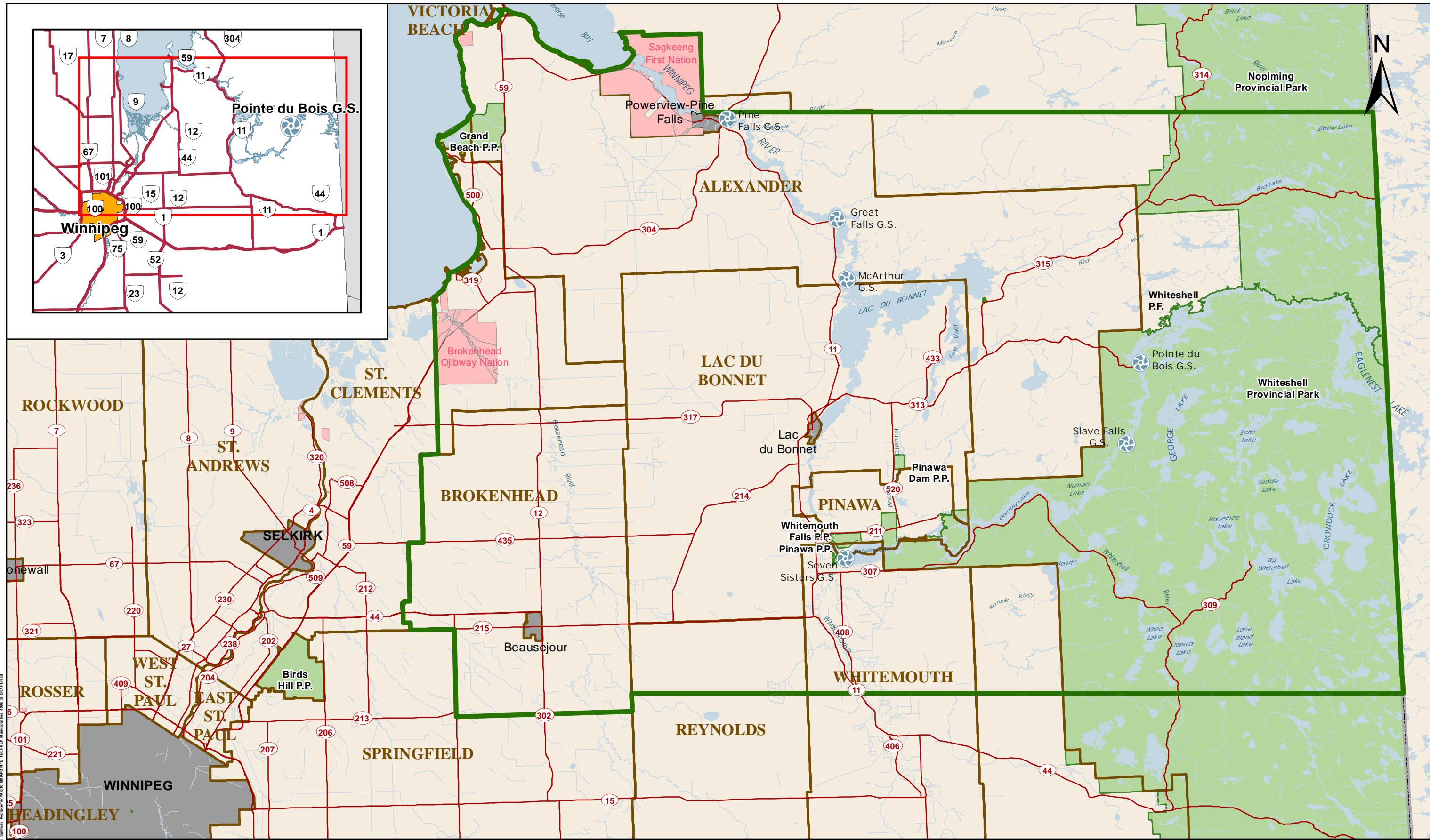
Legend			
	Generating Stations (G.S.)		Highways
	Regional Area		First Nations
	Local Area		Rail Line
	Provincial Parks		

**Pointe du Bois  
Spillway Replacement Project**

**Socio-Economic Study Area**

Figure:  
7.26





Coordinate System: UTM NAD 1983 Z14

0 5 10 Kilometres  
0 1 2 Miles

DATA SOURCE:  
MB Hydro, MMM Group, CanVec, MLI

DATE CREATED: 27 MAY 11  
CREATED BY: JK - MMM Group

REVISION NO: VERSION 5.0  
REVISION DATE: 10 JUNE 11  
QA/QC: EAH / MWZ

**Legend**

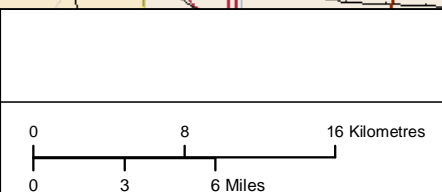
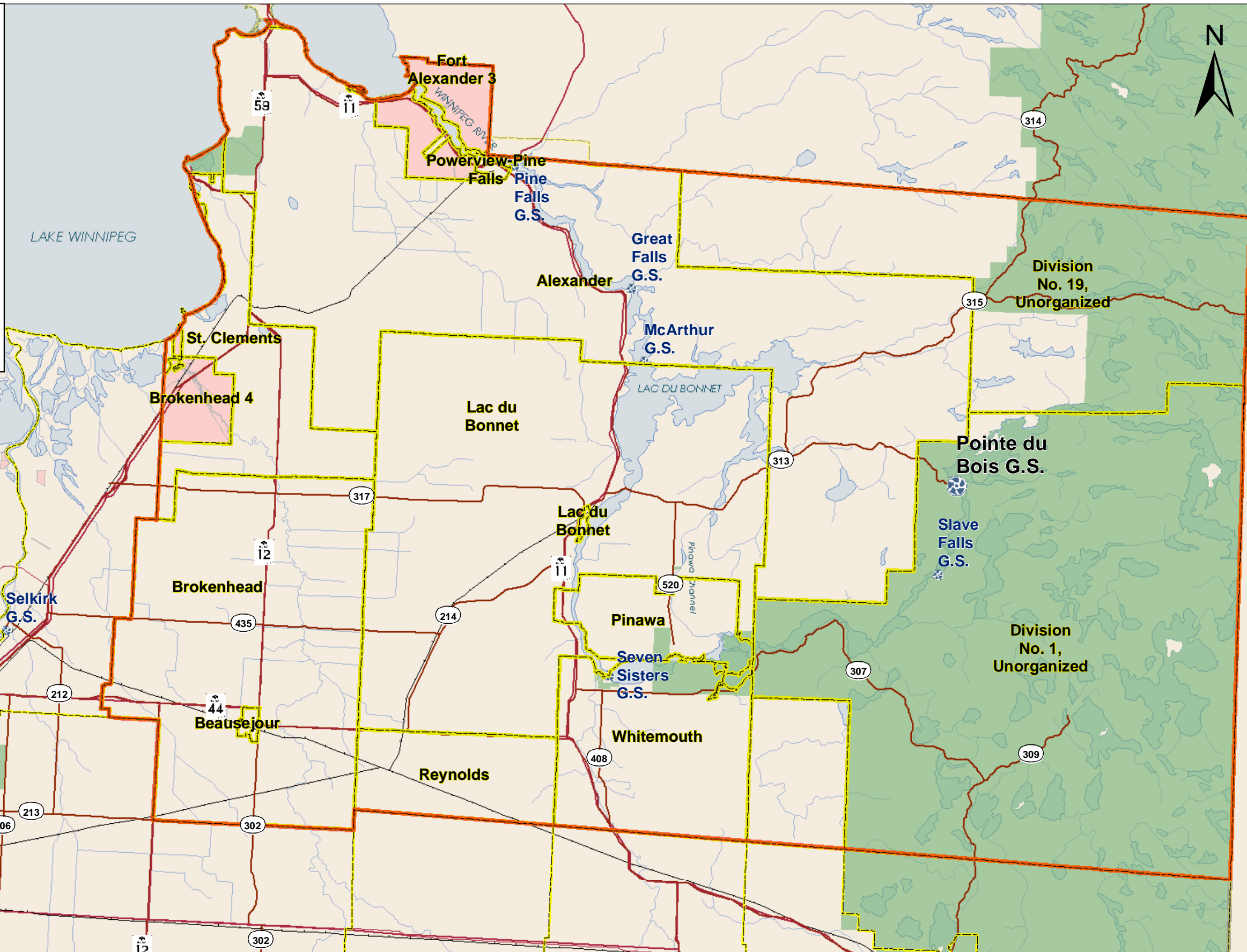
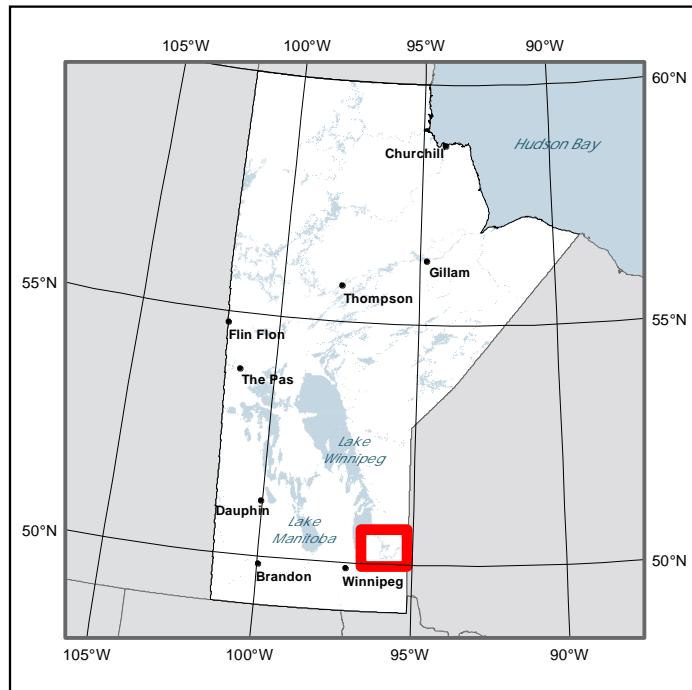
- Generating Station (G.S.)
- Road
- City/Town
- Rural Municipality
- Aboriginal Lands
- Provincial Park (P.P.)
- Regional Socioeconomic Study Area

**Pointe du Bois Spillway Replacement Project**

**Study Area Municipalities**

**Figure: 7.27**

File Location: U:\Projects\61702 - Pointe du Bois Spillway Replacement\Map\01\MMO\DCIN\TECHREP\_Municipalities\_400\_8\_DRAFT.mxd



DATA SOURCE: Manitoba Hydro, Statistics Canada, Province of Manitoba		
DATE CREATED: 02 JUNE 2011	CREATED BY: HPP - GIS & Special Studies	
REVISION NO: VERSION 1.0	REVISION DATE:	QA/QC:

Regional Socio-economic Study Area	Roads	Provincial Parks
Census Subdivisions - 2006	Railway	Reserve Land
Generating Stations (G.S.)		

**Pointe du Bois  
Spillway Replacement Project**

**Census Suidivisions in the  
Regional Study Area**

Figure:  
7.28