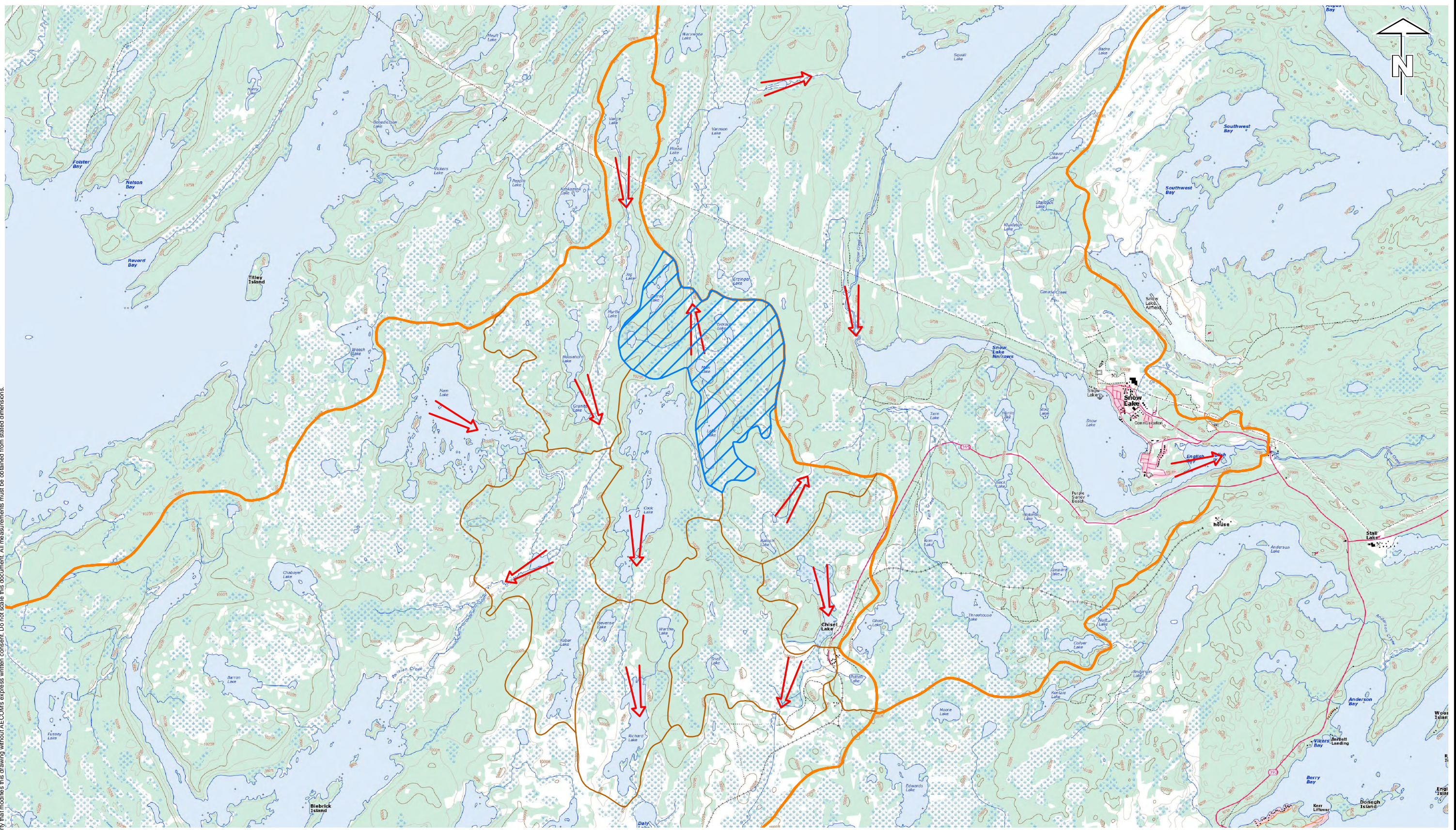


This drawing has been prepared for the use of AECOM's client and may not be used, reproduced or relied upon by third parties, except as agreed by AECOM and its client, as required by law or for use by governmental reviewing agencies. AECOM accepts no responsibility, and denies any liability whatsoever, to any party that modifies this drawing without AECOM's express written consent. Do not scale this document. All measurements must be obtained from stated dimensions.



SCALE 1:75000
 0 750 1500 m
 UTM ZONE 14 NAD83
 NTS MAP SHEET 62K16

-  PFRA GROSS WATERSHED BOUNDARY
-  LALOR MINE WATERSHED BOUNDARY
-  INTERPOLATED WATERSHED BOUNDARY
-  SURFACE WATER FLOW DIRECTION

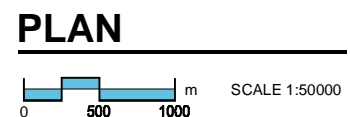
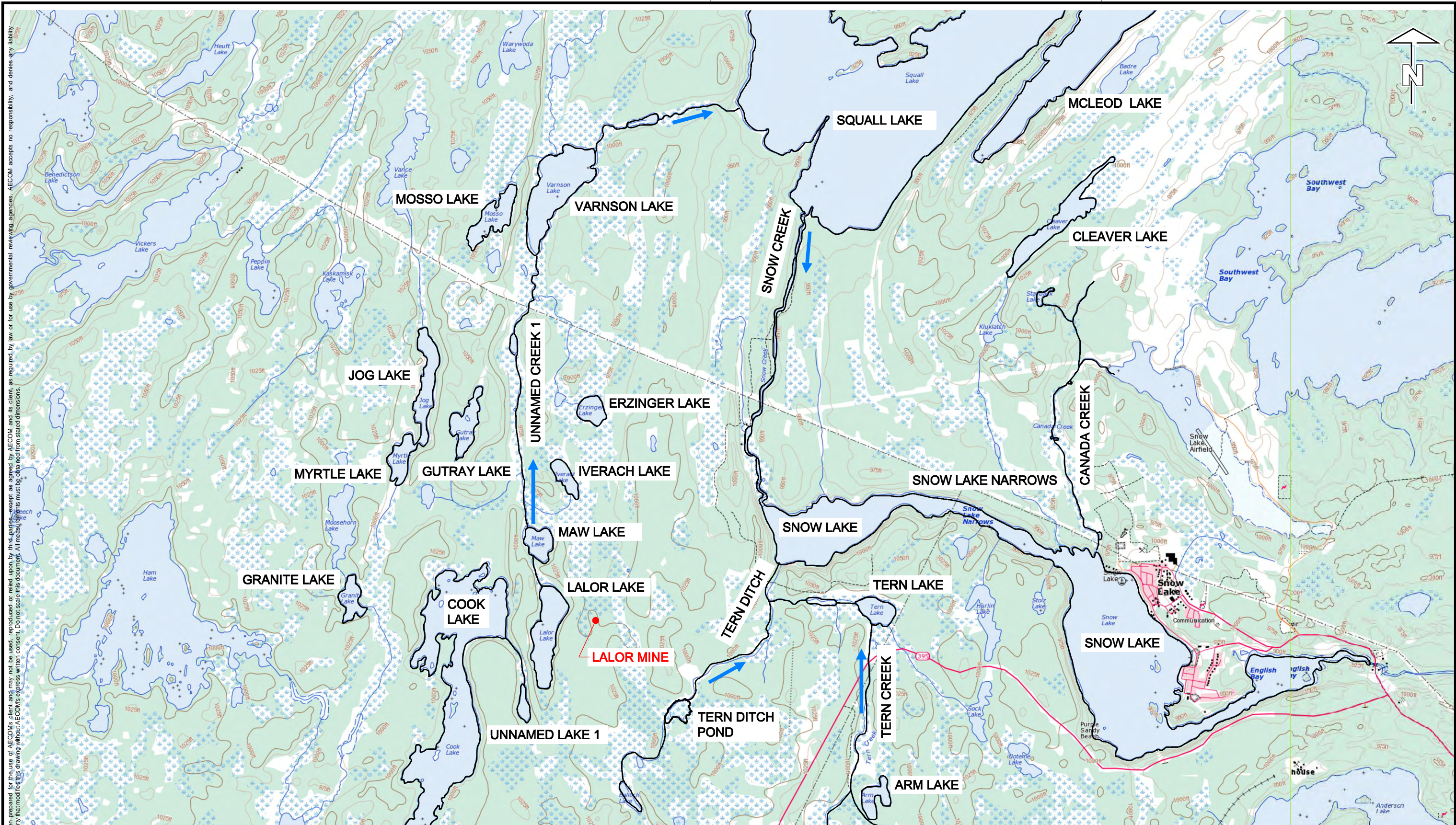
Hudson Bay Mining and Smelting Co., Limited
 Lalor Mine Environment Act Proposal

Regional Surface Water Flow Directions



Figure - 18

ISS/REV: 0A
 AECOM FILE NAME: 60212403-02-H-F12-R0X.dwg
 Saved By: cloustonec
 PLOT: 12/03/26 4:56:59 PM
 B SIZE 11" x 17" (279.4mm x 431.8mm)



LEGEND

← FLOW DIRECTION

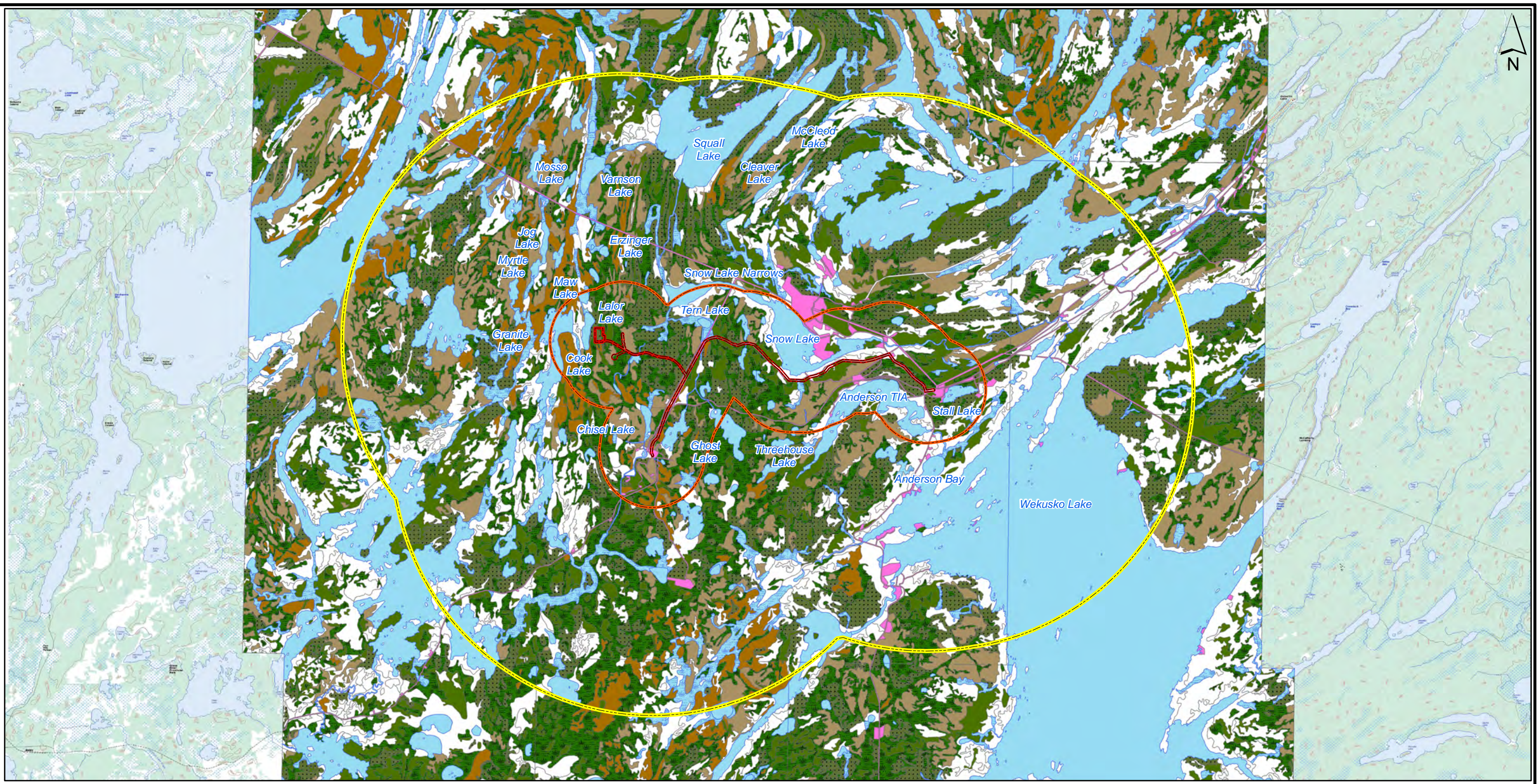
Hudson Bay Mining and Smelting Co., Limited
 Lalor Mine Environment Act Proposal

Waterbodies Surrounding the Lalor Mine



Figure - 19

A SIZE 8.5" x 11" (215.9mm x 279.4mm)
 PLOT: 12/03/27 4:04:15 PM
 SAVED BY: cloustonc
 AECOM FILE NAME: GIS-2012-03-27-Vegetation Analysis-60212403
 This drawing has been prepared for the use of AECOM's client and may not be used, reproduced or relied upon by third parties, except as agreed by AECOM and its client, as required by law or for use by governmental reviewing agencies. AECOM accepts no responsibility, and denies any liability whatsoever, to any party that modifies this drawing without AECOM's express written consent. Do not scale this document. All measurements must be obtained from stated dimensions.



Cover Classes	Covertypes and Percentage	Jack Pine, 71-100%	Disturbed
Covertypes not in Project Site	Black Spruce, 71-100%	Jack Pine, 40-70% w. spruce	Drainage Ditches
	Black Spruce, 40-70% w. Jack Pine	Treed Muskeg, w. Black Spruce	Beaver Flood
			Water

1,500 0 1,500 3,000
 m 1:150,000
 Projection: UTM Zone 14U
 Datum: CSRS NAD83

Project Site
 Project Area
 Project Region

Hudson Bay Mining and Smelting Co., Limited
 Lalor Mine Environment Act Proposal

Vegetation Regional Analysis



Figure - 20