

This drawing has been prepared for the use of AECOM's client and may not be used, reproduced or relied upon by third parties, except as agreed by AECOM and its client, as required by law or for use by governmental reviewing agencies. AECOM accepts no responsibility, and denies any liability whatsoever, to any party that modifies this drawing without AECOM's express written consent. Do not scale this document. All measurements must be obtained from stated dimensions.

SCALE: NTS
 IMAGE SOURCE: GOOGLE EARTH PRO 2010



- LEGEND**
- LALOR MINE SURFACE CONSTRUCTION
 - LALOR AEP SURFACE CONSTRUCTION

NOTE : MICROFILTRATION UNIT TO BE INSTALLED WITHIN WATER TREATMENT PLANT BUILDING

Hudson Bay Mining and Smelting Co., Limited
 Lalor Mine Environment Act Proposal

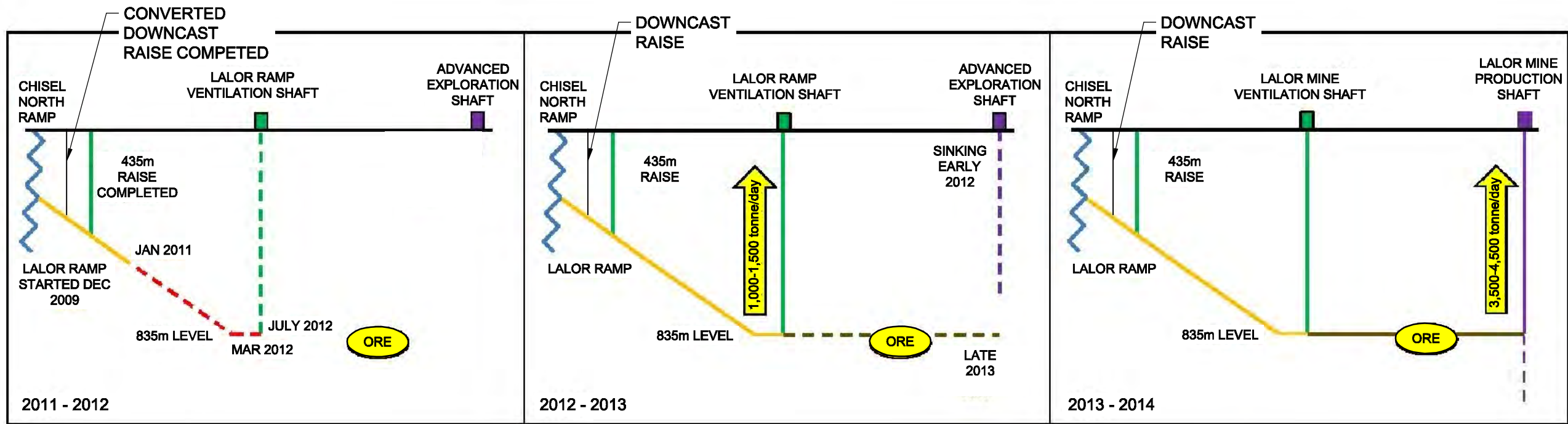
Lalor Mine Site Plan



Figure - 06

ISS/REV: 0A
 AECOM FILE NAME: 60212403-02-H-F04-R0X.dwg
 Saved By: cloustonec
 PLOT: 12/04/30 1:21:26 PM
 B SIZE 11" x 17" (279.4mm x 431.8mm)

This drawing has been prepared for the use of AECOM's client and may not be used, reproduced, or relied upon by third parties, except as agreed by AECOM and its client, as required by law or for use by governmental reviewing agencies. AECOM accepts no responsibility, and denies any liability whatsoever, to any party that modifies this drawing without AECOM's express written consent. All measurements must be obtained from stated dimensions.



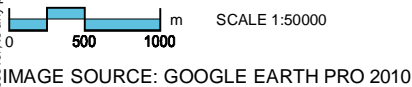
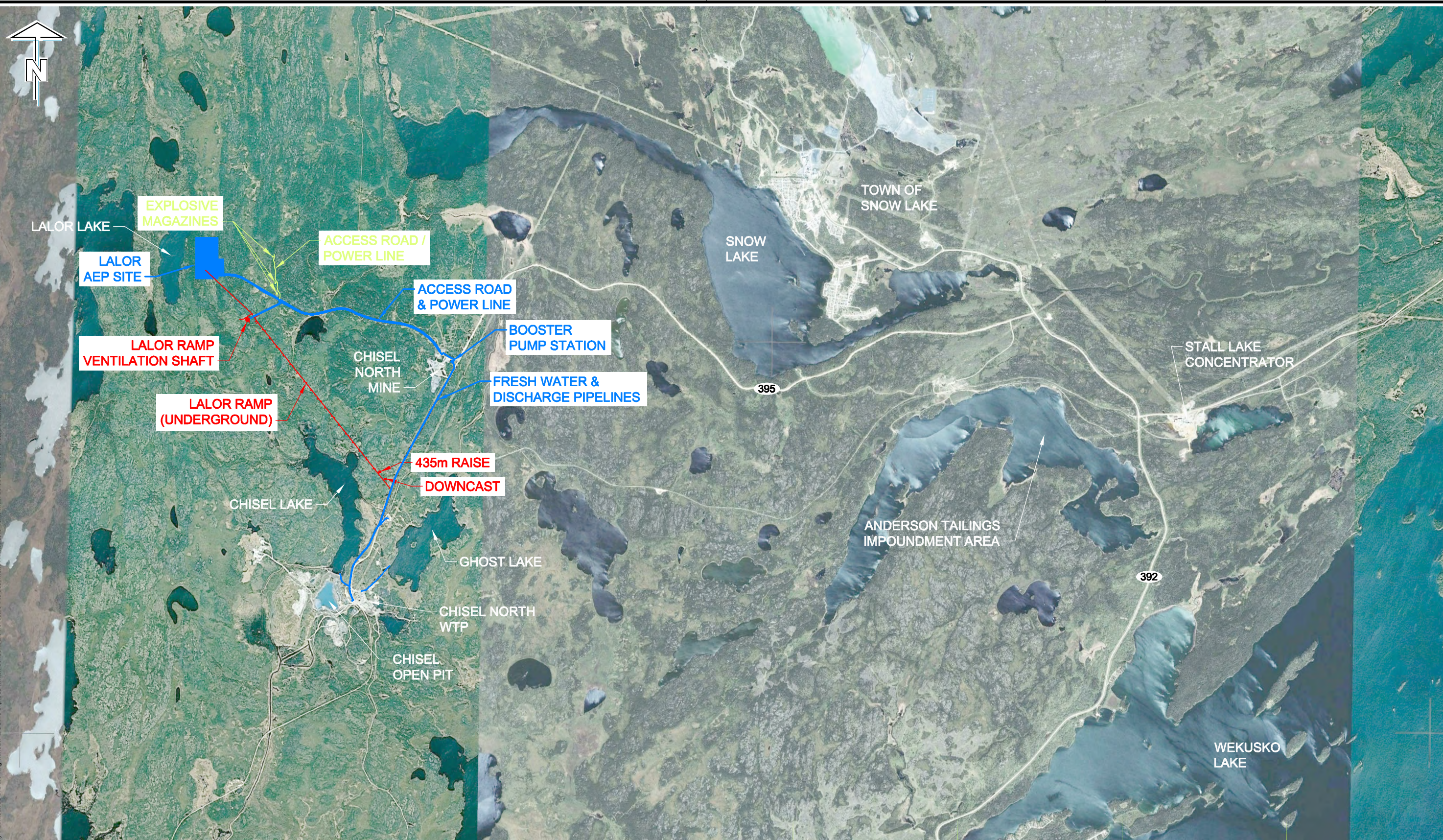
Hudson Bay Mining and Smelting Co., Limited
 Lalor Mine Environment Act Proposal

Lalor Mine Development Phases



Figure - 07

This drawing has been prepared for the use of AECOM's client and may not be used, reproduced, or relied upon by third parties, except as agreed by AECOM and its client, as required by law, or for use by governmental reviewing agencies. AECOM accepts no responsibility, and denies any liability whatsoever, to any party that modifies this drawing without AECOM's express written consent. All measurements must be obtained from stated dimensions.



NOTE:

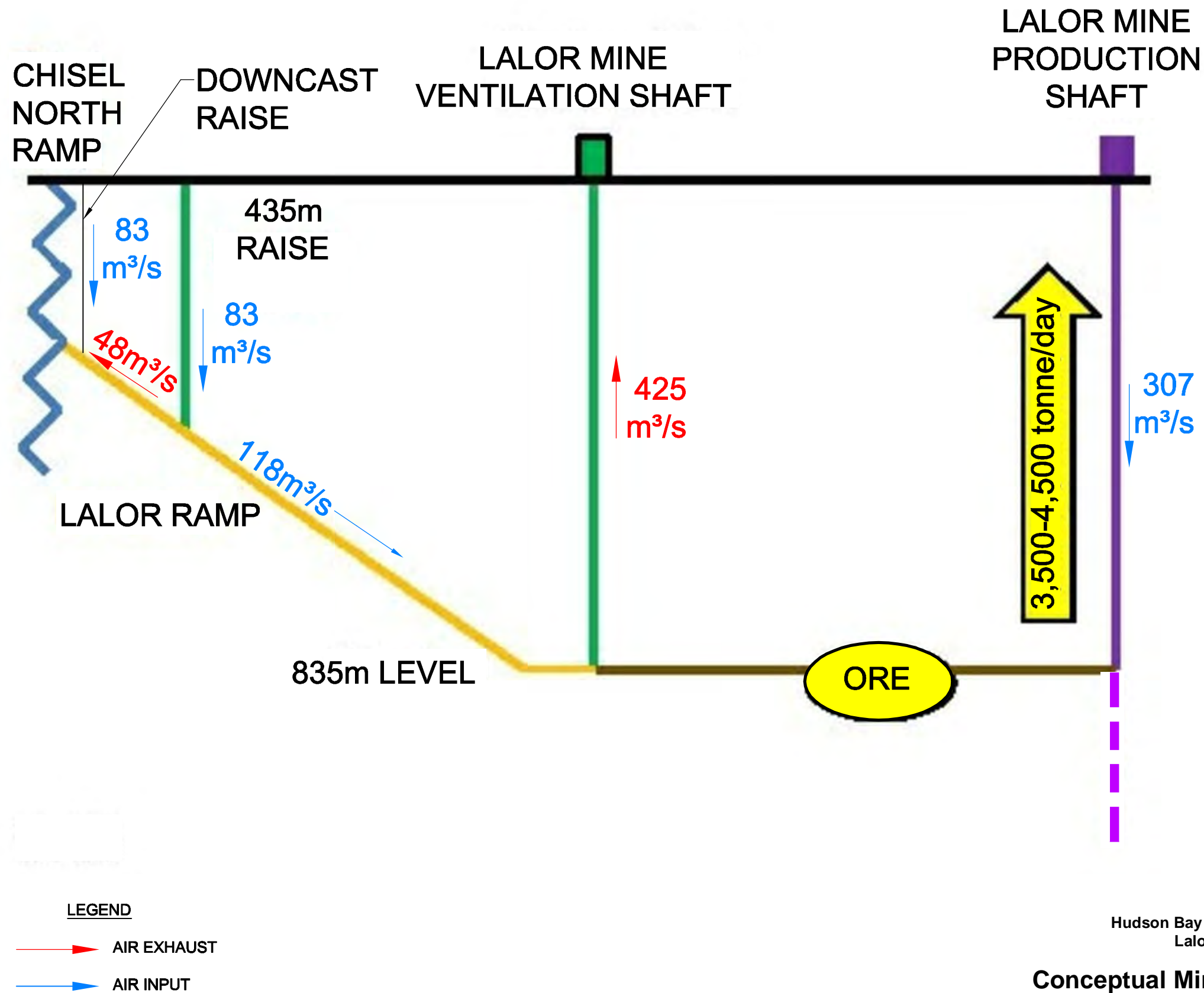
- LALOR RAMP SURFACE COMPONENTS
- LALOR AEP SURFACE COMPONENTS
- EXPLOSIVE MAGAZINES AND ACCESS ROAD

Hudson Bay Mining and Smelting Co., Limited
Lalor Mine Environment Act Proposal

Location of Lalor Exploration Projects and Support Facilities



This drawing has been prepared for the use of AECOM's client and may not be used, reproduced or relied upon by third parties, except as agreed by AECOM and its client, as required by law or for use by governmental reviewing agencies. AECOM accepts no responsibility, and denies any liability whatsoever, to any party that modifies this drawing without AECOM's express written consent. Do not scale this document. All measurements must be obtained from stated dimensions.

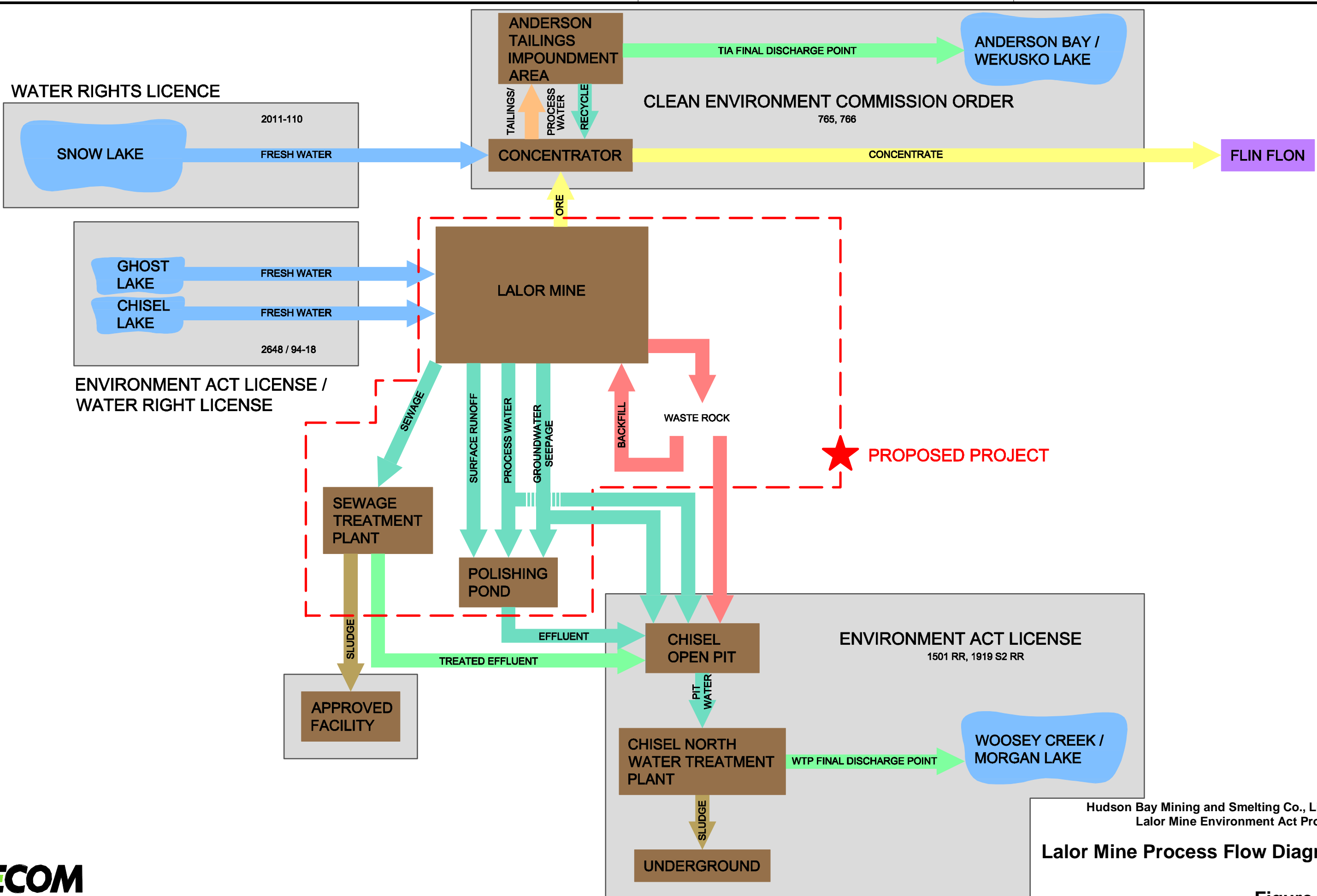


Hudson Bay Mining and Smelting Co., Limited
 Lalor Mine Environment Act Proposal

Conceptual Mine Ventilation Circuit



ISS/REV: 0A
 AECOM FILE NAME: 60212403-02-H-F06-R0X.dwg
 Saved By: cloustonec
 PLOT: 12/04/23 11:16:44 AM
 B SIZE 11" x 17" (279.4mm x 431.8mm)
 This drawing has been prepared for the use of AECOM's client and may not be used, reproduced, or relied upon by third parties, except as agreed by AECOM and its client, as required by law or for use by governmental reviewing agencies. AECOM accepts no responsibility, and denies any liability whatsoever, to any party that modifies this drawing without AECOM's express written consent. All measurements must be obtained from stated dimensions.

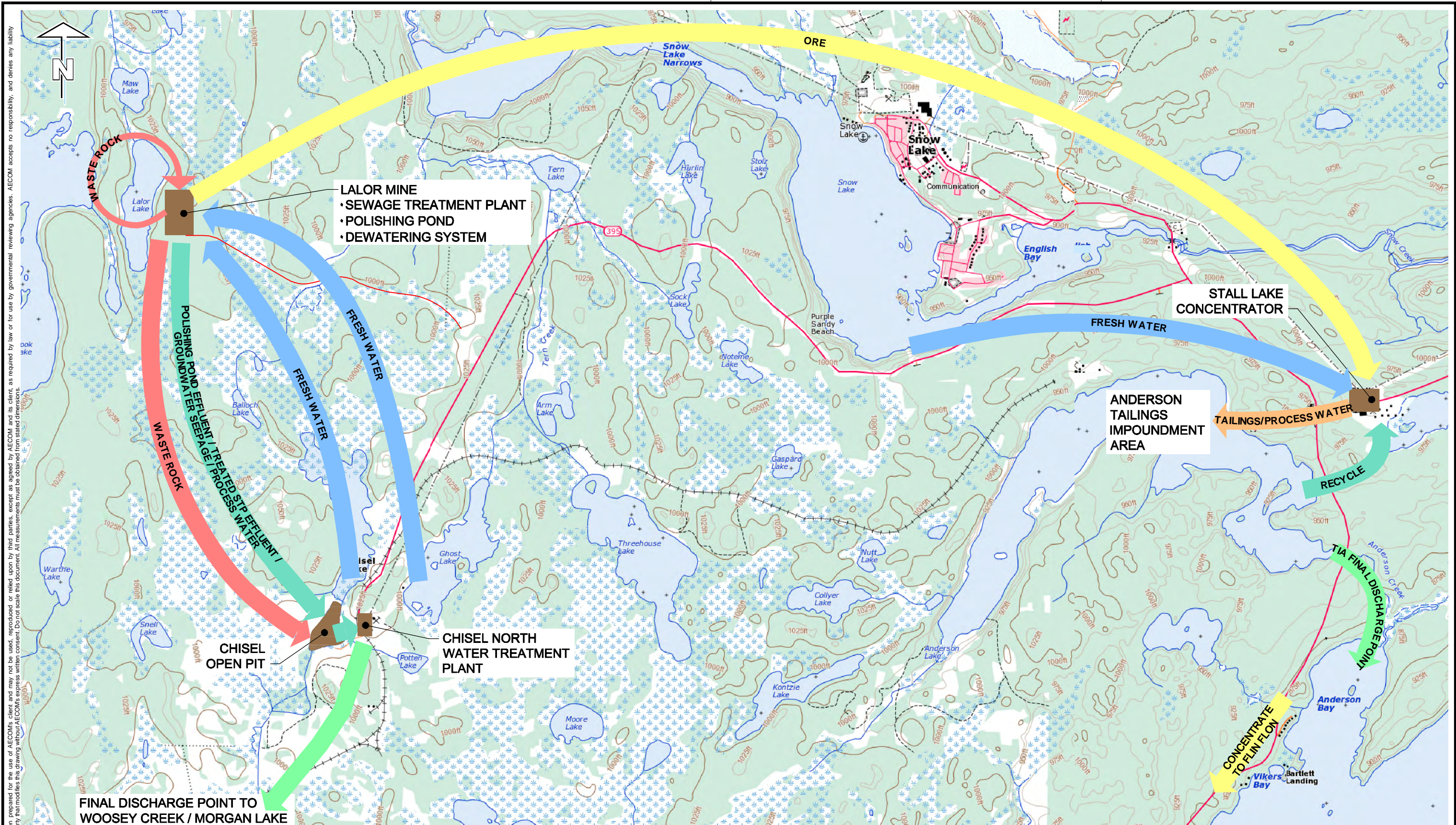


Hudson Bay Mining and Smelting Co., Limited
 Lalor Mine Environment Act Proposal
Lalor Mine Process Flow Diagram

Figure - 10



ISS/REV: 0A
AECOM FILE NAME: 60212403-02-H-F07-R0X.dwg
Saved By: cloustonc
PLOT: 12/04/23 11:19:18 AM
B SIZE 11" x 17" (279.4mm x 431.8mm)



Hudson Bay Mining and Smelting Co., Limited
Lalor Mine Environment Act Proposal

Project Inputs and Outputs



Figure - 11