



P.O. Box 7950 Stn Main • Winnipeg Manitoba Canada • R3C 0J1
Telephone/ N° de téléphone: (204) 360-4394 • Fax/ N° de télécopieur: (204) 360-6167
SJohnson@hydro.mb.ca

January 14, 2013

Elise Dagdick
Environmental Approvals Branch
Manitoba Conservation and Water Stewardship
Suite 160, 123 Main Street
Winnipeg, MB R3C 1A5

Dear Ms. Dagdick:

Re: File 5611.00 Dorsey to Portage South Transmission Line Environmental Assessment Report

This letter is in response to your letter of December 20, 2012, requesting additional information on the above project.

Required Additional Information:

1. The proposal indicates the proposed transmission line right-of-way (ROW) would be located on primarily private land. Identify the ownership of land traversed by the ROW that is not private land, municipal ROW, or a river crossing.





Response: All land traversed by the ROW is either private land, municipal ROW, or a river crossing.

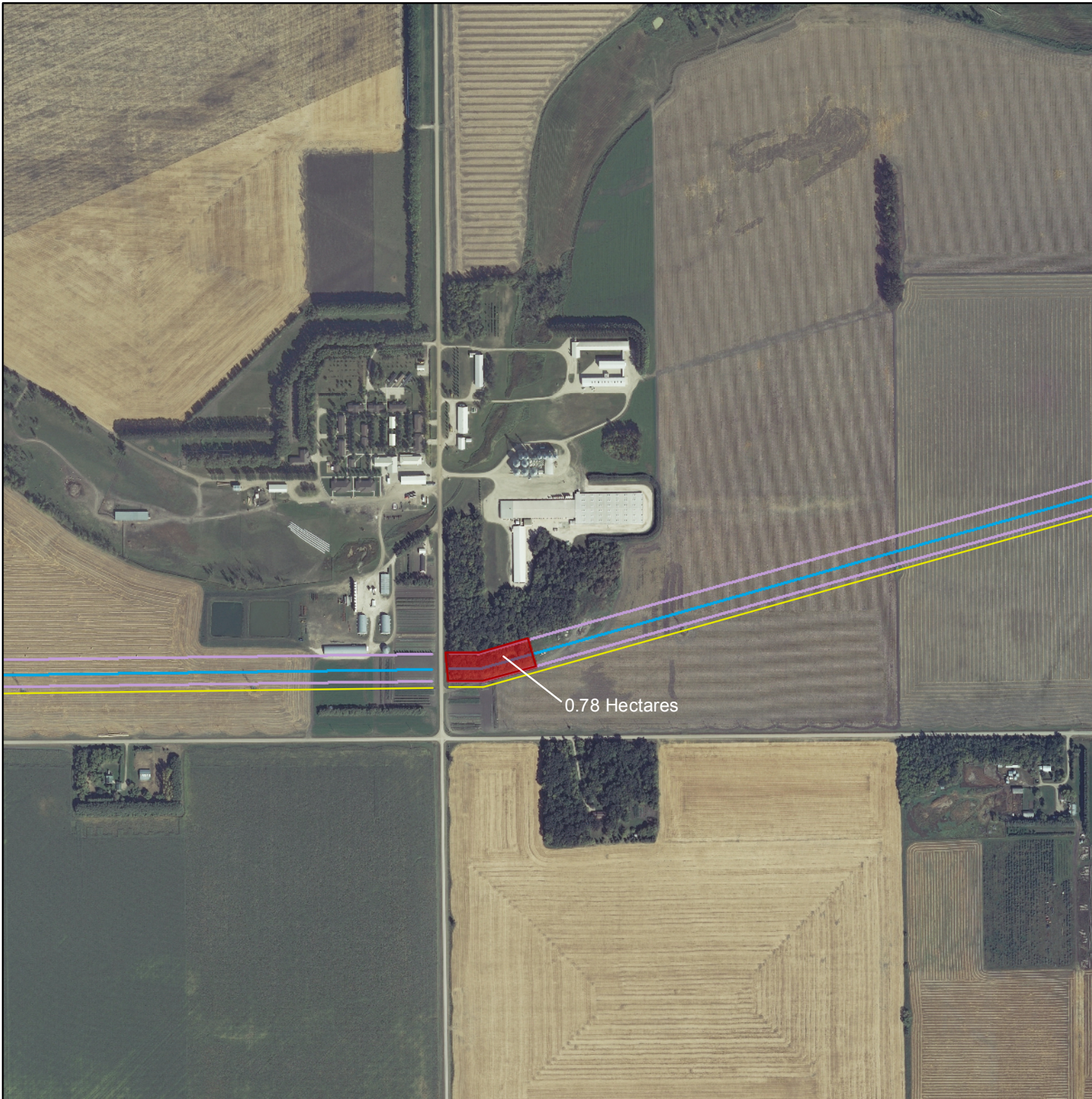
2. The proposal indicates the proposed ROW was minimized through native prairie/tame grassland, wetlands, and forests. Provide a clear indication of whether any of these habitat types (not including shelter belts or river corridors) are traversed by the proposed ROW and so, what mitigation measures are proposed for these habitats.

Response: There is a small portion of the proposed ROW that crosses a small forested area (<1ha) within the Sunny Side Colony Property (see attached map). The remainder of ROW habitat is agricultural land and river corridors.

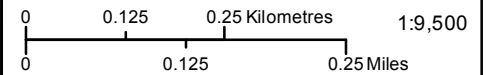
3. Describe the potential impacts of electromagnetic frequencies (EMFs) from the transmission line and converter stations on the health and well being of people and wildlife. Include the potential cumulative impacts of dual lines on human and animal health, as well as on sensitive electronic equipment.

Dorsey to Portage South

-  Existing D12P Trans Line
-  D83P ROW
-  D83P Proposed Trans Line
-  Forest area to be removed



Coordinate System: UTM Zone 14 NAD 83
Data Source: MBHydro, ProvMB, NRCan
Date Created: January 15, 2013



Forest Removal

Removal of trees
from Sunnyside Colony



P.O. Box 7950 Stn Main • Winnipeg Manitoba Canada • R3C 0J1
Telephone/ N° de téléphone: (204) 360-4394 • Fax/ N° de télécopieur: (204) 360-6167
SJohnson@hydro.mb.ca

Response:

Please find attached a brochure Manitoba Hydro has developed explaining the health effects of Alternating Current Electric and Magnetic Fields. In addition to better understand the effects of EMF on sensitive electronic equipment, GPS Manitoba Hydro commissioned two studies by independent surveyors using various types of GPS technologies directly beneath the two existing Bipole I and II dc transmission lines located in Manitoba's Interlake region. The tests showed no interference with any type of GPS or Global Navigation Satellite System (GNSS) technology tested, including RTK and other correction systems. The GPS receivers tested continued to operate without interruption at centimeter accuracies regardless of the presence of the dc transmission lines. In theory, the presence of the transmission towers themselves might occasionally attenuate satellite signals related to GPS systems (as do trees), but this was not observed during the testing. Furthermore, a limited series of measurements under a nearby 230-kv ac transmission line also did not affect the performance of the GPS receivers.

4. Provide information on the types of herbicides to be used in the ROW, their frequency of application, related toxicity and adverse health effects upon exposure, and potential impacts to surrounding farms, the environment, and wildlife.

Response: The majority of the line will be on agricultural land. It will be the adjacent landowners who will be responsible for vegetation management; therefore Manitoba Hydro will not use herbicides as part of the line maintenance program for this ROW.

In closing, should you require more information or have any questions, please contact me at 360-4394.

Yours truly,

A handwritten signature in cursive script that reads 'Shannon Johnson'.

Shannon Johnson, Manager
Licensing & Environmental Assessment Department,
Transmission Planning & Design
Transmission

Bipole III

Bipole III Transmission Project: A Major Reliability Improvement Initiative Alternating Current Electric and Magnetic Fields (EMF)

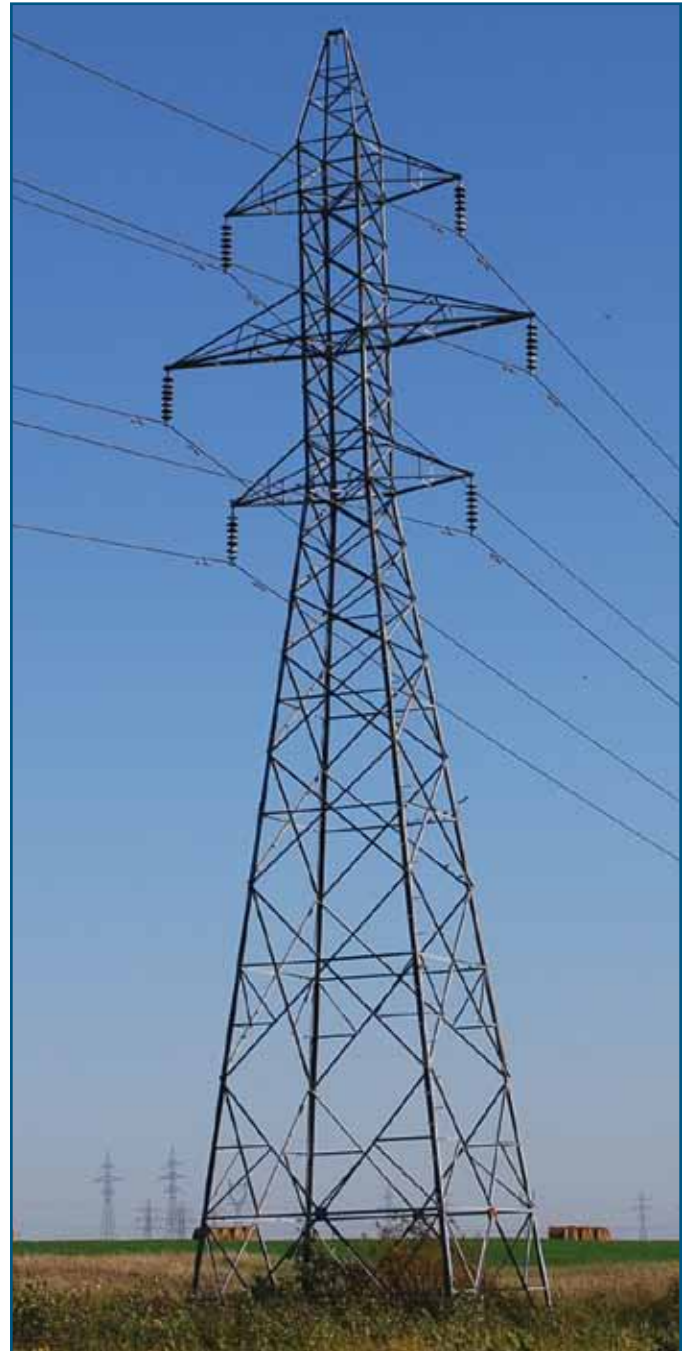
Manitoba Hydro is proposing to build a new direct current (DC) transmission line, known as Bipole III, to improve system reliability. The new line will link the northern power generating complex on the Lower Nelson River with the delivery system in southern Manitoba. In addition to the DC transmission line, the Bipole III Transmission Project will include the construction of a 230 kV alternating current (AC) transmission line between the existing 230 kV switchyard at Long Spruce Generating Station and a new 230 kV switchyard at the site of the new northern converter station; and two 230 kV AC transmission lines to connect the existing 230 kV switchyard at Henday Converter Station to the new 230 kV switchyard at the new northern converter station.

The proposed AC transmission lines will produce AC electric and magnetic fields (EMF) that oscillate at a frequency of 60 Hertz (Hz). This brochure describes electric and magnetic fields, the health research that has been conducted, and the conclusions offered by various scientific agencies on AC EMF and effects on human health.

What are AC electric and magnetic fields?

Our electrical system carries power from generating stations to our homes by way of transmission lines, substations, and distribution lines. Each component of this system – from the transmission lines that carry the electricity, to the appliances that use the electricity – produces electric and magnetic fields in the extremely low frequency (ELF) range that includes 60 Hz¹. A field describes the properties of the space surrounding an object due to the characteristics of the object. A temperature field, for example, surrounds a hot object, just as electric and magnetic fields surround electrical objects.

¹ELF EMF is different from radiofrequency fields, such as those produced by mobile phones and radio and TV stations.



There are differences between electric fields and magnetic fields. Electric fields are due to a system's voltage and are measured in kilovolts per meter (kV/m). Magnetic fields are due to the flow of electrical current and are measured in milligauss (mG). Most objects partially block electric fields, including trees, cars and buildings, while magnetic fields are not shielded by these objects. Since magnetic fields are more pervasive, magnetic fields have been the focus of health research.

The EMF levels measured near any source depend on a number of factors, but largely on the distance at which the measurement is taken. Both electric and magnetic field levels decrease with increasing distance from the source, just as the heat from a candle or stove decreases as you move farther away. The box below describes the general properties of different EMF sources.



Some EMF sources and their general properties

Appliances. Appliances, such as microwave ovens, vacuum cleaners, and hand-held appliances tend to produce the highest EMF levels indoors. Compared to power lines, EMF levels from appliances drop off more rapidly with distance. A microwave oven, for example, produces a magnetic field of approximately 200 mG at 6 inches and 4 mG at 1 foot.

Power lines. The EMF levels associated with an AC power line depend on the configuration of the line's conductors, the line's voltage, the amount of current the line is carrying, distance from the

conductors, etc. The EMF levels under AC transmission lines are higher than the levels under the distribution lines that run down local streets. Transmission lines are located on dedicated right-of-ways, and are typically farther away from residences.

Substations. Similar to appliances, substation equipment is configured in such a way that field levels drop off quickly with distance. At the fence surrounding a substation, the EMF levels associated with the substation's equipment are typically within the range of background levels, except where the transmission lines connect to the substation. Background levels are the EMF levels typically measured in homes or offices away from appliances and other major EMF sources.

What levels of magnetic fields are most people exposed to?

The answer to this question is difficult to answer precisely because, in our modern day society, we are all exposed for varying amounts of time to innumerable sources of magnetic fields throughout the day. The highest levels are recorded very close to electrical sources which range from dozens to hundreds of milligauss (mG). It is generally agreed, that if the average of a person's magnetic field exposures throughout an entire day is measured, most persons are exposed to levels in the range of 1 to 2 mG. While this is our average level of exposure, we are exposed to both higher and lower field levels throughout the day.

Has research been conducted on the potential for AC electric and magnetic fields to affect health?

Yes. A large body of research has been conducted in Canada and other countries for almost 40 years on a wide variety of topics. This research includes:

- **Epidemiology studies.** Observational studies of people, which evaluate the relationship between estimated magnetic field exposures and diseases.
- **Experimental studies.** This includes studies of laboratory animals exposed to high EMF levels for long periods of time and studies of cells and tissues exposed to EMF in the laboratory.

What have scientific agencies concluded about the research on AC electric and magnetic fields and human health?

Numerous scientific and health agencies have evaluated this body of research, including the World Health Organization (WHO), the International Agency for Research on Cancer (IARC), and the Health Protection Agency (HPA) of Great Britain. In Canada, the topic has been evaluated by the Federal Provincial Territorial Radiation Protection Committee (FPTRPC). The FPTRPC is an intergovernmental, Canadian committee assembled to harmonize the standards and practices for ELF EMF within federal, provincial and territorial jurisdictions. Health Canada refers to the FPTRPC as the authority on issues related to EMF. The FPTRPC established an ELF Working Group to carry out periodic reviews, recommend appropriate actions and provide position statements that reflect the common opinion of intergovernmental authorities.

The conclusions of these scientific agencies have been generally consistent. Overall, they concluded that the research does not show that electric or magnetic fields are a known or likely cause of any disease, including cancer. They also concluded that some statistical data suggests a relationship between childhood leukemia and rare exposure to high magnetic field levels, although the uncertainty associated with these findings and the lack of support from experimental studies does not support a true relationship. Please consult the documents listed at the end of this handout for more details on the agencies' conclusions.

What specifically did the FPTRPC conclude?

The Canadian committee concluded that, "there is insufficient scientific evidence showing exposure to EMFs from power lines can cause adverse health effects such as cancer" (<http://hc-sc.gc.ca/ewh-semt/radiation/fpt-radprotect/emf-cem-eng.php>). Also, the Manitoba Clean Environment Commission developed a Health and EMF Expert's Consensus Statement on the Human Health Effects of ELF EMF in 2001, which concluded that "The weight of scientific evidence does not support the conclusion that extremely low frequency EMFs such as those produced by power lines are a cause of adverse effects on human health." (http://www.cecmanitoba.ca/Reports/PDF/CEC_EMF_Consensus_Report.pdf).

Are there any standards or guidelines to limit exposure to AC electric and magnetic fields in Canada?

Canada does not have any national, territorial or provincial standards or guidelines related to EMF. However, Canada supported the application of the precautionary principle in the assessment of environmental factors in the late 1990s, at about the same time as

Europe. The principle states that, in areas of scientific uncertainty, steps should be taken to reduce exposures that are proportional to the perceived level of risk. This principle has been supported by the WHO, which recommends low-cost measures to reduce EMF exposure such as constructing electrical infrastructure in ways that reduce EMF levels. Such measures might include adjusting the design of adjacent lines to minimize magnetic fields.

What does Health Canada recommend?

Health Canada states the following: "You do not need to take action regarding typical daily exposures to electric and magnetic fields at extremely low frequencies. There is no conclusive evidence of any harm caused by exposures at levels normally found in Canadian living and working environments." (<http://www.hc-sc.gc.ca/hl-vs/iyh-vsv/environ/magnet-eng.php>).

Do AC electric and magnetic fields affect animals or plants?



Numerous research programs have been conducted to study the effects of EMF on wild and domesticated animals; the largest of these research programs was conducted with cows at the University of McGill in Quebec. Overall, this research has not found any relationship between EMF and the health, behavior or productivity of animals, including cows, pigs and sheep. Furthermore, studies of crops and other plants have reported no adverse effects on growth or viability.

Can AC EMF cause audible noise or radio/TV interference?

Yes, these effects may be noticeable, particularly when crossing underneath a transmission line. These occur when the strength of the electric field at points on the conductors' surface locally exceeds the insulating properties of air and tiny amounts of energy are released. This may be noticeable for AM radio or analog television pictures, but not for FM radio or cable television. Adherence to Canadian and Manitoba electrical codes and standards will minimize such effects.

For more information, please visit the following websites:

Canadian

Health Canada:

<http://www.hc-sc.gc.ca/hl-vs/iyh-vsv/enviro/magnet-eng.php>

BC Centre for Disease Control:

<http://www.bccdc.ca/healthenv/Radiation/ElectromagRadiation/PowerLines.htm>

Canadian Cancer Society:

http://www.cancer.ca/Canada-wide/Prevention/Specific%20environmental%20contaminants/Electromagnetic%20fields.aspx?sc_lang=en#exposure

International

World Health Organization:

<http://www.who.int/peh-emf/about/en/>

This brochure was created by epidemiologists and biological scientists in the Health Sciences Practice of Exponent, a leading firm in scientific and engineering disciplines. © November 2009.

Exponent®