

OPEN HOUSES

OPEN HOUSE STORYBOARDS 1 THROUGH 7: ROUND 1

Goals of the Open House

Dorsey to Portage South Transmission Line Project

GOALS OF THE OPEN HOUSE

- Introduce members of the environmental assessment team.
- Provide a description of the Project and the environmental assessment process.
- Address any concerns that you may have with the Project.
- Describe how your input will feed into the process.
- Gather local knowledge for input into site selection process.
- Inform you of next steps in this process.



Project Highlights

Dorsey to Portage South Transmission Line Project

Manitoba Hydro has identified a need to enhance its transmission system in southwest Manitoba.

The proposed Project is one component required to improve this system.

The Project would originate at the Dorsey Station, located northwest of Winnipeg near the community of Rosser, Manitoba. It would terminate at the Portage South Station located southeast of Portage la Prairie.



PROJECT HIGHLIGHTS

- The Project would include a 230 kilovolt (Kv) transmission line and would be about 70 km long.
- The Project would pass through the rural municipalities of Portage la Prairie, Cartier, St. Francois Xavier and Rosser.
- Construction anticipated to be undertaken from October 2014 to April 2015.
- The scheduled in-service date is April 2015.

The alternative route selection and environmental assessment process is scheduled for completion in April 2012 and an environmental impact statement will be submitted to Manitoba Conservation in May 2012.



Regulatory Process and Schedule

Dorsey to Portage South Transmission Line Project

REGULATORY PROCESS

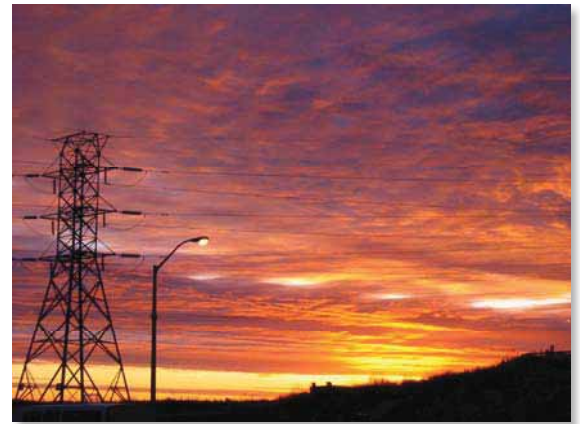
The Project would be a Class 2 development under Regulation 164/88 of the *Environment Act* (Manitoba) which triggers environmental assessment and licensing requirements.

The process will be documented in an Environmental Impact Statement (EIS) that will accompany Manitoba Hydro's application for environmental licensing.

SCHEDULE

The site selection and environmental assessment process is scheduled for completion in April 2012.

The EIS will be submitted to Manitoba Conservation in May 2012.



Alternative Route Selection

Dorsey to Portage South Transmission Line Project

ALTERNATIVE ROUTE SELECTION

Manitoba Hydro has selected alternative routes through the review of biophysical, heritage and socio-economic components.

The review includes consideration of the following:

Airstrips	Aquatics
Agriculture	Heritage sites or areas
Communities and villages	Vegetation
Infrastructure	Wildlife
Local social and economic conditions	Cost
Residences	Design criteria

We are seeking input and comment from landowners, general public, First Nations, Metis and other stakeholders to assist in the selection of a preliminary preferred route.



Project Study Area and Alternative Routes

Dorsey to Portage South Transmission Line Project

Alternative Route A follows the existing transmission line, either to the north side of the existing line or to the south depending on the segment.

- Vacant right-of-way land would be available through much of this route, reducing the need for new clearing.
- Tower locations would be matched to the extent possible if the existing transmission line is followed.

Alternative Route B is comparable to Alternative Route A but provides:

- Alternative Assiniboine River crossing.
- Alternative Trans-Canada highway crossings.

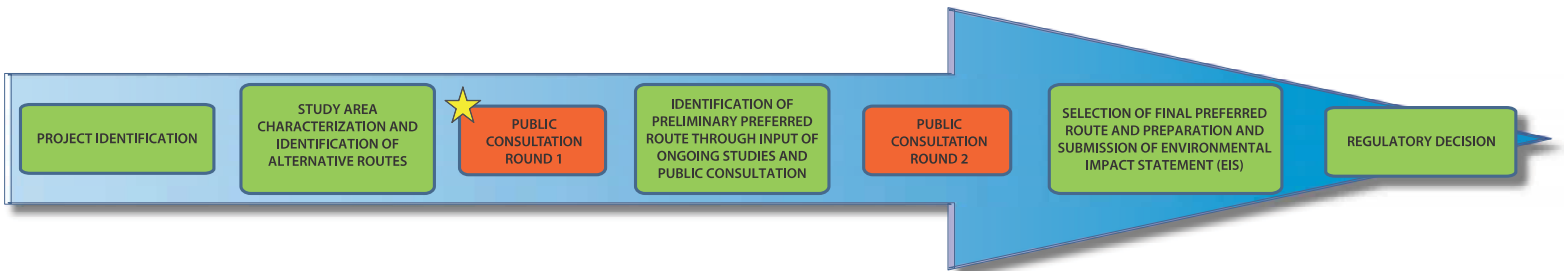
Alternative Route C offers an independent route alignment and alternate Assiniboine River and Trans-Canada Highway crossings.



Community and Public Consultation

Dorsey to Portage South Transmission Line Project

Consulting with communities, landowners and the public is a very important part of the planning process.



Consulting with communities, landowners and the public is a very important part of the planning process for determining a route which minimizes effects on people and the environment.

Information obtained from the public during open houses will assist in identifying a preferred route and in assessing the potential effects and mitigative measures that might be considered to offset any unavoidable effects.

This will help us to identify a route that is a balance of technical, biophysical, financial and socio-economic considerations.

- We are seeking input from:**
- Private landowners
 - Government agencies
 - Non-government agencies
 - Community representatives
 - First Nations
 - Metis
 - General public



Next Steps

Dorsey to Portage South Transmission Line Project

NEXT STEPS

- Follow-up from Round 1 Consultation
- Selection of preliminary preferred route
- Round 2 Consultation
- Submission of Environmental Impact Statement

If you have any questions, please feel free to contact:

James Matthewson
Senior Environmental Assessment Officer

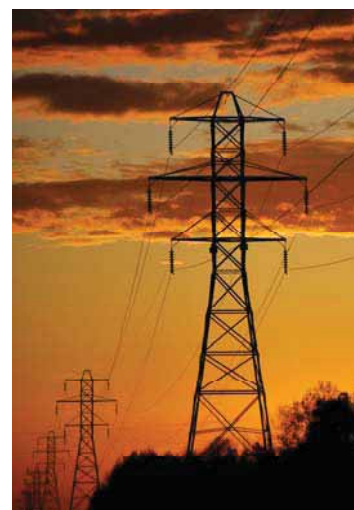
Email: jmatthewson@hydro.mb.ca

Call collect: 1-204-360-3119

David Block
Environmental Specialist

Email: dblock@hydro.mb.ca

Call collect: 1-204-360-7353



OPEN HOUSE STORYBOARDS 1 THROUGH 14: ROUND 2

Welcome

**Dorsey to Portage South
Transmission Line Project**

Dorsey to Portage South Transmission Line Project

Round 2



Existing D12P Transmission Line Angle Tower



Purpose of the Open House

Dorsey to Portage South Transmission Line Project

Purpose:

- Provide a venue for people to review the preferred route, to ask questions and voice their concerns
- Provide Project information to local residents on the Site Selection and Environmental Assessment (SSEA) process
- Discuss mitigation measures to minimize or avoid potential Project effects on people and the environment

Goals of Manitoba Hydro:

- Keep the public informed of Manitoba Hydro activities in the area and ensure concerns are identified and considered throughout the consultation process
- Receive and review comments on the preferred route
- Provide timely and informative responses to questions and concerns
- Be open and transparent throughout the approval process



Project Description

Dorsey to Portage South Transmission Line Project

Manitoba Hydro has identified a need to enhance its transmission system in southwest Manitoba. The proposed Dorsey to Portage South Transmission Line Project is one component required to improve this transmission system.

- The 230 kilovolt (kV) AC transmission line would be built north of an existing transmission line (D12P) and will be 64km (40 miles) long
- Most towers will be 32.2m (106 ft) in height and the average span between structures will be 400m (1,312 ft). At some locations such as the proposed double-circuit tower across the Assiniboine River, the towers will be higher
- The line would pass through the RMs of Portage la Prairie, Cartier, St. Francois Xavier and Rosser
- Construction would begin in the fall of 2014, with an in-service date of spring 2015



Site Selection Environmental Assessment

Dorsey to Portage South Transmission Line Project

The Project will undergo a Site Selection Environmental Assessment (SSEA) in order to meet licensing requirements and is considered a Class 2 development under *The Environment Act* (Manitoba). The process will be documented in an Environmental Impact Statement (EIS) which will be submitted to regulatory authorities in June 2012.

The SSEA process was initiated to identify several route alternatives and to determine a route that would minimize impacts on people and the environment while maximizing positive opportunities in the region.

The process has identified biophysical and socio-economic features in the area that might be affected by construction of the Project. Identification of the features took into account outcomes from consultation with landowners, local people and stakeholders.

Determination of the Preferred Route

Dorsey to Portage South Transmission Line Project

The Project team took into consideration the following route selection criteria:

- Public comments
- Distance from residences
- Land use
- Agriculture and farming practices
- Socio-economic concerns
- Heritage resources
- Existing infrastructure
- Technical and design features
- Aquatics
- Vegetation
- Wildlife

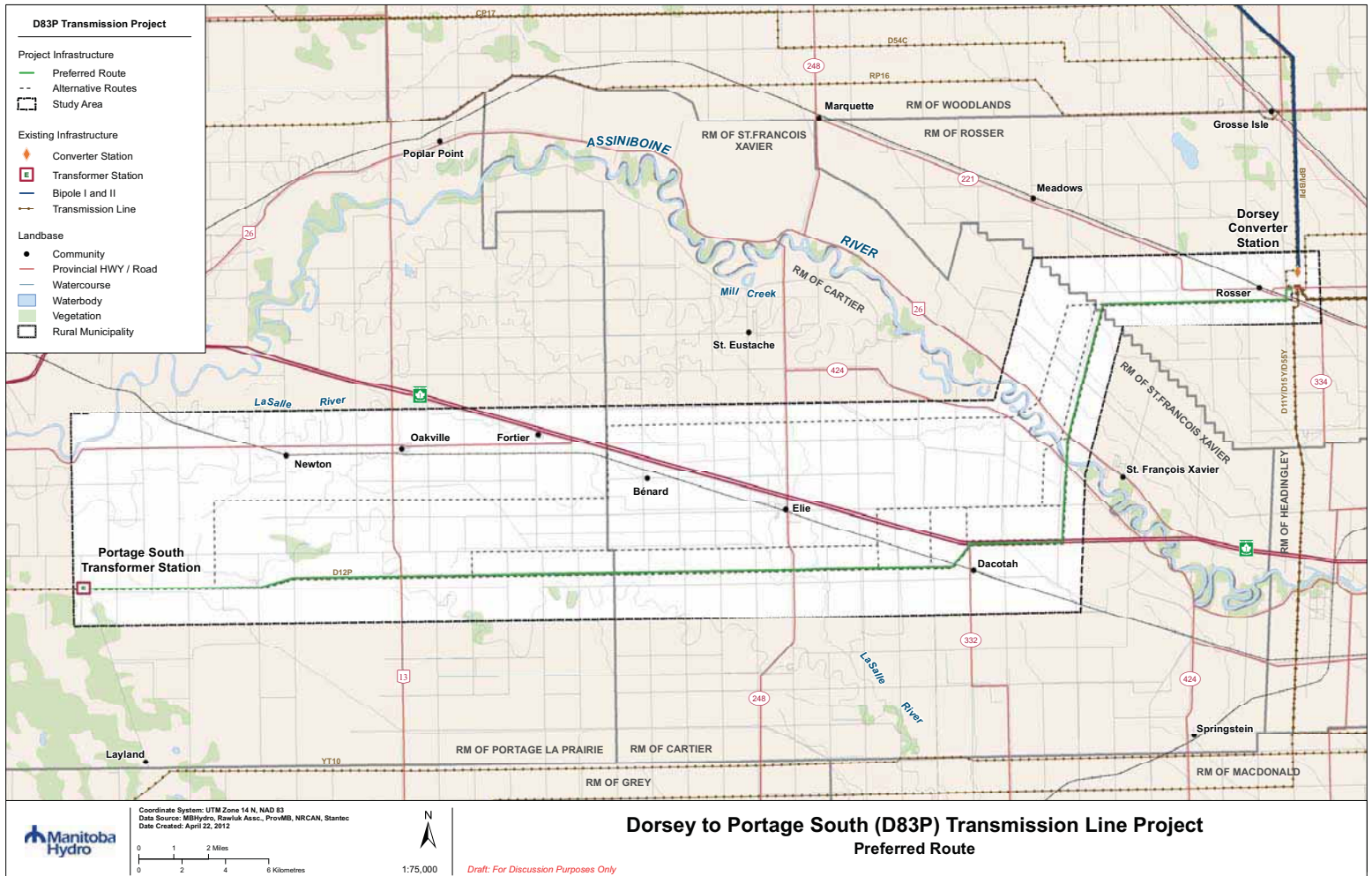


After consideration of these criteria the Project team determined that the preferred route was the one identified as Alternative Route A during the Round 1 Public Open House. This route is located north of the existing transmission line known as D12P.



Preferred Route

Dorsey to Portage South Transmission Line Project



What We Heard

Dorsey to Portage South Transmission Line Project

Local residents who participated during Round 1 consultation provided feedback on the alternative routing options for the Project. A total of 65% of participants who submitted a comment sheet noted a preference for Alternative Route A along the north side of the existing transmission line (D12P). This is the preferred route.

The following reasons were cited by those who selected the preferred route:

- There will be less disturbance to the area because the new transmission line would follow the same route as the existing transmission line
- Effects associated with the existing transmission line will already have been understood and addressed
- Aerial applicators will have fewer concerns since the pilots are already accustomed to the existing transmission line
- By following the existing transmission line there would be fewer issues associated with land acquisition and easements since Manitoba Hydro owns much of the required right-of-way



Public Input & Design Change

Dorsey to Portage South Transmission Line Project

Through research and consultation, alternative design options have been identified and are being considered by the Project team at certain points along the preferred route.

As a result of feedback from local residents Manitoba Hydro has explored options for crossing the Assiniboine River.

- In order to accommodate concerns about the proximity of residences, driveway displacement and woodlot clearing, Manitoba Hydro will utilize double-circuit towers along this portion of the route
- Use of double-circuit towers would allow the existing transmission line and those from the new Project to be strung on a single tower structure on each side of the river



Project Effects and Mitigation

Dorsey to Portage South Transmission Line Project

Health Risks and Electromagnetic Fields

Concerns were raised during the consultation process about the potential effects of Electromagnetic Fields (EMF) on health.

- Scientific studies and associated literature have shown no direct link between human health and exposure to EMF
- Please speak with a Manitoba Hydro representative for more information

Property Considerations

Farming Impacts

Concerns were raised about potential effects of the Project on agricultural operations.

- Farming will be feasible beneath the transmission line but Manitoba Hydro recognizes that the placement of their infrastructure projects can create challenges for farmers concerning spraying and seeding



Project Effects and Mitigation

Dorsey to Portage South Transmission Line Project

Property Considerations

Property Value

People have expressed concern that property values will decline due to the presence of another transmission line in the area (D12P).

- Manitoba Hydro monitors property values near their infrastructure projects and property values are not expected to decline as a result of the construction of the Project

Compensation

Landowners have indicated that they would like to know how they would be compensated if the placement of the transmission line will affect their properties.

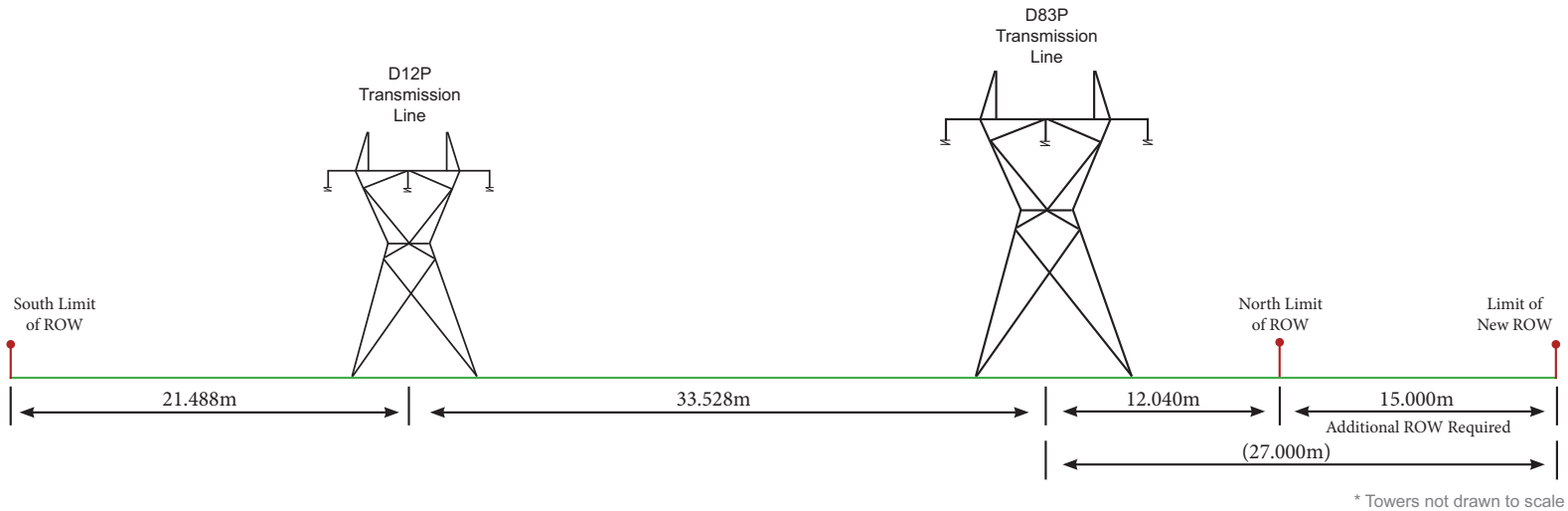
- In most cases, towers will be placed on property currently owned by Manitoba Hydro and the existing right-of-way for transmission line D12P will be expanded as required
- Manitoba Hydro will seek to acquire easement agreements with all affected landowners and they will be compensated



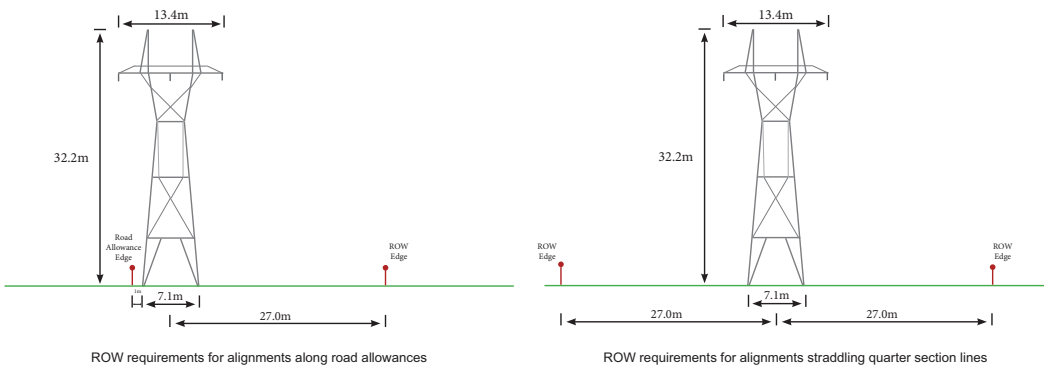
Tower Design & Right-of-Way

Dorsey to Portage South Transmission Line Project

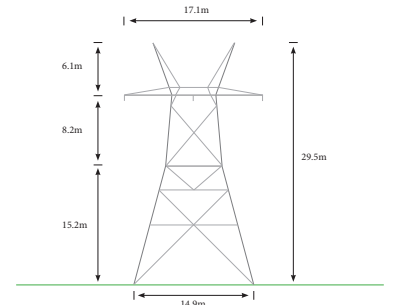
Preliminary Right-Of-Way for Proposed Transmission Line



Self-Supporting Steel Suspension Tower



Angle Anchor Tower



*Note: These preliminary drawings use average measurements.

Mitigation & Environmental Protection Plans

Dorsey to Portage South Transmission Line Project

The EIS for the Project will consider mitigation and monitoring measures, which will be implemented through Manitoba Hydro's Environmental Protection Program (EnvPP) which describes how the environment will be protected during all phases of the Project including pre-construction, construction, operation and decommissioning.

The EnvPP provides a framework for the delivery, management and monitoring of environmental and socio-economic protection measures that will:

- Consider input from stakeholders
- Satisfy environmental protection guidelines and best practices
- Fulfill regulatory requirements, corporate policies and commitments



Project Timeline

Dorsey to Portage South Transmission Line Project

Round 1 Introduction to the Project

The first round of public consultation:

- Describe the proposed Project and SSEA process
- Present alternative route options and identify issues and concerns
- Document what was heard

Round 2 Presentation of Preferred Route

During this round of consultation we will:

- Present the preferred route.
- Identify issues and concerns and discuss possible mitigation measures
- Document what is heard



We are here

Next Steps

The next steps in the process will include:

- Submission of Environmental Impact Statement: June 2012
- Receipt of license: October 2012
- Construction: October 2014 to March 2015
- In-service date: April 2015



We Want to Hear from You

Dorsey to Portage South Transmission Line Project

There are a number of ways you can participate and provide your input

Open House discussion

Phone (collect): 1 (204) 360-7353

Comment sheets

E-mail: dblock@hydro.mb.ca

**Please complete a comment form and give it to a
Manitoba Hydro representative before you leave**

Let us know if you have any comments or concerns about the proposed Dorsey to Portage South Transmission Line Project

Tell us if you may be directly or indirectly affected by the proposed Project and any actions Manitoba Hydro can take to avoid or minimize any potential effects

Thank-you



OPEN HOUSE COMMENT FORMS

OPEN HOUSE COMMENT FORM: ROUND 1

DORSEY TO PORTAGE SOUTH 230 kV TRANSMISSION LINE PROJECT
COMMENT SHEET

Manitoba Hydro asks that you take this opportunity to provide us with your comments and suggestions about the proposed Dorsey to Portage South 230 kV Transmission Line Project. Please drop the completed comment sheet in the box provided, or forward it to Manitoba Hydro at the address shown below.

1. The purpose of this Open House is to provide you with information about the proposed Dorsey to Portage South 230 kV Transmission Line Project. Did you find that this Open House provided you with sufficient information about the project?

Yes No Why / Why Not:

2. Is there any additional information that Manitoba Hydro should consider for this project in general? Please specify.

3. Manitoba Hydro has identified several alternative routes for the proposed transmission line. Do you feel that these are practical routes to consider? If so, why? If not, why not?

4. Do you believe there are any potential impacts associated with any of these alternative routes? Explain.

Route A:

Route B:

Route C:

5. Local knowledge can help to minimize potential project impacts. As such, are there any potential project impacts, other than those identified at this Open House that should be investigated? Please explain.

6. Additional Comments

<p>James Matthewson, Senior Environmental Assessment Officer. Licensing & Environmental Assessment Department, Transmission Planning and Design Manitoba Hydro 820 Taylor Avenue Winnipeg, MB R3M 3T1 jmatthewson@hydro.mb.ca 204-360-3119</p>	<p>Name: <hr/></p> <p>Address: <hr/></p> <p>Telephone: <hr/></p> <p>(OPTIONAL)</p>
-----------------------------------------------------------------------------------------------------------------------------------------------------------------------------------------------------------------------------------------------------------------------------------------------------------------------------	------------------------------------------------------------------------------------------------

OPEN HOUSE COMMENT FORM: ROUND 2

DORSEY TO PORTAGE SOUTH 230 kV TRANSMISSION LINE PROJECT
COMMENT SHEET

Manitoba Hydro asks that you take this opportunity to provide us with your comments and suggestions about the preferred route for the Dorsey to Portage South 230 kV Transmission Line Project. Please drop the completed comment sheet in the box provided, or forward it to Manitoba Hydro at the address shown below.

1. The purpose of this Open House is to provide you with an opportunity to review and comment on the preferred route, identify concerns and potential effects and discuss ways to minimize or avoid these effects. Did you find that this Open House has provided you with sufficient opportunity to do so?

Yes No Why / Why Not:

2. Manitoba Hydro has identified some of the potential effects that may be associated with the Project. Do you have specific concerns about the preferred route? Please explain.

3. Referring to the concerns that you noted above, how do you think Manitoba Hydro might be able to alleviate your concerns? Please address each separately.

5. Local knowledge can help to minimize potential project effects. As such, are there any potential project effects, other than those identified at this Open House that should be investigated? Please explain.

6. Additional Comments

<p>David Block Licensing & Environmental Assessment Department, Manitoba Hydro P.O. Box 7950, Station Main, Winnipeg MB R3C 0J1 dblock@hydro.mb.ca 204-360-7353</p>	<p>Name: <hr/></p> <p>Address: <hr/></p> <p>Telephone: <hr/></p> <p>(OPTIONAL)</p>
---------------------------------------------------------------------------------------------------------------------------------------------------------------------------------------------------------------------------------------------	------------------------------------------------------------------------------------------------