

### Keyask Transmission Project

#### Project Infrastructure

- Project Study Area
- The Region

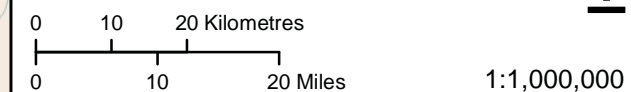
#### Infrastructure

- Converter Station (Proposed)
- Converter Station
- Generating Station (Proposed)
- Generating Station
- Bipole III (Proposed 500 kV HVDC Line)
- Bipole I and II (Existing 500 kV DC Line)
- Transmission Line

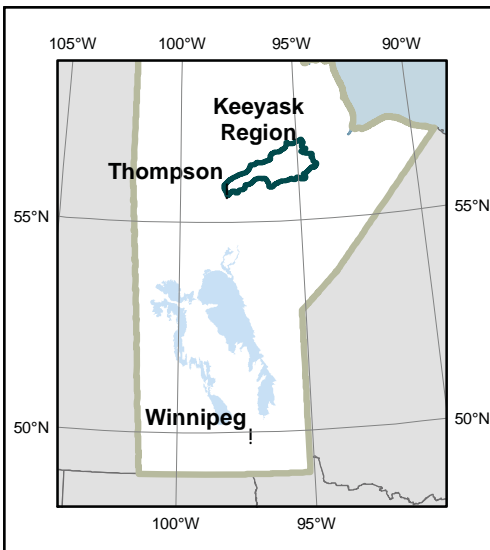
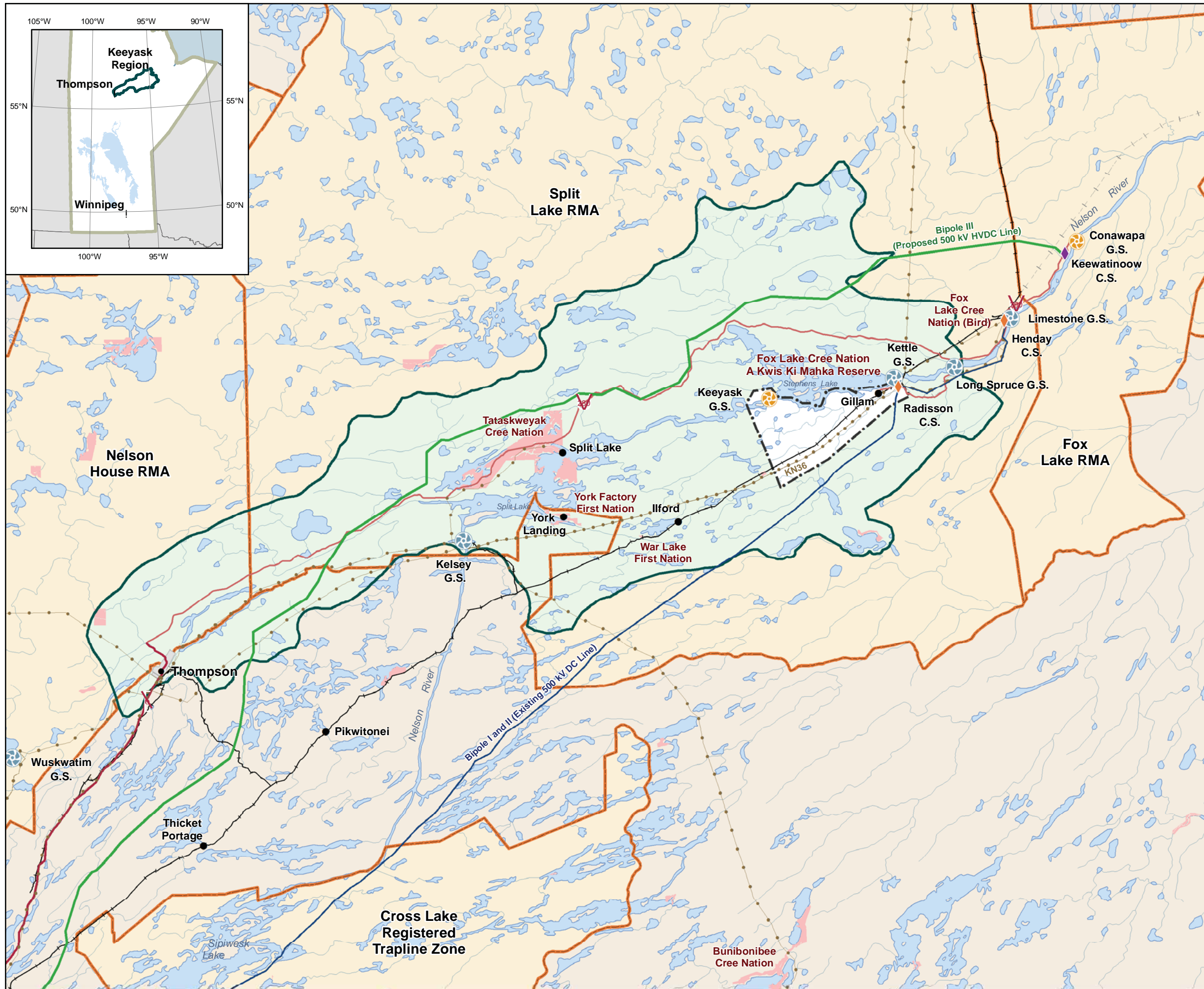
#### Landbase

- Community
- Provincial Highway
- Provincial Road
- Active Railway
- Abandoned Railway
- Resource Management Area
- First Nation
- Watercourse
- Waterbody

Coordinate System: UTM Zone 15N NAD83  
 Data Source: MBHydro, Stantec, ProvMB, NRCAN  
 Date Created: October 11, 2012



## The Keyask Transmission Project Study Area and Region





### Keeyask Transmission Project

#### Project Infrastructure

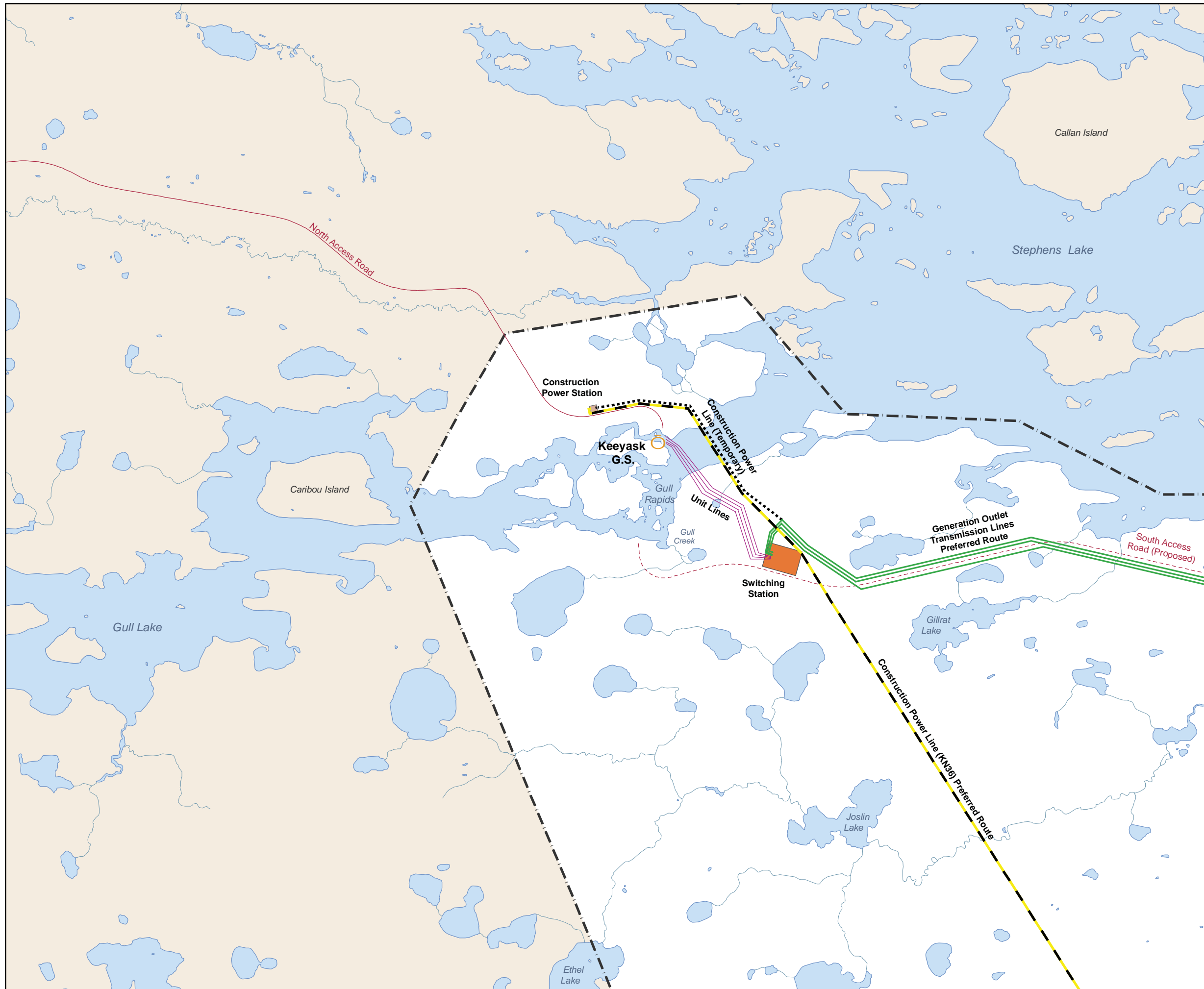
- Generation Outlet Lines (200m ROW)
- Construction Power Line (KN36) (60m ROW)
- - - - Construction Power Line (Temporary) (60m ROW)
- Unit Lines (265m ROW)
- Construction Power Station
- Keeyask Switching Station
- Project Study Area

#### Infrastructure

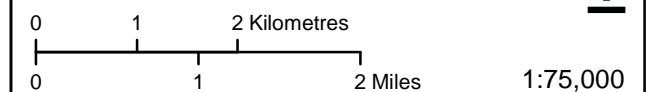
- Generating Station (Proposed)
- South Access Road (Proposed)
- North Access Road

#### Landbase

- Watercourse
- Waterbody



Coordinate System: UTM Zone 15N NAD83  
 Data Source: MBHydro, Stantec, ProvMB, NRCAN  
 Date Created: October 11, 2012



### Location of Gull Rapids in the Project Study Area





### Keeyask Transmission Project

#### Project Infrastructure

Project Study Area

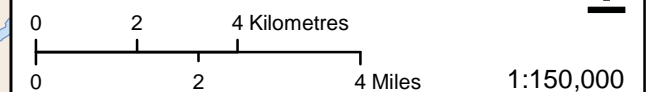
#### Infrastructure

- Converter Station
- Generating Station (Proposed)
- Generating Station
- Bipole I and II (Existing 500 kV DC Line)
- Transmission Line

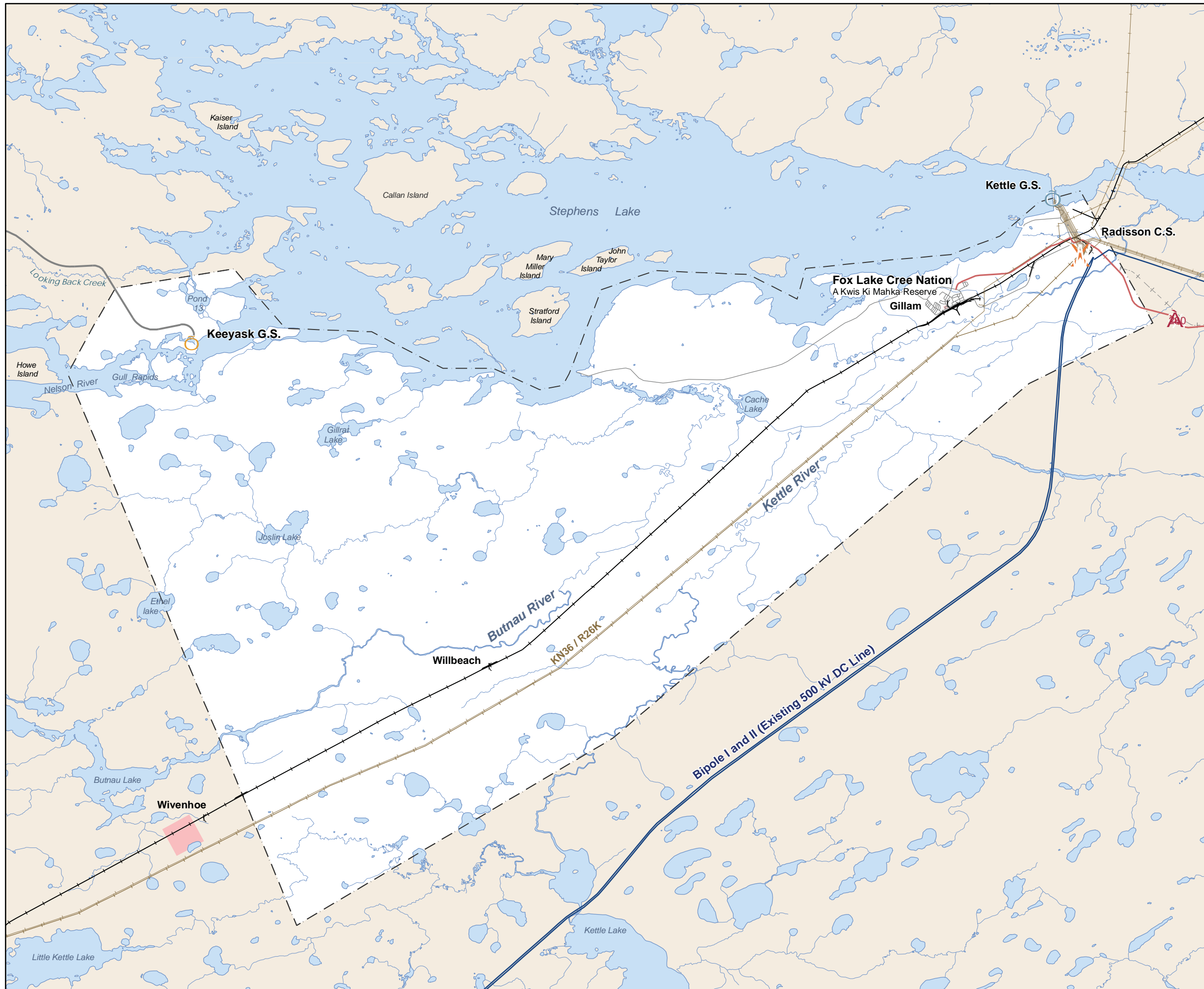
#### Landbase

- Community
- Provincial Road
- Access / Municipal Road
- Active Railway
- Abandoned Railway
- Watercourse
- Waterbody

Coordinate System: UTM Zone 15N NAD83  
 Data Source: MBHydro, ProvMB, NRCAN  
 Date Created: October 11, 2012



## Hydrography in the Project Study Area





### Keeyask Transmission Project

#### Project Infrastructure

- Route Alternative Option A
- Route Alternative Option B
- Route Alternative Option C
- Route Alternative Option D
- Construction Power Line (KN36) Option 1 and 2
- - - Construction Power Line (Temporary)
- Unit Lines
- 3 Construction Power Station
- 3 Keeyask Switching Station
- Project Study Area

#### Infrastructure

- X Converter Station
- Generating Station (Proposed)
- Generating Station
- Bipole I and II (Existing 500 kV DC Line)
- Transmission Line
- South Access Road (Proposed)
- North Access Road

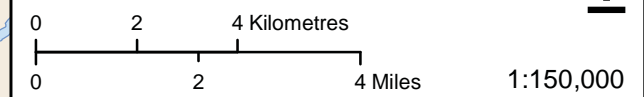
#### Common Nighthawk Habitat

- High
- Moderate

#### Landbase

- ⌋ Community
- Provincial Road
- Municipal Road
- Active Railway
- - - Abandoned Railway
- Watercourse
- Waterbody

Coordinate System: UTM Zone 15N NAD83  
 Data Source: MBHydro, ProvMB, NRCAN  
 Date Created: October 11, 2012



## Common Nighthawk Habitat

