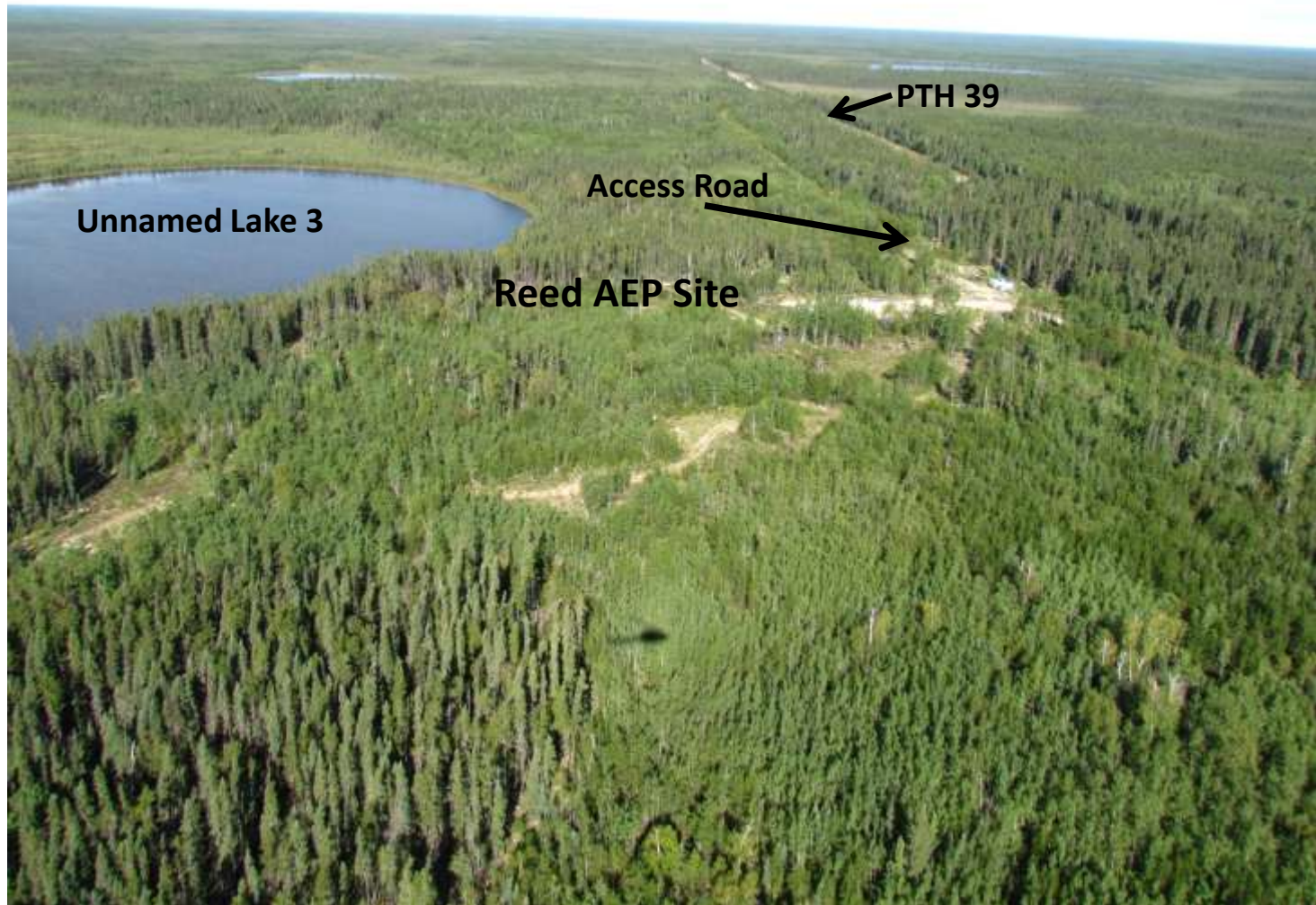


Issues Raised

- Site clearing
- Caribou protection
- Mining in parks
- Water quality
- Carbon footprint
- Noise and Traffic
- Recreation values
- Exploration approval process
- Spruce Point Mine

Before Site Clearing



Reed AEP Site, Looking West (2011)



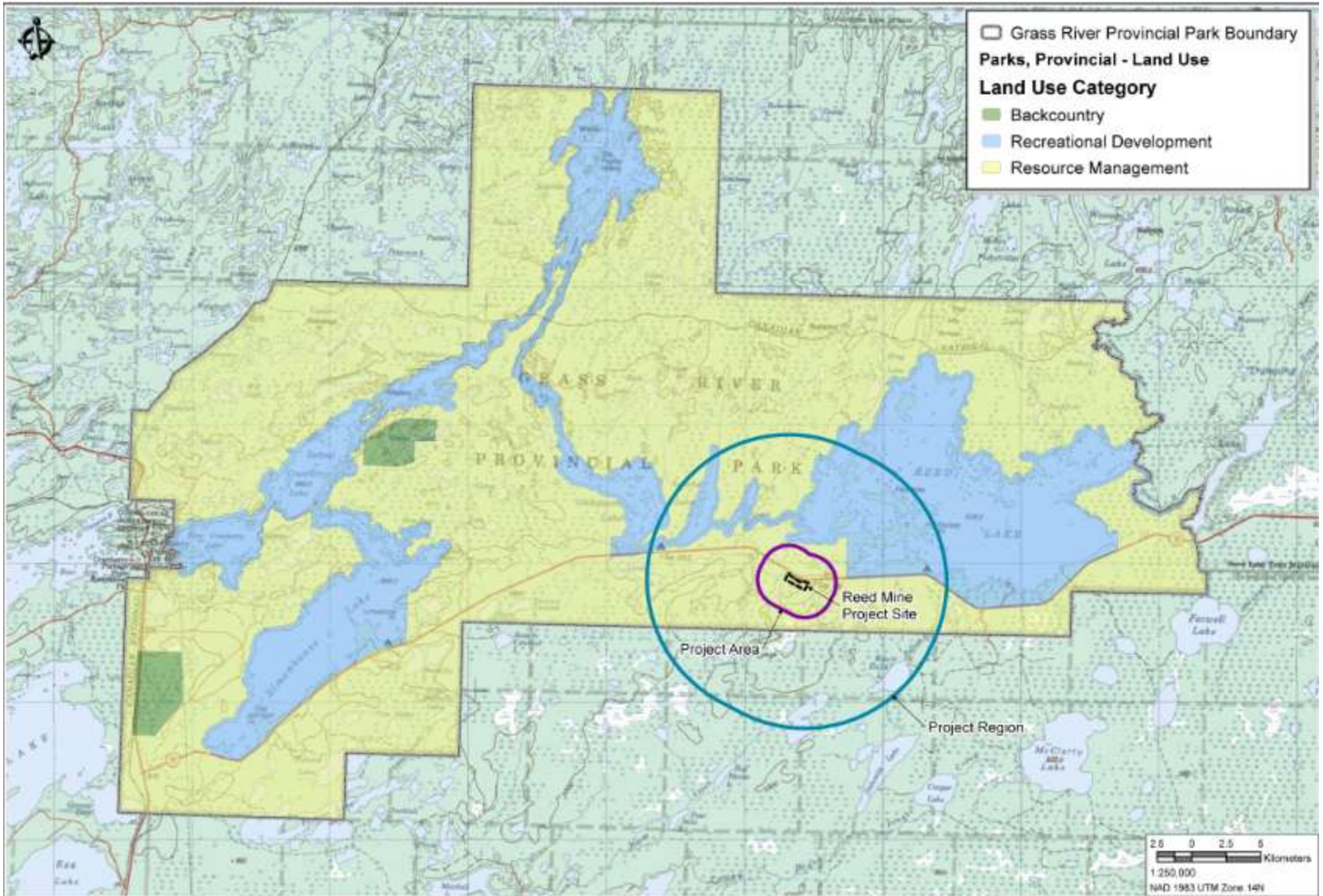
After Site Clearing

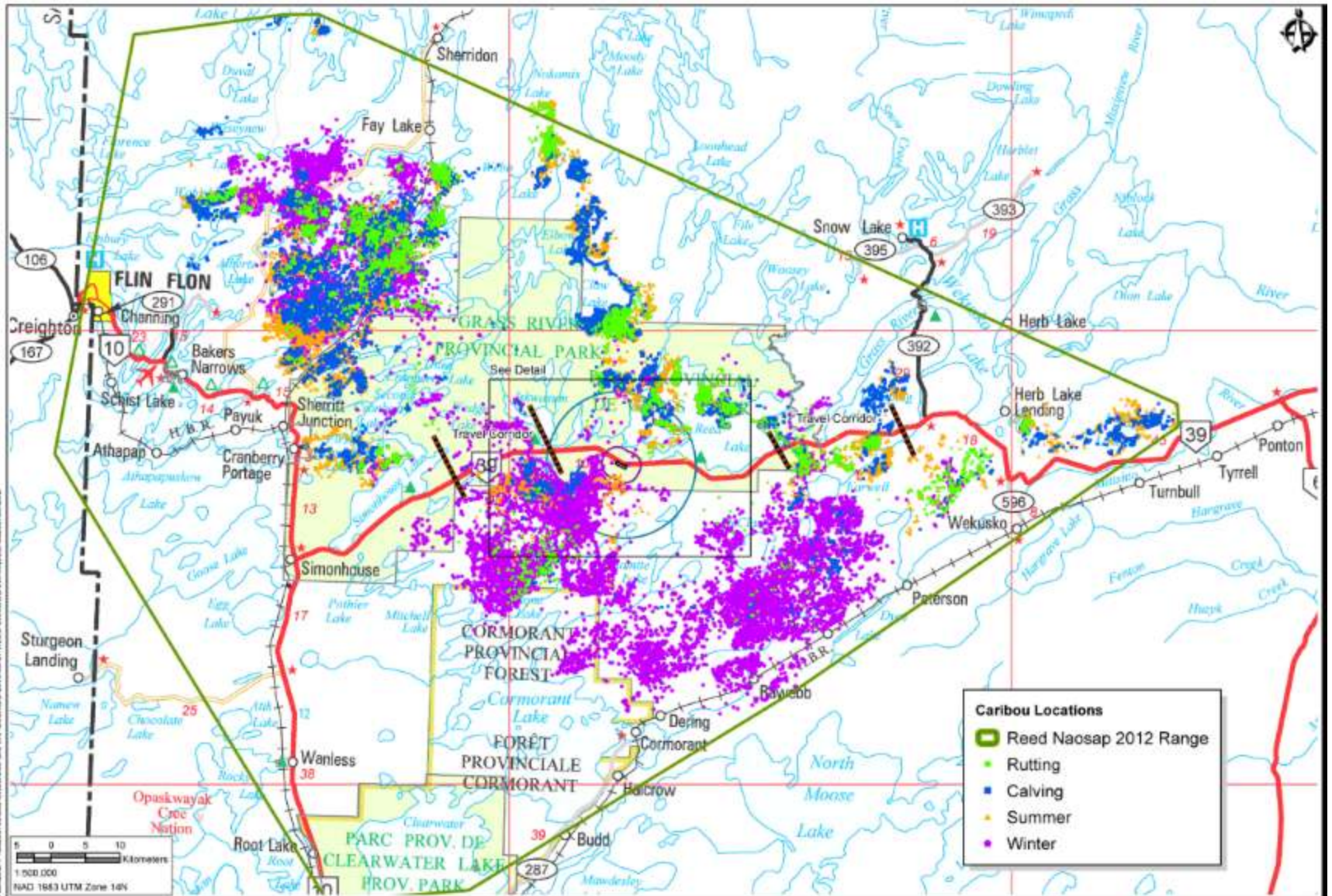


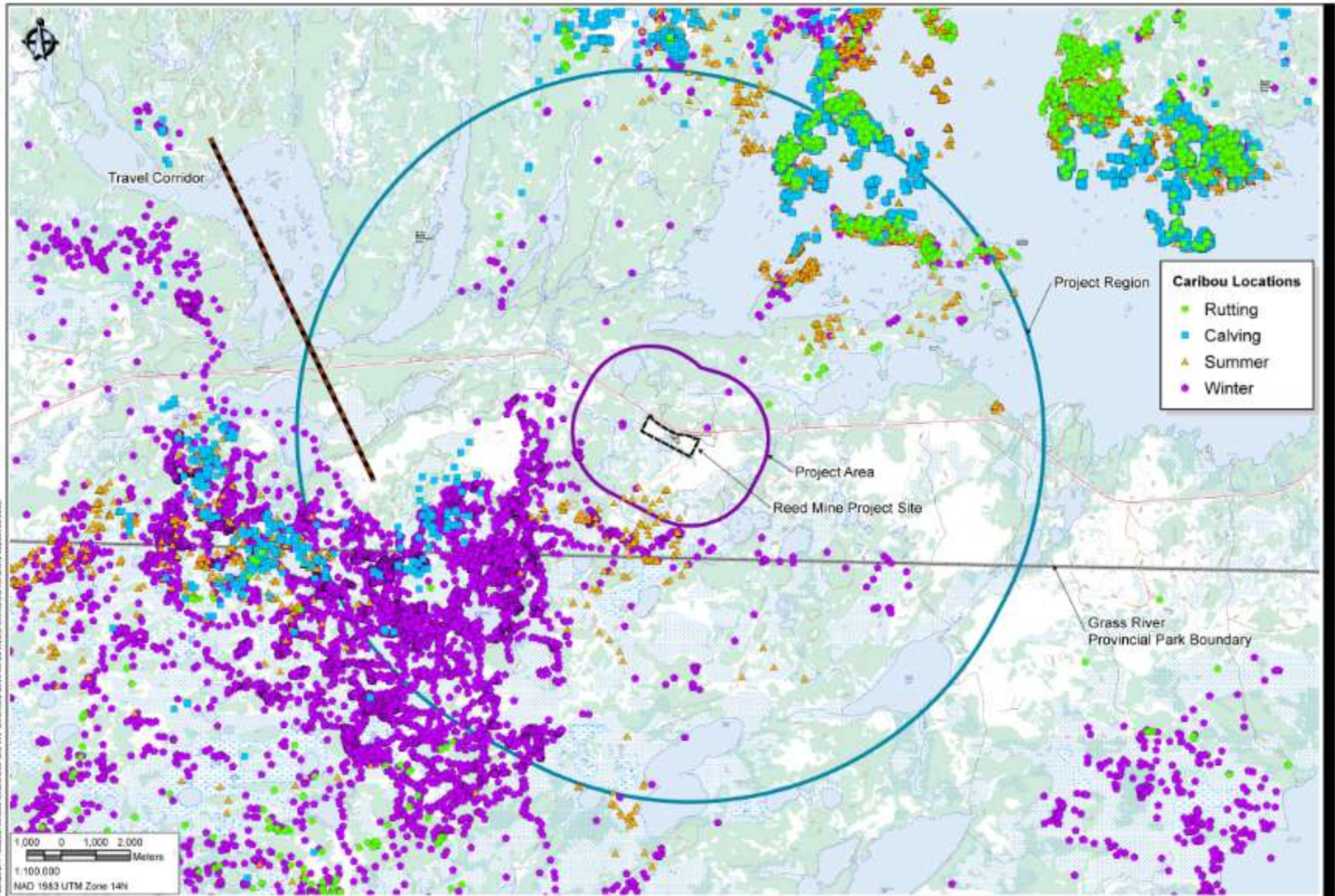
Reed AEP Site and Access Road on right, PTH 39 on left, looking east (August 2012)

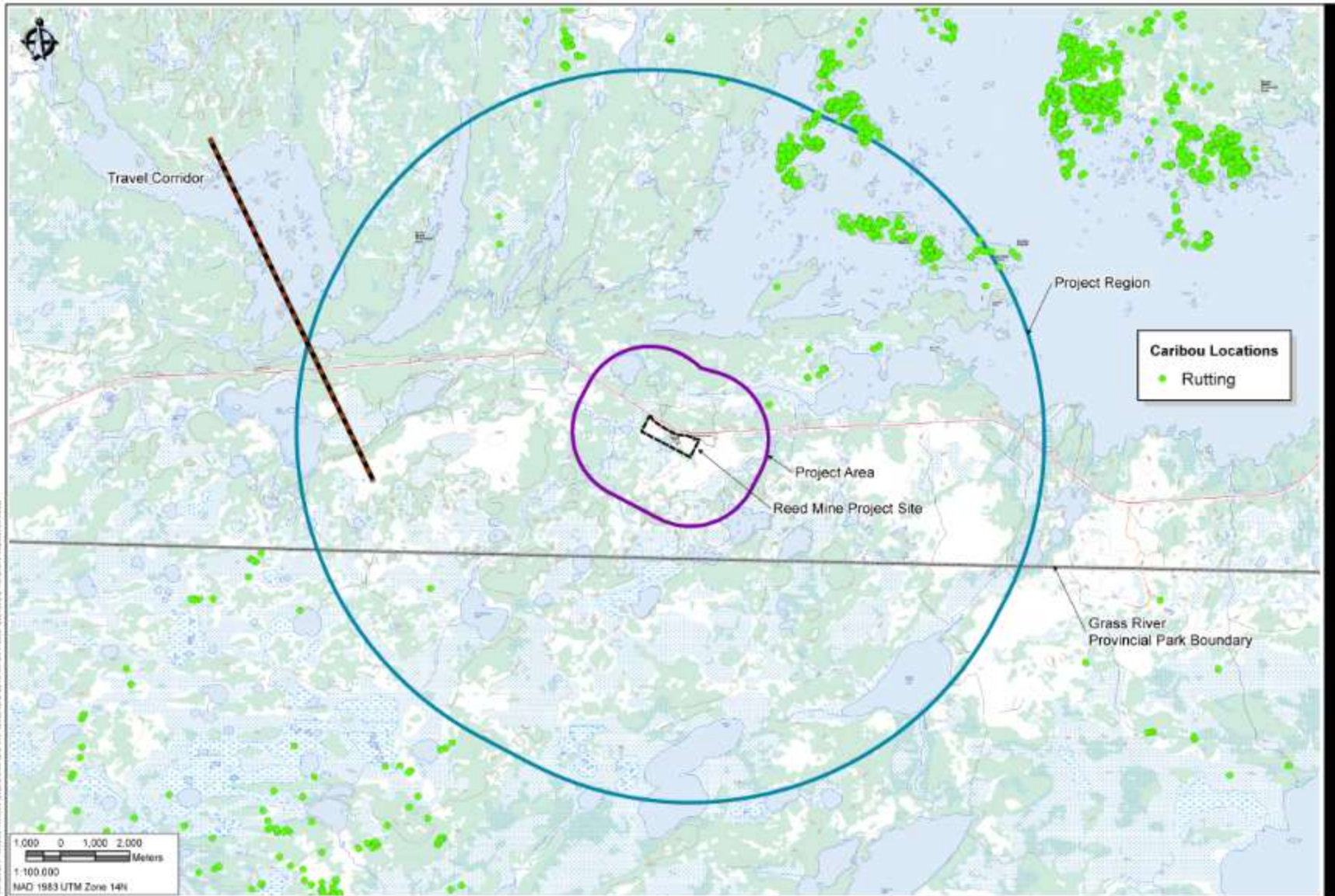
Reed AEP Site looking north, southern reach of Reed Lake approximately 3km in background
(August 2012)

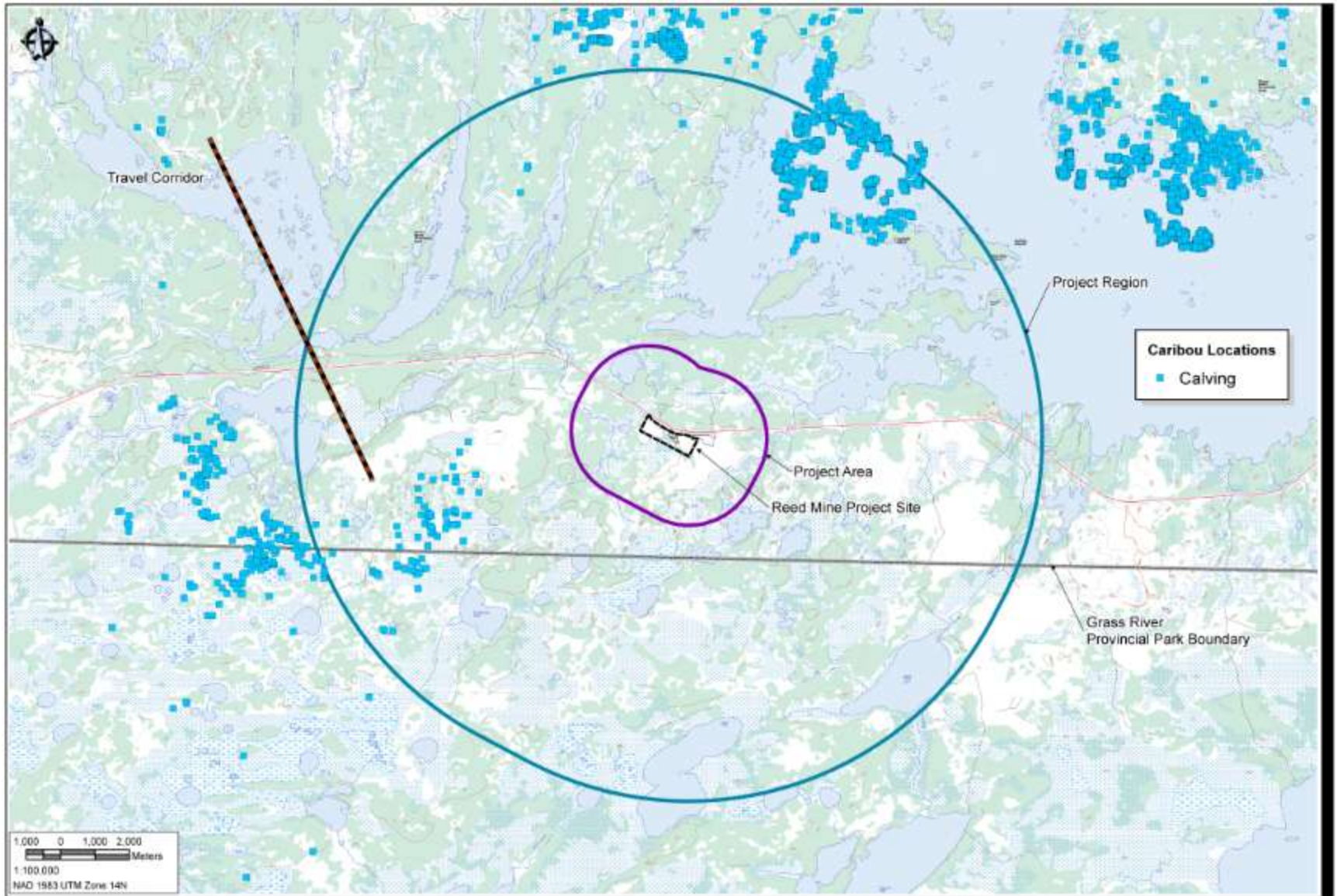


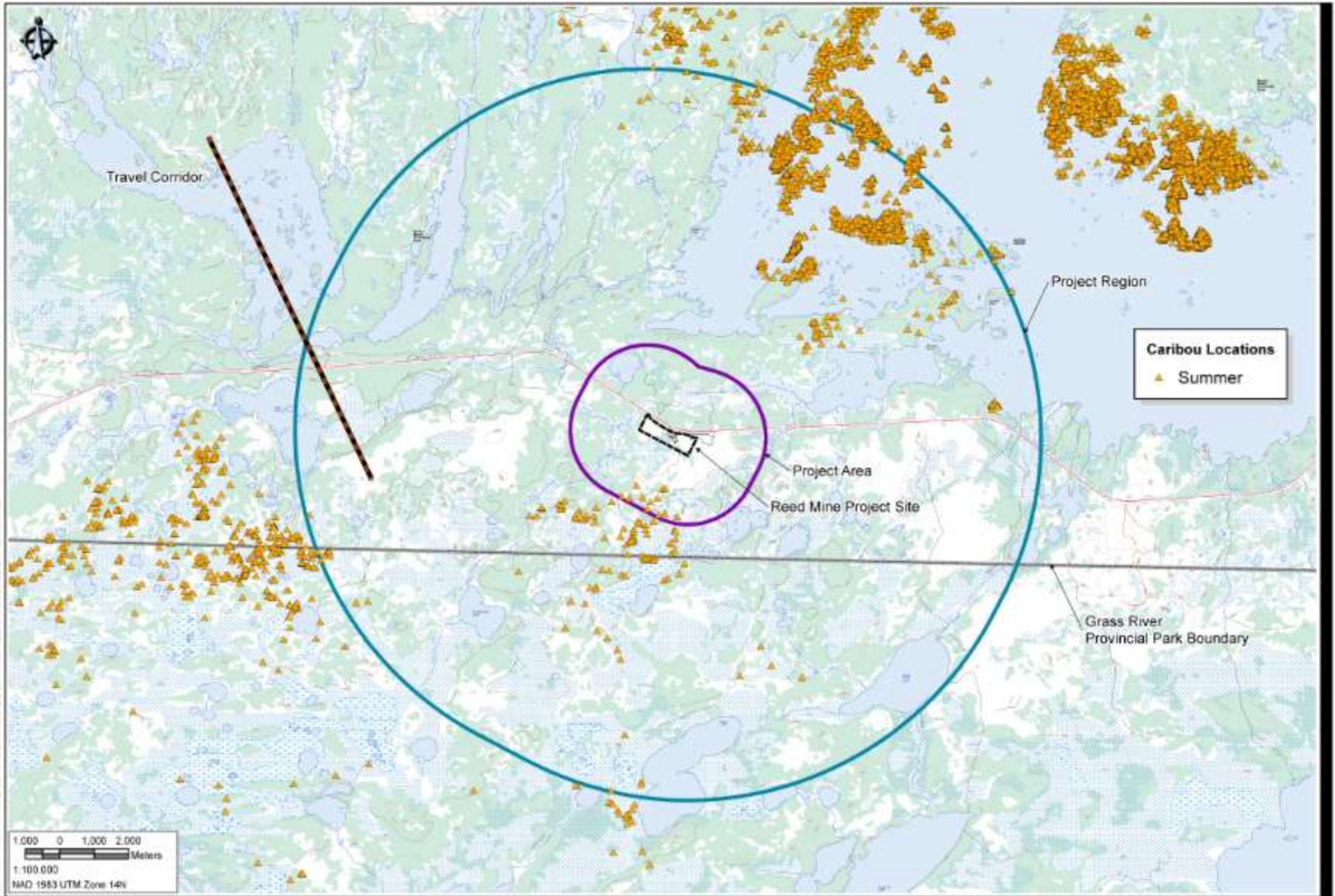


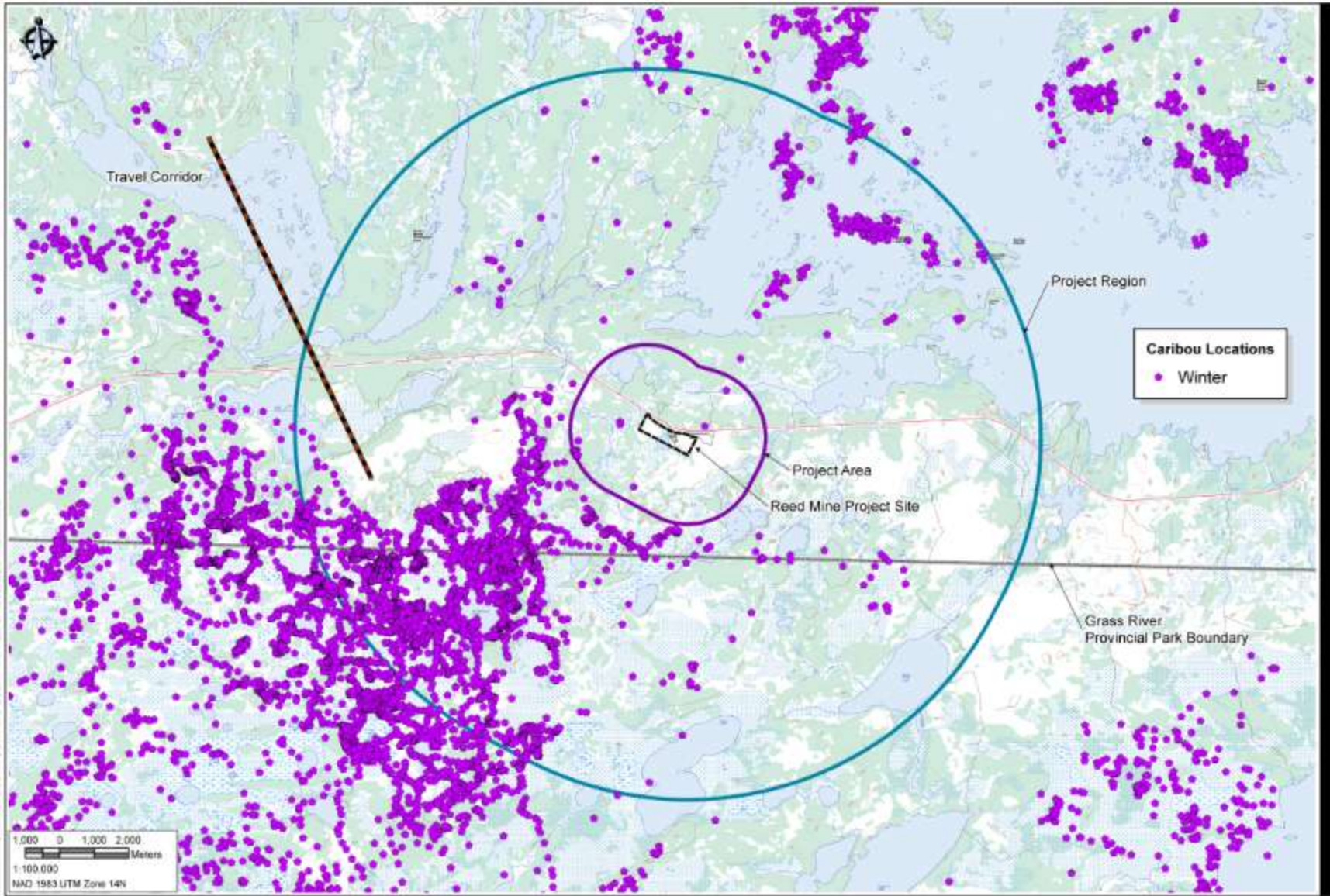


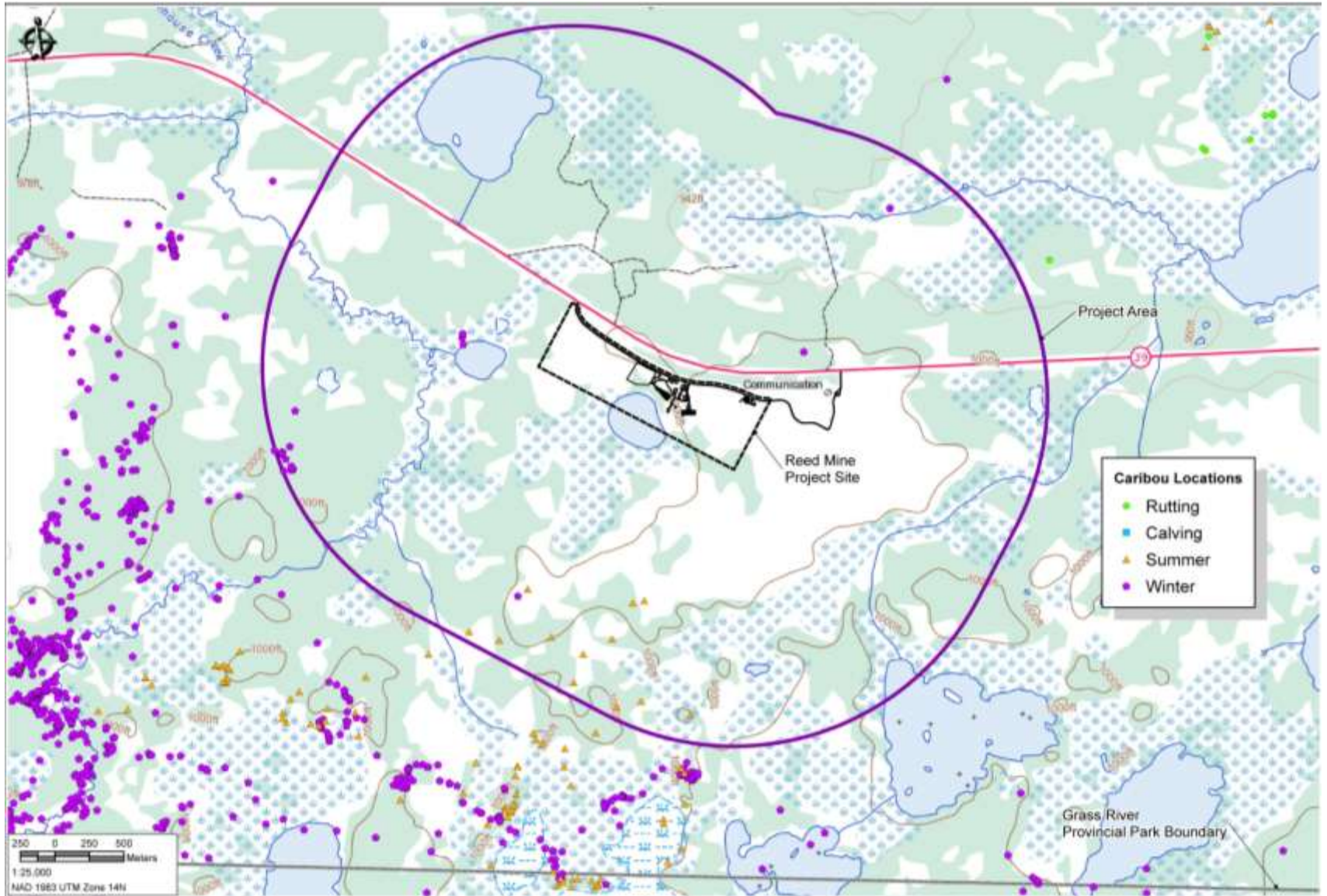




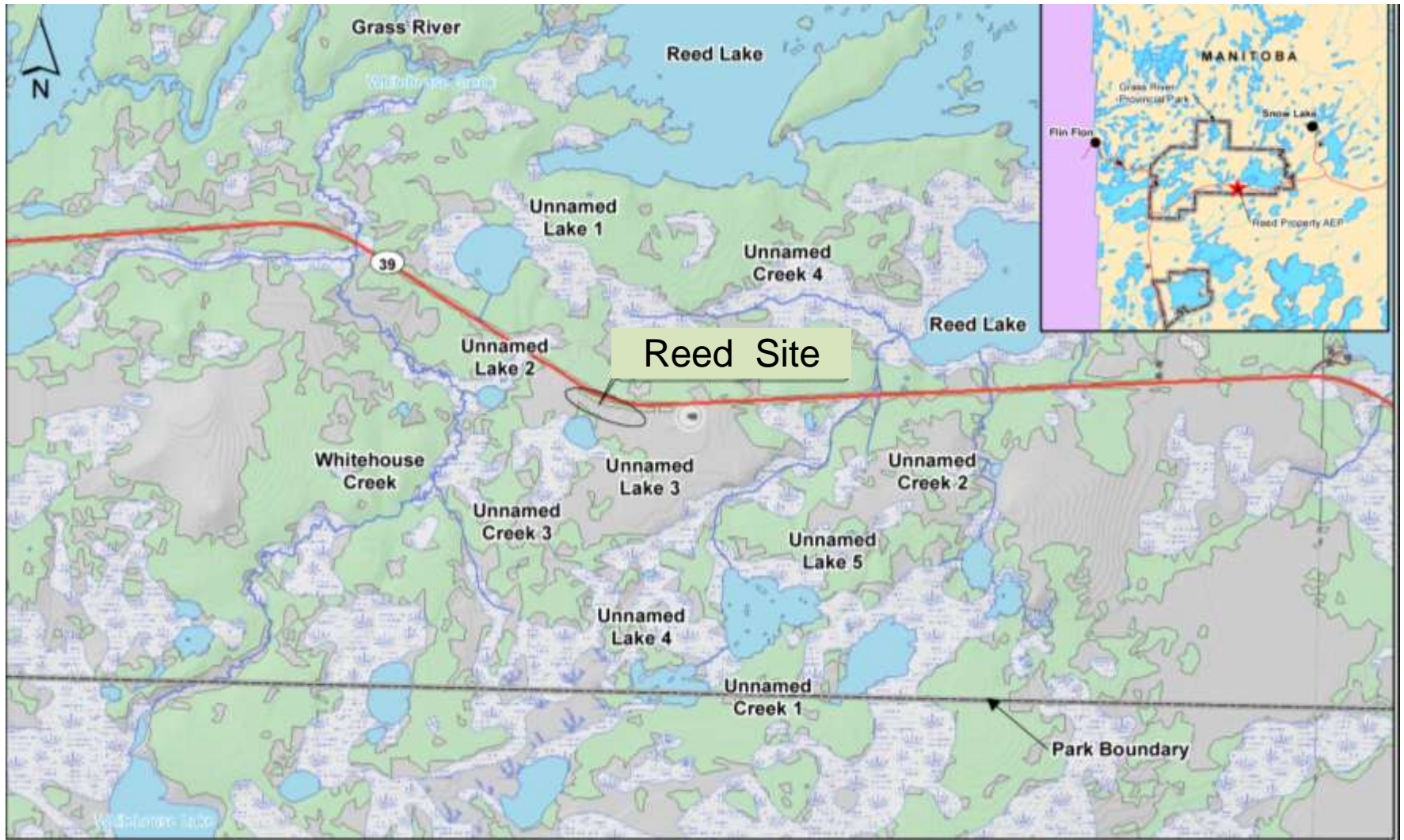








Reed Area Water Bodies



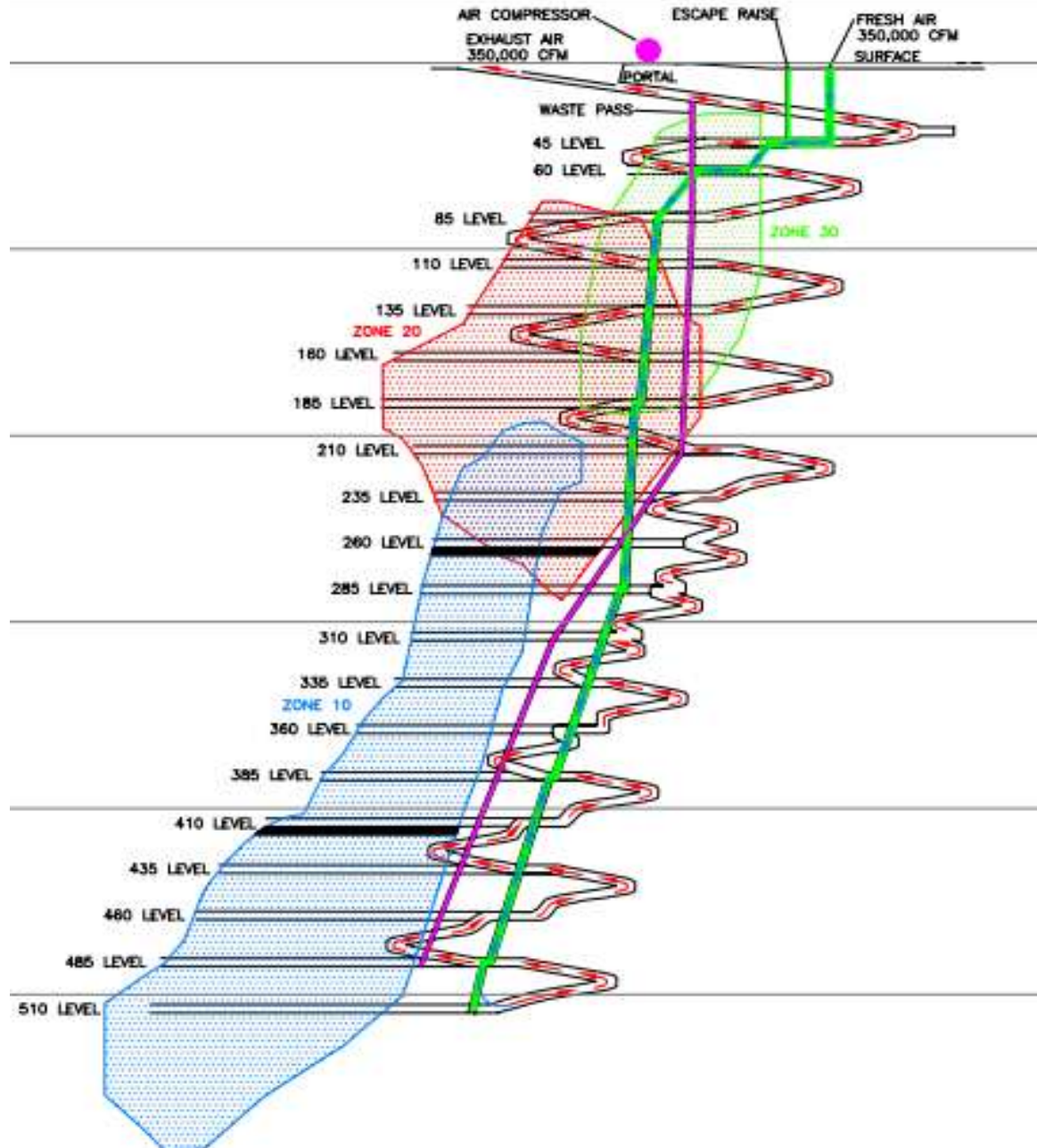


Rock storage pad

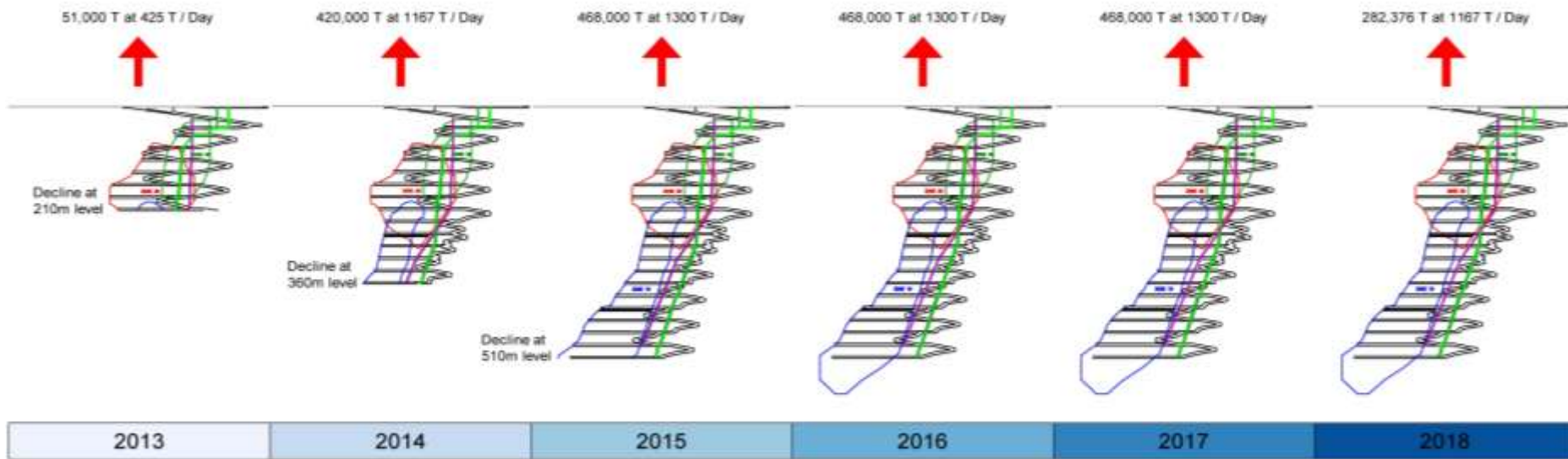


Reed AEP Site looking north, southern reach of Reed Lake approximately 3km in background (August 2012)

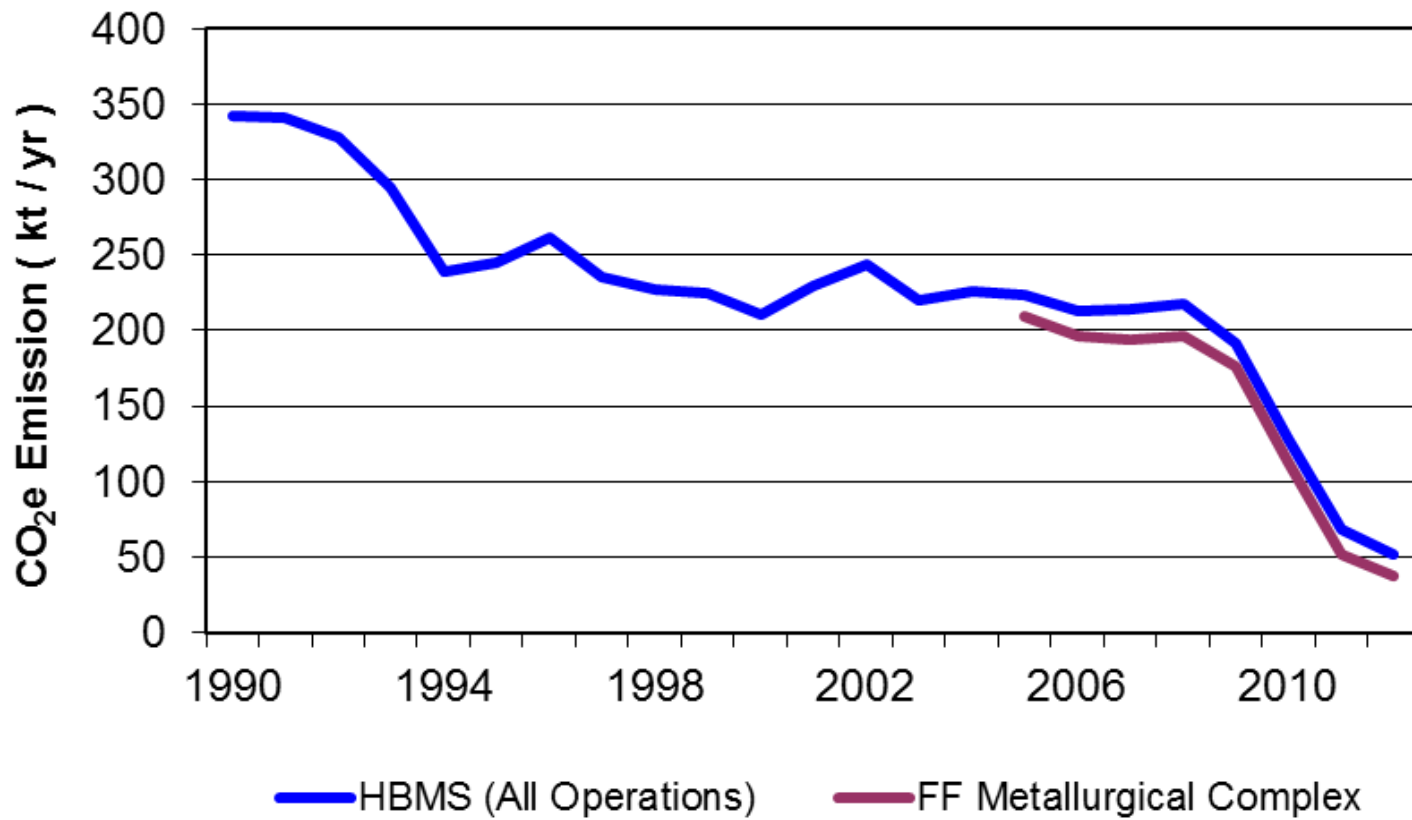
Reed AEP Longitudinal Section

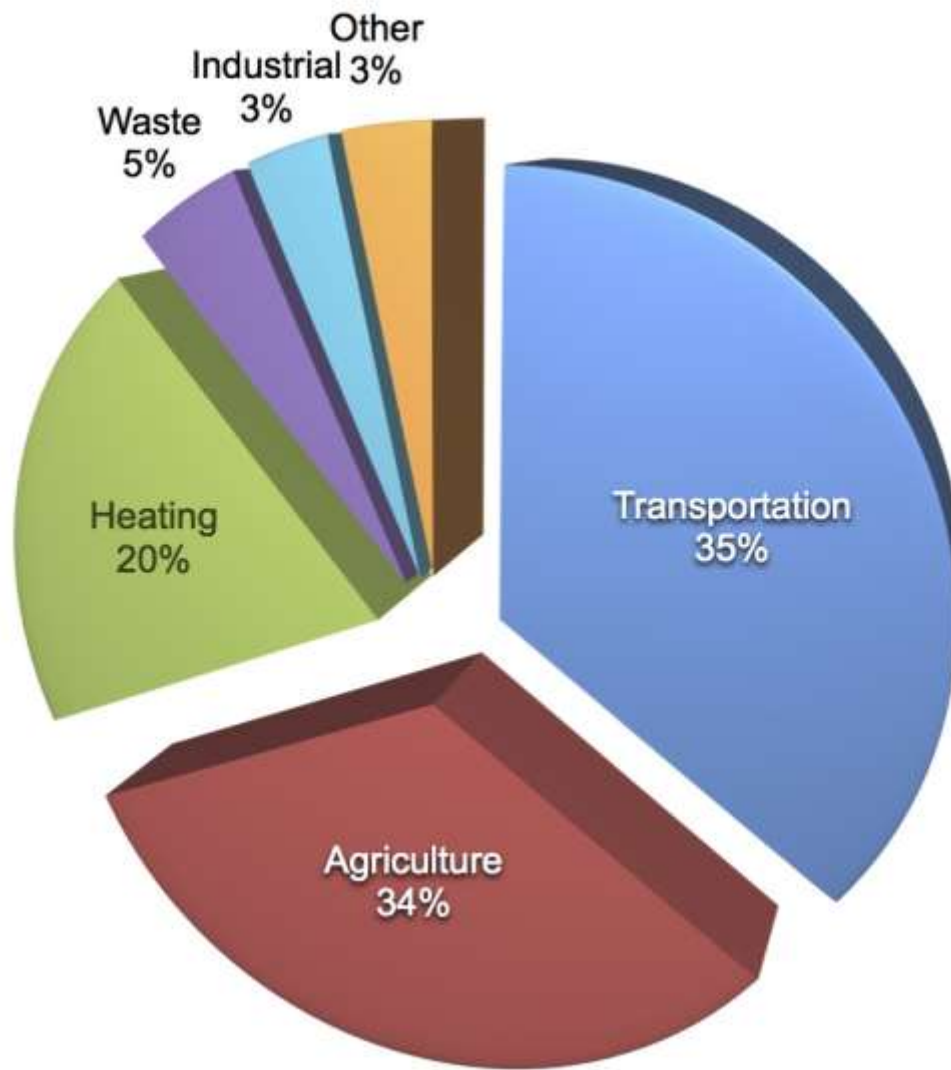


Mine Development Process



HBMS CO₂e Emissions (including electricity) 1990-2012





GHG by sector for the Province of Manitoba - 2010



Access Road – Looking East



Decline Development – Fall 2012



Existing Infrastructure at Reed AEP Construction Camp





Looking East Toward AEP Site Along Existing Access Road (2011)



Looking West Along Existing Access Road (2011)





Concrete
Caps





08/24/2012 14:39



08/24/2012 14:39



08/24/2012 14:40

















07/19/2012 10:14

