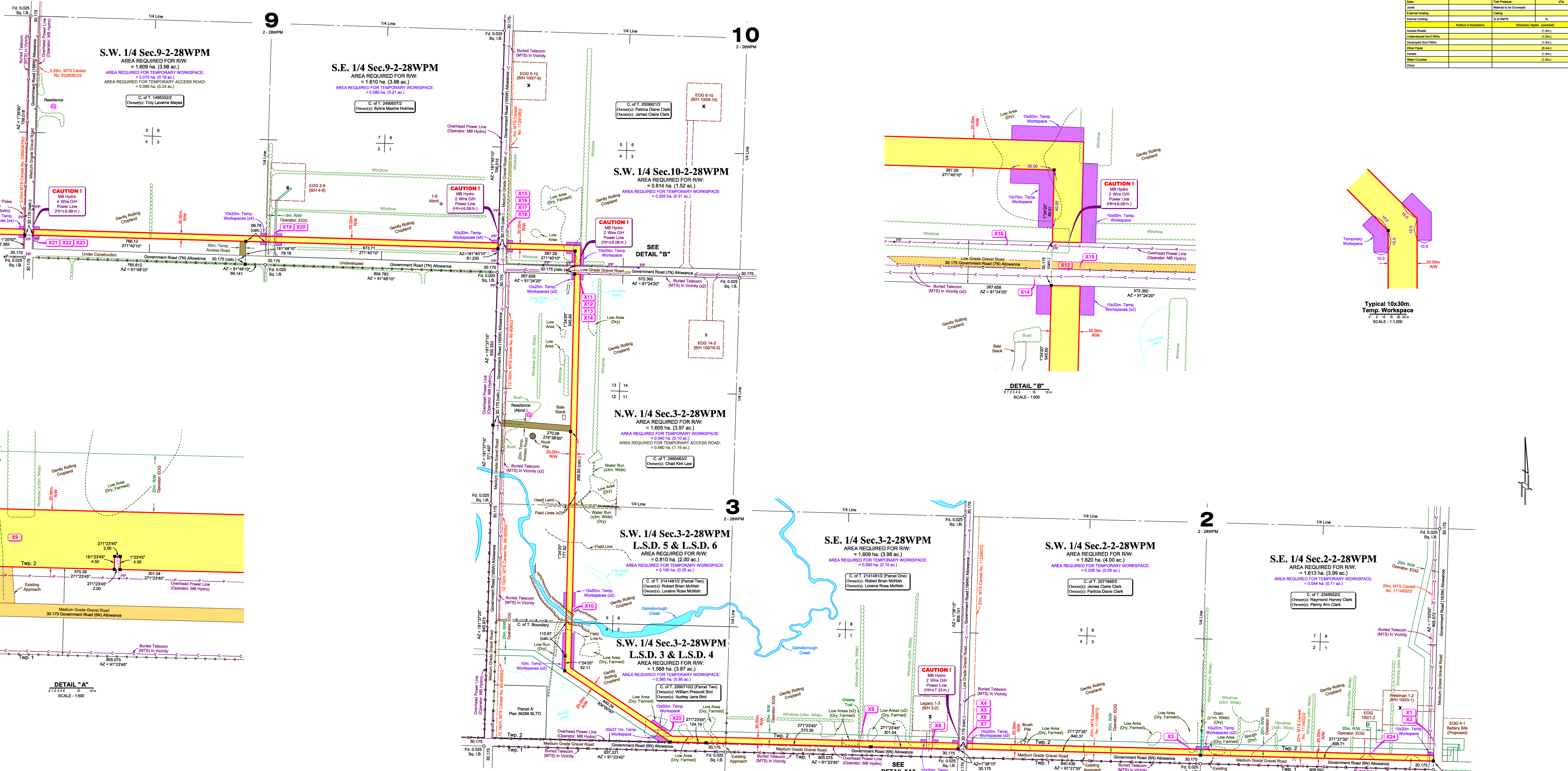


FOR RIGHT OF WAY CONTINUATION  
SEE PLAN 138765-C2



PIPE SPECIFICATIONS				
Normal Pipe Size	O.D.	W.T.	Material	Pressure
12"	12.75"	0.3125"	Steel	150 psi
18"	18.75"	0.3125"	Steel	150 psi
24"	24.75"	0.3125"	Steel	150 psi
30"	30.75"	0.3125"	Steel	150 psi
36"	36.75"	0.3125"	Steel	150 psi
42"	42.75"	0.3125"	Steel	150 psi
48"	48.75"	0.3125"	Steel	150 psi
60"	60.75"	0.3125"	Steel	150 psi
72"	72.75"	0.3125"	Steel	150 psi
84"	84.75"	0.3125"	Steel	150 psi
96"	96.75"	0.3125"	Steel	150 psi
108"	108.75"	0.3125"	Steel	150 psi
120"	120.75"	0.3125"	Steel	150 psi
144"	144.75"	0.3125"	Steel	150 psi
180"	180.75"	0.3125"	Steel	150 psi
240"	240.75"	0.3125"	Steel	150 psi
300"	300.75"	0.3125"	Steel	150 psi
360"	360.75"	0.3125"	Steel	150 psi
420"	420.75"	0.3125"	Steel	150 psi
480"	480.75"	0.3125"	Steel	150 psi
540"	540.75"	0.3125"	Steel	150 psi
600"	600.75"	0.3125"	Steel	150 psi
660"	660.75"	0.3125"	Steel	150 psi
720"	720.75"	0.3125"	Steel	150 psi
780"	780.75"	0.3125"	Steel	150 psi
840"	840.75"	0.3125"	Steel	150 psi
900"	900.75"	0.3125"	Steel	150 psi
960"	960.75"	0.3125"	Steel	150 psi
1020"	1020.75"	0.3125"	Steel	150 psi
1080"	1080.75"	0.3125"	Steel	150 psi
1140"	1140.75"	0.3125"	Steel	150 psi
1200"	1200.75"	0.3125"	Steel	150 psi
1260"	1260.75"	0.3125"	Steel	150 psi
1320"	1320.75"	0.3125"	Steel	150 psi
1380"	1380.75"	0.3125"	Steel	150 psi
1440"	1440.75"	0.3125"	Steel	150 psi
1500"	1500.75"	0.3125"	Steel	150 psi

CROSSING TABLE				
Drawing No.	Description	Status	Location	
X1	30.175 Government Road (100W) Allowance - Medium Grade Gravel Road	Re-issued Rev.1	Between S.W. 1 & S.E. 2-28WPM	
X2	20m. MTS Conduit No. 11149322 - Buried Telecom Cable	Re-issued Rev.1	S.E. 2-28WPM	
X3	Drain (6.1m. Wide)	Re-issued Rev.1	S.W. 2-2-28WPM	
X4	20m. MTS Conduit No. 11229702	Re-issued Rev.1	S.W. 2-2-28WPM	
X5	Buried Telecom Cable - Operator: MTS	Re-issued Rev.1	Between S.W. 2 & S.E. 2-28WPM	
X6	30.175 Government Road (100W) Allowance - Low Grade Gravel Road	Re-issued Rev.1	Between S.W. 2 & S.E. 2-28WPM	
X7	2 Wire Overhead Power Line - Operator: MB Hydro	Re-issued Rev.1	Between S.W. 2 & S.E. 2-28WPM	
X8	20m. Access Road - Operator: Legacy	Re-issued Rev.1	S.E. 2-28WPM	
X9	Trail	Re-issued Rev.1	S.E. 2-28WPM	
X10	Gamborough Creek	Re-issued Rev.1	S.W. 2-28WPM	
X11	30.175 Government Road (7N) Allowance - Low Grade Gravel Road	Re-issued Rev.1	Between N.W. 3 & S.W. 10-2-28WPM	
X12	Buried Telecom Cable - Operator: MTS	Re-issued Rev.1	Between N.W. 3 & S.W. 10-2-28WPM	
X13	Buried Telecom Cable - Operator: MTS	Re-issued Rev.1	Between N.W. 3 & S.W. 10-2-28WPM	
X14	2 Wire Overhead Power Line - Operator: MB Hydro	Re-issued Rev.1	Between N.W. 3 & S.W. 10-2-28WPM	
X15	5m. MTS Conduit No. 11229702	Re-issued Rev.1	S.W. 10-2-28WPM	
X16	Buried Telecom Cable - Operator: MTS	Re-issued Rev.1	Between S.E. 3 & S.W. 10-2-28WPM	
X17	30.175 Government Road (100W) Allowance - Medium Grade Gravel Road	Re-issued Rev.1	Between S.E. 3 & S.W. 10-2-28WPM	
X18	2 Wire Overhead Power Line - Operator: MB Hydro	Re-issued Rev.1	Between S.E. 3 & S.W. 10-2-28WPM	
X19	10m. RW - Operator: EOG	Not To Be Issued	S.E. 2-28WPM	
X20	20m. Access Road - Operator: EOG	Not To Be Issued	S.E. 2-28WPM	
X21	30.175 Government Road (100W) Allowance - Medium Grade Gravel Road	Re-issued Rev.1	Between S.E. 3 & S.W. 9-2-28WPM	
X22	4 Wire Overhead Power Line - Operator: MB Hydro	Re-issued Rev.1	Between S.E. 3 & S.W. 9-2-28WPM	
X23	Future Overhead Power Line Poles Present - Operator: MB Hydro	Re-issued Rev.1	Between S.E. 3 & S.W. 9-2-28WPM	
X24	20m. Access Road - Operator: EOG	Not To Be Issued	S.E. 2-28WPM	
X25	20m. RW - Operator: EOG	Not To Be Issued	S.W. 2-28WPM	

MLS AFFIDAVIT	
I certify that the survey represented by this plan is correct to the best of my knowledge.	
OPERATOR: EOG RESOURCES CANADA INC.	
Total length of right-of-way along posted boundary : 6.45 km Crossings associated with this drawing : 25 Crossing plans required : 21 (Crossing plans issued for foreign crossings only)	

LEGEND			
Placed Wooden Hub / Deflection Point shown thus:	△		
Survey Monuments Found shown thus:	●		
Well heads found shown thus:	○		
Marker Posts found shown thus:	⊕		
Counter Sunk Posts shown thus:	⊙		
Right - of - Way boundary shown thus:	—		

NOTES			
- All Marker Posts placed are 0.3 metres inside the GRA unless shown otherwise			
- Right-of-way to be filed is 20.0 metres in perpendicular width throughout unless shown otherwise.			
- Asmetries are grid and are referred to UTM projection, NAD 83 (Zone 14) datum and are derived by G.N.S.S.			
- To the best of our knowledge the closest known Residence is 0.40 km.			
- To the best of our knowledge the closest known Surface Development (Residence) is 0.40 km.			
- The closest urban center is the Town of Malta 11.5km, South of the pipe line.			

DISCLAIMER			
This plan represents the best information available at the time of survey. Altus Geomatics Manitoba and its employees take no responsibility for the location of any underground pipes, conduits, or facilities, whether shown on or omitted from this plan. Facilities shown on this plan are for informational purposes only. Prior to any construction on lease or access road, EOG RESOURCES CANADA INC., MTS Communications Inc., Manitoba Hydro, and Manitoba Hydro-Gas Operations MUST be contacted for location of any underground facilities that may exist.			

NO.	REVISIONS	INITIALS	DATE
2	Revised RW Route (S.W. 1/4 Sec. 3)		Dec. 6, 2012
1	Updated Plan Information		Sept. 6, 2012
0	Issued		Dec. 6, 2011

**CONSTRUCTION PLAN**  
of  
**RIGHT-OF-WAY**

In  
S. 1/2 Sec. 2  
S. 1/2 & N.W. 1/4 Sec. 3  
S. 1/2 Sec. 9  
S.W. 1/4 Sec. 10  
Twp. 2 - Rge. 28WPM

Rural Municipality of Edward  
2011 / 2012

Scale - 1 : 5000

AFE No: 11H0405  
Client File No: 9350 1020  
SEGMENT: 138765-C1  
Survey Date: June 23, 2011 to August 23, 2011.