



MANITOBA WATER SERVICES BOARD

MUNICIPALITY OF OAKLAND - WAWANESA (WAWANESA WASTEWATER STABILIZATION POND)

MWSB 1180

DRAWING LIST:

TITLE

KEY PLAN

GENERAL ARRANGEMENT PLAN

ACCESS ROAD - PLAN AND PROFILE

SECTIONS

DETAILS

DRAWING NO.

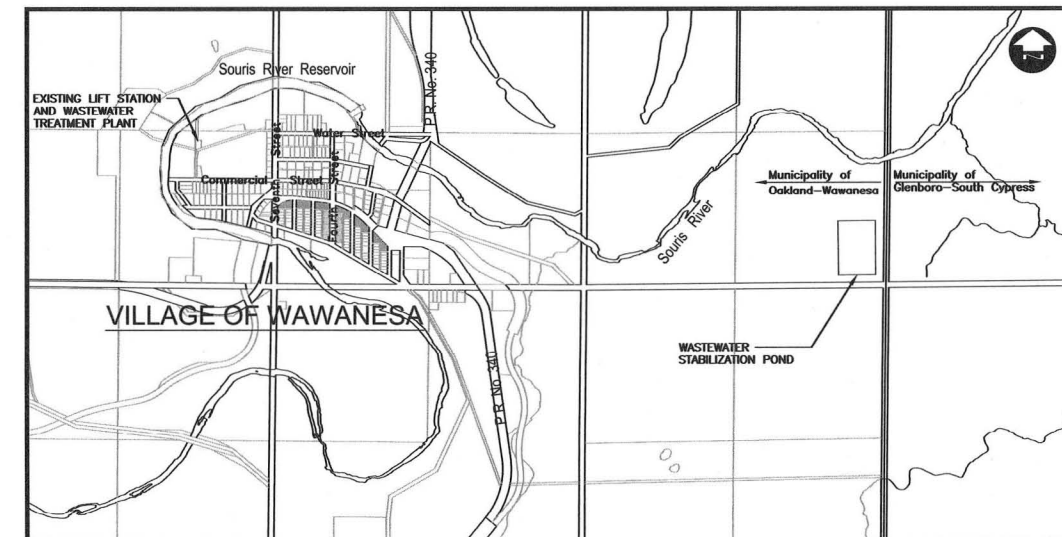
M-0

M-1

M-2

M-3

M-4



LOCATION MAP
1:20000

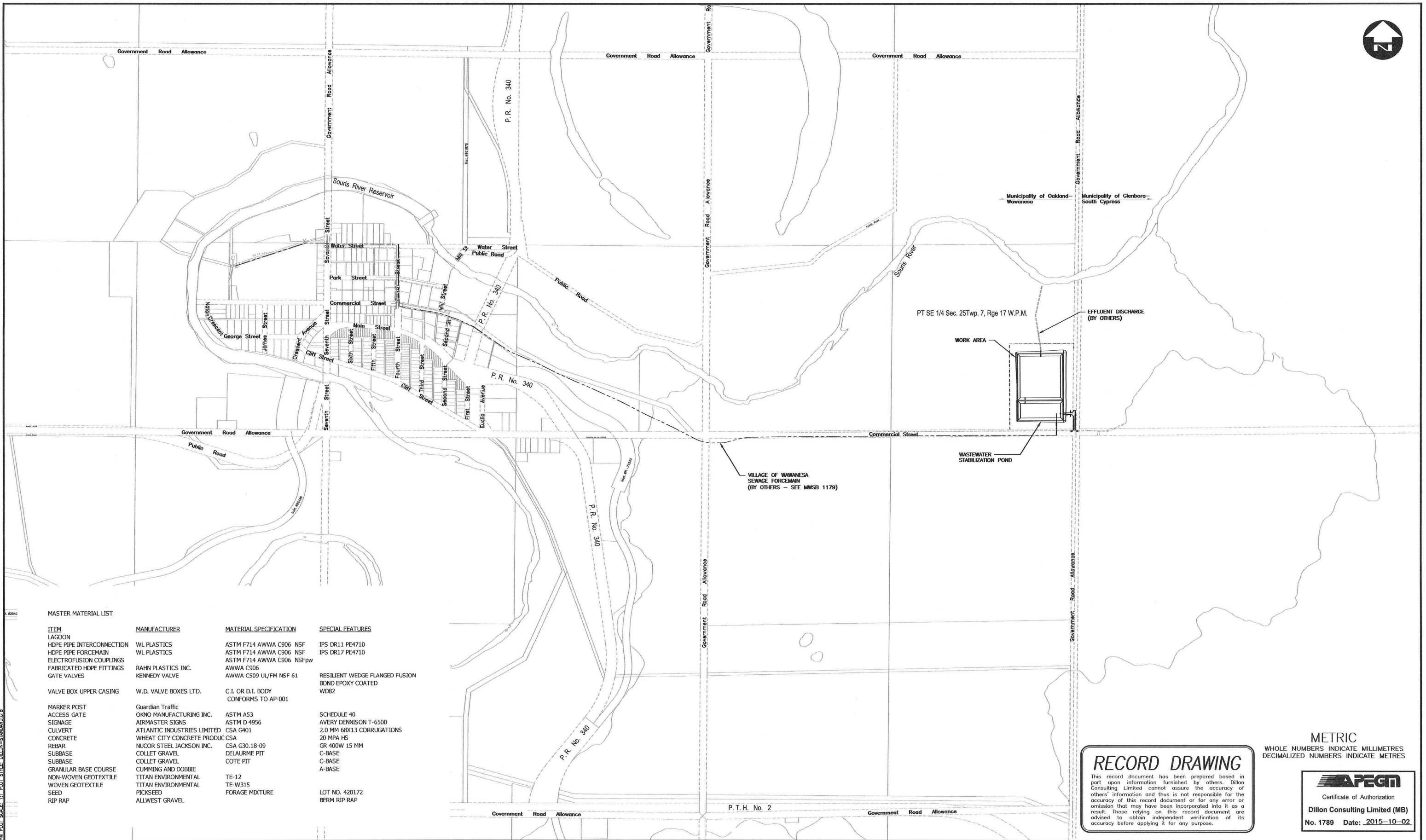
CONTRACTOR: EARTH MAX CONSTRUCTION INC.
CONSTRUCTION PERIOD: 2014 - OCTOBER - NOVEMBER - TOPSOIL STRIPPING
2015 - MAY - AUGUST - LAGOON CONSTRUCTION

RECORD DRAWING

This record document has been prepared based in part upon information furnished by others. Dillon Consulting Limited cannot assure the accuracy of others' information and thus is not responsible for the accuracy of this record document or for any error or omission that may have been incorporated into it as a result. Those relying on this record document are advised to obtain independent verification of its accuracy before applying it for any purpose.



OCTOBER 2015



MASTER MATERIAL LIST

ITEM	MANUFACTURER	MATERIAL SPECIFICATION	SPECIAL FEATURES
LAGOON			
HDPE PIPE INTERCONNECTION	WL PLASTICS	ASTM F714 AWWA C906 NSF	IPS DR11 PE4710
HDPE PIPE FORCEMAIN	WL PLASTICS	ASTM F714 AWWA C906 NSF	IPS DR17 PE4710
ELECTROFUSION COUPLINGS		ASTM F714 AWWA C906 NSFpw	
FABRICATED HDPE FITTINGS	RAHN PLASTICS INC.	AWWA C906	
GATE VALVES	KENNEDY VALVE	AWWA C509 UL/FM NSF 61	RESILIENT WEDGE FLANGED FUSION BOND EPOXY COATED WD82
VALVE BOX UPPER CASING	W.D. VALVE BOXES LTD.	C.I. OR D.I. BODY CONFORMS TO AP-001	
MARKER POST	Guardian Traffic		
ACCESS GATE	OKNO MANUFACTURING INC.	ASTM A53	SCHEDULE 40
SIGNAGE	AIRMASTER SIGNS	ASTM D 4956	AVERY DENNISON T-6500
CULVERT	ATLANTIC INDUSTRIES LIMITED	CSA G401	2.0 MM 68X13 CORRUGATIONS
CONCRETE	WHEAT CITY CONCRETE PRODUCT	CSA	20 MPA HS
REBAR	NUCOR STEEL JACKSON INC.	CSA G30.18-09	GR 400W 15 MM
SUBBASE	COLLET GRAVEL	DELAURME PIT	C-BASE
SUBBASE	COLLET GRAVEL	DELAURME PIT	C-BASE
GRANULAR BASE COURSE	CUMMING AND DOBBIE		A-BASE
NON-WOVEN GEOTEXTILE	TITAN ENVIRONMENTAL	TE-12	
WOVEN GEOTEXTILE	TITAN ENVIRONMENTAL	TE-W315	
SEED	PICKSEED	FORAGE MIXTURE	LOT NO. 420172
RIP RAP	ALLWEST GRAVEL		BERM RIP RAP

RECORD DRAWING

This record document has been prepared based in part upon information furnished by others. Dillon Consulting Limited cannot assure the accuracy of others' information and thus is not responsible for the accuracy of this record document or for any error or omission that may have been incorporated into it as a result. Those relying on this record document are advised to obtain independent verification of its accuracy before applying it for any purpose.

METRIC
WHOLE NUMBERS INDICATE MILLIMETRES
DECIMALIZED NUMBERS INDICATE METRES

APEGN
Certificate of Authorization
Dillon Consulting Limited (MB)
No. 1789 Date: 2015-10-02

Conditions of Use
Verify elevations and/or dimensions on drawing prior to use. Report any discrepancies to Dillon Consulting Limited.
Do not scale dimensions from drawing.
Do not modify drawing, re-use it, or use it for purposes other than those intended at the time of its preparation without prior written permission from Dillon Consulting Limited.



LEGEND - EXISTING

	PROPERTY LINE
	ROAD CENTRELINE
	DITCH
	CULVERT
	BOREHOLE LOCATION
	UTILITY POLE
	EXISTING DRAINAGE
	CURRENT GRADE

LEGEND - PROPOSED

	FORCEMAIN
	DISCHARGE/PERIMETER DITCH
	BARBED WIRE FENCE
	CULVERT
	GATE VALVE
	FINISHED GRADE
	PROPOSED DRAINAGE
	RIPRAP
	GRANULAR BASE
	COMMON BACKFILL
	COMPACTED CLAY LINER
	CONCRETE
	GEOTEXTILE



No.	REVISION	DATE	BY
3	RECORD	15/10/22	K.L.W.
2	TENDER	14/09/10	K.L.W.
1	REVIEW	14/08/15	K.L.W.

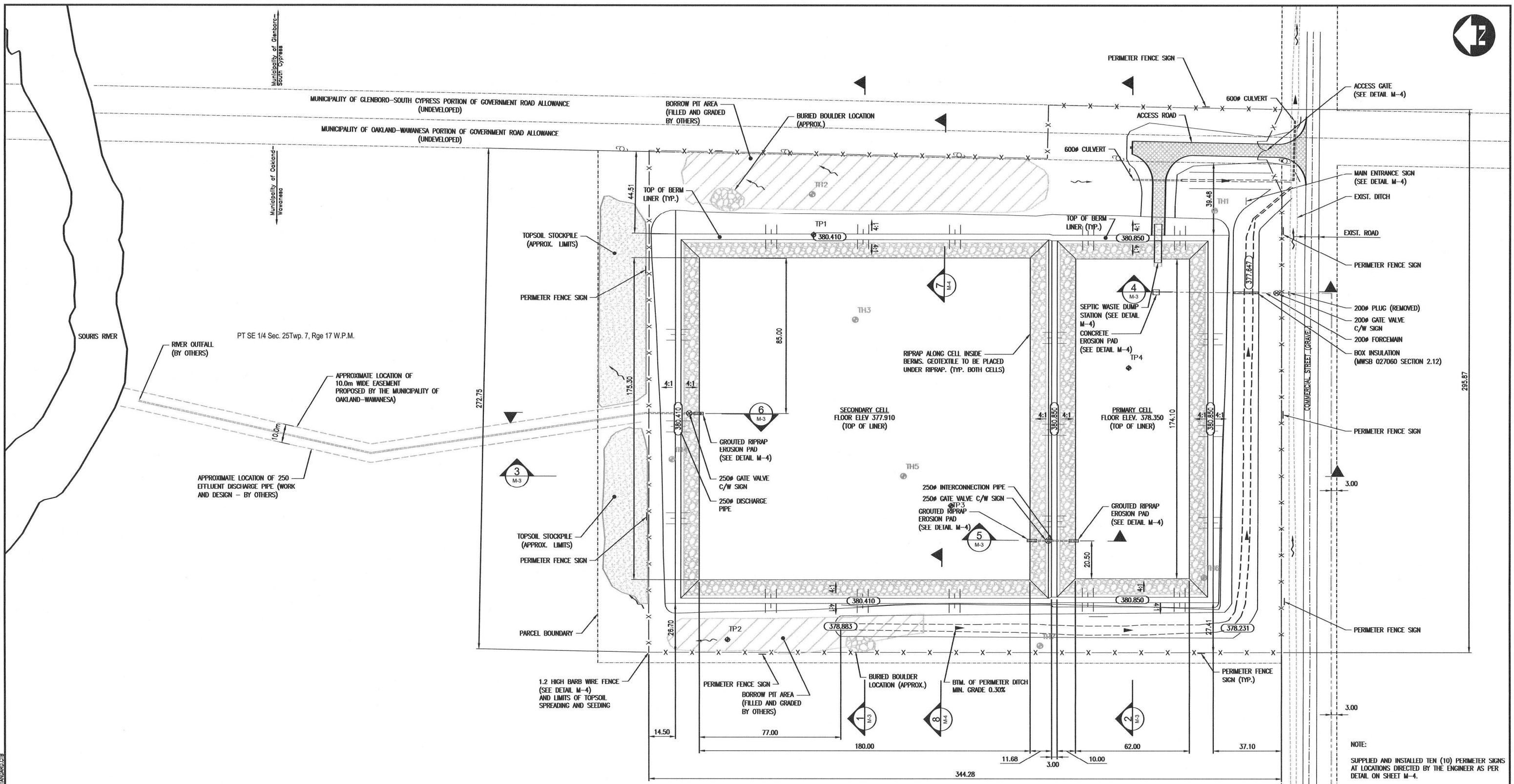
DESIGN	REVIEWED BY
W.J.B.	A.R.R.
DRAWN	CHECKED BY
D.B.C.	W.J.B.
DATE	SCALE
OCTOBER 2015	1:7500

MUNICIPALITY OF OAKLAND - WAWANESA
WAWANESA WASTEWATER STABILIZATION POND

KEY PLAN

PROJECT NO. 14-9746
SHEET NO. M-0

FILENAME: G:\CAD\149746\10-WATER_MASTER\1180-CONTRACT\MWB-1180-RECORD_DWG-149746-10-SITE-CON-KEY_PLAN.DWG PLOTTED BY: BALENE, HEATHER PLOT DATE: 2015-10-02 8:15:58 PM PLOT SCALE: 1:7500 STYLE: DILLON-STANDARD.CS



RECORD DRAWING

This record document has been prepared based in part upon information furnished by others. Dillon Consulting Limited cannot assure the accuracy of others' information and thus is not responsible for the accuracy of this record document or for any error or omission that may have been incorporated into it as a result. Those relying on this record document are advised to obtain independent verification of its accuracy before applying it for any purpose.

NOTE:
 SUPPLIED AND INSTALLED TEN (10) PERIMETER SIGNS AT LOCATIONS DIRECTED BY THE ENGINEER AS PER DETAIL ON SHEET M-4.
 BENTONITE SEALED PIPE PENETRATIONS THROUGH COMPACTED CLAY LINER.



Conditions of Use
 Verify elevations and/or dimensions on drawing prior to use. Report any discrepancies to Dillon Consulting Limited.
 Do not scale dimensions from drawing.
 Do not modify drawing, re-use it, or use it for purposes other than those intended at the time of its preparation without prior written permission from Dillon Consulting Limited.



LEGEND - EXISTING		LEGEND - PROPOSED	
---	PROPERTY LINE	---	FORCEMAIN
---	ROAD CENTRELINE	---	DISCHARGE/PERIMETER DITCH
---	DITCH	X	BARBED WIRE FENCE
---	CULVERT	---	CULVERT
⊕ TH1	BORHOLE LOCATION	⊕	GATE VALVE
⊕	UTILITY POLE	XXX.XXX	FINISHED GRADE
---	EXISTING DRAINAGE	---	PROPOSED DRAINAGE
XXX.XXX	CURRENT GRADE	---	RIPRAP
		---	GRANULAR BASE
		---	COMMON BACKFILL
		---	COMPACTED CLAY LINER
		---	CONCRETE
		---	GEOTEXTILE



No.	ISSUED FOR	DATE	BY
3	RECORD	15/10/02	K.L.W.
2	TENDER	14/08/10	K.L.W.
1	REVIEW	14/08/15	K.L.W.

DESIGN	REVIEWED BY	DATE	SCALE
W.J.B.	A.R.R.	OCTOBER 2015	1:1000
DRAWN	CHECKED BY		
D.B.C.	W.J.B.		

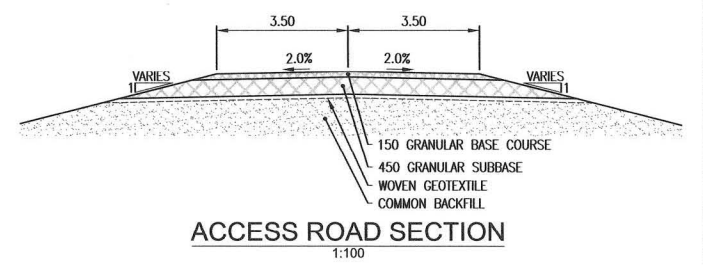
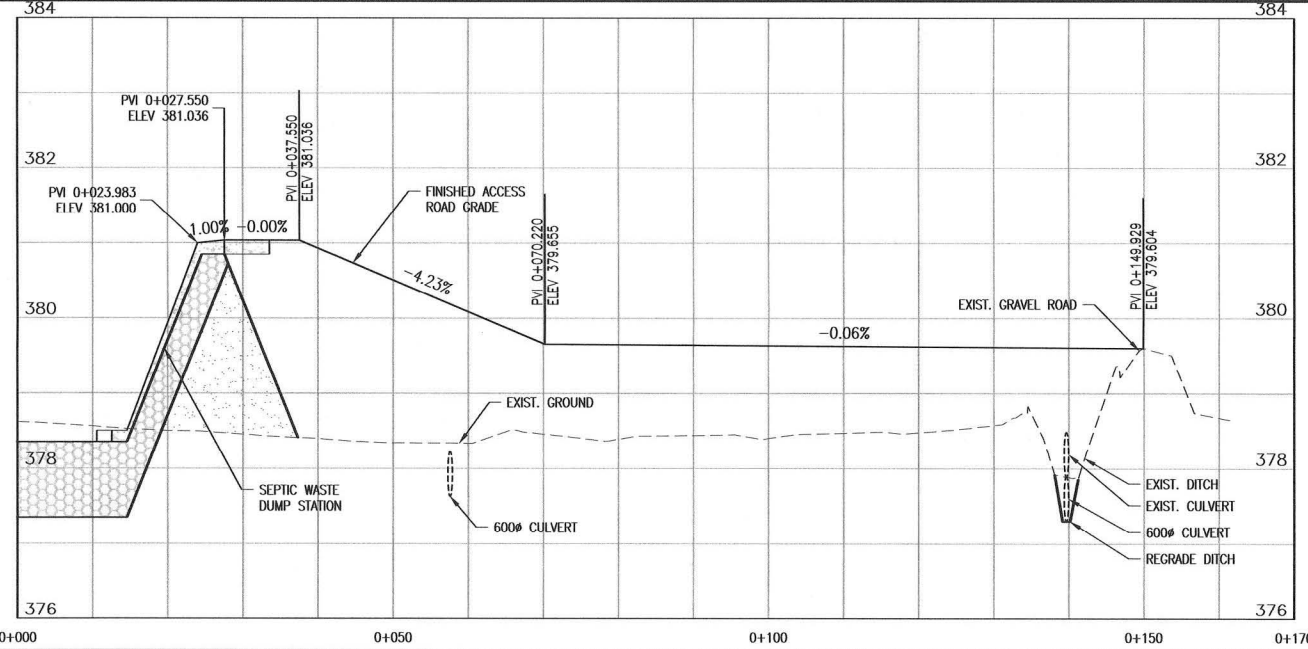
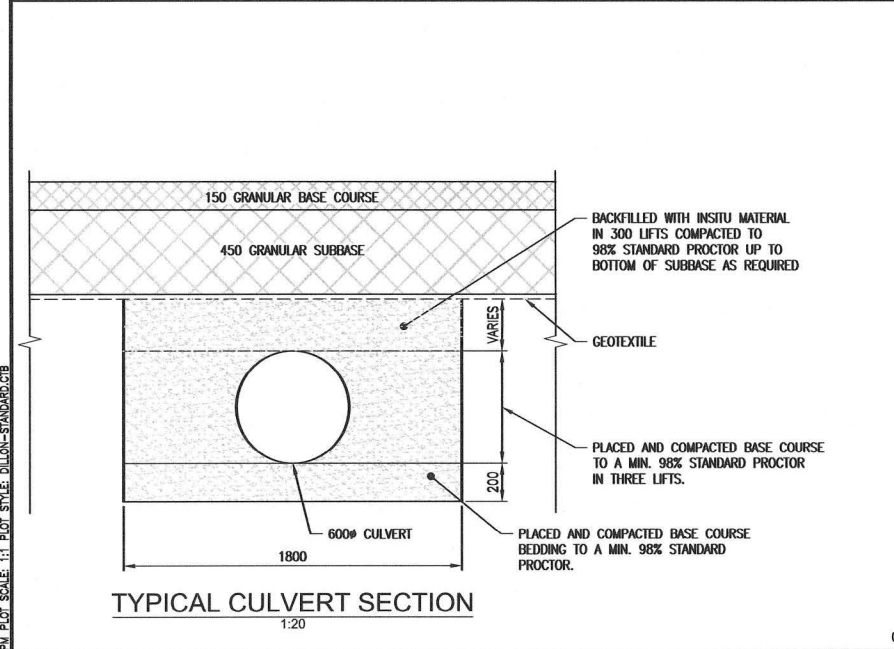
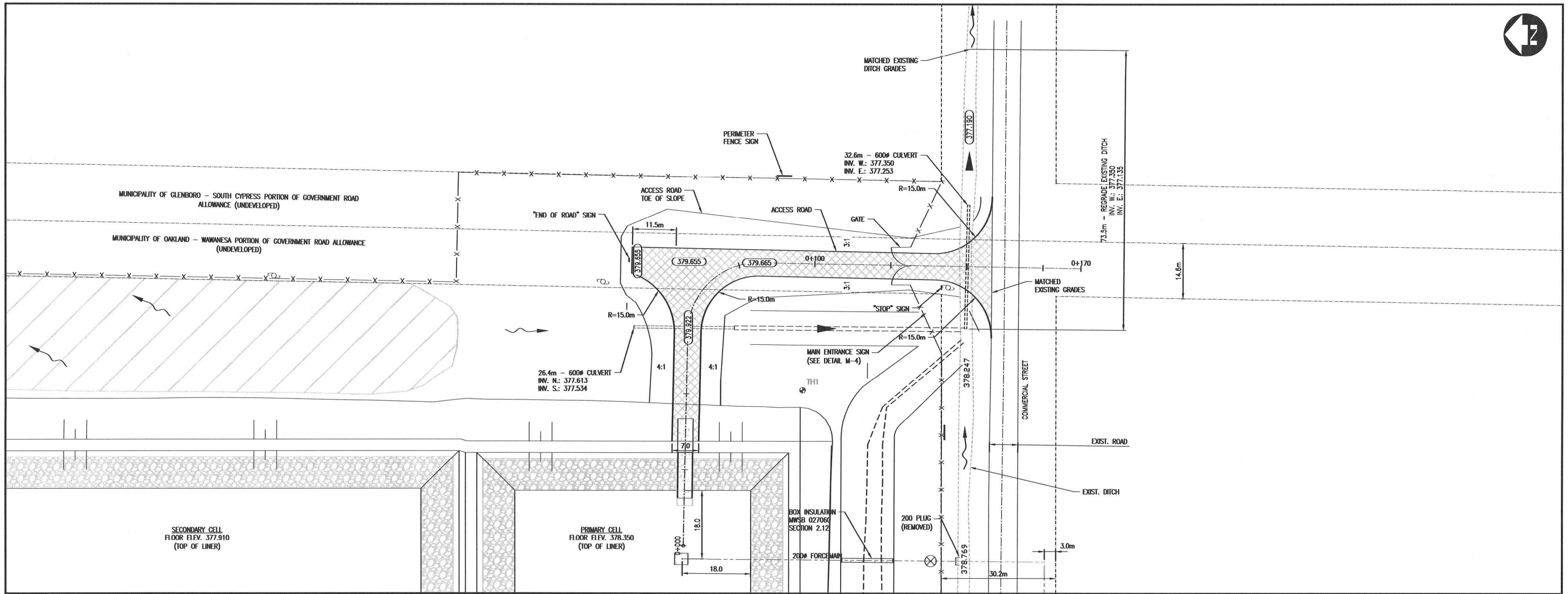
MUNICIPALITY OF OAKLAND - WAWANESA
 WAWANESA WASTEWATER STABILIZATION POND

GENERAL ARRANGEMENT PLAN

PROJECT NO.
14-9746

SHEET NO.
M-1

FILENAME: G:\CAD\149746\10-WATER\MSTES\CONTRACT\MWSB\1181-RECORD\DWGS\1-149746-10-SITE-CON-PLAN.DWG PLOTTED BY: BALLEINE, HEATHER
 PLOT DATE: 2015-10-22 08:19:15 PM PLOT SCALE: 1:1000 SITE: OAKLAND-WAWANESA



RECORD DRAWING
 This record document has been prepared based in part upon information furnished by others. Dillon Consulting Limited cannot assure the accuracy of others' information and thus is not responsible for the accuracy of this record document or for any error or omission that may have been incorporated into it as a result. Those relying on this record document are advised to obtain independent verification of its accuracy before applying it for any purpose.

APEGM
 Certificate of Authorization
 Dillon Consulting Limited (MB)
 No. 1789 Date: 2015-10-02

Conditions of Use
 Verify elevations and/or dimensions on drawing prior to use. Report any discrepancies to Dillon Consulting Limited.
 Do not scale dimensions from drawing.
 Do not modify drawing, re-use it, or use it for purposes other than those intended at the time of its preparation without prior written permission from Dillon Consulting Limited.



LEGEND - EXISTING

---	PROPERTY LINE
---	ROAD CENTRELINE
---	DITCH
---	CULVERT
⊕ TH1	BOREHOLE LOCATION
⊕	UTILITY POLE
---	EXISTING DRAINAGE
XXX.XXX	CURRENT GRADE

LEGEND - PROPOSED

---	FORCEMAIN
---	DISCHARGE/PERIMETER DITCH
X	BARBED WIRE FENCE
---	CULVERT
⊕	GATE VALVE
XXX.XXX	FINISHED GRADE
---	PROPOSED DRAINAGE
---	RIPRAP
---	GRANULAR BASE
---	COMMON BACKFILL
---	COMPACTED CLAY LINER
---	CONCRETE
---	GEOTEXTILE



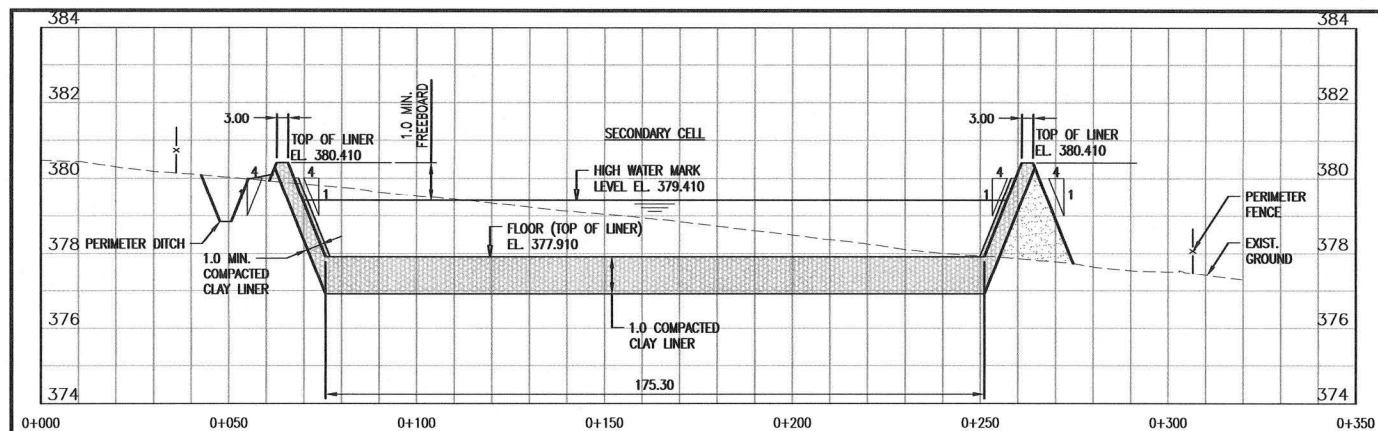
DESIGN	W.J.B.	REVIEWED BY	A.R.R.	
DRAWN	D.B.C.	CHECKED BY	W.J.B.	
DATE	15/10/20	DATE	OCTOBER 2015	
SCALE	1:500 H, 1:50 V.	SCALE		
NO.	3	RECORD	15/10/20	K.L.W.
	2	TENDER	14/09/10	K.L.W.
	1	REVIEW	14/09/15	K.L.W.
		ISSUED FOR		

**MUNICIPALITY OF OAKLAND - WAWANESA
 WAWANESA WASTEWATER STABILIZATION POND**

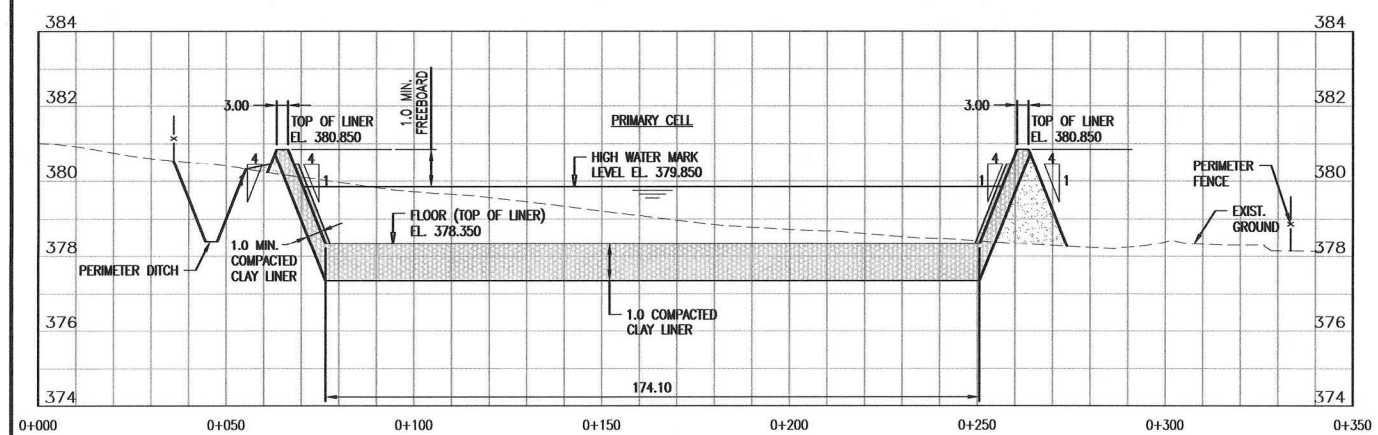
**ACCESS ROAD
 PLAN AND PROFILE**

PROJECT NO. 14-9746
 SHEET NO. M-2

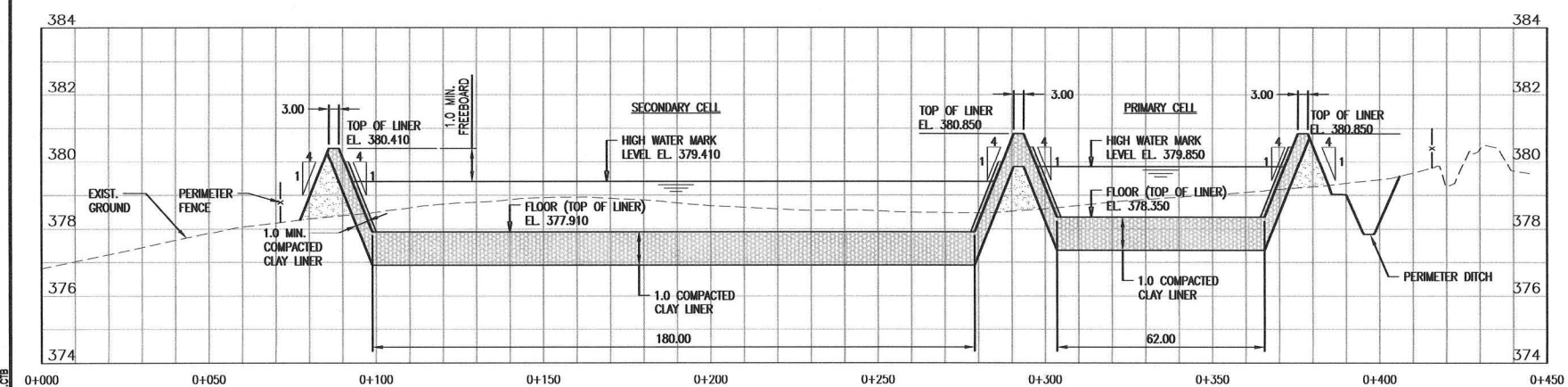
FILENAME: G:\CAD\149746\10-WATER_WASTE\10-CONTRACT\DWGS\1180-RECORD\DWGS\1180-149746-10-SITE-CON-ACCESS ROAD.DWG PLOTTED BY: BAILEINE, HEATHER
 PLOT DATE: 2015-10-02 8:15:19 PM PLOT SCALE: 1:1 PLOT STYLE: DILLON_STANDARD.CTB



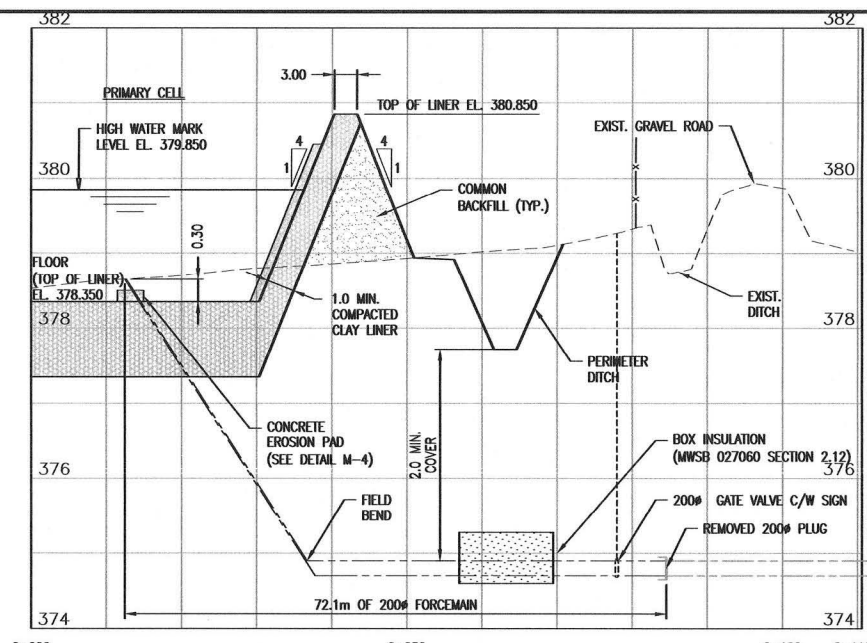
SECTION 1
1:1000 H. 1:100 V.



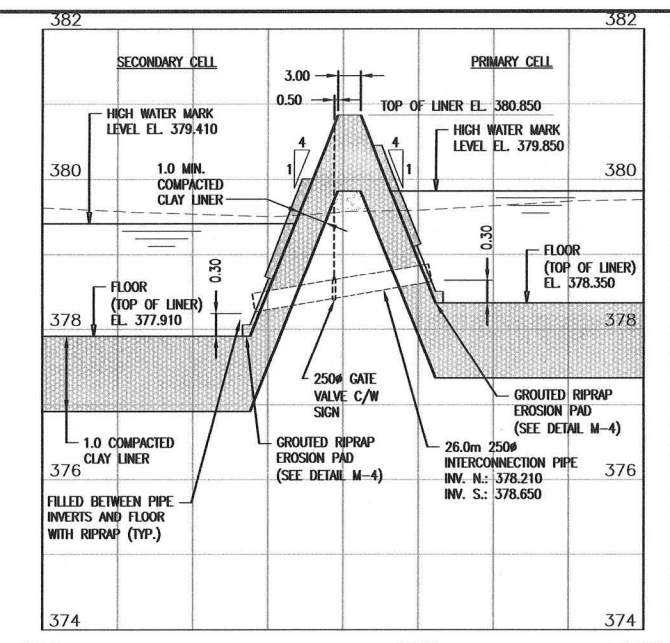
SECTION 2
1:1000 H. 1:100 V.



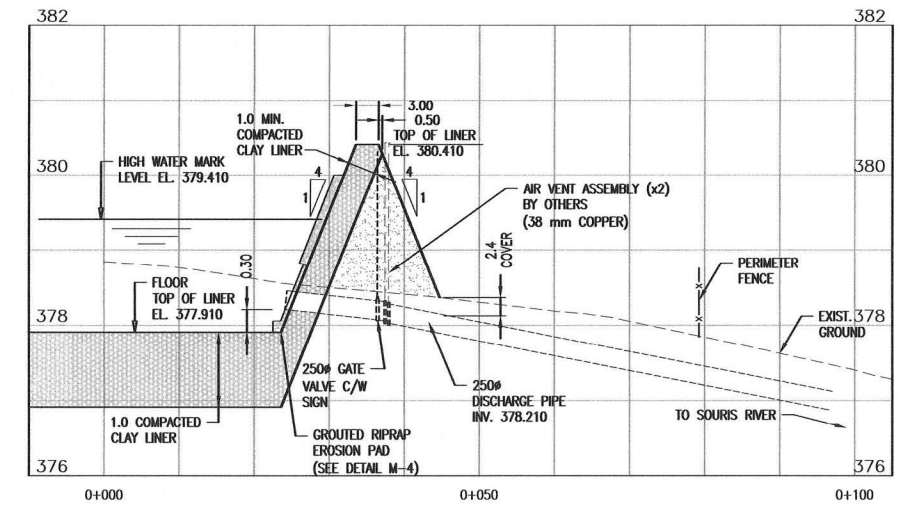
SECTION 3
1:1000 H. 1:100 V.



SECTION 4
1:500 H. 1:50 V.

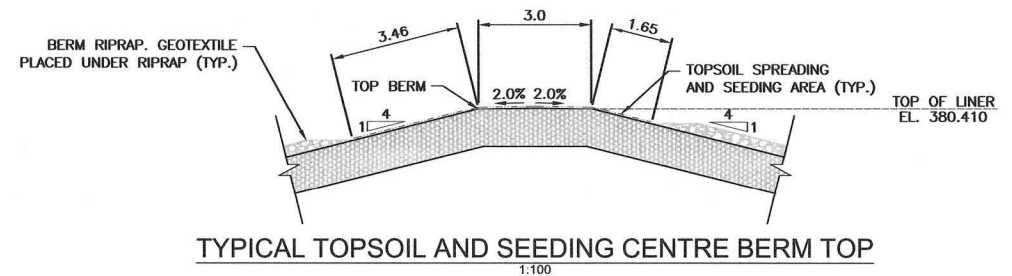


SECTION 5
1:500 H. 1:50 V.



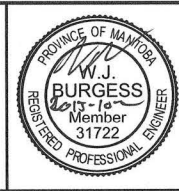
NOTE: EFFLUENT DISCHARGE PIPE AIR VENTING AND RISER OUTFALL DESIGN AND CONSTRUCTION BY OTHERS INFORMATION PROVIDED FOR REFERENCE ONLY

SECTION 6
1:500 H. 1:50 V.



RECORD DRAWING

This record document has been prepared based in part upon information furnished by others. Dillon Consulting Limited cannot assure the accuracy of others' information and thus is not responsible for the accuracy of this record document or for any error or omission that may have been incorporated into it as a result. Those relying on this record document are advised to obtain independent verification of its accuracy before applying it for any purpose.



LEGEND - EXISTING

---	PROPERTY LINE
---	ROAD CENTRELINE
---	DITCH
---	CULVERT
TH1	BORHOLE LOCATION
U	UTILITY POLE
---	EXISTING DRAINAGE
XXX.XXX	CURRENT GRADE

LEGEND - PROPOSED

---	FORCE MAIN
---	DISCHARGE/PERIMETER DITCH
X	BARBED WIRE FENCE
---	CULVERT
GV	GATE VALVE
XXX.XXX	FINISHED GRADE
---	PROPOSED DRAINAGE
---	RIPRAP
---	GRANULAR BASE
---	COMMON BACKFILL
---	COMPACTED CLAY LINER
---	CONCRETE
---	GEOTEXTILE



DESIGN	W.J.B.	REVIEWED BY	A.R.R.
DRAWN	D.B.C.	CHECKED BY	W.J.B.
DATE	15/10/15	DATE	OCTOBER 2015
SCALE	K.L.W.	SCALE	AS NOTED
NO.	3	ISSUED FOR	RECORD
	2		TENDER
	1		REVIEW

MUNICIPALITY OF OAKLAND - WAWANESA
WAWANESA WASTEWATER STABILIZATION POND

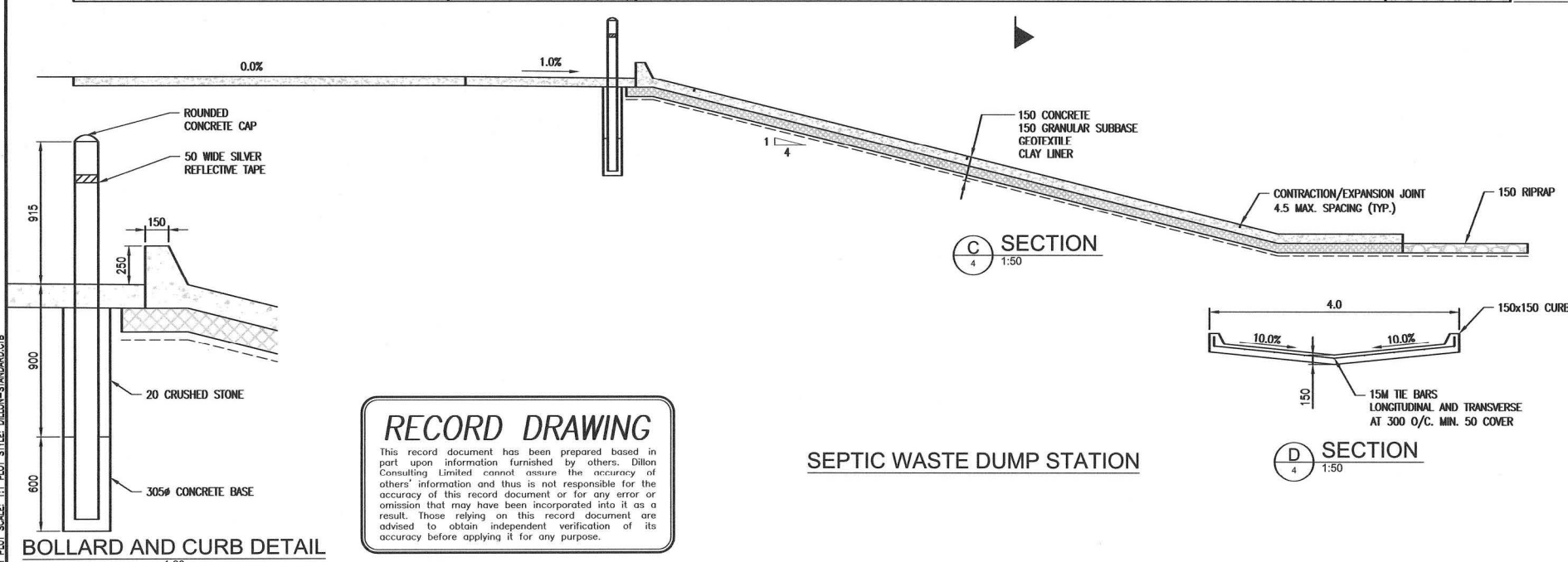
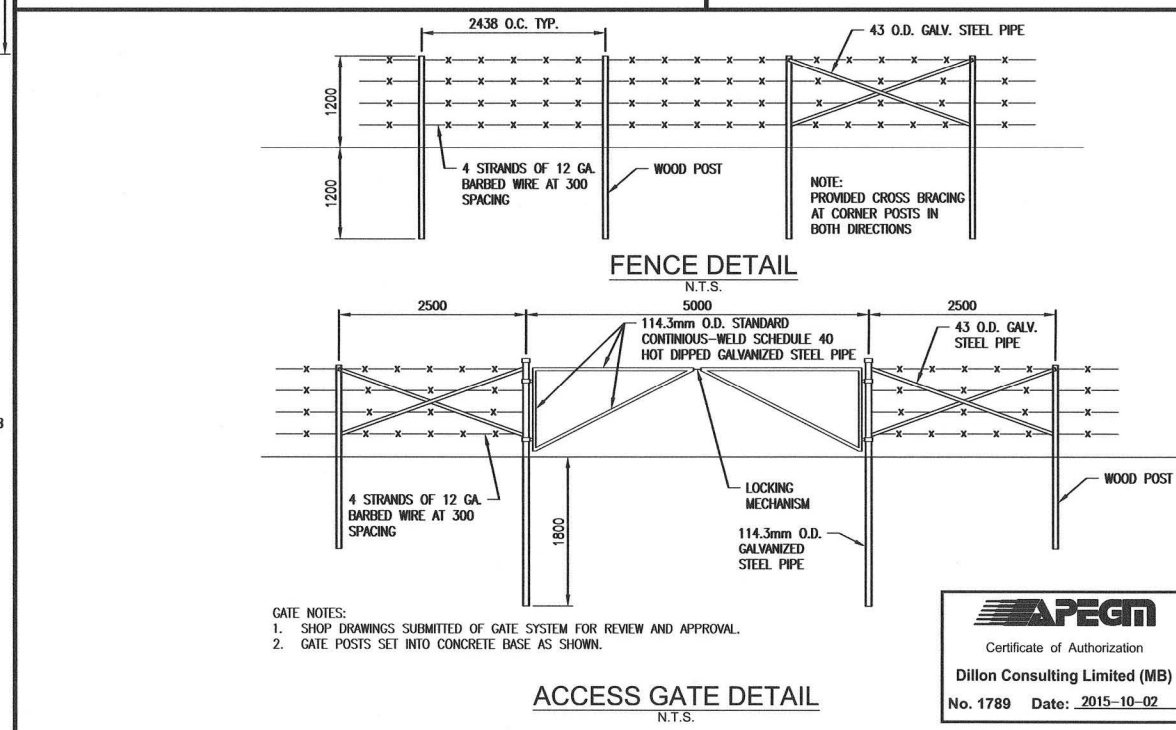
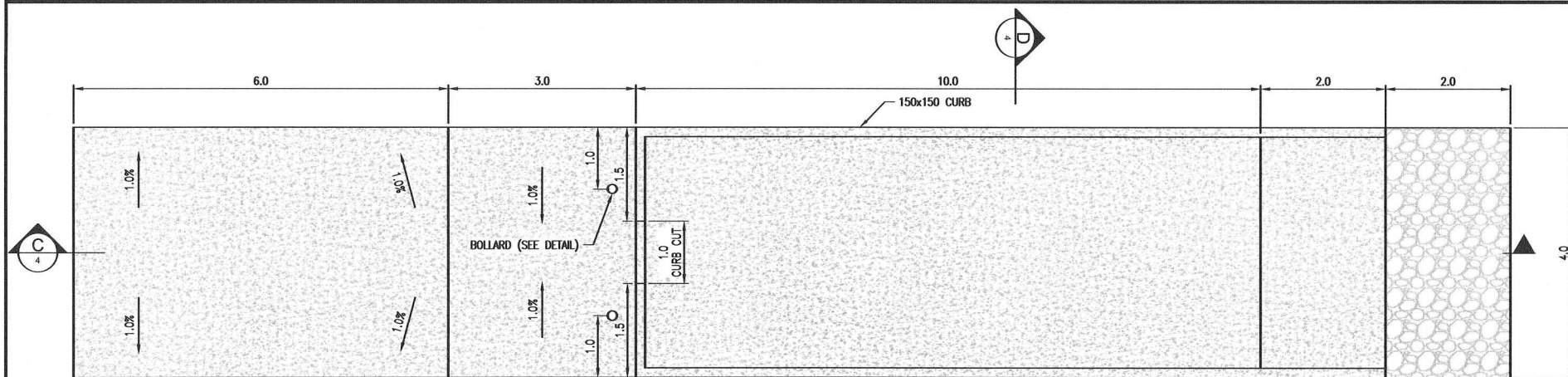
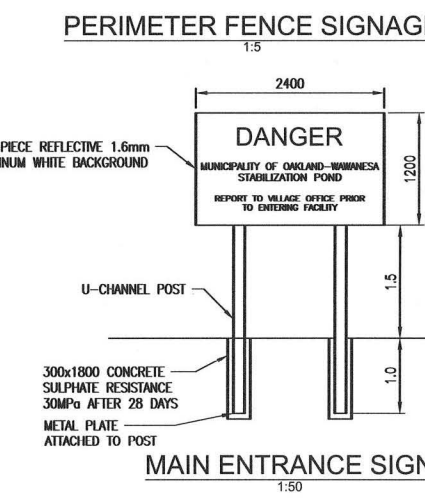
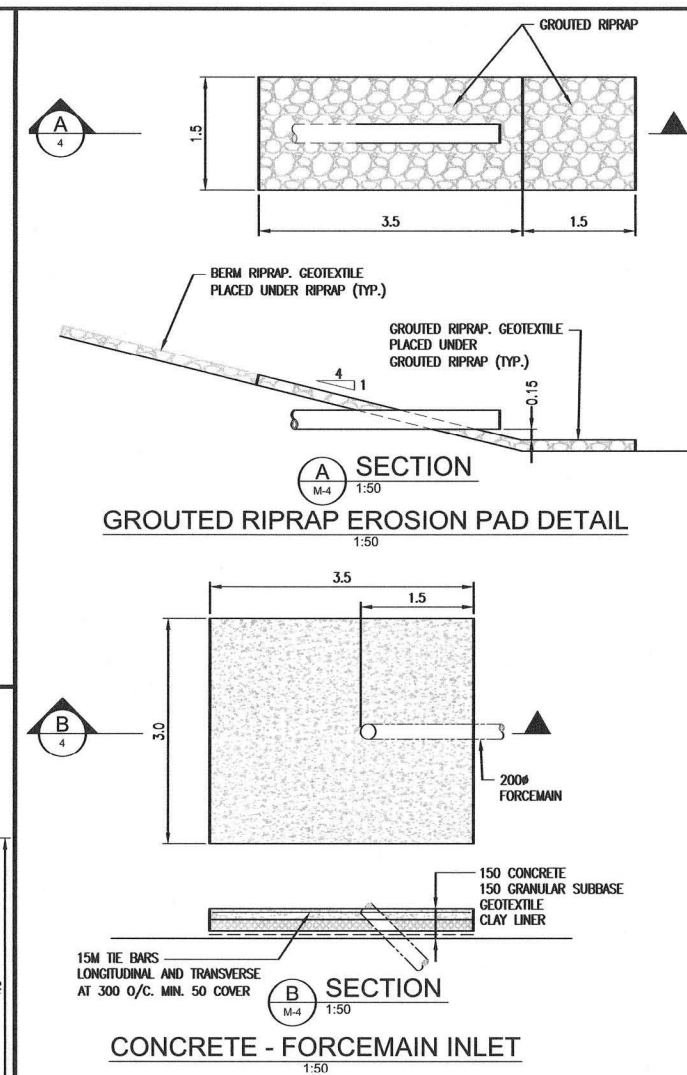
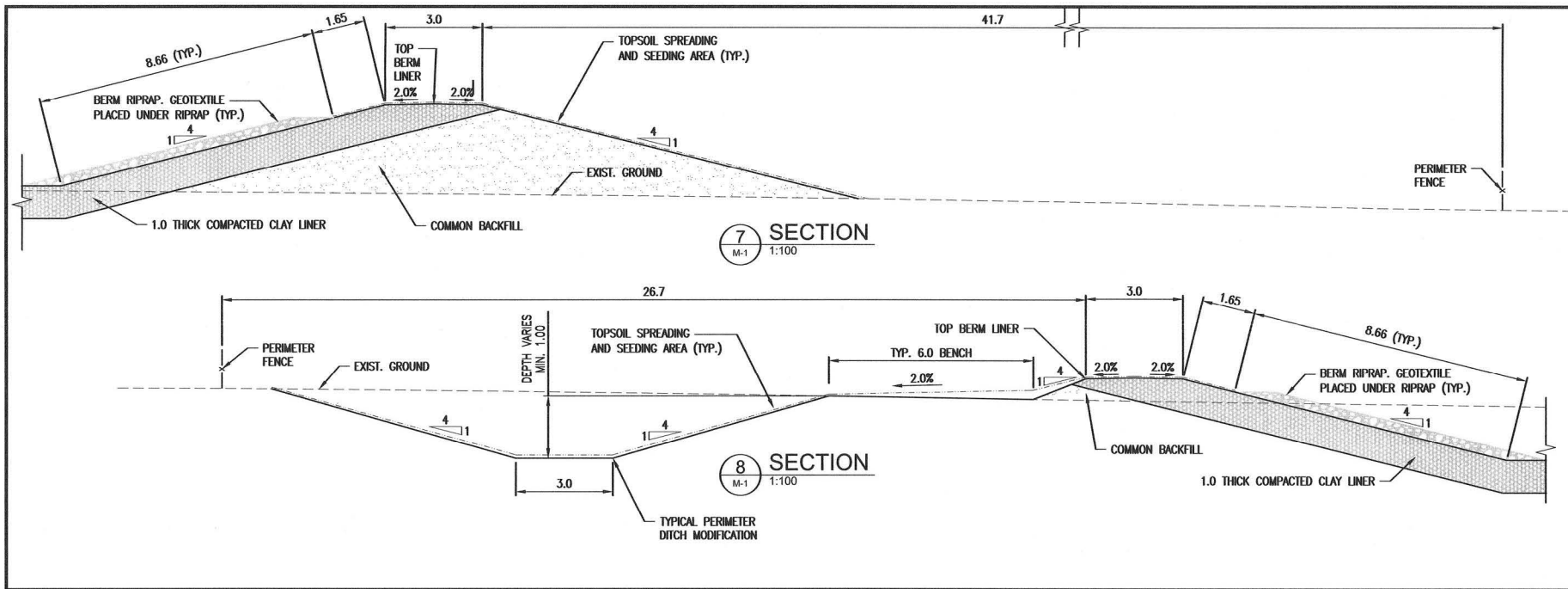
PROJECT NO. 14-9746

SHEET NO. **M-3**

SECTIONS

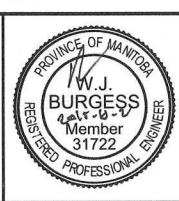


FILENAME: C:\CAD\149746\10-WATER_MASTER\10-CONTRACT\MISB.1180\RECORD_DWG\14-9746-10-SITE-CON-SECTIONS AND DETAILS.DWG PLOTTED BY: BALLENE, HEATHER PLOT DATE: 2015-10-22 8:52:43 PM PLOT SCALE: 1:1 PLOT STYLE: DILLON_STANDARD.CBT



RECORD DRAWING
 This record document has been prepared based in part upon information furnished by others. Dillon Consulting Limited cannot assure the accuracy of others' information and thus is not responsible for the accuracy of this record document or for any error or omission that may have been incorporated into it as a result. Those relying on this record document are advised to obtain independent verification of its accuracy before applying it for any purpose.

Conditions of Use
 Verify elevations and/or dimensions on drawing prior to use. Report any discrepancies to Dillon Consulting Limited.
 Do not scale dimensions from drawing.
 Do not modify drawing, re-use it, or use it for purposes other than those intended at the time of its preparation without prior written permission from Dillon Consulting Limited.



LEGEND - EXISTING	
---	PROPERTY LINE
---	ROAD CENTRELINE
---	DITCH
---	CULVERT
⊕ TH1	BOREHOLE LOCATION
⊕	UTILITY POLE
---	EXISTING DRAINAGE
XXX.XXX	CURRENT GRADE

LEGEND - PROPOSED	
---	FORCEMAIN
---	DISCHARGE/PERIMETER DITCH
X	BARBED WIRE FENCE
---	CULVERT
⊕	GATE VALVE
XXX.XXX	FINISHED GRADE
---	PROPOSED DRAINAGE
---	RIPRAP
---	GRANULAR BASE
---	COMMON BACKFILL
---	COMPACTED CLAY LINER
---	CONCRETE
---	GEOTEXTILE



No.	ISSUED FOR	DATE	BY
3	RECORD	15/10/22	K.L.W.
2	TENDER	14/09/10	K.L.W.
1	REVIEW	14/09/15	K.L.W.

DESIGN	REVIEWED BY	DATE	SCALE
W.J.B.	A.R.R.	OCTOBER 2015	AS NOTED
D.B.C.	W.J.B.		

**MUNICIPALITY OF OAKLAND - WAWANESA
 WAWANESA WASTEWATER STABILIZATION POND**

PROJECT NO. 14-9746
 SHEET NO. M-4

DETAILS

APEGN
 Certificate of Authorization
 Dillon Consulting Limited (MB)
 No. 1789 Date: 2015-10-02

FILENAME: G:\OAK\149746\10-WATER\MSTEV\CONTRACT\MISB\1180-RECORD\DWGS\4-149746-10-SITE-CON-DETAILS.DWG PLOTTED BY: BALLEINE, HEATHER
 PLOT DATE: 2015-10-02 8:54:52 AM PLOT SCALE: 1:1.00 STYLE: DILLON-STANDARD.CSB