

**PROVINCIAL PARKS ENDOWMENT FUNDS**

**Annual Report**



**2021/22**

**2021/22**

Manitoba Environment,  
Climate and Parks

Parks and Trails



# Table of Contents

---

Introduction .....	3
Goals and Objectives.....	4
Key Project Categories .....	5
Funds Revenue .....	6
2021/22 Projects Summary.....	7
2021/22 Individual Projects .....	8
Provincial (Multiple Parks)	
Accessible Picnic Tables.....	8
Asessippi Provincial Park	
Yurt Improvements.....	9
Bakers Narrows Provincial Park	
Main Beach Upgrades .....	10
Birds Hill Provincial Park	
Bur Oak Trail – Wheelchair Access .....	11
Clearwater Provincial Park	
Pioneer Bay – Accessibility Trails.....	12
Duck Mountain Provincial Park	
Childs Lake Campground – Electrical Upgrades .....	13
Hecla-Grindstone Provincial Park	
Blue Streak II – Open Air Shelter .....	14
Paint Lake Provincial Park	
Yurt Improvements.....	15
Pisew Falls Provincial Park	
Main Entrance Sign Replacement .....	16
Stephenfield Provincial Park	
Stephenfield Campground – Electrical Upgrades.....	17
Turtle Mountain Provincial Park	
Boardwalk Replacement.....	18
Refurbish Pit Privies.....	19
Whiteshell Provincial Park	
Mantario – Caribou Lake Furniture .....	20
Bear Lake Trail Improvements.....	21
Winnipeg Beach Provincial Park	
Boat Ramp Extension .....	22

## INTRODUCTION

On April 22, 2021, Manitoba announced the creation of a \$20M Provincial Parks Endowment Fund to support park improvements and programming in perpetuity. The fund also encouraged private philanthropic contributions and enabled the province to follow the wishes of donors who want to leave a legacy of support for Manitoba's provincial parks.

The Provincial Parks Endowment Funds (collectively referred to as "PPEF") are a series of funds established through agreements with The Winnipeg Foundation who will manage and provide oversight of the funds. Based on present fund values, up to \$1.1M in additional, net new revenue to government is expected to be generated annually once fully established. The endowment fund will assist in offsetting the changing demands and increased costs of enhancing and sustaining provincial parks, including critical infrastructure. It is not designed to replace existing base provincial park funding.

The PPEF portfolio is made up of the following funds:

- The Provincial Park Endowment Fund (General)
- The Provincial Park Endowment Incentive Fund
- Birds Hill Provincial Park Endowment Fund
- Hecla-Grindstone Provincial Park - Cheryle D. Christensen Endowment Fund (established in 2018)
- Hecla-Grindstone Provincial Park Endowment Fund
- Clearwater Lake Provincial Park Endowment Fund
- Paint Lake Provincial Park Endowment Fund
- Spruce Woods Provincial Park Endowment Fund
- Upper Fort Garry Heritage Provincial Park Endowment Fund
- Whiteshell Provincial Park Endowment Fund

The funds were all established with initial capital contributions from government, with the exception of the Cheryle D. Christensen Fund, that was established through a generous private donation from her and was supplemented with an additional \$500k from the Parks Endowment Incentive Fund.

Annual revenue produced by each fund may be used to support projects that include, but are not limited to:

- Development and maintenance of trails, boardwalks, and associated infrastructure;
- Public use facilities such as amphitheaters, shelters, day use sites, playground equipment, docks and launches;
- Park road maintenance;
- Habitat restoration and enhancement;
- Historical assets and cultural sites;
- Infrastructure to support programming;
- Modern machinery and operational equipment;
- Municipal servicing infrastructure;
- Campground enhancements; and
- Interpretive infrastructure to support programming.
- Maintenance projects that extend and/or enhance the infrastructure, facilities, or assets outlined above are eligible project costs.

Project coordination, administration, delivery, and funds disbursement is managed by Manitoba Parks - Operations and Development – Provincial Parks Endowment Fund Coordinator.

## GOALS AND OBJECTIVES

The projects or activities undertaken with endowment fund allocations should generally contribute to the following outcomes:

- Conserve and preserve areas of geological, cultural and ecological significance.
- Enhancing ecological integrity, conserving biological diversity, and preserving sustainable wildlife and fish populations;
- Increasing public use by improving public safety, enhancing visitor accessibility, and enriching experiences for park visitors;
- Improving water quality through decreasing nutrients and other pollutants entering waterways; and
- Increasing resilience to climate change through implementing positive adaptive and mitigative strategies.

## KEY PROJECT CATEGORIES

In response to public feedback and identified Provincial Parks needs a set of key project categories were defined to support and enhance visitor experiences. The defined project categories noted below align with public priorities / expectations and will provide guidance in long-term activities that support the sustainability of provincial parks (including critical infrastructure) for current and future generations.

<b>Project Categories</b>
Development and maintenance of trails, boardwalks and associated infrastructure
Public-use facilities like; Amphitheatres, Shelters, Day use sites, Playground, Docks & Launches
Park road maintenance
Habitat restoration and enhancement
Historical assets and cultural sites
Infrastructure to support programming
Modern machinery and operational equipment
Municipal servicing infrastructure
Campground enhancements
Interpretive infrastructure to support programming

## REVENUE

Fund	Amount (\$)	
	Oct 1, 2020 – Sept 30, 2021	Oct 1, 2021 – Sept 30, 2022
Provincial Park Endowment Fund		\$515,162
Birds Hill Provincial Park Fund		49,844
Clearwater Lake Provincial Park Fund		49,844
Hecla-Grindstone Provincial Park Fund		49,844
Hecla-Grindstone Provincial Park Fund - Cheryle D. Christensen <sup>1</sup>	63,351	73,569
Paint Lake Provincial Park Fund		49,844
Spruce Woods Provincial Park Fund		49,844
Upper Fort Garry Heritage Provincial Park Fund <sup>2</sup>		TBD
Whiteshell Provincial Park Fund		49,844
<b>Total</b>	<b>63,351</b>	<b>\$863,607</b>
Provincial Park Endowment Incentive Fund <sup>3</sup>		\$231,823

Notes:

1. The Hecla-Grindstone Provincial Park – Cheryle D. Christensen Fund was established in 2020 with the estate gift. No investments were made in 2020. Total funds available = \$136,920.
2. The Upper Fort Garry Fund was established in the fall 2021. Revenues to be determined.
3. The Provincial Park Endowment Incentive Fund revenue is designed to match gifts received and capitalize funds into the appropriate fund.

## 2021/22 PROJECTS - SUMMARY

<b>Park</b>	<b>Project</b>	<b>Amount (000's)</b>
Various	Accessible Picnic Tables	\$25,798.21
Asessippi	Yurt Improvements	36,705.55
Bakers Narrows	Main Beach Upgrades	9,901.46
Birds Hill	Bur Oak Trail - Wheel Chair Accessible Trail	14,901.68
Clearwater	Pioneer Bay - Accessibility Trails	3,907.75
Duck Mountain	Childs Lake Campground - Electrical Upgrades	60,000.00
Hecla-Grindstone	Hecla Blue Streak - Open-air shelter	88,880.00
Paint Lake	Yurt Improvements	23,494.25
Pisew Falls	Sign Replacement	21,608.65
Stephenfield	Stephenfield Campground - Electrical Upgrades	25,999.88
Turtle Mountain	Disappearing Lakes - Boardwalk replacement	42,367.29
	Disappearing Lakes – Pit Privies	5,009.94
Whiteshell	Mantario - Caribou Lake Furniture	40,837.52
	Bear Lake - Trail Improvements	73,265.94
Winnipeg Beach	Boat Ramp Extension	46,995.00
	<b>Total</b>	<b>\$ 519,673.12</b>

**Funding:** Parks Endowment Fund (General)  
**Project Cost:** \$25,798.21

**Location:** Province Wide

The department provides infrastructure throughout the province to support recreational opportunities for all visitors to provincial parks. Whether it is at the end of a trail in Whiteshell Provincial Park, or a campground in one of Manitoba’s northern parks, providing accessible picnic tables and clean sites enhance public experiences and enjoyment of our parks.

The accessible picnic tables project includes the purchase of **101** picnic tables to provide areas for families, friends, and campers to meet and enjoy to great outdoors.

The project falls under the category of infrastructure to support programming.




---

Project Category	Amount (\$)
Infrastructure to support programming	\$25,798.21



**Funding:** Parks Endowment Fund (General)  
**Project Cost:** \$36,705.55

**Location:** Asessippi Provincial Park

The department provides comfort camping to visitors in many parks through the use of yurts. These accommodations come fully furnished and ready to enjoy. Yurts are fixed facilities with large, fabric-sided walls and a dome roof including windows, skylights and lockable doors. The yurts also come equipped with electricity, heaters and lighting.



The yurt improvement project included:

- replacement of doors (2)
- new yurt skins (3)

The project falls under the category of campground enhancements in provincial parks.




---

Project Category	Amount (\$)
Campground enhancements	\$36,705.55

**Funding:** Parks Endowment Fund (General)  
**Project Cost:** \$9,901.46

**Location:** Bakers Narrows Provincial Park

Bakers Narrows Provincial Park is located approximately 19 kilometres south of Flin Flon in the northern park region of Manitoba. The park is ideal for camping, hiking, fishing, and boating. There are also playgrounds, boat launches and beaches providing swimming opportunities for visitors to enjoy.

The main beach upgrades project included the placement of weeping tile, rock, and sand to build up the area to address ongoing flooding issues. Bike stands were included for the accessibility of the beach users.

The project falls under the category of infrastructure to support programming in provincial parks.



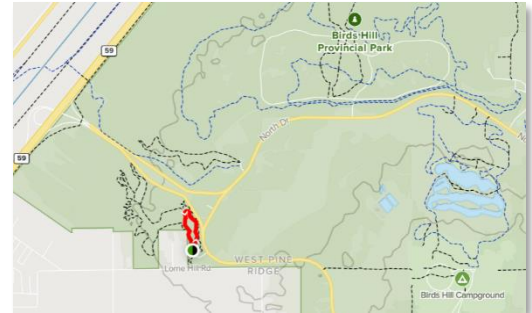
---

<b>Project Category</b>	<b>Amount (\$)</b>
Infrastructure to support programming	\$9,901.46

**Funding:** Parks Endowment Fund (General)  
**Project Cost:** \$14,901.68

**Location:** Birds Hill Provincial Park

The Bur Oak hiking trail is a 1.0 kilometre stretch located near Springfield in Birds Hill Provincial Park. The trail features forested areas with a wide variety of birds and wildlife viewing opportunities. The trail offers a number of activity options and is best used from March until October.



The Bur Oak Trail – Wheel Chair accessible project included repairing the 1.0 km trail and upgrading facilities such as pit privies to make it more accessible for wheel chairs.



The project falls under the category of development and maintenance of trails, boardwalks and associated infrastructure in provincial parks.

---

<b>Project Category</b>	<b>Amount (\$)</b>
Development and maintenance of trails, boardwalks and associated infrastructure	\$14,901.68

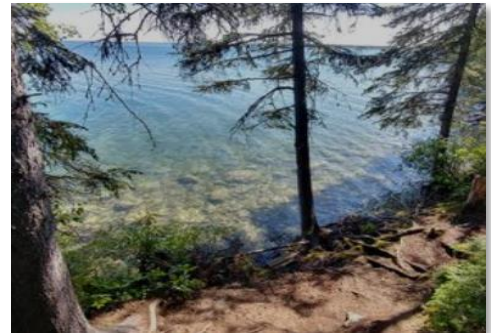
**Funding:** Parks Endowment Fund (General)  
**Project Cost:** \$3,907.75

**Location:** Clearwater Provincial Park

Pioneer Bay is located in Clearwater Provincial Park northeast of the Pas in northern Manitoba. The area provides visitors with camping, hiking, swimming, fishing, boating and other recreational activities.

The Pioneer Bay project included upgrade to the beach access trails with gravel/small culverts, and access improvements were made to the adjacent washroom building and accessible parking.

The project falls under the category of development and maintenance of trails, boardwalks and associated infrastructure in provincial parks.



---

Project Category	Amount (\$)
Development and maintenance of trails, boardwalks and associated infrastructure	\$3,907.75

**Funding:** Parks Endowment Fund (General)  
**Project Cost:** \$60,000

**Location:** Duck Mountain Provincial Park

Childs Lake is located in Duck Mountain Provincial Park 85 kilometres northwest from Dauphin in western Manitoba. The campground provides campers with recreational activities including swimming, boating and fishing. In addition, there are a number of multiple use trails where hiking, cycling and all terrain vehicles are allowed.



The campground is one of Manitoba's high use areas attracting thousands of visitors per year.



The electrical upgrade project included the replacement and relocation of electrical pedestals in the campground - Bay 3.

The project falls under the category of campground enhancements in provincial parks.

---

<b>Project Category</b>	<b>Amount (\$)</b>
Campground enhancements	\$60,000

**Funding:** Hecla-Grindstone Cheryle D. Christensen Endowment Fund  
**Project Cost:** \$88,880

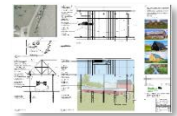
**Location:** Hecla-Grindstone Provincial Park

The Blue Streak is one of the last lake whitefish boats from Lake Winnipeg built completely of wood. The boat is displayed at Hecla Village on Lake Winnipeg.

Construction of the open-air shelter will preserve this local history ensuring an ongoing understanding of the role of the Hecla Historic Village in the growth of the province.

The Hecla Blue Streak – Open-Air Shelter project included construction of an open-air shelter over the historic Blue Streak II fishing boat displayed in Hecla Village.

The project falls under the category of historical assets and cultural sites in provincial parks.



Project Category	Amount (\$)
Historical assets and cultural sites	\$88,880

**Funding:** Parks Endowment Fund (General)  
**Project Cost:** \$23,494.25

**Location(s):** Paint Lake, Bakers Narrows and Clearwater Lake Provincial Parks

Manitoba Parks provides comfort camping by way of yurts, to visitors in several northern parks. The yurts are fully furnished and ready to enjoy. Yurts are fixed-roof facilities with large, fabric-sided walls and a dome roof including windows, skylights and lockable doors. The yurts also come equipped with electricity, heaters and lighting.



The yurt improvement project included:

- replacement of cracked domes (3) that cannot be repaired
- new yurt skins (walls/roofs) to replace existing skins – skins are worn and zippers are no longer functional to close the windows
- replace broken futon and worn futon covers (4)

The project falls under the category of infrastructure to support programming.



Project Category	Amount (\$)
Campground enhancements	\$23,494.25

**Funding:** Parks Endowment Fund (General)  
**Project Cost:** \$21,608.65

**Location:** Pisew Falls Provincial Park

Pisew Falls is located in Pisew Falls Provincial Park, 74 kilometres southwest of Thompson. The falls are located along the Grass River and jet through a gorge creating a spectacular view. An accessible walking trail leads to a viewing platform providing close access to overlook the falls.

The interpretive signage project includes sign replacement at the main entrance to the Pisew Falls area. This represents the first year of a two-year project to enhance interpretive signage in the area.

The project falls under the category of interpretive infrastructure to support programming in provincial parks.



---

<b>Project Category</b>	<b>Amount (\$)</b>
Interpretive infrastructure to support programming	\$21,608.65



**Funding:** Parks Endowment Fund (General)  
**Project Cost:** \$25,999.88

**Location:** Stephenfield Provincial Park

The campground is located near Carman in Stephenfield Provincial Park in southern Manitoba. Nestled beside the Boyne River, the park offers swimming, fishing, boating and hiking opportunities including a number of campsites for family vacations. In addition, the campground provides picnic shelters and tables.



The electrical upgrade project includes an electrical engineer assessment and scope of work for a 50 amp electrical service in Stephenfield Provincial Park.



The project falls under the category of campground enhancements in provincial parks.

---

<b>Project Category</b>	<b>Amount (\$)</b>
Campground enhancements	\$25,999.98

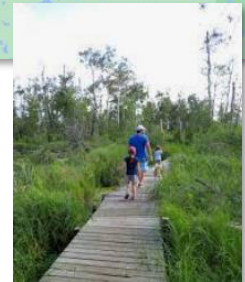
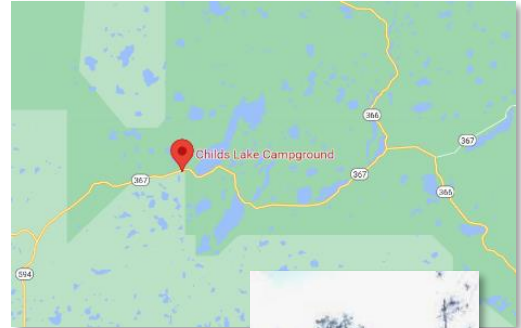
**Funding:** Parks Endowment Fund (General)  
**Project Cost:** \$42,367.29

**Location:** Turtle Mountain Provincial Park

Disappearing Lakes trail is located in Turtle Mountain Provincial Park in southwestern Manitoba. The area provides grassy pathways, snowmobiling opportunities, wildlife viewing, and other recreational activities. The interpretive trail winds through woods, meadows, bogs and marshes.

The boardwalk replacement project included the replacement of wood along the boardwalk to improve and enhance hikers experiences utilizing the trail.

The project falls under the category of development and maintenance of trails, boardwalks and associated infrastructure in provincial parks.



Project Category	Amount (\$)
Development and maintenance of trails, boardwalks and associated infrastructure	\$42,367.29

**Funding:** Parks Endowment Fund (General)  
**Project Cost:** \$5,009.94

**Location(s):** Turtle Mountain Provincial Park

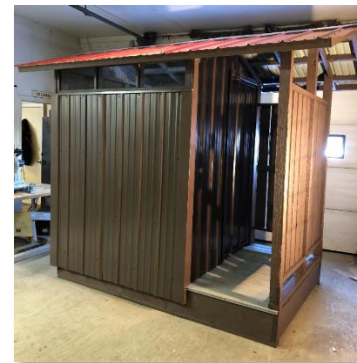
Disappearing Lakes trail is located in Turtle Mountain Provincial Park in southwestern Manitoba. The area provides grassy pathways, snowmobiling opportunities, wildlife viewing, and other recreational activities. Manitoba provides washroom facilities in the area such as pit privies to accommodate the needs of visitors to the park.



The pit privy project at Disappearing Lakes is fixing two facilities with various components including, but not restricted to:

- replacing roof with metal,
- replacing siding with tin,
- improved lighting with clear ridge cap and doors
- hardware, hand sanitizer station, and toilet paper dispenser
- replacing old pine plank flooring with treated plywood

The project falls under the category of infrastructure to support programming in provincial parks.




---

Project Category	Amount (\$)
Infrastructure to support programming	\$5,009.94

**Funding:** Parks Endowment Fund (General)  
**Project Cost:** \$40,837.52

**Location:** Whiteshell Provincial Park

Caribou Lake is located in Whiteshell Provincial Park in eastern Manitoba. The lake is accessed via the Mantario trail and hikers are led through forests and the Canadian Shield on their journey.



Caribou Lake provides camping facilities on a small peninsula jutting into the lake with amazing views for hardy backcountry hikers.



The Caribou Lake furniture project included the purchase of three sets of new furniture to be distributed to the most heavily used locations in the area.

The project falls under the category of campground enhancement to support programming in provincial parks.

---

<b>Project Category</b>	<b>Amount (\$)</b>
Campground enhancements	\$40,837.52

**Funding:** Parks Endowment Fund (General)  
**Project Cost:** \$73,265.94

**Location:** Whiteshell Provincial Park

The Bear Lake hiking trail is a 5.8 kilometre stretch located near McDougalls Landing off Hwy #44 in Whiteshell Provincial Park. The trail is located in the Canadian Shield and features a panoramic view of Bear Lake at the end of the trail that offers picnic facilities. The trail offers a number of activity options and is best used from May until September.



The Bear Lake trail improvement project included the replacement of the boardwalk and modifications to the trailhead and installation of ropes to address steep inclines.



The project falls under the category of development and maintenance of trails, boardwalks and associated infrastructure in provincial parks.

---

<b>Project Category</b>	<b>Amount (\$)</b>
Development and maintenance of trails, boardwalks and associated infrastructure	\$73,265.94

**Funding:** Parks Endowment Fund (General)  
**Project Cost:** \$46,995

**Location:** Winnipeg Beach Provincial Park

Winnipeg Beach is located on the southern shore of Lake Winnipeg and is a resort town that attracts 1,000's of visitors to the area. The park provides camping and hiking opportunities, swimming, boating and other recreational activities for visitors.

The boat ramp is a high use facility used by boaters accessing Lake Winnipeg. This project replaces an old ramp and extends it further into the marina to ensure a large variety of large and small boats can launch.

The project falls under the category of public-use facilities like; amphitheatres, shelters, day use sites, playgrounds, docks & launches in provincial parks.



Project Category	Amount (\$)
Public-use facilities like; Amphitheatres, Shelters, Day use sites, Playgrounds, Docks & Launches	\$46,995

