

**DATA SOURCE:**  
Manitoba Hydro; Government of Manitoba; Government of Canada;  
NTS 50K Contours

**CREATED BY:**  
Manitoba Hydro - Hydro Power Planning - GIS & Special Studies

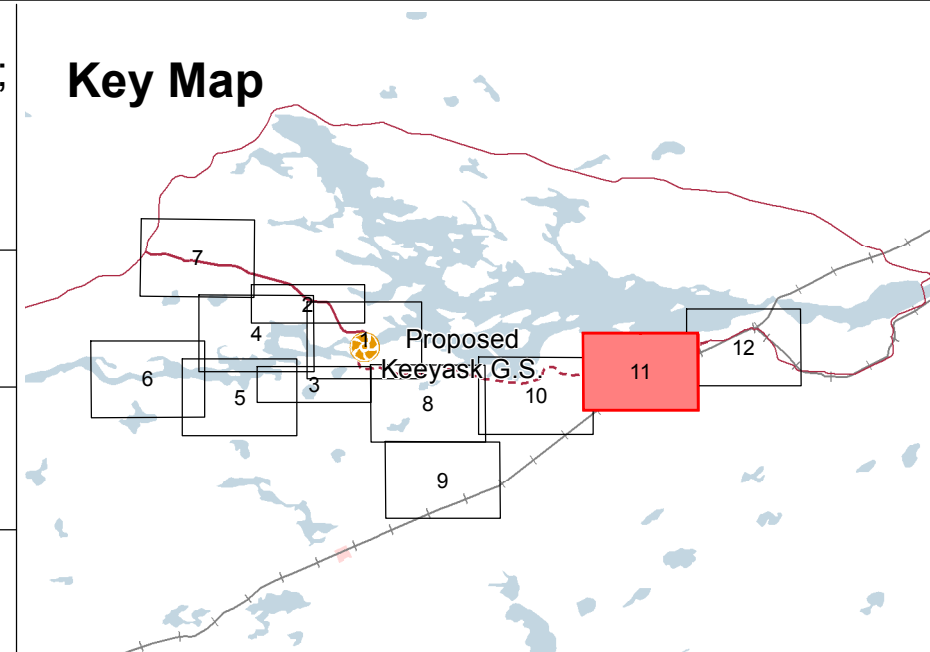
**COORDINATE SYSTEM:**  
UTM NAD 1983 Z15N

**DATE CREATED:**  
01-JUN-13

**REVISION DATE:**  
04-FEB-14

**VERSION NO.:**  
1.0

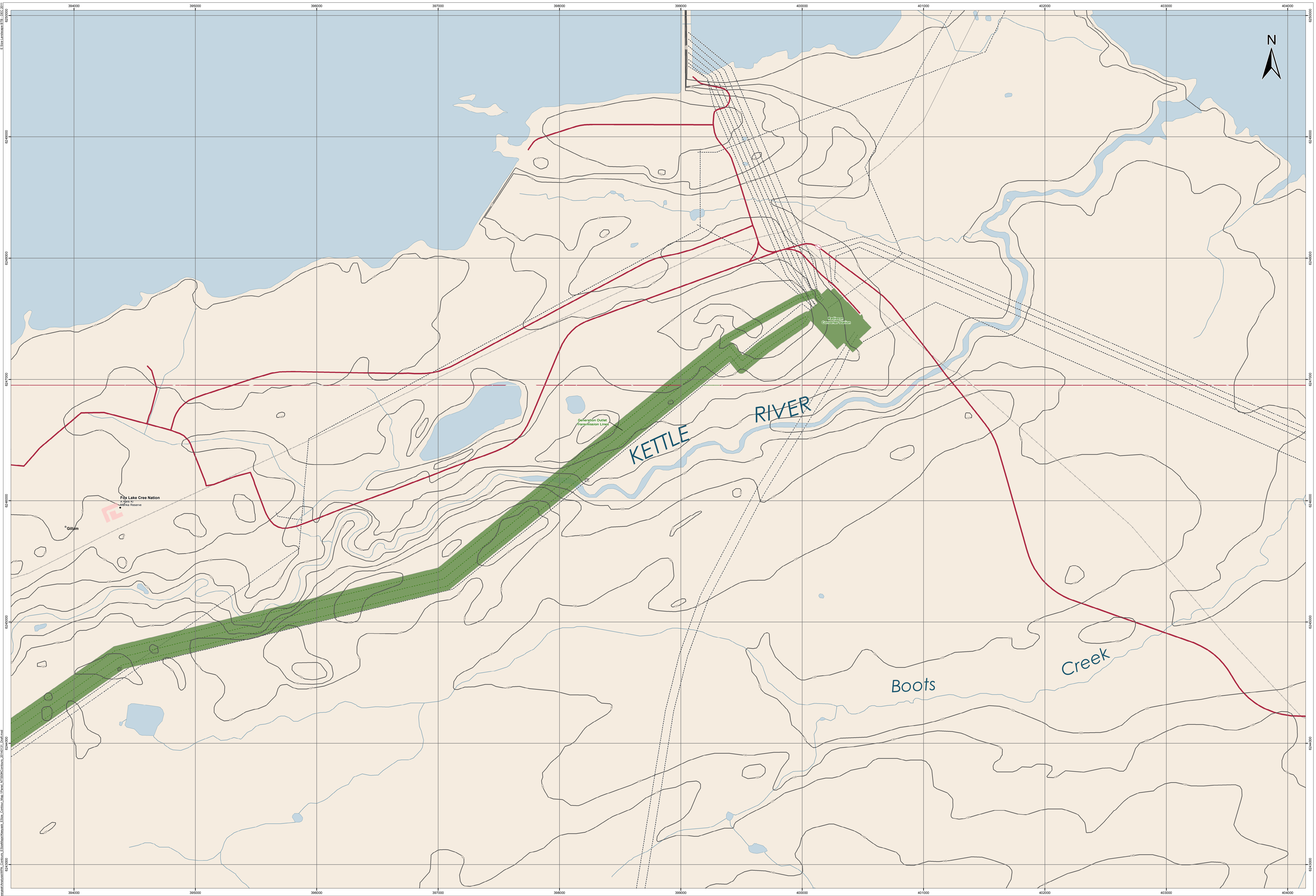
**QA/QC:**



**Legend**

Contour Elevation 3 metre	Approach and Discharge Channels	Access Road	Boat Launch
Principal Structures	Proposed Access Road	Proposed Transmission Line	Boat Launch Access Trail
Supporting Infrastructure	Rail	Existing Transmission Line	Portage Route
Transmission Project Components	Proposed Transmission Line	Existing Water Area	Dewatered Area (Potential)
Borrow Area	Existing Transmission Line	Initial Flooded Area (159 m) - 95th Percentile Flow	
Excavated Material Placement Area (EMPA)	Environmental Mitigation Area		

# Keeyask Project Elevation Contours



**DATA SOURCE:**  
Manitoba Hydro; Government of Manitoba; Government of Canada;  
NTS 50K Contours

**CREATED BY:**  
Manitoba Hydro - Hydro Power Planning - GIS & Special Studies

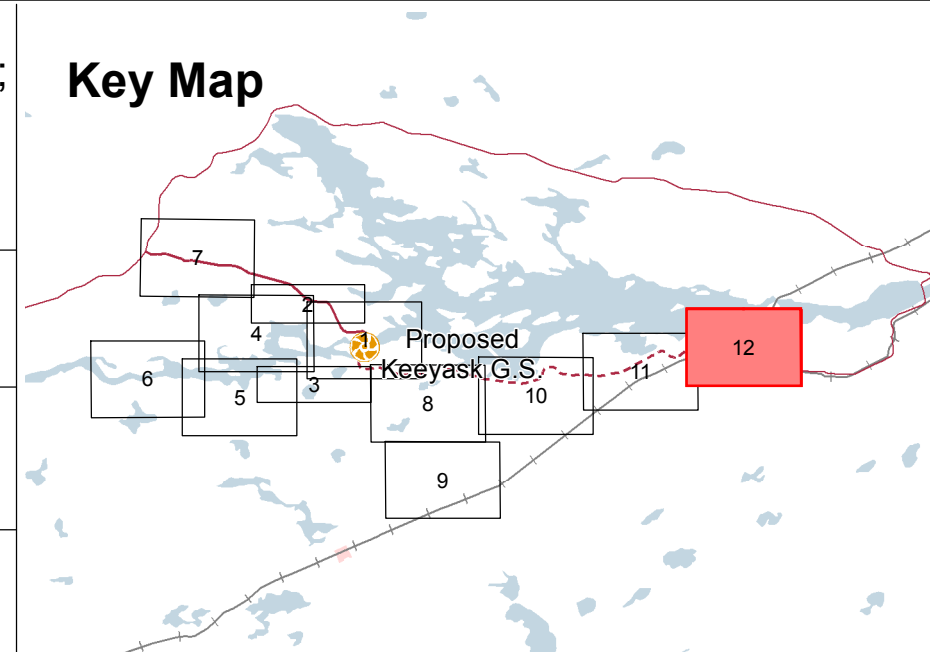
**COORDINATE SYSTEM:**  
UTM NAD 1983 Z15N

**DATE CREATED:**  
01-JUN-13

**REVISION DATE:**  
04-FEB-14

**VERSION NO.:**  
1.0

**QA/QC:**



Legend		
Contour Elevation	Approach and Discharge Channels	Access Road
3 metre	Principal Structures	Proposed Access Road
Supporting Infrastructure	Transmission Project Components	Rail
Borrow Area	Excavated Material Placement Area (EMPA)	Proposed Transmission Line
Environmental Mitigation Area	Existing Water Area	Existing Transmission Line
	Dewatered Area (Potential)	Boat Launch
	Initial Flooded Area (159 m) - 95th Percentile Flow	Boat Launch Access Trail
		Portage Route

## Keeyask Project Elevation Contours